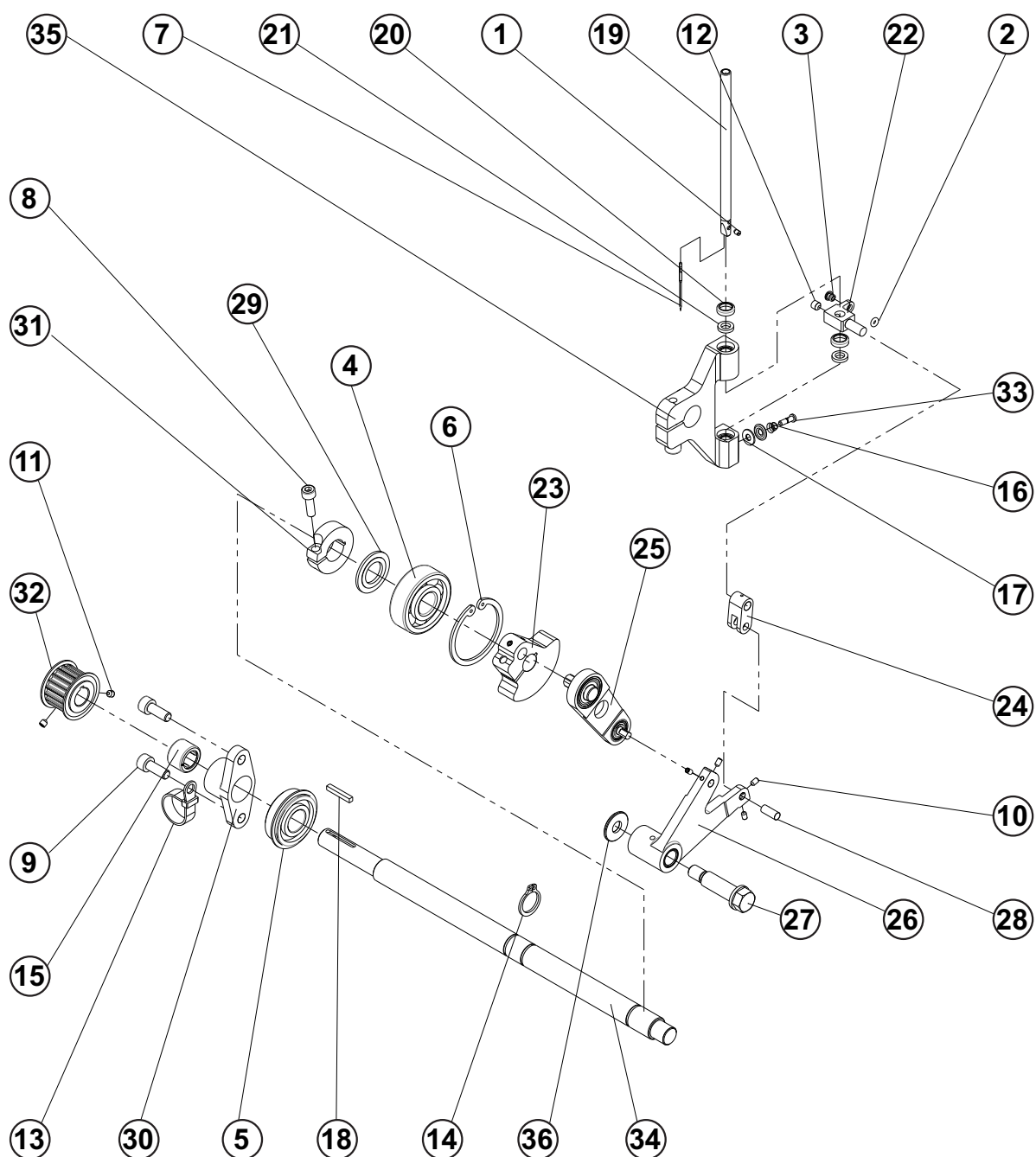


## TABLE OF CONTENTS

---

NEEDLE BAR .....	3-2
CLAMPING .....	3-4
THREAD TRIMMER .....	3-6
FEED MECHANISM .....	3-8
LOOPER MECHANISM .....	3-10
BITE MECHANISM .....	3-12
BASE .....	3-14
BEDPLATE TOP .....	3-16
BEDPLATE BOTTOM .....	3-18
THREAD DRAW-OFF .....	3-20
HEAD .....	3-22
COVERS .....	3-24
LUBRICATION .....	3-26
INDEXER CLAMPING BRACKET .....	3-28
INDEXER CLAMPING 30° .....	3-30
Y - AXIS INDEXER .....	3-32
INDEXER COVER .....	3-34
THREAD PICK-UP .....	3-36
ELECTRICAL .....	3-38
PANEL KIT .....	3-40
TABLE .....	3-42
FILTER REGULATOR .....	3-44
VALVE BLOCK .....	3-46

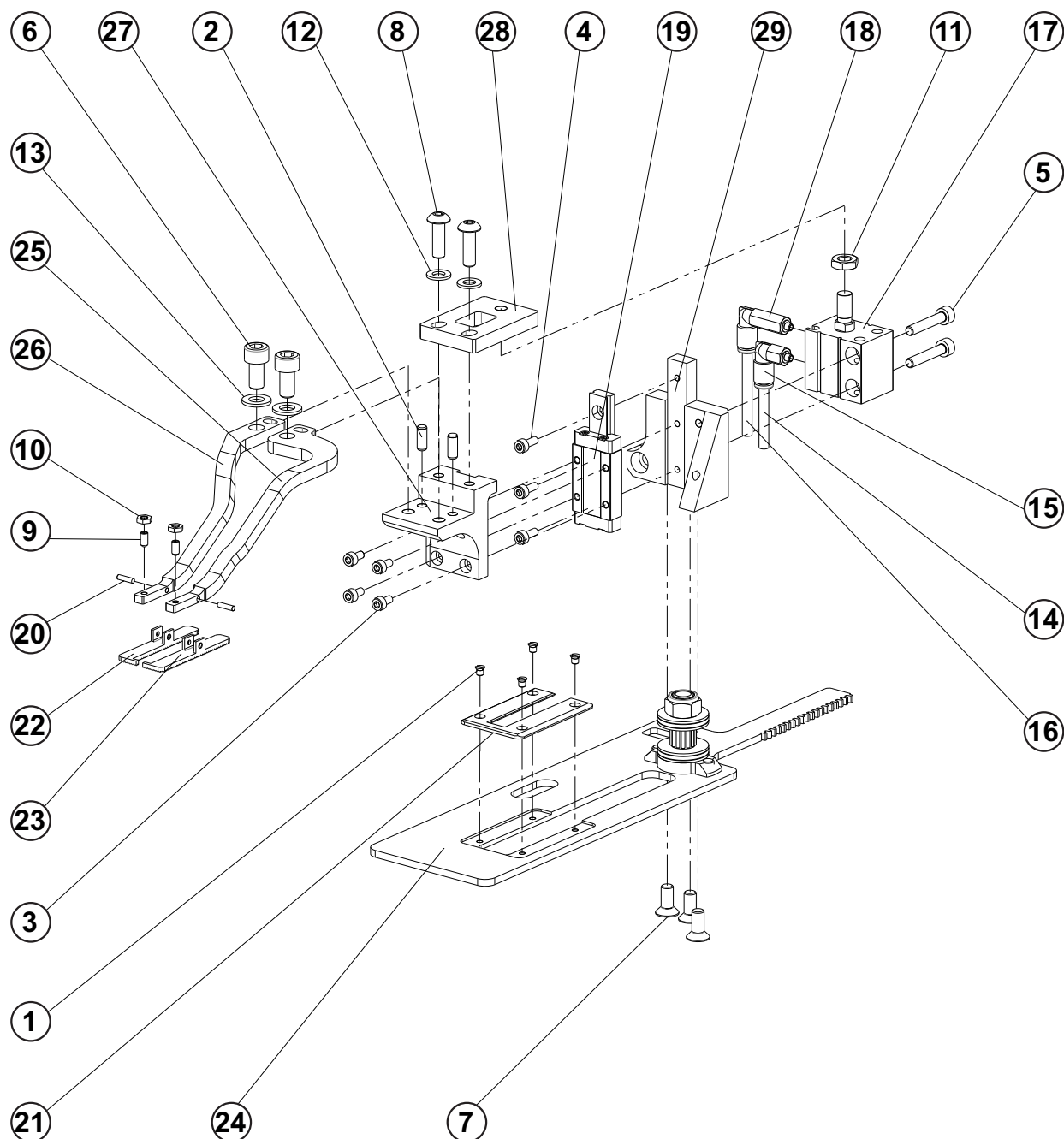
## NEEDLE BAR



## NEEDLE BAR

DET	PART NUMBER	DESCRIPTION	QTY.
01	01.2193.0.000	SCREW-SET	1
02	01.6551.0.000	O-RING	1
03	01.7447.1.000	GUIDE	1
04	01.7804.0.000	BEARING	1
05	01.7805.0.000	BEARING	1
06	01.7809.0.000	RETAINING RING	1
07	02.0750.2.110	NEEDLE	1
08	08.6000.5.016	SCREW M5-16	1
09	08.6000.6.016	SCREW M6-16	2
10	08.6400.3.005	SCREW M3-5	4
11	08.6400.4.004	SCREW M4-4	2
12	08.6400.5.005	SCREW M5-5	1
13	12.0010.4.013	CABEL BINDER	1
14	12.1045.2.001	RETAINING RING 15	1
15	12.2050.0.003	BEARING	1
16	17.0026.2.077	SPRING	1
17	17.0082.8.017	TENSION DISC	2
18	22.0175.0.000	KEY	1
19	22.0195.0.000	NEEDLE BAR	1
20	22.0230.0.000	RING	2
21	22.0239.0.000	FELT	2
22	22.0520.0.000	CLAMP, NEEDLE BAR	1
23	22.0525.0.050	CRANK ASSY.	1
24	22.0530.0.000	CONNECT. LINK, NEEDLE BAR	1
25	22.0535.0.100	NEEDLE BAR CRANK LINK ASSY.	1
26	22.0540.0.000	N.B. CONNECTION LINK PIN	1
27	22.0541.0.000	N.B.SHOULDER SCREW	1
28	22.0542.0.000	N.B. CONNECTINK LINK PIN	1
29	22.0545.0.000	WASHER	1
30	24.0001.0.000	BEARING CARRIER UPPER SHAFT	1
31	24.0002.0.000	CLAMP COLLAR	1
32	24.0048.0.000	NEEDLE BAR PULLEY	1
33	24.0100.0.000	SCREW M3.5X0.35-11	1
34	24.0500.0.000	NEEDLE BAR DRIVE SHAFT	1
35	24.0510.0.000	NEEDLE BAR HOLDER	1
36	24.0546.0.000	WASHER	1

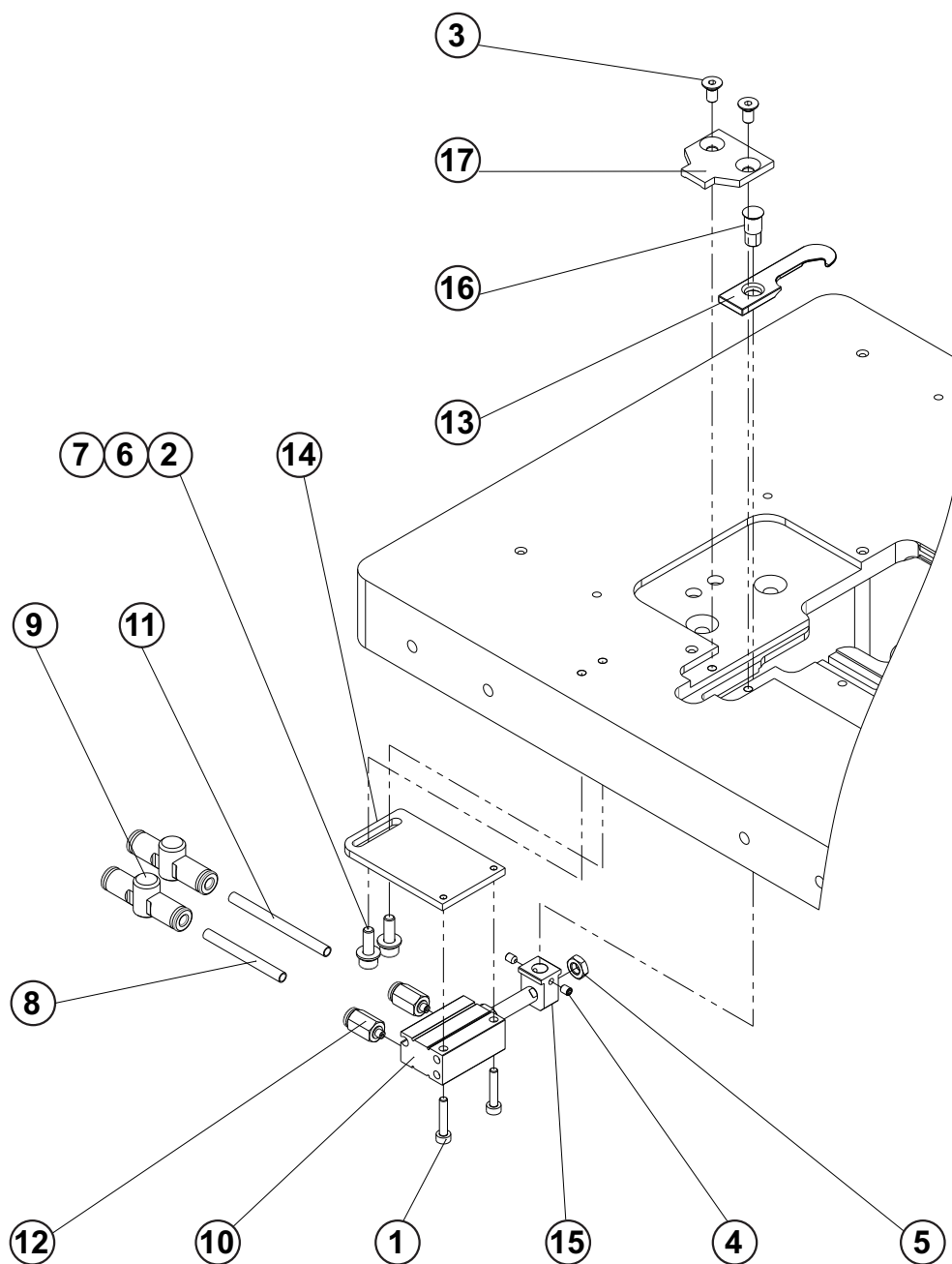
## CLAMPING



## CLAMPING

DET	PART NUMBER	DESCRIPTION	QTY.
1	01.2376.0.000	SCREW-FLAT HEAD	4
2	07.6045.0.046	PIN 4-10	2
3	08.6002.3.006	SCREW M3-6	4
4	08.6002.3.008	SCREW M3-8	3
5	08.6002.4.022	SCREW M4-22	2
6	08.6002.6.012	SCREW M6-12	2
7	08.6100.5.012	SCREW M5-12	3
8	08.6202.5.016	SCREW M5-16	2
9	08.6402.3.006	SCREW M3-6	2
10	08.6712.3.000	NUT M3	2
11	08.6712.6.000	NUT M6	1
12	08.6852.5.000	WASHER 5,3	2
13	08.6852.6.000	WASHER 6,4	2
14	12.0008.3.416	AIR TUBE- J2B	—
15	12.0010.3.036	CONNECTOR	1
16	12.0010.3.080	AIR TUBE- J2A	—
17	12.0010.3.194	CYLINDER	1
18	12.0010.3.195	CONNECTOR	1
19	12.2070.1.019	LINEAR GUIDE	1
20	17.0031.0.460	PIN 2x8	2
21	22.0164.0.000	CLAMPING MAT	1
22	22.0223.0.000	LEFT FOOT	1
23	22.0224.0.000	RIGHT FOOT	1
24	24.3028.2.000	CLAMPING PLATE	1
25	24.3094.0.000	CLAMP ARM RIGHT	1
26	24.3095.0.000	CLAMP ARM LEFT	1
27	24.3096.0.000	CLAMP ARM BRACKET	1
28	24.3097.0.000	HOLDER	1
29	24.3098.0.000	BRACKET	1

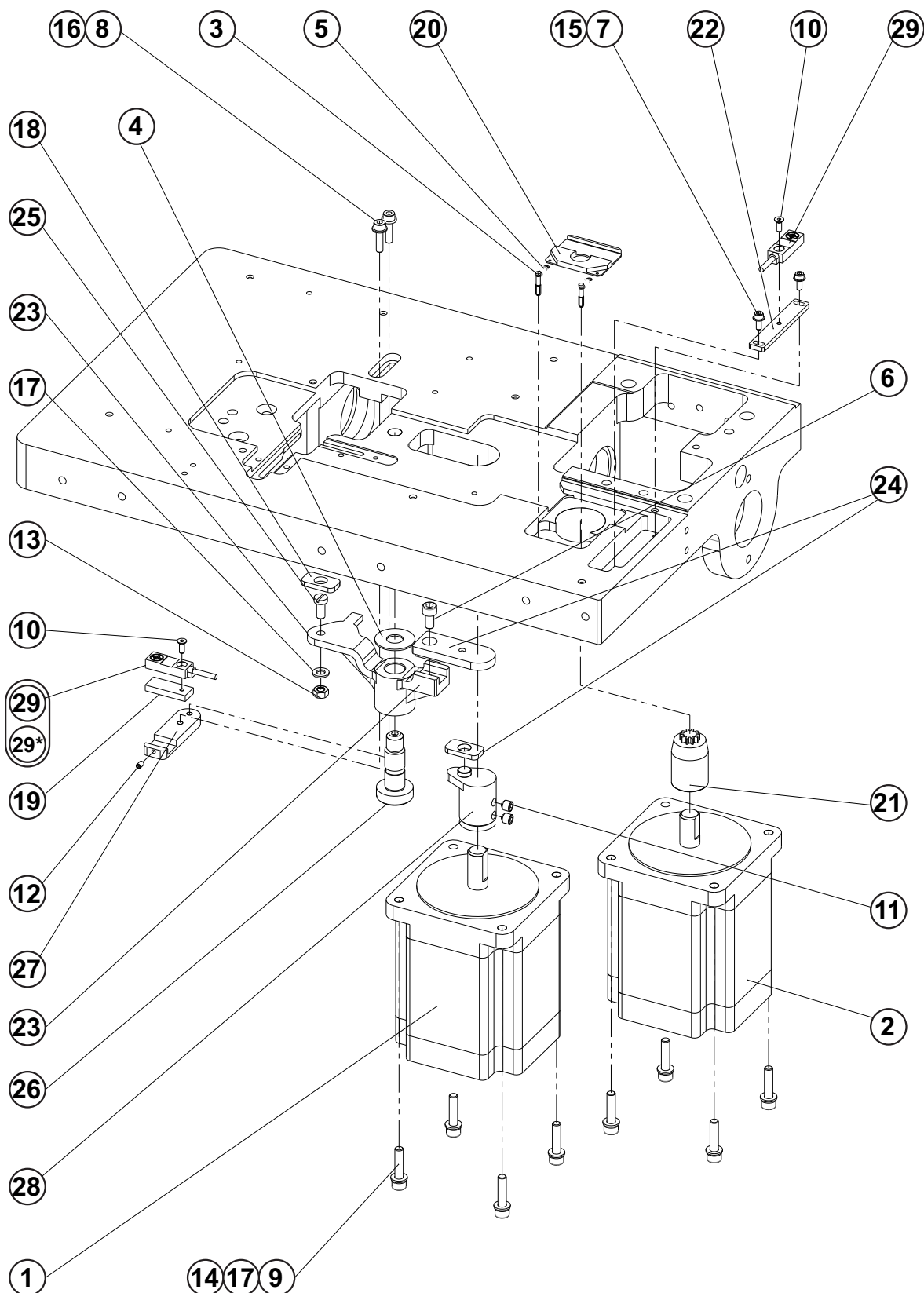
## THREAD TRIMMER



## THREAD TRIMMER

DET	PART NUMBER	DESCRIPTION	QTY.
01	08.6002.3.016	SCREW M3-16	2
02	08.6002.4.012	SCREW M4-12	2
03	08.6102.4.008	SCREW M4-8	2
04	08.6402.3.004	SCREW M3-4	2
05	08.6712.5.000	NUT M5	1
06	08.6802.4.000	SPRING WASHER M4	2
07	08.6852.4.000	WASHER M4	2
08	12.0008.3.416	AIR TUBE- J3B	—
09	12.0008.3.804	QUICK EXHAUST VALVE	2
10	12.0010.3.034	CYLINDER	1
11	12.0010.3.080	AIR TUBE- J3A	—
12	12.0010.3.119	CONNECTOR	2
13	24.0093.3.004	HOOK, TRIMMER	1
14	24.0175.0.000	TRIMMER CYLINDER HOLDER	1
15	24.0176.0.000	CONNECTING LINK PIN	1
16	24.0177.0.000	TRIMMER HOOK, PIN	1
17	24.0408.0.000	HOOK COVER	1

## FEED MECHANISM

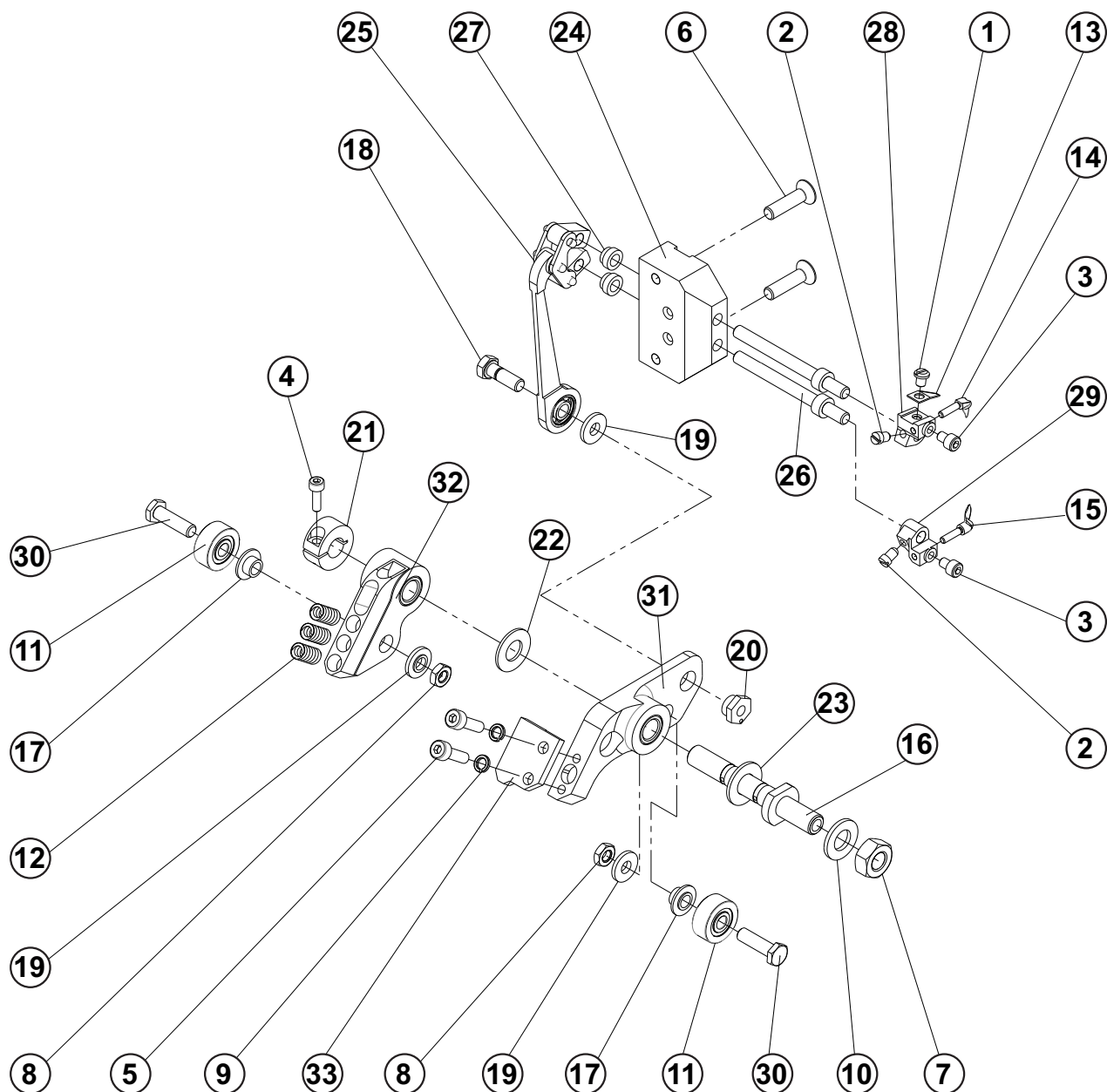




## FEED MECHANISM

DET	PART NUMBER	DESCRIPTION	QTY.
01	06.2400.0.651	STEPPER MOTROR SM1/ X ASSY.	1
02	06.2400.0.652	STEPPER MOTOR SM2/ Y ASSY.	1
03	07.6045.0.037	PIN 3-16	2
04	07.6321.0.001	BEARING PLATE	1
05	07.6440.0.033	SPRING	2
06	08.6000.5.010	SCREW M5-10	1
07	08.6002.3.008	SCREW M3-8	2
08	08.6002.4.016	SCREW M4-16	2
09	08.6002.5.022	SCREW M5-22	8
10	08.6102.3.008	SCREW M3-8	2
11	08.6400.6.006	SCREW M6-6	2
12	08.6402.3.005	SCREW M3-5	1
13	08.6702.5.000	NUT M5	1
14	08.6802.5.000	SPRING WASHER M5	8
15	08.6852.3.000	WASHER M3	2
16	08.6852.4.000	WASHER M4	2
17	08.6852.5.000	WASHER 5,3	9
18	22.2631.0.000	CLAMP PLATE SLIDESTONE	1
19	24.0027.0.000	SENSOR MOUNTING PLATE	1
20	24.0061.2.000	M*RETAINER, CLAMP PLATE	1
21	24.0178.0.000	GEAR	1
22	24.0181.0.000	HOME SENSOR BRACKET	1
23	24.0182.0.000	BARRING LEVER	1
24	24.0183.0.000	GUIDE BRACKET-"X" AXIS	1
25	24.0184.0.000	SLIDESTONE RETAINING SCREW	1
26	24.0185.0.000	STUD	1
27	24.0186.0.000	SENZOR BRACKET-X AXIS	1
28	24.0187.0.000	ECCENTRIC LEVER-X AXIS 9mm	1
29	06.2400.0.657	SENSOR ASSEMBLY	1

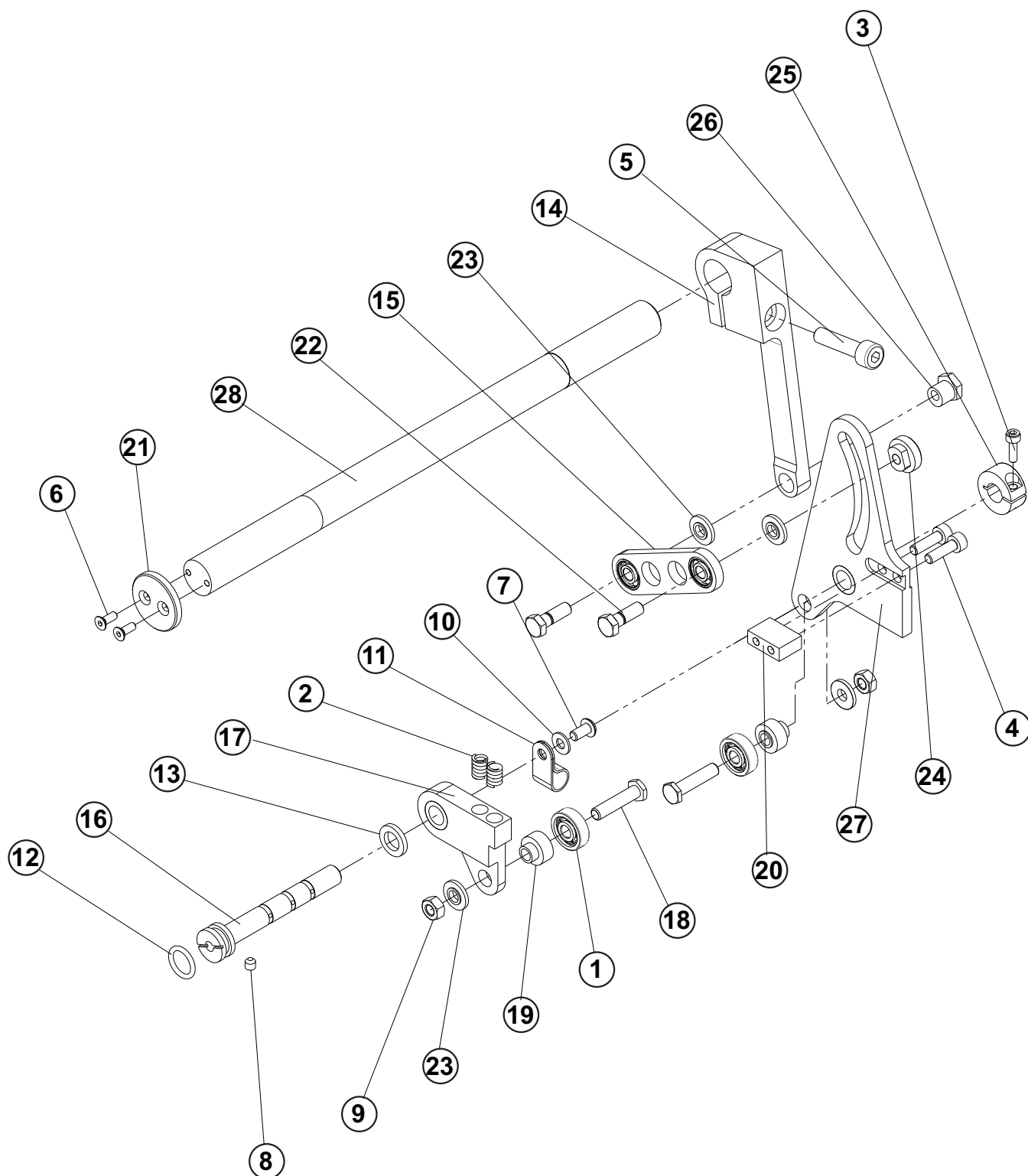
# LOOPER MECHANISM



## LOOPER MECHANISM

DET	PART NUMBER	DESCRIPTION	QTY.
01	01.1382.0.000	SCREW 6-40x4	1
02	01.1397.0.000	SCREW 6-40x4,8	2
03	08.3000.6.005	SCREW 6-40x3/16	2
04	08.6000.3.010	SCREW M3-10	1
05	08.6000.4.014	SCREW M4-14	2
06	08.6100.5.020	SCREW M5-20	2
07	08.6700.8.000	NUT M8	1
08	08.6710.5.000	NUT M5	2
09	08.6800.4.000	WASHER 4	2
10	08.6850.8.000	WASHER 8	1
11	12.2010.1.002	BEARING LR	2
12	12.3010.0.037	SPRING	3
13	20.0094.0.000	KNIFE - TRIMMER	1
14	20.0111.0.000	FIRST LOOPER	1
15	20.0112.0.000	SECOND LOOPER	1
16	22.0022.0.000	PIVOT SHAFT	1
17	22.0031.0.000	BEARING SPACER	2
18	22.0064.0.000	BITE SHOULDER SCREW	1
19	22.0100.0.000	SHOULDER WASHER	3
20	22.0105.0.000	LOOPER ECCENTRIC NUT	1
21	22.0183.0.000	RING	1
22	22.0232.0.000	WASHER	1
23	22.0233.0.000	WASHER	1
24	22.2410.0.000	SPREADER	1
25	22.2425.0.050	LOOPER LINK ASSY.	1
26	22.2440.0.000	LOOPER SHAFT	2
27	22.2442.0.000	LOOPER SPACER	2
28	23.2106.0.000	FIRST LOOPER HOLDER	1
29	23.2107.0.000	SECOND LOOPER HOLDER	1
30	24.0066.0.000	SCREW	2
31	24.0188.0.000	R.H.LOOPER CAM FOLLOWER PLAT	1
32	24.0189.0.000	LOOPER CAM FOLLOWER PLATE	1
33	24.0190.0.000	SPRING RETAINER BLOCK	1

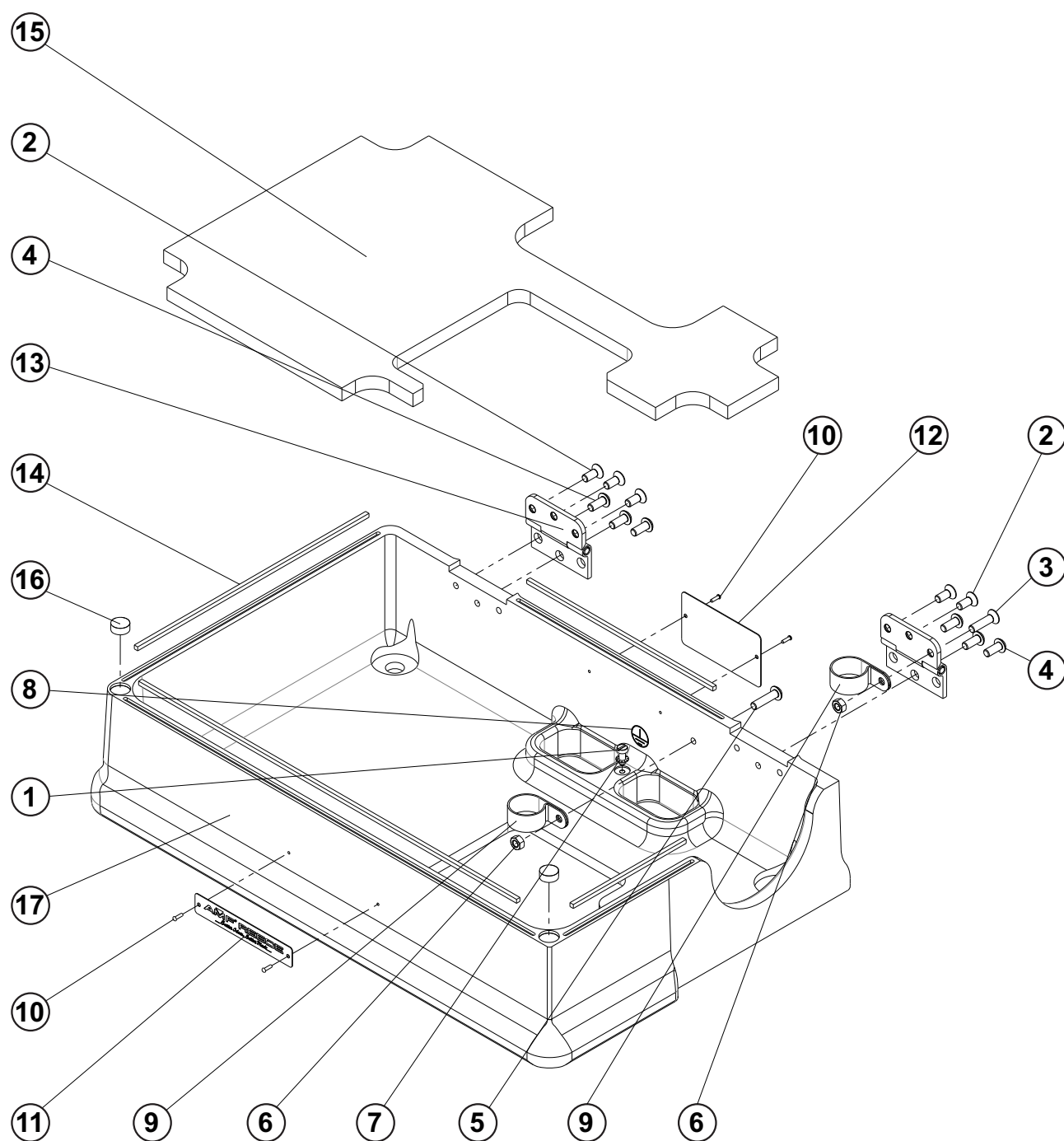
## BITE MECHANISM



## BITE MECHANISM

DET	PART NUMBER	DESCRIPTION	QTY.
01	07.6321.0.025	BEARING	2
02	07.6440.0.028	SPRING	2
03	08.6000.3.010	SCREW M3-10	1
04	08.6000.4.014	SCREW M4-14	2
05	08.6000.6.025	SCREW M6-25	1
06	08.6100.3.008	SCREW M3-8	2
07	08.6200.4.008	SCREW M4-8	1
08	08.6400.4.004	SCREW M4-4	1
09	08.6700.5.000	NUT M5	2
10	08.6850.4.000	WASHER M4	1
11	12.0008.4.280	CLAMP CABLE	1
12	12.0008.6.800	O-RING 10x2	1
13	17.0019.1.062	WASHER	1
14	22.0008.0.000	BITE LEVER	1
15	22.0009.0.050	BITE ADJUSTING LINK ASSY.	1
16	22.0020.0.000	BITE PIVOT SHAFT	1
17	22.0027.0.000	RIGHT CAM FOLLOWER	1
18	22.0028.0.000	SCREW, BITE FOLLOWER	2
19	22.0029.0.000	BITE FOLLOWER BEARING SPACER	2
20	22.0030.0.000	BITE FOLLOWER SPRING RETAINER	1
21	22.0063.0.000	BITE SHAFT RETAINER	1
22	22.0064.0.000	BITE SHOULDER SCREW	2
23	22.0100.0.000	SHOULDER WASHER	4
24	22.0110.0.000	SHOULDER NUT M5	1
25	22.0183.0.000	RING	1
26	22.0214.0.000	ECENTRIC NUT M5	1
27	24.0033.0.000	LEFT CAM FOLLOWER	1
28	24.0055.0.000	BITE SHAFT	1

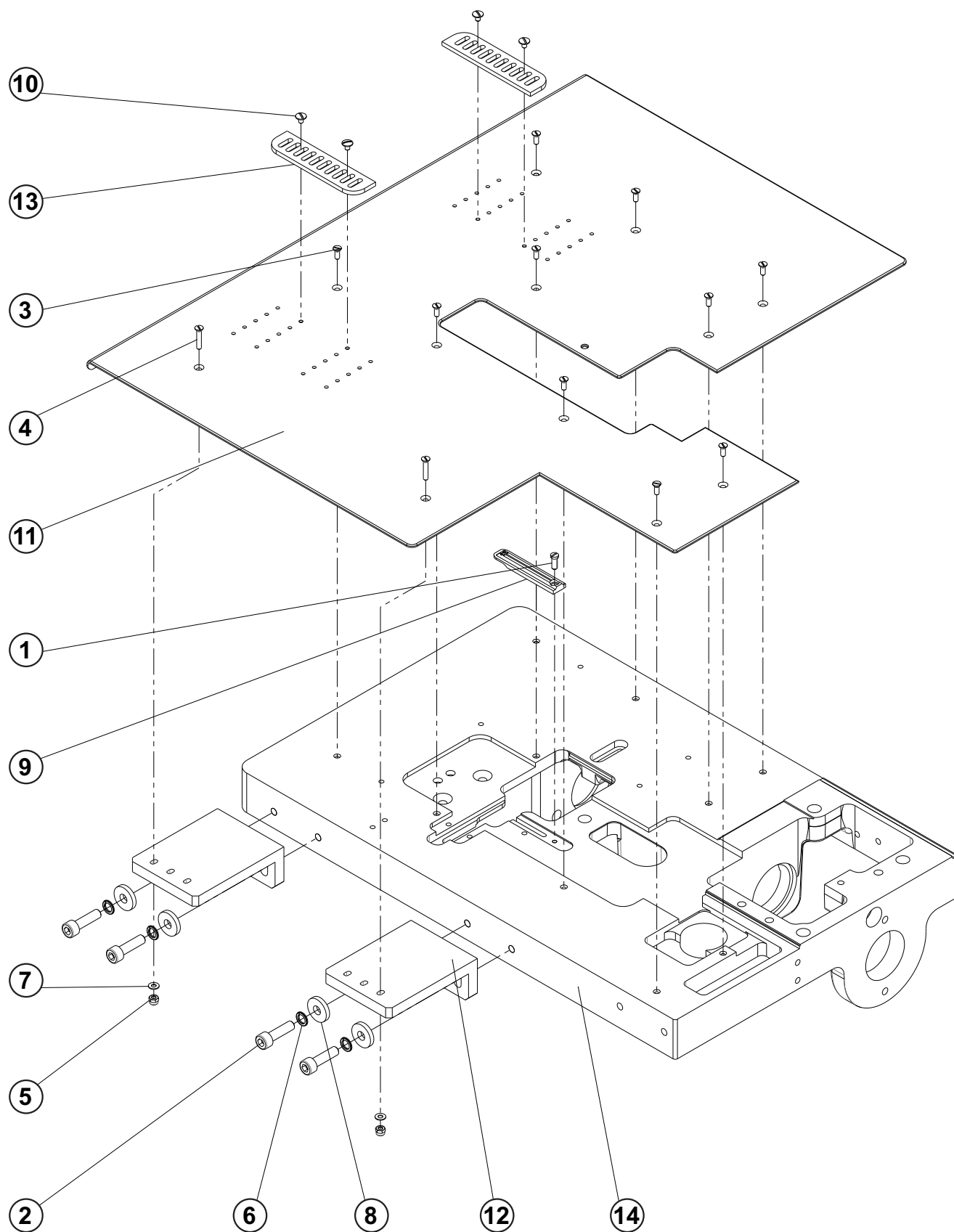
## BASE



# BASE

DET	PART NUMBER	DESCRIPTION	QTY.
01	08.6012.4.010	SCREW M4-10	1
02	08.6100.5.012	SCREW M5-12	5
03	08.6100.5.020	SCREW M5-20	1
04	08.6200.5.012	SCREW M5-12	6
05	08.6200.5.020	SCREW M5-20	1
06	08.6700.5.000	NUT M5	2
07	08.6832.4.000	WASHER M4	1
08	12.0008.4.052	LABEL GROUND	1
09	12.0008.4.197	CLAMP	2
10	12.1016.0.002	NAIL 1.86x6.35	4
11	12.8000.1.047	LABEL - AMF REECE	1
12	12.8000.1.062	LABEL CE	1
13	22.1010.0.000	HINGE	2
14	24.0038.1.000	BASE GASKET	1
15	24.0111.1.000	BASE SOUND DEADENER	1
16	24.0191.0.000	FELT	2
17	24.6005.2.000	BASE S-4002	1

# BEDPLATE TOP

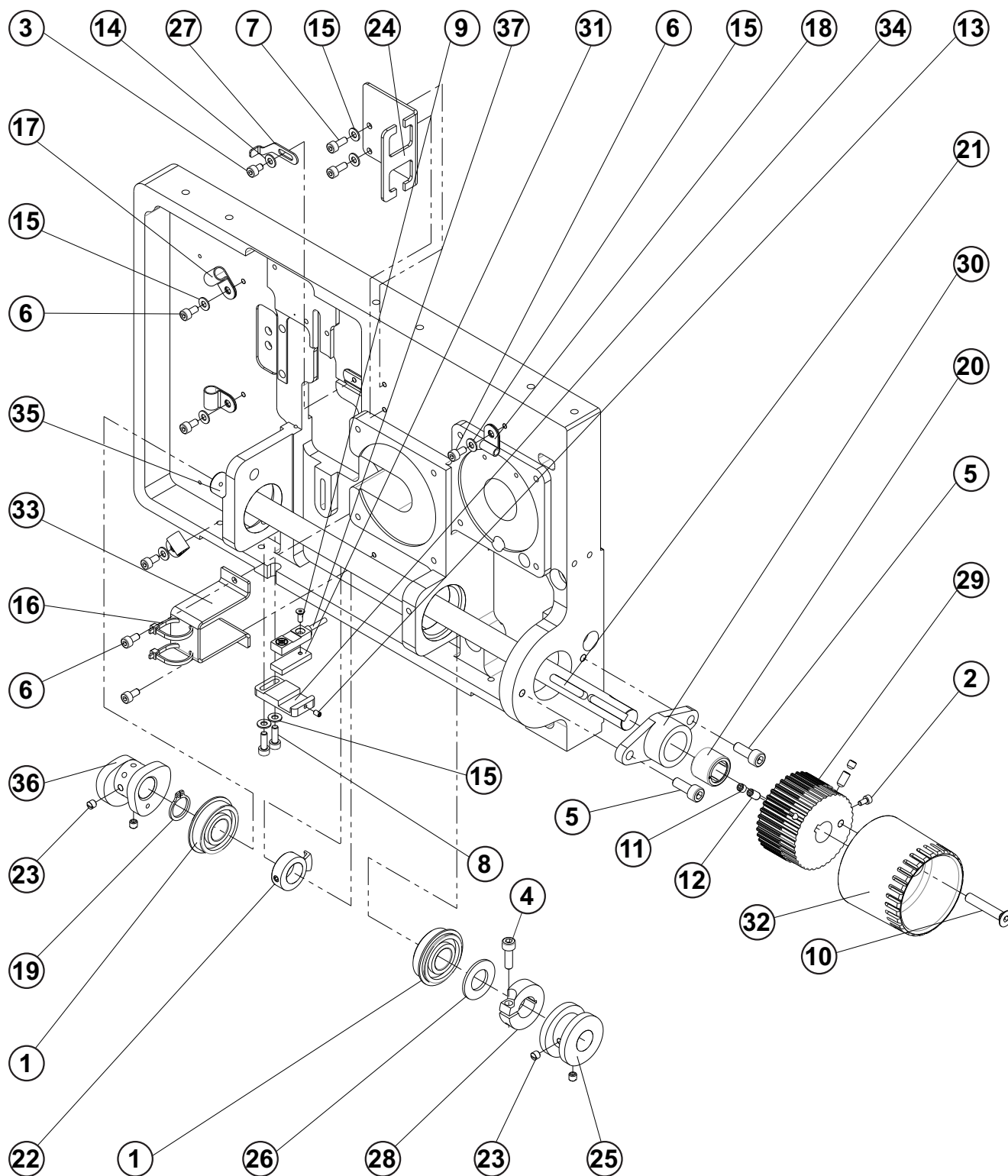




## BEDPLATE TOP

DET	PART NUMBER	DESCRIPTION	QTY.
01	01.2084.0.000	SCREW	1
02	08.6002.6.022	SCREW M6-20	4
03	08.6112.3.008	SCREW M3-8	10
04	08.6112.3.016	SCREW M3-16	2
05	08.6733.3.000	NUT M3	2
06	08.6802.6.000	SPRING WASHER M6	4
07	08.6852.3.000	WASHER M3	2
08	08.6892.6.000	WASHER M6	4
09	22.3034.0.000	THROAT PLATE	1
10	22.3068.0.000	SCREW	4
11	24.3055.6.000	COVER PLATE	1
12	24.3099.0.000	COVER PLATE BRACKET	2
13	24.3100.0.000	MATERIAL GUIDE	2
14	24.6100.5.000	BEDPLATE	1

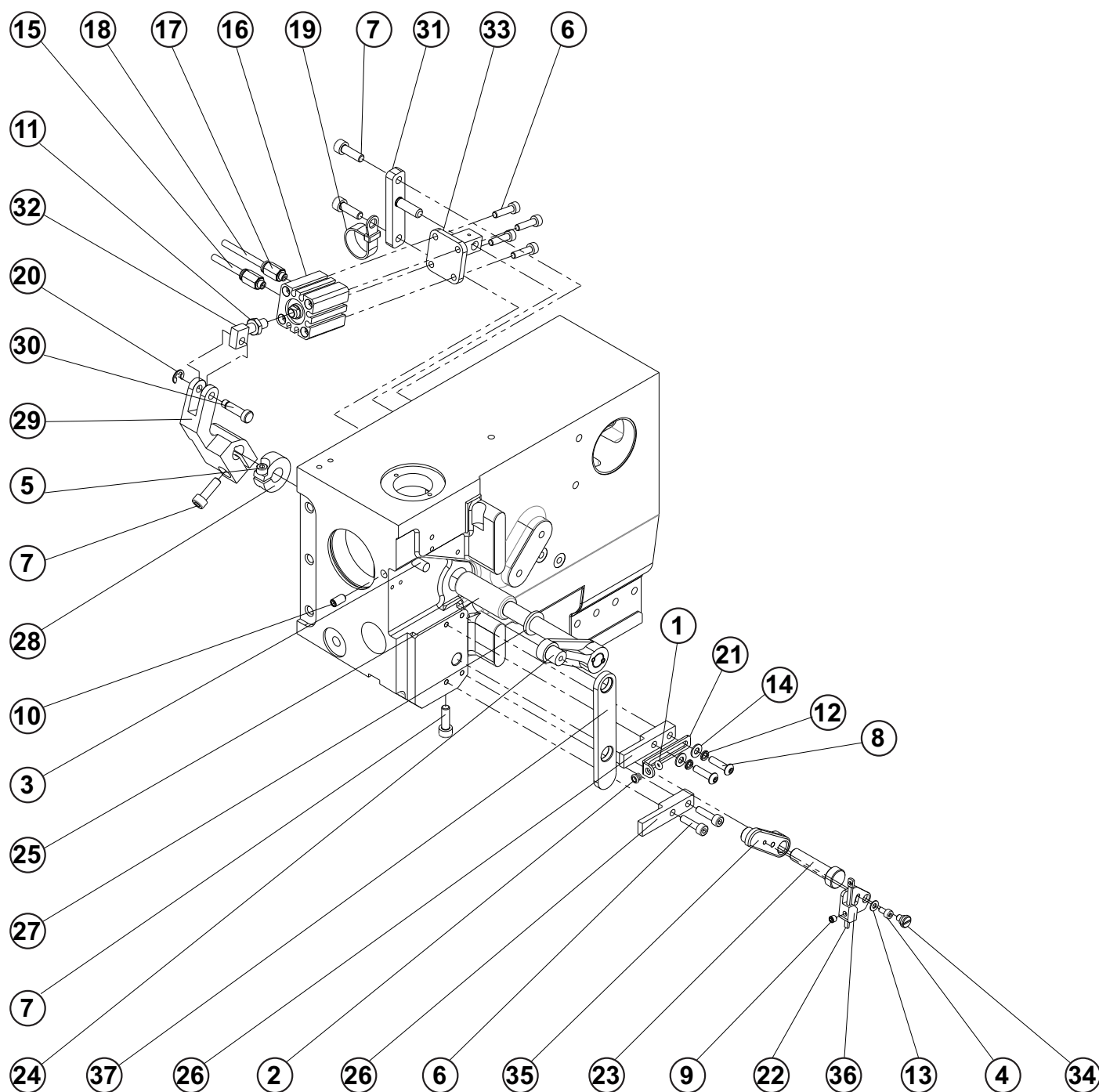
## BEDPLATE BOTTOM



## BEDPLATE BOTTOM

DET	PART NUMBER	DESCRIPTION	QTY.
01	01.7805.0.000	BEARING	2
02	08.6000.3.006	SCREW M3-6	1
03	08.6000.4.006	SCREW M4-6	1
04	08.6000.5.016	SCREW M5-16	1
05	08.6000.6.016	SCREW M6-16	2
06	08.6002.4.008	SCREW M4-8	6
07	08.6002.4.010	SCREW M4-10	2
08	08.6002.4.012	SCREW M4-12	2
09	08.6100.3.008	SCREW M3-8	1
10	08.6100.6.035	SCREW M6-35	1
11	08.6400.5.005	SCREW M5-5	2
12	08.6400.5.010	SCREW M5-10	2
13	08.6402.3.005	SCREW M3-5	1
14	08.6850.4.000	WASHER M4	1
15	08.6852.4.000	WASHER M4	8
16	12.0008.3.023	TY-WRAP	2
17	12.0008.4.225	CLAMP	3
18	12.0008.4.277	CLAMP	1
19	12.1045.2.001	RETAINING RING 15	1
20	12.2050.0.005	BEARING	1
21	12.4030.0.002	KEY 5h9x5x30	1
22	15.4410.0.400	SENSOR RING	1
23	17.0011.1.149	SCREW M5x0,5-5	4
24	19.0082.3.464	HOLDER	1
25	22.0006.0.000	BITE CAM	1
26	22.0545.0.000	WASHER	1
27	22.3219.0.000	NEEDLE GUARD	1
28	24.0002.0.000	CLAMP COLLAR	1
29	24.0018.0.000	MAIN SHAFT DRIVE PULLEY	1
30	24.0019.0.000	BEARING CARRIER LOWER SHAFT	1
31	24.0027.0.000	SENSOR MOUNTING PLATE	1
32	24.0051.0.066	HAND WHEEL	1
33	24.0192.0.000	CABLE HOLDER	1
34	24.0193.0.000	SENZOR BRACKET-N.B.POS.	1
35	24.1000.0.000	MAIN SHAFT	1
36	24.2400.0.000	LOOPER CAM	1
37	06.2400.0.657	SENSOR ASSEMBLY	1

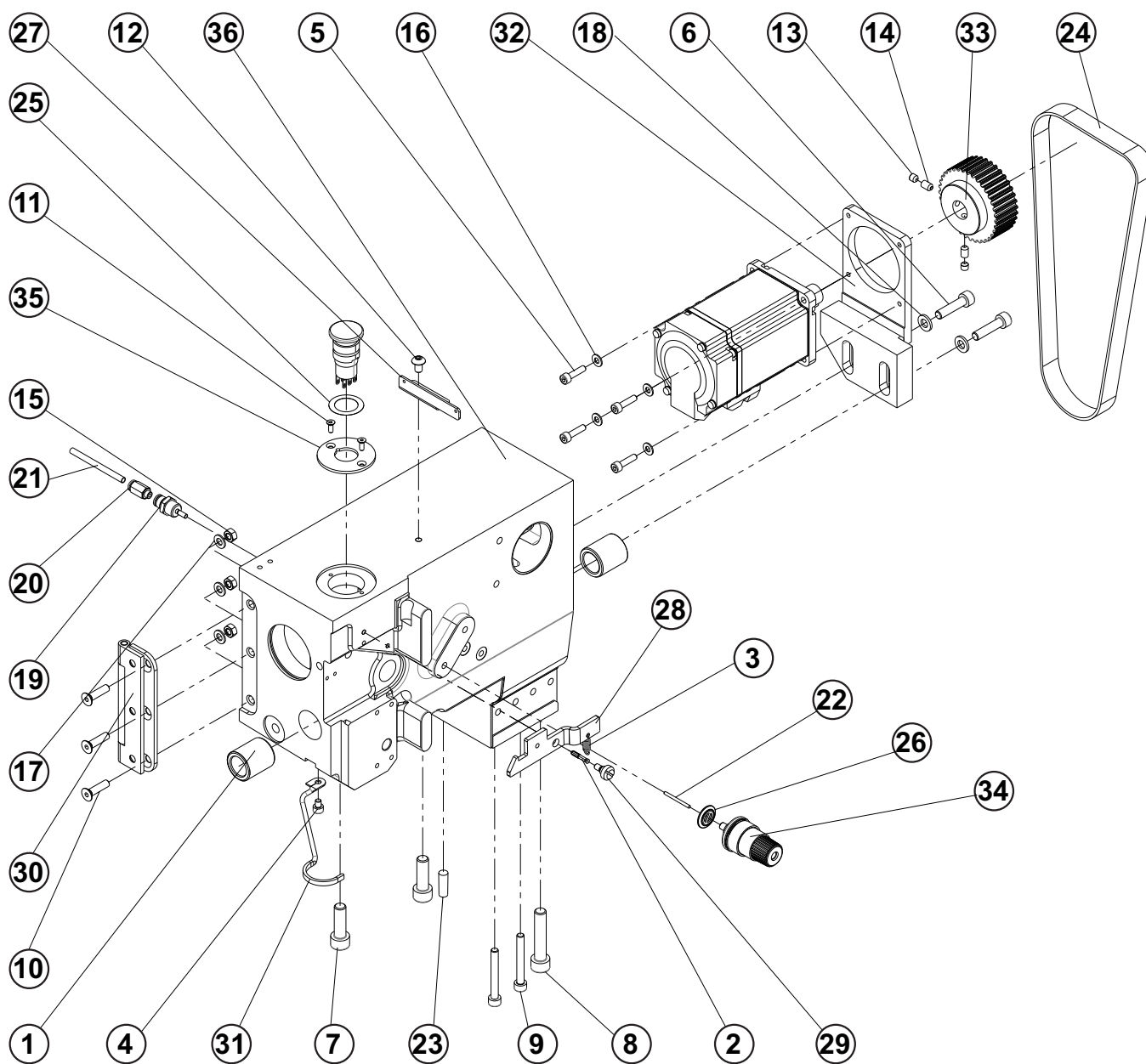
## THREAD DRAW-OFF



## THREAD DRAW-OFF

DET	PART NUMBER	DESCRIPTION	QTY.
01	01.6551.0.000	O-RING 1,78x2.57	1
02	01.7447.1.000	GUIDE	1
03	07.6045.0.053	PIN 6m6X20	1
04	08.6000.3.006	SCREW M3-6	1
05	08.6000.4.010	SCREW M4-10	1
06	08.6000.4.016	SCREW M4-16	6
07	08.6000.5.016	SCREW M5-16	4
08	08.6200.4.016	SCREW M4-16	2
09	08.6400.4.004	SCREW M4-4	1
10	08.6400.5.010	SCREW M5-10	1
11	08.6710.6.000	NUT M6	1
12	08.6800.4.000	WASHER 4	2
13	08.6850.3.000	WASHER 3,2	1
14	08.6850.4.000	WASHER M4	2
15	12.0008.3.416	AIR TUBE- J1B	—
16	12.0008.3.433	CYLINDER	1
17	12.0010.3.027	CONNECTOR	2
18	12.0010.3.080	AIR TUBE- J1A	—
19	12.0010.4.013	CABEL BINDER 200x7,8	1
20	12.1045.0.004	RETAINING RING 4	1
21	22.0046.0.000	HREAD GUIDE BRACKET	1
22	22.0091.0.000	HREAD TAKE-UP	1
23	22.0161.0.000	PIVOT ECCENTRIC	1
24	22.1415.0.050	KNIFE	1
25	22.1422.0.000	KNIFE SHAFT BUSHING	1
26	22.1436.0.000	RETAINER DRIVE PLATE	2
27	24.0009.0.000	WASHER	1
28	24.0010.0.000	CLAMP COLLAR 10H7	1
29	24.0011.0.000	KNIFE DRIVE LEVER	1
30	24.0014.0.000	PIVOT	1
31	24.0016.0.000	CYLINDER PIVOT STUD ASSEMBLY	1
32	24.0037.0.000	DRAW BAR CYLINDER	1
33	24.0039.1.000	ENSION RELEASE BRACKET	1
34	24.0061.0.000	HREAD TAKE-UP SHOULDER SCREW	1
35	24.0062.0.000	KNIFE GUIDE LINK	1
36	24.0063.0.000	HREAD TAKE-UP	1
37	24.1430.1.000	DRIVE PLATE	1

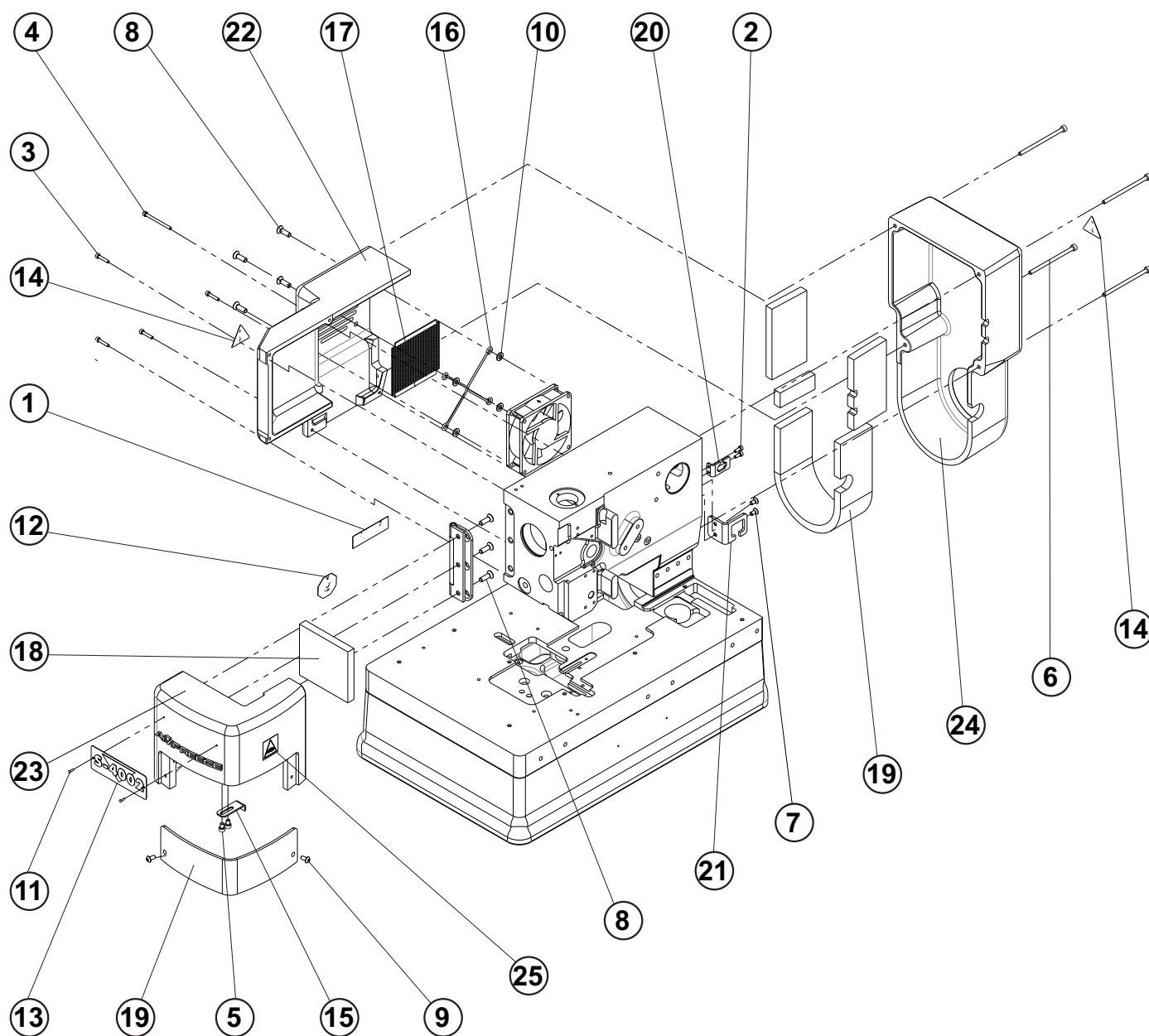
## HEAD



## HEAD

DET	PART NUMBER	DESCRIPTION	QTY.
01	01.7806.0.000	BUSHING	2
02	07.6045.0.037	PIN 3-16	1
03	07.6440.0.051	SPRING	1
04	08.6000.4.005	SCREW M4-5	1
05	08.6000.4.016	SCREW M4-16	4
06	08.6000.6.025	SCREW M6-25	2
07	08.6000.8.025	SCREW M8-25	2
08	08.6000.8.040	SCREW M8-40	1
09	08.6002.5.040	SCREW M5-40	2
10	08.6100.5.020	SCREW M5-20	3
11	08.6102.3.008	SCREW M3-8	2
12	08.6200.5.008	SCREW M5-8	1
13	08.6400.5.005	SCREW M5-5	2
14	08.6400.5.008	SCREW M5-8	2
15	08.6700.5.000	NUT M5	3
16	08.6850.4.000	WASHER M4	4
17	08.6850.5.000	WASHER 5,3	3
18	08.6850.6.000	WASHER 6,4	2
19	12.0008.3.413	CYLINDER	1
20	12.0010.3.027	CONNECTOR	1
21	12.0010.3.080	AIR TUBE- J1A1	—
22	12.1010.2.003	PIN 2m6-24	1
23	12.1011.0.001	PIN 6-20	1
24	12.5050.2.009	BELT	1
25	12.8000.0.047	LABEL, EMERGENCY STOP	1
26	17.0082.8.082	TENSION DISC	1
27	22.0054.0.000	UPPER THREAD GUIDE	1
28	22.0058.0.000	SEWING HEAD LATCH	1
29	22.0062.0.000	SCREW M4-3	1
30	22.6002.0.000	HEAD HINGE ASSY.	1
31	24.0044.0.000	NEEDLE GUARD	1
32	24.0106.1.000	MOTOR BRACKET	1
33	24.0108.0.000	MOTOR PULLEY - MITSUBISHI	1
34	24.0119.0.050	TENSION DISC ASSY.	1
35	24.0148.0.000	COVER, EMERGENCY STOP	1
36	24.6000.2.000	HEAD	1

# COVERS

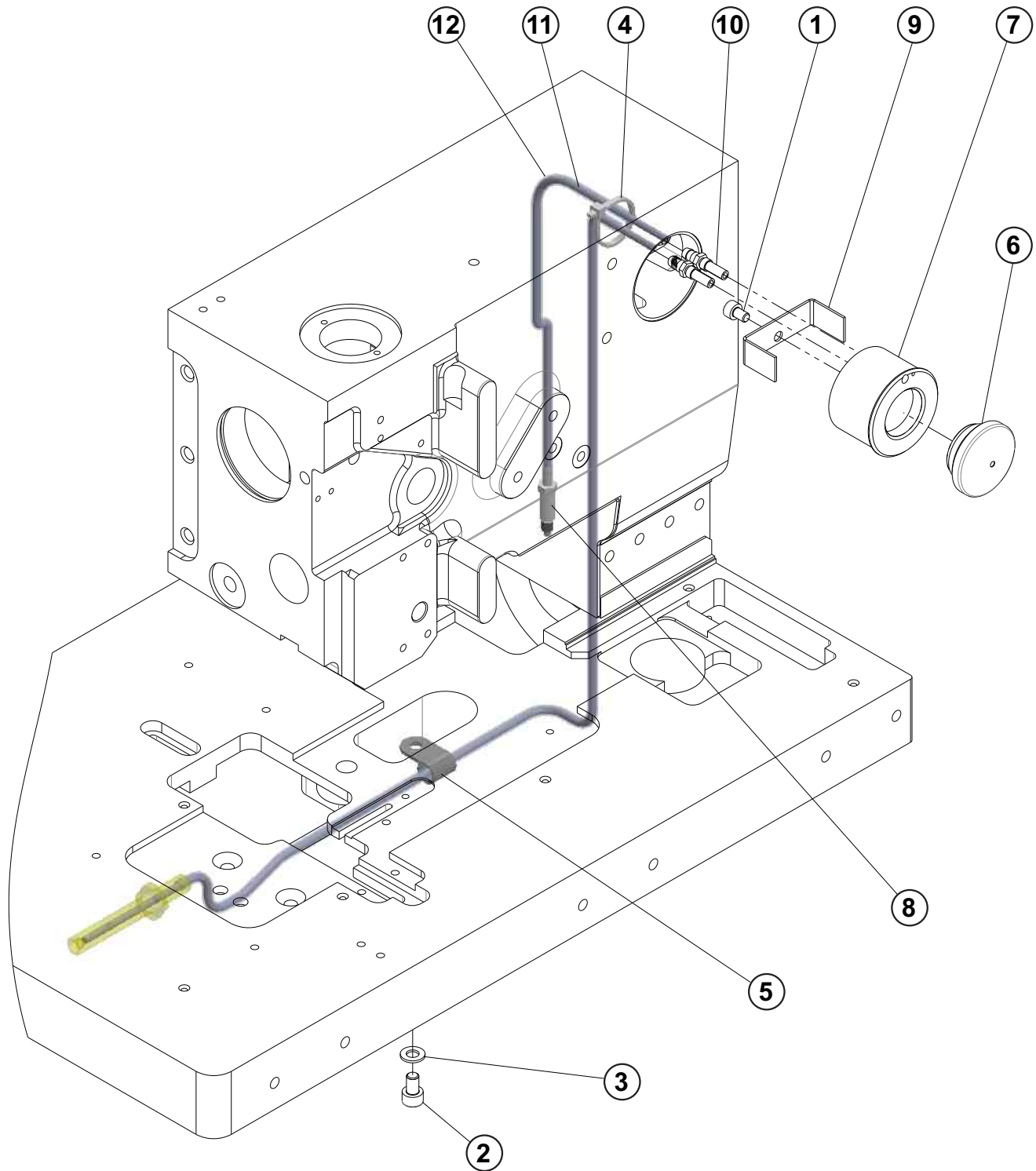




## COVERS

DET	PART NUMBER	DESCRIPTION	QTY.
01	05.1394.0.000	LABEL	1
02	08.6000.3.008	SCREW M3-8	2
03	08.6000.3.016	SCREW M3-16	4
04	08.6000.3.040	SCREW M3-40	1
05	08.6000.4.006	SCREW M4-6	2
06	08.6000.4.070	SCREW M4-70	4
07	08.6100.4.008	SCREW M4-8	2
08	08.6100.5.016	SCREW M5-16	7
09	08.6200.4.008	SCREW M4-8	2
10	08.6850.5.000	WASHER 5,3	4
11	12.1016.0.002	NAIL	2
12	12.8000.0.438	LABEL - GUALITY	1
13	12.8000.1.061	LABEL S-4002	1
14	17.0097.5.174	LABEL- WARNING	2
15	22.0057.0.000	COVER LATCH	1
16	24.0067.0.000	FAN RACK	1
17	24.0068.0.000	NET	1
18	24.0112.0.000	COVER SOUND DEADENER	1
19	24.0154.0.000	EYE SHIELD	1
20	24.3102.0.000	CABLE HOLDER	1
21	24.3103.0.000	CABLE HOLDER	1
22	24.6001.4.000	HEAD COVER	1
23	24.6003.0.000	NEEDLE BAR COVER	1
24	24.6004.2.001	PULLEY COVER	1
25	27513603	LABEL CAUTION	1

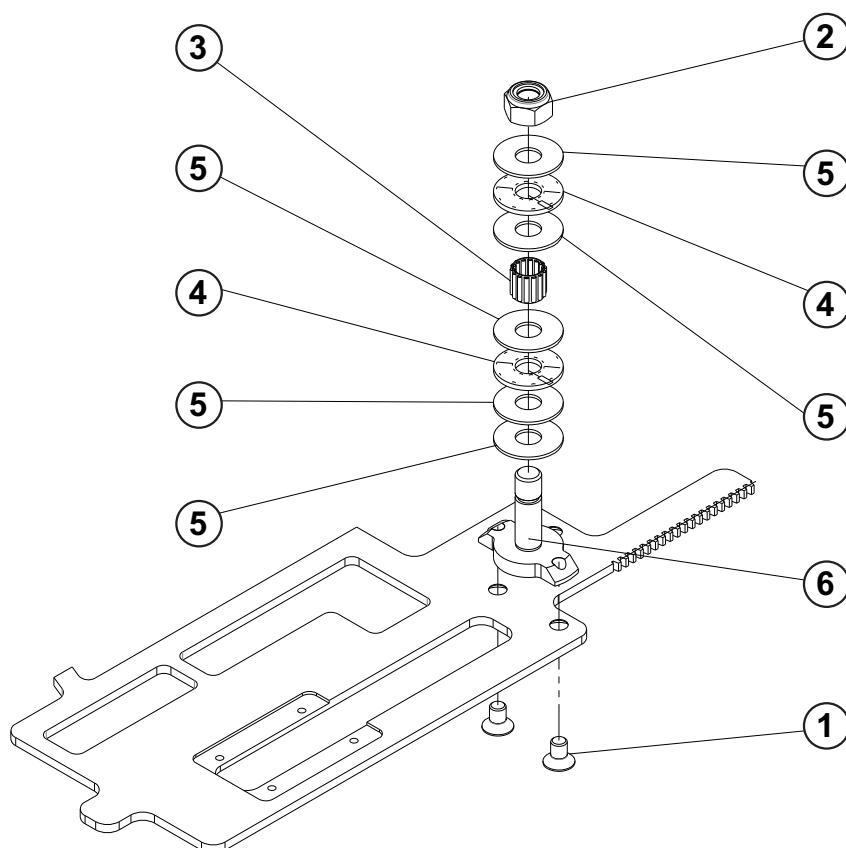
## LUBRICATION



## LUBRICATION

DET	PART NUMBER	DESCRIPTION	QTY.
01	08.6000.4.006	SCREW M4-6	1
02	08.6002.5.008	SCREW M5-8	1
03	08.6852.5.000	WASHER 5,3	1
04	12.0008.3.023	TY-WRAP	1
05	12.0008.4.225	CLAMP	1
06	17.0095.1.329	OIL INDICATOR	1
07	22.0104.0.000	OIL GAUGE RESERVOIR	1
08	22.0108.0.000	WICK HOLDER	1
09	22.0120.0.000	HOLDER	1
10	22.0229.0.000	STRAIGHT FITTING	2
11	24.0139.1.000	LUBRICATING WICK KIT	1
12	24.0141.1.000	OIL TUBING KIT	1

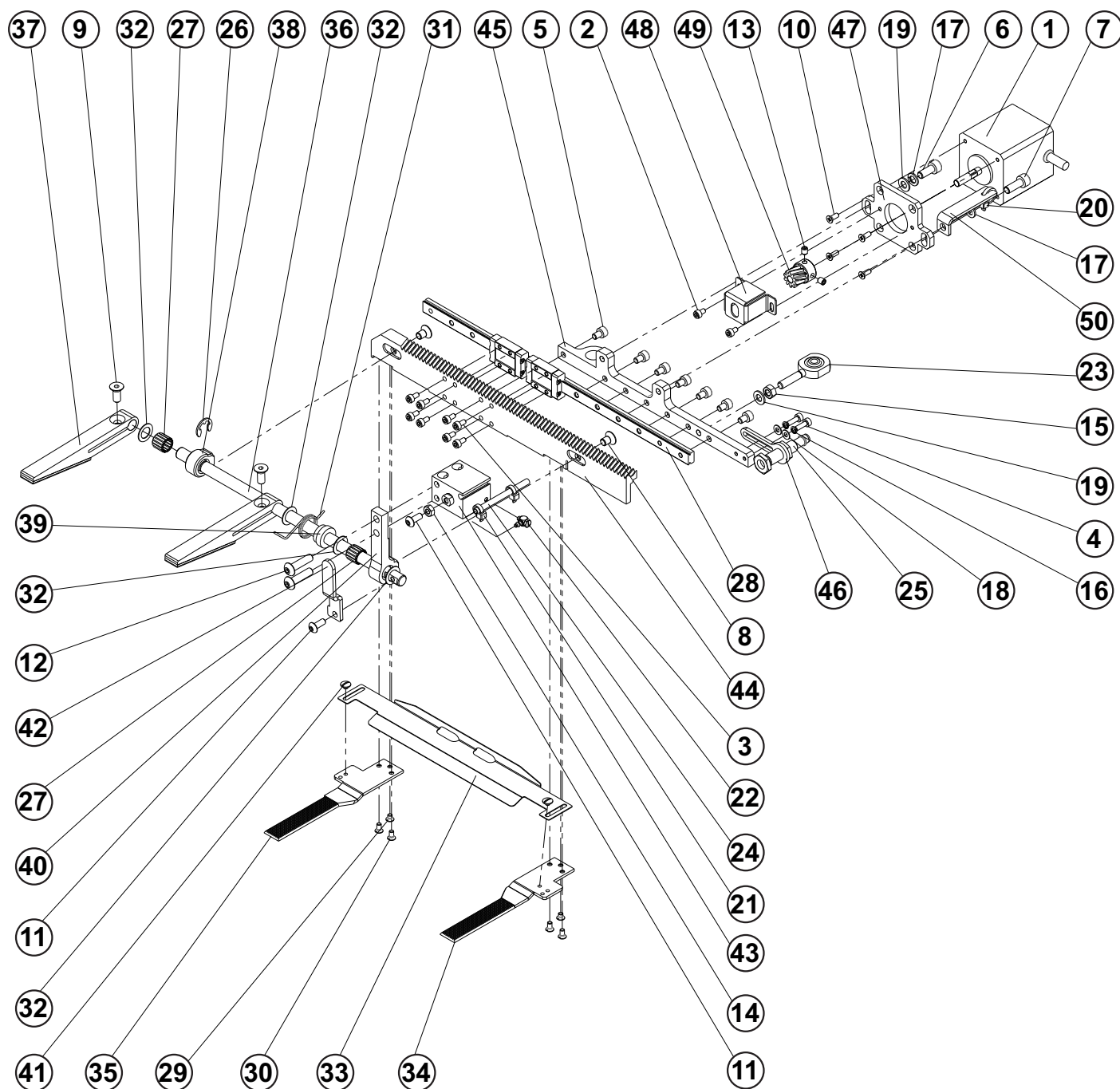
## INDEXER CLAMPING BRACKET



## INDEXER CLAMPING BRACKET

DET	PART NUMBER	DESCRIPTION	QTY.
01	08.6100.5.008	SCREW M5-8	2
02	08.6733.8.000	NUT M8	1
03	12.2050.0.007	NEEDLE BEARING	1
04	12.2060.0.006	AXIAL BEARING	2
05	12.2099.5.002	AXIAL RING	5
06	24.4109.0.000	INDEXER CLAMPING BRACKET	1

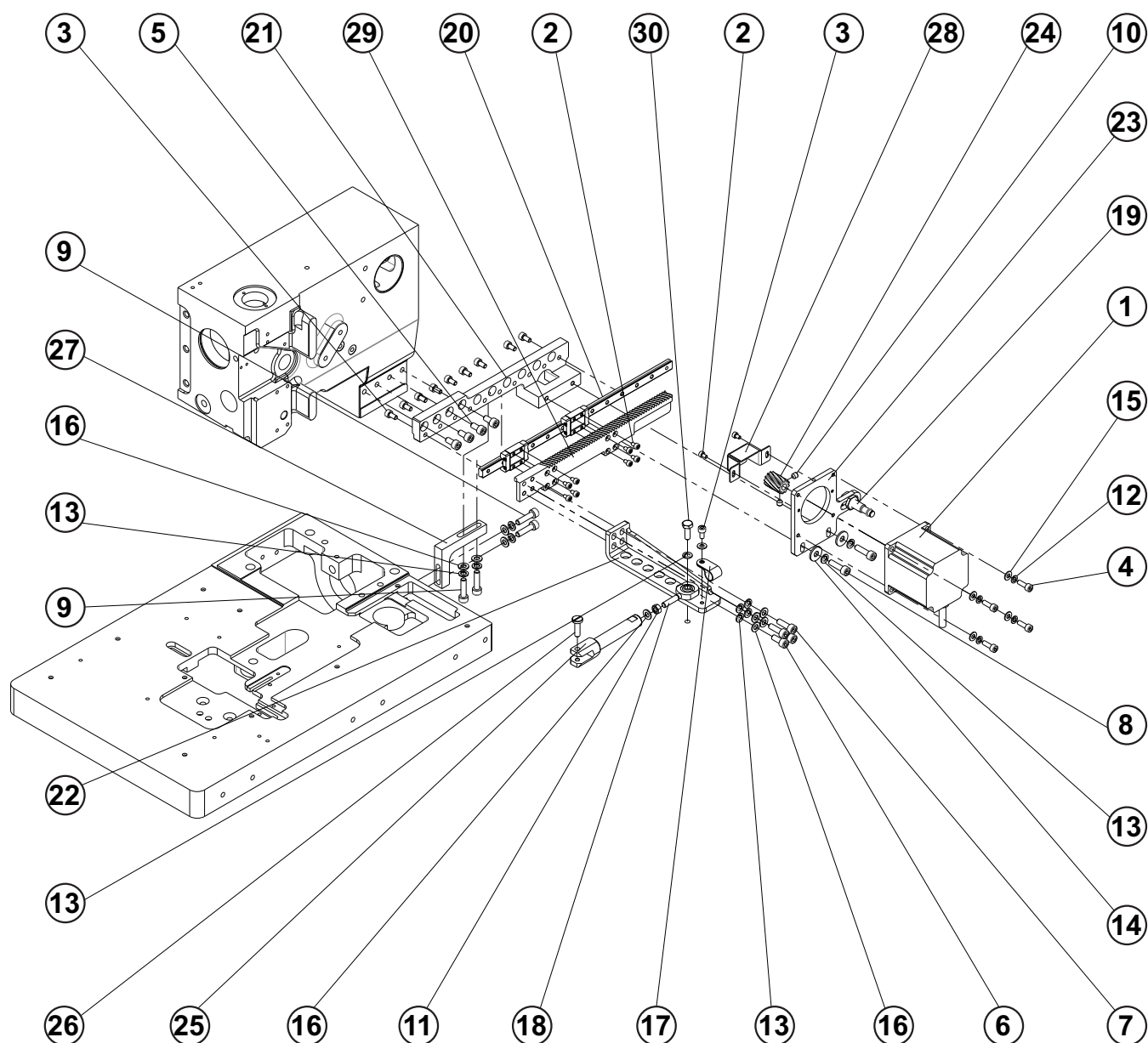
# INDEXER CLAMPING 30°



## INDEXER CLAMPING 30°

DET	PART NUMBER	DESCRIPTION	QTY.
01	06.2400.2.956	STEPPER MOTOR	1
02	08.6002.3.005	SCREW M3-5	2
03	08.6002.3.006	SCREW M3-6	8
04	08.6002.3.010	SCREW M3-10	2
05	08.6002.4.006	SCREW M4-6	7
06	08.6002.5.012	SCREW M5-12	1
07	08.6002.5.014	SCREW M5-14	1
08	08.6102.5.008	SCREW M5-8	2
09	08.6102.5.012	SCREW M5-12	2
10	08.6132.3.008	SCREW M3-8	4
11	08.6202.4.010	SCREW M4-10	2
12	08.6202.5.020	SCREW M5-20	2
13	08.6402.4.005	SCREW M4-5	2
14	08.6702.4.000	NUT M4	1
15	08.6702.5.000	NUT M5	1
16	08.6802.3.000	SPRING WASHER M3	2
17	08.6802.5.000	SPRING WASHER M5	2
18	08.6852.3.000	WASHER M3	2
19	08.6852.5.000	WASHER 5,3	2
20	12.0008.3.023	TY-WRAP	1
21	12.0008.3.023	TY-WRAP	2
22	12.0008.3.629	CONNECTOR	1
23	12.0008.6.531	BALL JOINT	1
24	12.0010.3.080	AIR TUBE- J11A	—
25	12.0010.4.093	SENSOR	1
26	12.1045.0.007	RETAINER RING 7	1
27	12.2050.0.007	NEEDLE BEARING	2
28	12.2070.1.057	LINEAR GUIDE	1
29	15.1431.0.100	SCREW M3-4	2
30	15.1436.0.100	SCREW M3-6	4
31	24.4010.0.000	SPRING	1
32	24.4068.0.005	WASHER	4
33	24.4110.0.000	MATERIAL GUIDE	1
34	24.4111.1.000	INDEXER CLAMPING MAT-RIGHT	1
35	24.4112.1.000	INDEXER CLAMPING MAT-LEFT	1
36	24.4113.0.000	INDEXER SHAFT	1
37	24.4114.0.000	INDEXER CLAMP FOOT	2
38	24.4115.0.000	INDEXER SHAFT HOLDER	1
39	24.4116.0.000	BUSHING	1
40	24.4117.0.000	CYLINDER BRACKET	1
41	24.4118.0.000	SCREW M3x0,35-2,5	2
42	24.4119.0.000	LEVER	1
43	24.4120.0.000	CYLINDER	1
44	24.4121.0.000	INDEXER CLAMP RACK	1
45	24.4122.0.000	LINEAR GUIDE HOLDER	1
46	24.4123.1.000	SENSOR BRACKET	1
47	24.4124.0.000	MOTOR HOLDER	1
48	24.4126.0.000	COVER GEAR	1
49	24.4127.0.000	MOTOR GEAR 10z-20° RIGHT	1
50	24.4143.0.000	BRACKET	1

## Y - AXIS INDEXER

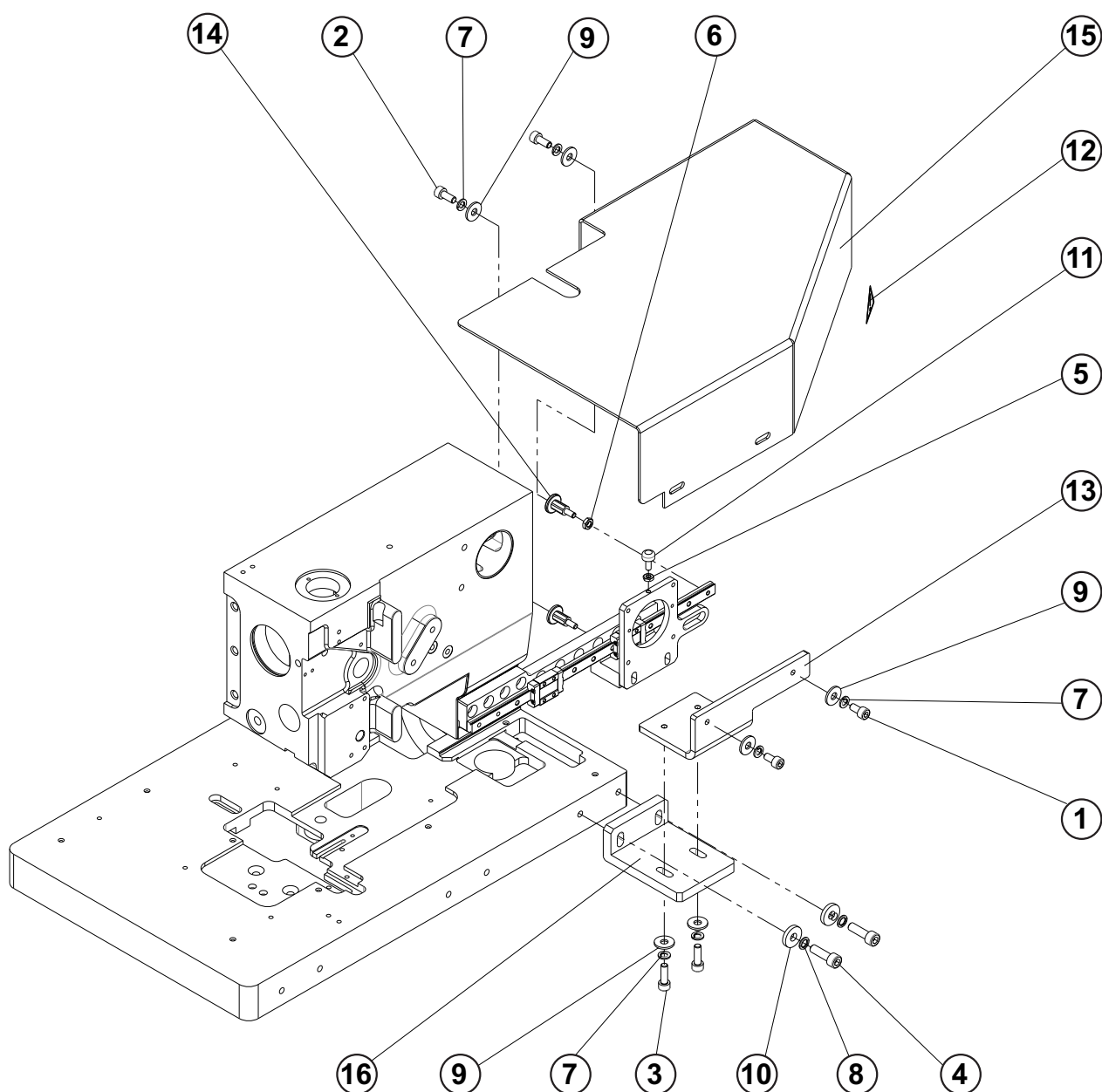




## Y - AXIS INDEXER

DET	PART NUMBER	DESCRIPTION	QTY.
01	06.2400.2.958	MOTOR - INDEXER	1
02	08.6002.3.005	SCREW M3-5	10
03	08.6002.4.008	SCREW M4-8	10
04	08.6002.4.012	SCREW M4-12	4
05	08.6002.5.010	SCREW M5-10	4
06	08.6002.5.012	SCREW M5-12	2
07	08.6002.5.016	SCREW M5-16	2
08	08.6002.5.018	SCREW M5-18	2
09	08.6002.5.020	SCREW M5-20	4
10	08.6402.5.005	SCREW M5-5	2
11	08.6702.5.000	NUT M5	1
12	08.6802.4.000	SPRING WASHER M4	4
13	08.6802.5.000	SPRING WASHER M5	11
14	08.6842.5.000	WASHER 5	2
15	08.6852.4.000	WASHER M4	5
16	08.6852.5.000	WASHER 5,3	9
17	12.0008.4.089	CLAMP CABLE	1
18	12.0008.6.531	BALL JOINT	1
19	12.0010.4.093	SENSOR	1
20	12.2070.1.057	LINEAR GUIDE	1
21	24.4129.0.000	LINEAR GUIDE BRACKET-Y AXIS	1
22	24.4131.0.000	BRACKET	1
23	24.4132.0.000	MOTOR HOLDER-Y AXIS	1
24	24.4133.0.000	MOTOR GEAR 12z-20° RIGHT	1
25	24.4135.0.000	CONNECTING LEVER	1
26	24.4136.0.000	STUD	1
27	24.4137.0.000	HOLDER	1
28	24.4138.0.000	COVER GEAR	1
29	24.4146.0.000	RACK - Y AXIS	1
30	24.4147.0.000	STUD	1

## INDEXER COVER

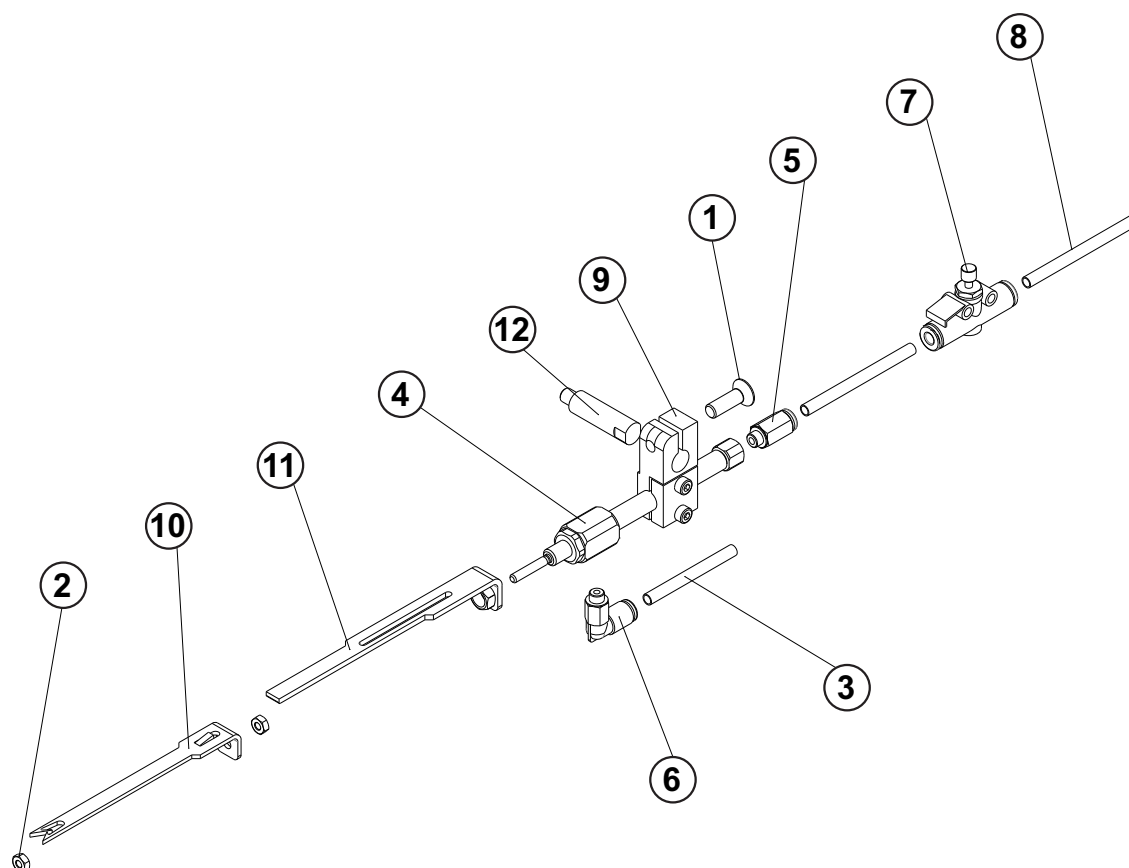


# INDEXER COVER

DET	PART NUMBER	DESCRIPTION	QTY.
01	08.6002.5.010	SCREW M5-10	2
02	08.6002.5.012	SCREW M5-12	2
03	08.6002.5.016	SCREW M5-16	2
04	08.6002.6.020	SCREW M6-20	2
05	08.6712.4.000	NUT M4	1
06	08.6712.5.000	NUT M5	1
07	08.6802.5.000	SPRING WASHER M5	6
08	08.6802.6.000	SPRING WASHER M6	2
09	08.6842.5.000	WASHER 5	6
10	08.6892.6.000	WASHER M6	2
11	12.0008.6.532	SCREW MOUNT BUMPER TB-4	1
12	17.0097.5.174	LABEL- WARNING	1
13	24.4140.0.000	HOLDER	1
14	24.4141.0.000	STUD	2
15	24.4142.0.000	Y-AXIS INDEXER COVER	1
16	24.4145.0.000	COVER BRACKET	1

## THREAD PICK-UP

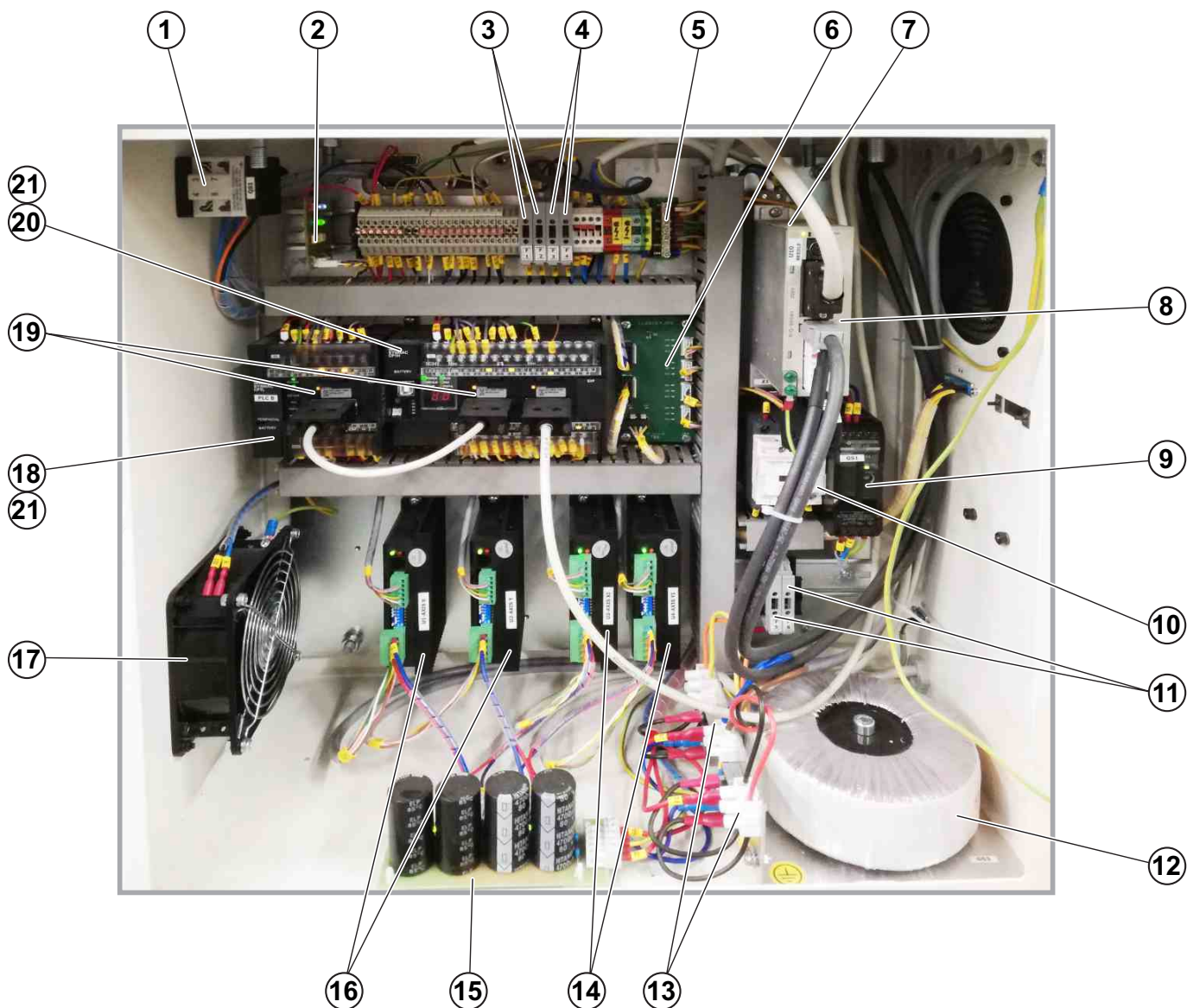
---



## THREAD PICK-UP

DET	PART NUMBER	DESCRIPTION	QTY.
01	08.6102.5.016	SCREW M5-16	1
02	08.6702.3.000	NUT M3	1
03	12.0008.3.416	AIR TUBE- J11B	—
04	12.0008.3.499	CYLINDER	1
05	12.0010.3.027	CONNECTOR	1
06	12.0010.3.028	CONNECTOR	1
07	12.0010.3.029	SPEED VALVE	1
08	12.0010.3.080	AIR TUBE- J11A	—
09	24.4001.0.050	CYLINDER HOLDER ASSEMBLY	1
10	24.4002.0.000	PICK-UP	1
11	24.4003.0.000	SUPPORT	1
12	24.4004.0.000	STUD	1

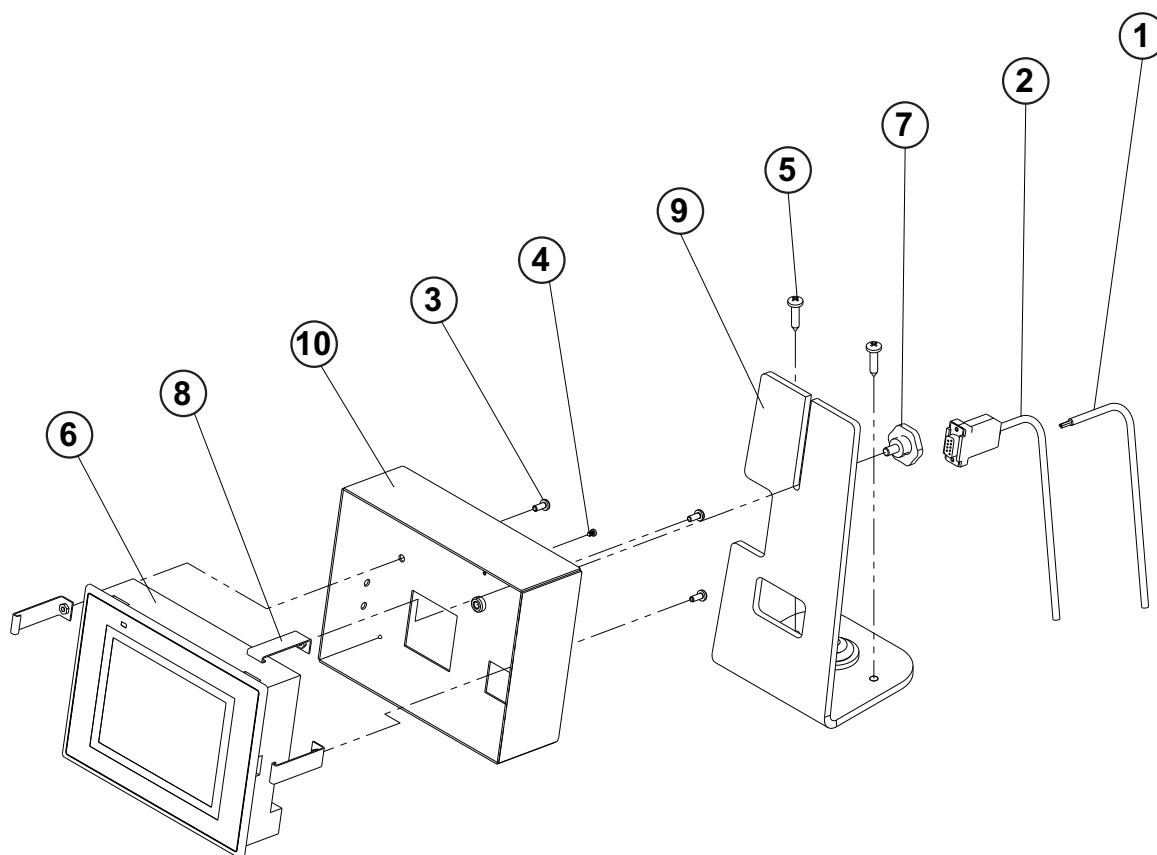
## ELECTRICAL



## ELECTRICAL

DET	PART NUMBER	DESCRIPTION	QTY.
01	12.0010.4.200	MAIN POWER SWITCH (QS1)	1
02	12.0010.4.285	INTERFACE OB1 (OB1)	1
03	12.0008.4.665	FUSE - T2A (F1,F2)	2
04	12.0008.4.664	FUSE - T10A (F3,F4)	2
05	12.0008.4.050	BRIDGE GND	1
06	12.0010.4.385	BOARD TERMINAL (TB1)	1
07	12.0010.4.251	FILTER R7A (Z1)	1
08	06.8024.0.605	SERVODRIVE 400W (U10)	1
09	12.0010.4.168	POWER 24V DC (GS1)	1
10	12.0008.4.833	CONTACTOR 24V (KM1)	1
11	12.0008.4.664	FUSE - T10A (F5,F6)	2
12	12.0010.4.007	TOROID TRAFO 30+30V AC (GS2)	1
13	12.0008.4.770	RECTIFIER B250C25 (DU1,2)	2
14	12.0010.4.249	DRIVER 2-PHASE (U3,U4)	2
15	12.0010.4.134	CAPACITOR BOARD (CB1)	1
16	12.0010.4.353	DRIVER 3-PHASE (U1,U2)	2
17	12.0008.4.682	FAN 230V AC (EV1)	1
18	06.8024.0.602	PLC CP1L (PLC B)	1
19	12.0010.4.067	PORT RS232	3
20	06.8024.0.601	PLC CP1H (PLC A)	1
21	12.0010.4.163	BATTERY PLC	2

## PANEL KIT

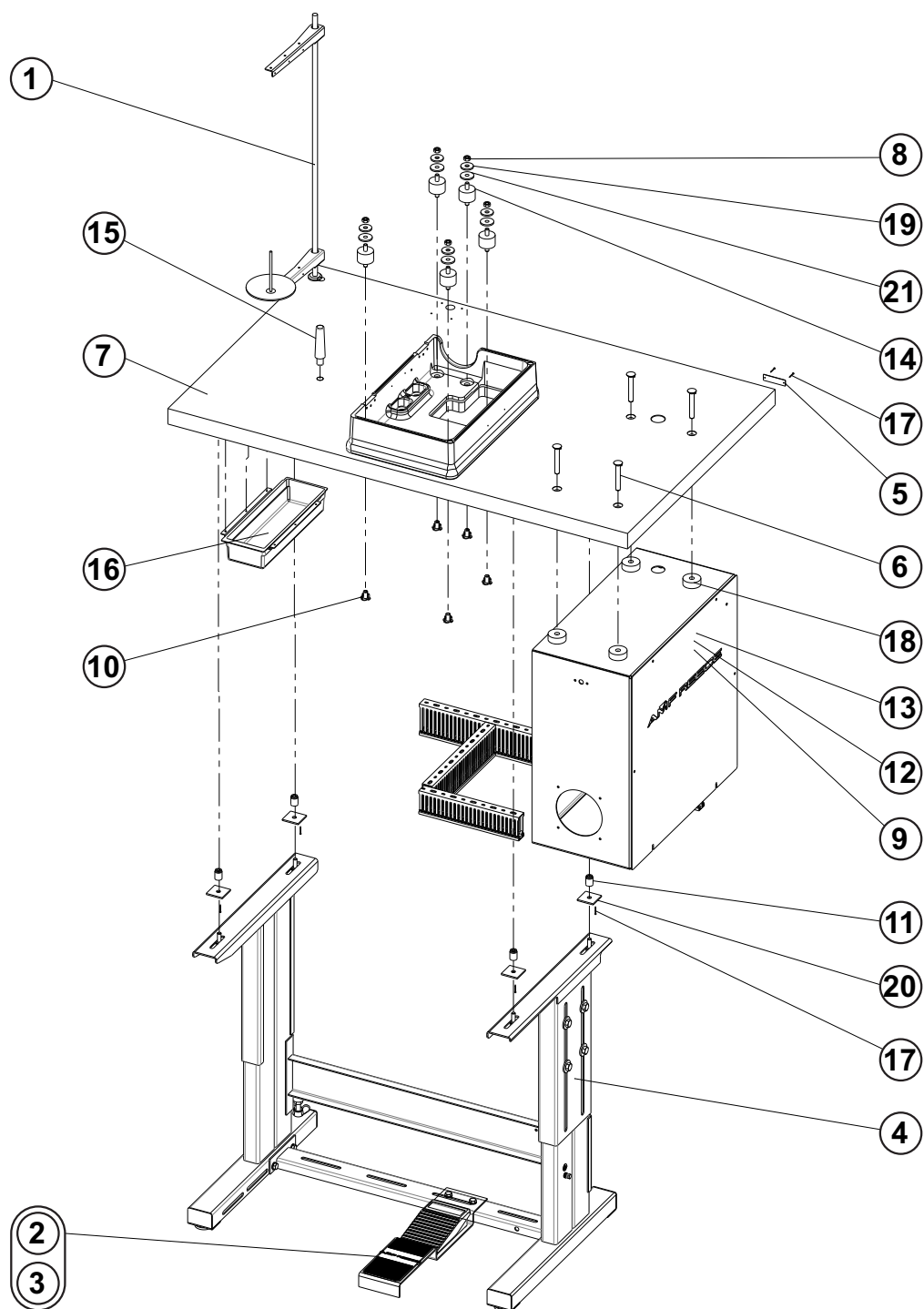




## PANEL KIT

DET	PART NUMBER	DESCRIPTION	QTY.
01	06.2400.0.619	CABLE DISPLAY POWER	1
02	06.2400.0.620	CABLE DISPLAY	1
03	08.6032.4.010	SCREW M4-10	3
04	08.6662.3.006	SCREW	1
05	08.6663.5.025	SCREW 4,8-25	2
06	12.0010.4.300	DISPLAY	1
07	19.0014.7.003	SCREW-PANEL	1
08	24.0168.0.000	DISPLAY HOLDER	3
09	24.0174.0.000	DISPLAY STAND	1
10	68.0358.0.800	PANEL COVER	1

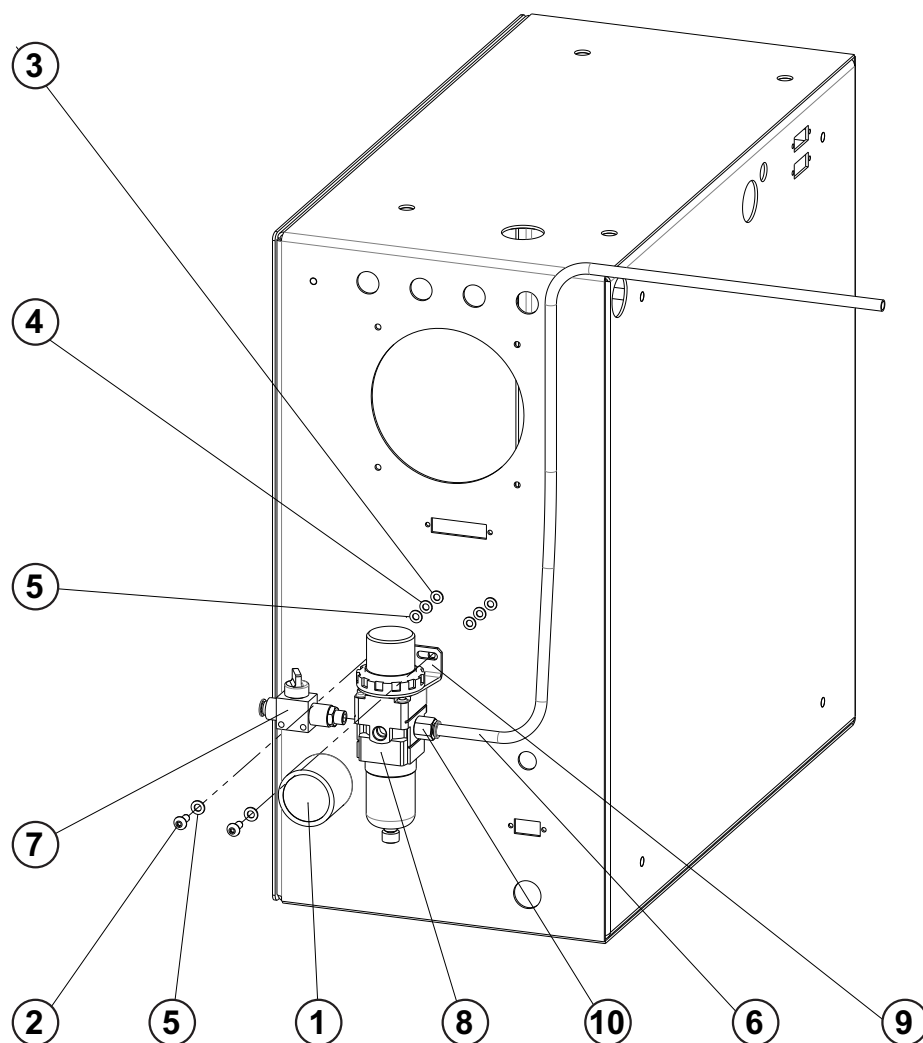
## TABLE



## TABLE

DET	PART NUMBER	DESCRIPTION	QTY.
01	22.0219.0.000	THREAD STAND	1
02	19.0007.9.037	PEDAL ASSEMBLY	(1)
03	06.8800.0.001	PEDAL	(1)
04	04.1416.1.003	LABEL	1
05	04.9000.2.123	FRAME KIT ASSY.	1
06	04.9015.0.362	SCREW	4
07	04.9024.0.905	TABLE TOP CROSSWISE S4002 ISBH+I 30°	1
08	08.6700.8.000	NUT M8	5
09	08.6702.0.000	NUT M10	4
10	08.6742.8.000	NUT M8	5
11	08.6752.8.000	NUT M8	4
12	08.6802.0.000	SPRING WASHER M10	4
13	08.6852.0.000	WASHER 10,5	4
14	12.0008.6.801	SHOCK MOUNT	5
15	12.0008.6.900	MACHINE REST TABLE PIN	1
16	12.0008.6.901	BOX	1
17	12.1016.1.000	NAIL 1,6x20	6
18	15.6005.0.990	SHOCK MOUNT	4
19	17.0019.0.441	WASHER	5
20	17.0094.0.200	WASHER	4
21	17.0095.1.272	RUBBER WASHER	5

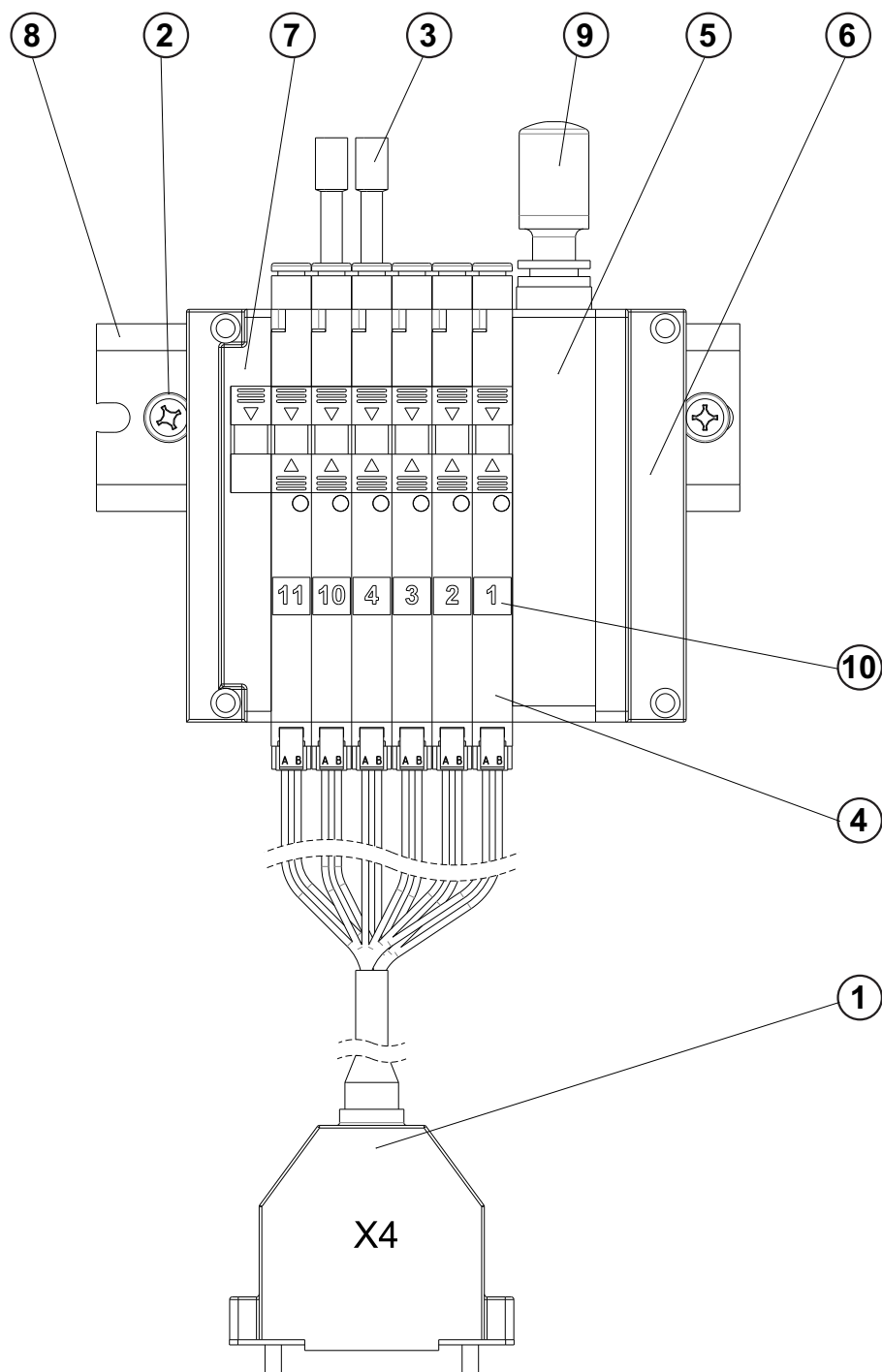
## FILTER REGULATOR



## FILTER REGULATOR

DET	PART NUMBER	DESCRIPTION	QTY.
01	06.7300.0.027	PRESSURE GAUGE	1
02	08.6202.5.012	SCREW M5x12	2
03	08.6702.5.000	NUT M5	2
04	08.6802.5.000	SPRING WASHER M5	2
05	08.6852.5.000	WASHER 5,3	4
06	12.0008.3.415	AIR TUBE	—
07	12.0008.3.463	HAND VALVE	1
08	12.0010.3.137	FILTER REGULATOR	1
09	12.0010.3.138	REGULATOR BRACKET	1
10	12.0010.3.141	CONNECTOR	1

## VALVE BLOCK



## VALVE BLOCK

DET	PART NUMBER	DESCRIPTION	QTY.
01	06.2400.0.640	CABLE ASSEMBLY	1
02	08.6676.4.025	SCREW	2
03	12.0008.3.426	PLUG	2
04	12.0008.3.828	5/2 VALVE	6
05	12.0008.3.829	AIR SUPPLY BLOCK	1
06	12.0008.3.830	END PLATE D	1
07	12.0008.3.831	END PLATE U	1
08	12.0008.3.832	DIN LATH, L=132mm	1
09	12.0010.3.030	SILENCER	1
10	12.8000.0.446	LABELS - VALVES 1-30	1





## INDEX

PART NUMBER	PAGE	DET	QTY	PART NUMBER	PAGE	DET	QTY	PART NUMBER	PAGE	DET	QTY
27513603	3-25	25	1	08.6000.3.006	3-19	2	1	08.6002.5.010	3-33	5	4
01.1382.0.000	3-11	1	1	08.6000.3.006	3-21	4	1	08.6002.5.010	3-35	1	2
01.1397.0.000	3-11	2	2	08.6000.3.008	3-25	2	2	08.6002.5.012	3-31	6	1
01.2084.0.000	3-17	01	1	08.6000.3.010	3-11	4	1	08.6002.5.012	3-33	6	2
01.2193.0.000	3-3	1	1	08.6000.3.010	3-13	3	1	08.6002.5.012	3-35	2	2
01.2376.0.000	3-5	1	4	08.6000.3.016	3-25	3	4	08.6002.5.014	3-31	7	1
01.6551.0.000	3-3	2	1	08.6000.3.040	3-25	4	1	08.6002.5.016	3-33	7	2
01.6551.0.000	3-21	1	1	08.6000.4.005	3-23	4	1	08.6002.5.016	3-35	3	2
01.7447.1.000	3-3	3	1	08.6000.4.006	3-19	3	1	08.6002.5.018	3-33	8	2
01.7447.1.000	3-21	2	1	08.6000.4.006	3-25	5	2	08.6002.5.020	3-33	9	4
01.7804.0.000	3-3	4	1	08.6000.4.006	3-27	1	1	08.6002.5.022	3-9	9	8
01.7805.0.000	3-3	5	1	08.6000.4.010	3-21	5	1	08.6002.5.040	3-23	9	2
01.7805.0.000	3-19	1	2	08.6000.4.014	3-11	5	2	08.6002.6.012	3-5	6	2
01.7806.0.000	3-23	1	2	08.6000.4.014	3-13	4	2	08.6002.6.020	3-35	4	2
01.7809.0.000	3-3	6	1	08.6000.4.016	3-21	6	6	08.6002.6.022	3-17	02	4
02.0750.2.110	3-3	7	1	08.6000.4.016	3-23	5	4	08.6012.4.010	3-15	1	1
04.1416.1.003	3-43	4	1	08.6000.4.070	3-25	6	4	08.6032.4.010	3-41	3	3
04.9000.2.123	3-43	5	1	08.6000.5.010	3-9	6	1	08.6100.3.008	3-13	6	2
04.9015.0.362	3-43	6	4	08.6000.5.016	3-3	8	1	08.6100.3.008	3-19	9	1
04.9024.0.905	3-43	7	1	08.6000.5.016	3-19	4	1	08.6100.4.008	3-25	7	2
05.1394.0.000	3-25	1	1	08.6000.5.016	3-21	7	4	08.6100.5.008	3-29	1	2
06.2400.0.619	3-41	1	1	08.6000.6.016	3-3	9	2	08.6100.5.012	3-5	7	3
06.2400.0.620	3-41	2	1	08.6000.6.016	3-19	5	2	08.6100.5.012	3-15	2	5
06.2400.0.640	3-47	1	1	08.6000.6.025	3-13	5	1	08.6100.5.016	3-25	8	7
06.2400.0.651	3-9	1	1	08.6000.6.025	3-23	6	2	08.6100.5.020	3-11	6	2
06.2400.0.652	3-9	2	1	08.6000.8.025	3-23	7	2	08.6100.5.020	3-15	3	1
06.2400.0.657	3-9	29	1	08.6000.8.040	3-23	8	1	08.6100.5.020	3-23	10	3
06.2400.0.657	3-19	37	1	08.6002.3.005	3-31	2	2	08.6100.6.035	3-19	10	1
06.2400.2.956	3-31	1	1	08.6002.3.005	3-33	2	10	08.6102.3.008	3-9	10	2
06.2400.2.958	3-33	1	1	08.6002.3.006	3-5	3	4	08.6102.3.008	3-23	11	2
06.7300.0.027	3-45	1	1	08.6002.3.006	3-31	3	8	08.6102.4.008	3-7	3	2
06.8024.0.601	3-39	20	1	08.6002.3.008	3-5	4	3	08.6102.5.008	3-31	8	2
06.8024.0.602	3-39	18	1	08.6002.3.008	3-9	7	2	08.6102.5.012	3-31	9	2
06.8024.0.605	3-39	8	1	08.6002.3.010	3-31	4	2	08.6102.5.016	3-37	1	1
06.8800.0.001	3-43	3	(1)	08.6002.3.016	3-7	1	2	08.6112.3.008	3-17	03	10
07.6045.0.037	3-9	3	2	08.6002.4.006	3-31	5	7	08.6112.3.016	3-17	04	2
07.6045.0.037	3-23	2	1	08.6002.4.008	3-19	6	6	08.6132.3.008	3-31	10	4
07.6045.0.046	3-5	2	2	08.6002.4.008	3-33	3	10	08.6200.4.008	3-13	7	1
07.6045.0.053	3-21	3	1	08.6002.4.010	3-19	7	2	08.6200.4.008	3-25	9	2
07.6321.0.001	3-9	4	1	08.6002.4.012	3-7	2	2	08.6200.4.016	3-21	8	2
07.6321.0.025	3-13	1	2	08.6002.4.012	3-19	8	2	08.6200.5.008	3-23	12	1
07.6440.0.028	3-13	2	2	08.6002.4.012	3-33	4	4	08.6200.5.012	3-15	4	6
07.6440.0.033	3-9	5	2	08.6002.4.016	3-9	8	2	08.6200.5.020	3-15	5	1
07.6440.0.051	3-23	3	1	08.6002.4.022	3-5	5	2	08.6202.4.010	3-31	11	2
08.3000.6.005	3-11	3	2	08.6002.5.008	3-27	2	1	08.6202.5.012	3-45	2	2

## INDEX

PART NUMBER	PAGE	DET	QTY	PART NUMBER	PAGE	DET	QTY	PART NUMBER	PAGE	DET	QTY
08.6202.5.016	3-5	8	2	08.6800.4.000	3-11	9	2	12.0008.3.023	3-31	21	2
08.6202.5.020	3-31	12	2	08.6800.4.000	3-21	12	2	12.0008.3.413	3-23	19	1
08.6400.3.005	3-3	10	4	08.6802.0.000	3-43	12	4	12.0008.3.415	3-45	6	—
08.6400.4.004	3-3	11	2	08.6802.3.000	3-31	16	2	12.0008.3.416	3-5	14	—
08.6400.4.004	3-13	8	1	08.6802.4.000	3-7	6	2	12.0008.3.416	3-7	8	—
08.6400.4.004	3-21	9	1	08.6802.4.000	3-33	12	4	12.0008.3.416	3-21	15	—
08.6400.5.005	3-3	12	1	08.6802.5.000	3-9	14	8	12.0008.3.416	3-37	3	—
08.6400.5.005	3-19	11	2	08.6802.5.000	3-31	17	2	12.0008.3.426	3-47	3	2
08.6400.5.005	3-23	13	2	08.6802.5.000	3-33	13	11	12.0008.3.433	3-21	16	1
08.6400.5.008	3-23	14	2	08.6802.5.000	3-35	7	6	12.0008.3.463	3-45	7	1
08.6400.5.010	3-19	12	2	08.6802.5.000	3-45	4	2	12.0008.3.499	3-37	4	1
08.6400.5.010	3-21	10	1	08.6802.6.000	3-17	06	4	12.0008.3.629	3-31	22	1
08.6400.6.006	3-9	11	2	08.6802.6.000	3-35	8	2	12.0008.3.804	3-7	9	2
08.6402.3.004	3-7	4	2	08.6832.4.000	3-15	7	1	12.0008.3.828	3-47	4	6
08.6402.3.005	3-9	12	1	08.6842.5.000	3-33	14	2	12.0008.3.829	3-47	5	1
08.6402.3.005	3-19	13	1	08.6842.5.000	3-35	9	6	12.0008.3.830	3-47	6	1
08.6402.3.006	3-5	9	2	08.6850.3.000	3-21	13	1	12.0008.3.831	3-47	7	1
08.6402.4.005	3-31	13	2	08.6850.4.000	3-13	10	1	12.0008.3.832	3-47	8	1
08.6402.5.005	3-33	10	2	08.6850.4.000	3-19	14	1	12.0008.4.050	3-39	5	1
08.6662.3.006	3-41	4	1	08.6850.4.000	3-21	14	2	12.0008.4.052	3-15	8	1
08.6663.5.025	3-41	5	2	08.6850.4.000	3-23	16	4	12.0008.4.089	3-33	17	1
08.6676.4.025	3-47	2	2	08.6850.5.000	3-23	17	3	12.0008.4.197	3-15	9	2
08.6700.5.000	3-13	9	2	08.6850.5.000	3-25	10	4	12.0008.4.225	3-19	17	3
08.6700.5.000	3-15	6	2	08.6850.6.000	3-23	18	2	12.0008.4.225	3-27	5	1
08.6700.5.000	3-23	15	3	08.6850.8.000	3-11	10	1	12.0008.4.277	3-19	18	1
08.6700.8.000	3-11	7	1	08.6852.0.000	3-43	13	4	12.0008.4.280	3-13	11	1
08.6700.8.000	3-43	8	5	08.6852.3.000	3-9	15	2	12.0008.4.664	3-39	4	2
08.6702.0.000	3-43	9	4	08.6852.3.000	3-17	07	2	12.0008.4.664	3-39	11	2
08.6702.3.000	3-37	2	1	08.6852.3.000	3-31	18	2	12.0008.4.665	3-39	3	2
08.6702.4.000	3-31	14	1	08.6852.4.000	3-7	7	2	12.0008.4.682	3-39	17	1
08.6702.5.000	3-9	13	1	08.6852.4.000	3-9	16	2	12.0008.4.770	3-39	13	2
08.6702.5.000	3-31	15	1	08.6852.4.000	3-19	15	8	12.0008.4.833	3-39	10	1
08.6702.5.000	3-33	11	1	08.6852.4.000	3-33	15	5	12.0008.6.531	3-31	23	1
08.6702.5.000	3-45	3	2	08.6852.5.000	3-5	12	2	12.0008.6.531	3-33	18	1
08.6710.5.000	3-11	8	2	08.6852.5.000	3-9	17	9	12.0008.6.532	3-35	11	1
08.6710.6.000	3-21	11	1	08.6852.5.000	3-27	3	1	12.0008.6.800	3-13	12	1
08.6712.3.000	3-5	10	2	08.6852.5.000	3-31	19	2	12.0008.6.801	3-43	14	5
08.6712.4.000	3-35	5	1	08.6852.5.000	3-33	16	9	12.0008.6.900	3-43	15	1
08.6712.5.000	3-7	5	1	08.6852.5.000	3-45	5	4	12.0008.6.901	3-43	16	1
08.6712.5.000	3-35	6	1	08.6852.6.000	3-5	13	2	12.0010.3.027	3-21	17	2
08.6712.6.000	3-5	11	1	08.6892.6.000	3-17	08	4	12.0010.3.027	3-23	20	1
08.6733.3.000	3-17	5	2	08.6892.6.000	3-35	10	2	12.0010.3.027	3-37	5	1
08.6733.8.000	3-29	2	1	12.0008.3.023	3-19	16	2	12.0010.3.028	3-37	6	1
08.6742.8.000	3-43	10	5	12.0008.3.023	3-27	4	1	12.0010.3.029	3-37	7	1
08.6752.8.000	3-43	11	4	12.0008.3.023	3-31	20	1	12.0010.3.030	3-47	9	1

## INDEX

PART NUMBER	PAGE	DET	QTY	PART NUMBER	PAGE	DET	QTY	PART NUMBER	PAGE	DET	QTY
12.0010.3.034	3-7	10	1	12.2070.1.019	3-5	19	1	22.0046.0.000	3-21	21	1
12.0010.3.036	3-5	15	1	12.2070.1.057	3-31	28	1	22.0054.0.000	3-23	27	1
12.0010.3.080	3-5	16	—	12.2070.1.057	3-33	20	1	22.0057.0.000	3-25	15	1
12.0010.3.080	3-7	11	—	12.2099.5.002	3-29	5	5	22.0058.0.000	3-23	28	1
12.0010.3.080	3-21	18	—	12.3010.0.037	3-11	12	3	22.0062.0.000	3-23	29	1
12.0010.3.080	3-23	21	—	12.4030.0.002	3-19	21	1	22.0063.0.000	3-13	21	1
12.0010.3.080	3-31	24	—	12.5050.2.009	3-23	24	1	22.0064.0.000	3-11	18	1
12.0010.3.080	3-37	8	—	12.8000.0.047	3-23	25	1	22.0064.0.000	3-13	22	2
12.0010.3.119	3-7	12	2	12.8000.0.438	3-25	12	1	22.0091.0.000	3-21	22	1
12.0010.3.137	3-45	8	1	12.8000.0.446	3-47	10	1	22.0100.0.000	3-11	19	3
12.0010.3.138	3-45	9	1	12.8000.1.047	3-15	11	1	22.0100.0.000	3-13	23	4
12.0010.3.141	3-45	10	1	12.8000.1.061	3-25	13	1	22.0104.0.000	3-27	7	1
12.0010.3.194	3-5	17	1	12.8000.1.062	3-15	12	1	22.0105.0.000	3-11	20	1
12.0010.3.195	3-5	18	1	15.1431.0.100	3-31	29	2	22.0108.0.000	3-27	8	1
12.0010.4.007	3-39	12	1	15.1436.0.100	3-31	30	4	22.0110.0.000	3-13	24	1
12.0010.4.013	3-3	13	1	15.4410.0.400	3-19	22	1	22.0120.0.000	3-27	9	1
12.0010.4.013	3-21	19	1	15.6005.0.990	3-43	18	4	22.0161.0.000	3-21	23	1
12.0010.4.067	3-39	19	3	17.0011.1.149	3-19	23	4	22.0164.0.000	3-5	21	1
12.0010.4.093	3-31	25	1	17.0019.0.441	3-43	19	5	22.0175.0.000	3-3	18	1
12.0010.4.093	3-33	19	1	17.0019.1.062	3-13	13	1	22.0183.0.000	3-11	21	1
12.0010.4.134	3-39	15	1	17.0026.2.077	3-3	16	1	22.0183.0.000	3-13	25	1
12.0010.4.163	3-39	21	2	17.0031.0.460	3-5	20	2	22.0195.0.000	3-3	19	1
12.0010.4.168	3-39	9	1	17.0082.8.017	3-3	17	2	22.0214.0.000	3-13	26	1
12.0010.4.200	3-39	1	1	17.0082.8.082	3-23	26	1	22.0219.0.000	3-43	1	1
12.0010.4.249	3-39	14	2	17.0094.0.200	3-43	20	4	22.0223.0.000	3-5	22	1
12.0010.4.251	3-39	7	1	17.0095.1.272	3-43	21	5	22.0224.0.000	3-5	23	1
12.0010.4.285	3-39	2	1	17.0095.1.329	3-27	6	1	22.0229.0.000	3-27	10	2
12.0010.4.300	3-41	6	1	17.0097.5.174	3-25	14	2	22.0230.0.000	3-3	20	2
12.0010.4.353	3-39	16	2	17.0097.5.174	3-35	12	1	22.0232.0.000	3-11	22	1
12.0010.4.385	3-39	6	1	19.0007.9.037	3-43	2	(1)	22.0233.0.000	3-11	23	1
12.1010.2.003	3-23	22	1	19.0014.7.003	3-41	7	1	22.0239.0.000	3-3	21	2
12.1011.0.001	3-23	23	1	19.0082.3.464	3-19	24	1	22.0520.0.000	3-3	22	1
12.1016.0.002	3-15	10	4	20.0094.0.000	3-11	13	1	22.0525.0.050	3-3	23	1
12.1016.0.002	3-25	11	2	20.0111.0.000	3-11	14	1	22.0530.0.000	3-3	24	1
12.1016.1.000	3-43	17	6	20.0112.0.000	3-11	15	1	22.0535.0.100	3-3	25	1
12.1045.0.004	3-21	20	1	22.0006.0.000	3-19	25	1	22.0540.0.000	3-3	26	1
12.1045.0.007	3-31	26	1	22.0008.0.000	3-13	14	1	22.0541.0.000	3-3	27	1
12.1045.2.001	3-3	14	1	22.0009.0.050	3-13	15	1	22.0542.0.000	3-3	28	1
12.1045.2.001	3-19	19	1	22.0020.0.000	3-13	16	1	22.0545.0.000	3-3	29	1
12.2010.1.002	3-11	11	2	22.0022.0.000	3-11	16	1	22.0545.0.000	3-19	26	1
12.2050.0.003	3-3	15	1	22.0027.0.000	3-13	17	1	22.1010.0.000	3-15	13	2
12.2050.0.005	3-19	20	1	22.0028.0.000	3-13	18	2	22.1415.0.050	3-21	24	1
12.2050.0.007	3-29	3	1	22.0029.0.000	3-13	19	2	22.1422.0.000	3-21	25	1
12.2050.0.007	3-31	27	2	22.0030.0.000	3-13	20	1	22.1436.0.000	3-21	26	2
12.2060.0.006	3-29	4	2	22.0031.0.000	3-11	17	2	22.2410.0.000	3-11	24	1

# INDEX

PART NUMBER	PAGE	DET	QTY	PART NUMBER	PAGE	DET	QTY	PART NUMBER	PAGE	DET	QTY
22.2425.0.050	3-11	25	1	24.0141.1.000	3-27	12	1	24.4068.0.005	3-31	32	4
22.2440.0.000	3-11	26	2	24.0148.0.000	3-23	35	1	24.4109.0.000	3-29	6	1
22.2442.0.000	3-11	27	2	24.0154.0.000	3-25	19	1	24.4110.0.000	3-31	33	1
22.2631.0.000	3-9	18	1	24.0168.0.000	3-41	8	3	24.4111.1.000	3-31	34	1
22.3034.0.000	3-17	09	1	24.0174.0.000	3-41	9	1	24.4112.1.000	3-31	35	1
22.3068.0.000	3-17	10	4	24.0175.0.000	3-7	14	1	24.4113.0.000	3-31	36	1
22.3219.0.000	3-19	27	1	24.0176.0.000	3-7	15	1	24.4114.0.000	3-31	37	2
22.6002.0.000	3-23	30	1	24.0177.0.000	3-7	16	1	24.4115.0.000	3-31	38	1
23.2106.0.000	3-11	28	1	24.0178.0.000	3-9	21	1	24.4116.0.000	3-31	39	1
23.2107.0.000	3-11	29	1	24.0181.0.000	3-9	22	1	24.4117.0.000	3-31	40	1
24.0001.0.000	3-3	30	1	24.0182.0.000	3-9	23	1	24.4118.0.000	3-31	41	2
24.0002.0.000	3-3	31	1	24.0183.0.000	3-9	24	1	24.4119.0.000	3-31	42	1
24.0002.0.000	3-19	28	1	24.0184.0.000	3-9	25	1	24.4120.0.000	3-31	43	1
24.0009.0.000	3-21	27	1	24.0185.0.000	3-9	26	1	24.4121.0.000	3-31	44	1
24.0010.0.000	3-21	28	1	24.0186.0.000	3-9	27	1	24.4122.0.000	3-31	45	1
24.0011.0.000	3-21	29	1	24.0187.0.000	3-9	28	1	24.4123.1.000	3-31	46	1
24.0014.0.000	3-21	30	1	24.0188.0.000	3-11	31	1	24.4124.0.000	3-31	47	1
24.0016.0.000	3-21	31	1	24.0189.0.000	3-11	32	1	24.4126.0.000	3-31	48	1
24.0018.0.000	3-19	29	1	24.0190.0.000	3-11	33	1	24.4127.0.000	3-31	49	1
24.0019.0.000	3-19	30	1	24.0191.0.000	3-15	16	2	24.4129.0.000	3-33	21	1
24.0027.0.000	3-9	19	1	24.0192.0.000	3-19	33	1	24.4131.0.000	3-33	22	1
24.0027.0.000	3-19	31	1	24.0193.0.000	3-19	34	1	24.4132.0.000	3-33	23	1
24.0033.0.000	3-13	27	1	24.0408.0.000	3-7	17	1	24.4133.0.000	3-33	24	1
24.0037.0.000	3-21	32	1	24.0500.0.000	3-3	34	1	24.4135.0.000	3-33	25	1
24.0038.1.000	3-15	14	1	24.0510.0.000	3-3	35	1	24.4136.0.000	3-33	26	1
24.0039.1.000	3-21	33	1	24.0546.0.000	3-3	36	1	24.4137.0.000	3-33	27	1
24.0044.0.000	3-23	31	1	24.1000.0.000	3-19	35	1	24.4138.0.000	3-33	28	1
24.0048.0.000	3-3	32	1	24.1430.1.000	3-21	37	1	24.4140.0.000	3-35	13	1
24.0051.0.066	3-19	32	1	24.2400.0.000	3-19	36	1	24.4141.0.000	3-35	14	2
24.0055.0.000	3-13	28	1	24.3028.2.000	3-5	24	1	24.4142.0.000	3-35	15	1
24.0061.0.000	3-21	34	1	24.3055.6.000	3-17	11	1	24.4143.0.000	3-31	50	1
24.0061.2.000	3-9	20	1	24.3094.0.000	3-5	25	1	24.4145.0.000	3-35	16	1
24.0062.0.000	3-21	35	1	24.3095.0.000	3-5	26	1	24.4146.0.000	3-33	29	1
24.0063.0.000	3-21	36	1	24.3096.0.000	3-5	27	1	24.4147.0.000	3-33	30	1
24.0066.0.000	3-11	30	2	24.3097.0.000	3-5	28	1	24.6000.2.000	3-23	36	1
24.0067.0.000	3-25	16	1	24.3098.0.000	3-5	29	1	24.6001.4.000	3-25	22	1
24.0068.0.000	3-25	17	1	24.3099.0.000	3-17	12	2	24.6003.0.000	3-25	23	1
24.0093.3.004	3-7	13	1	24.3100.0.000	3-17	13	2	24.6004.2.001	3-25	24	1
24.0100.0.000	3-3	33	1	24.3102.0.000	3-25	20	1	24.6005.2.000	3-15	17	1
24.0106.1.000	3-23	32	1	24.3103.0.000	3-25	21	1	24.6100.5.000	3-17	14	1
24.0108.0.000	3-23	33	1	24.4001.0.050	3-37	9	1	68.0358.0.800	3-41	10	1
24.0111.1.000	3-15	15	1	24.4002.0.000	3-37	10	1				
24.0112.0.000	3-25	18	1	24.4003.0.000	3-37	11	1				
24.0119.0.050	3-23	34	1	24.4004.0.000	3-37	12	1				
24.0139.1.000	3-27	11	1	24.4010.0.000	3-31	31	1				