



**MODEL S-311+I**

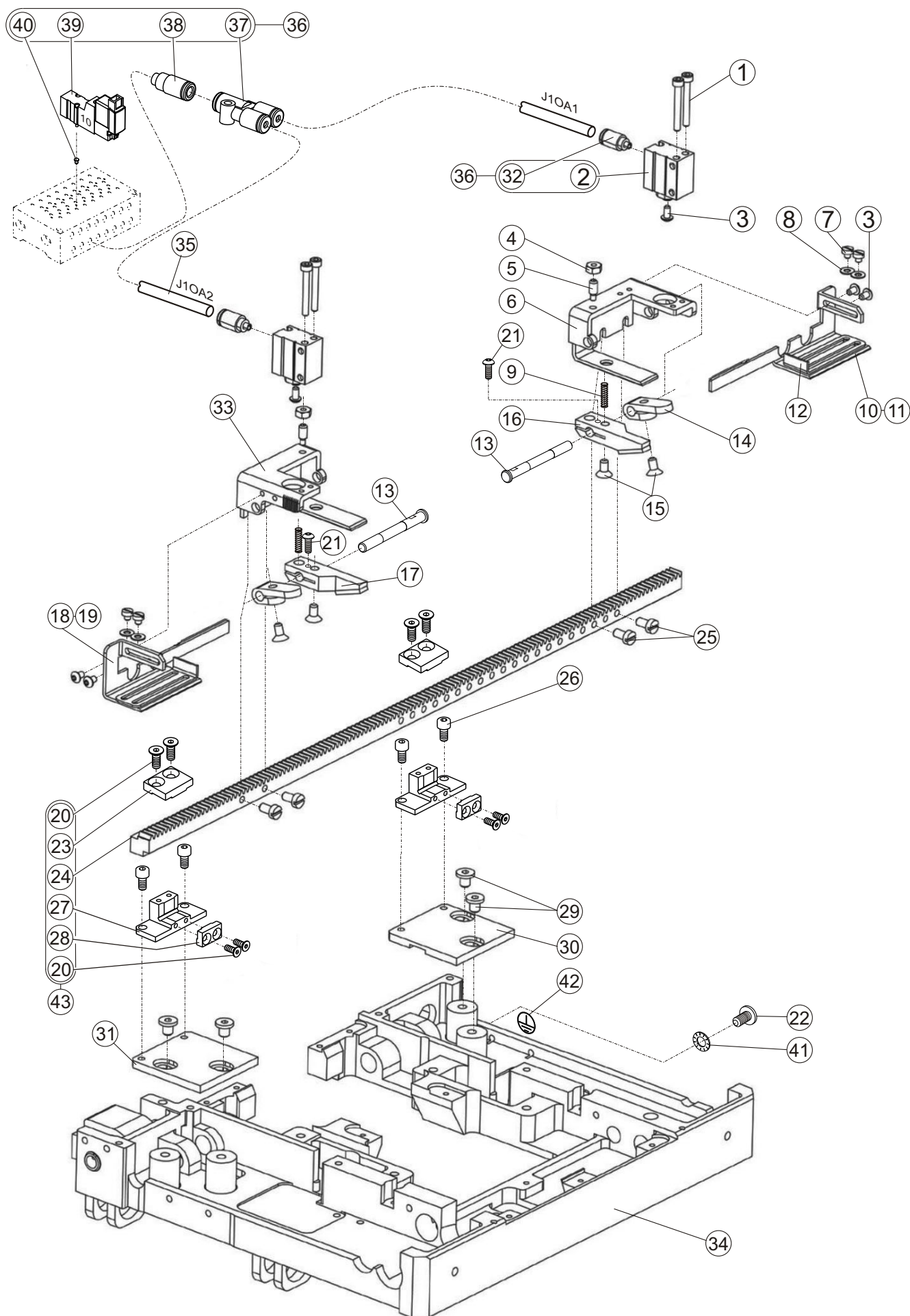
**ELECTRONIC EYELET BUTTONHOLE  
MACHINE**

**INDEXER PARTS**

**MACHINE SERIAL No:**

**PART NUMBER 97.1930.0.002**

## BASE AND CLAMP

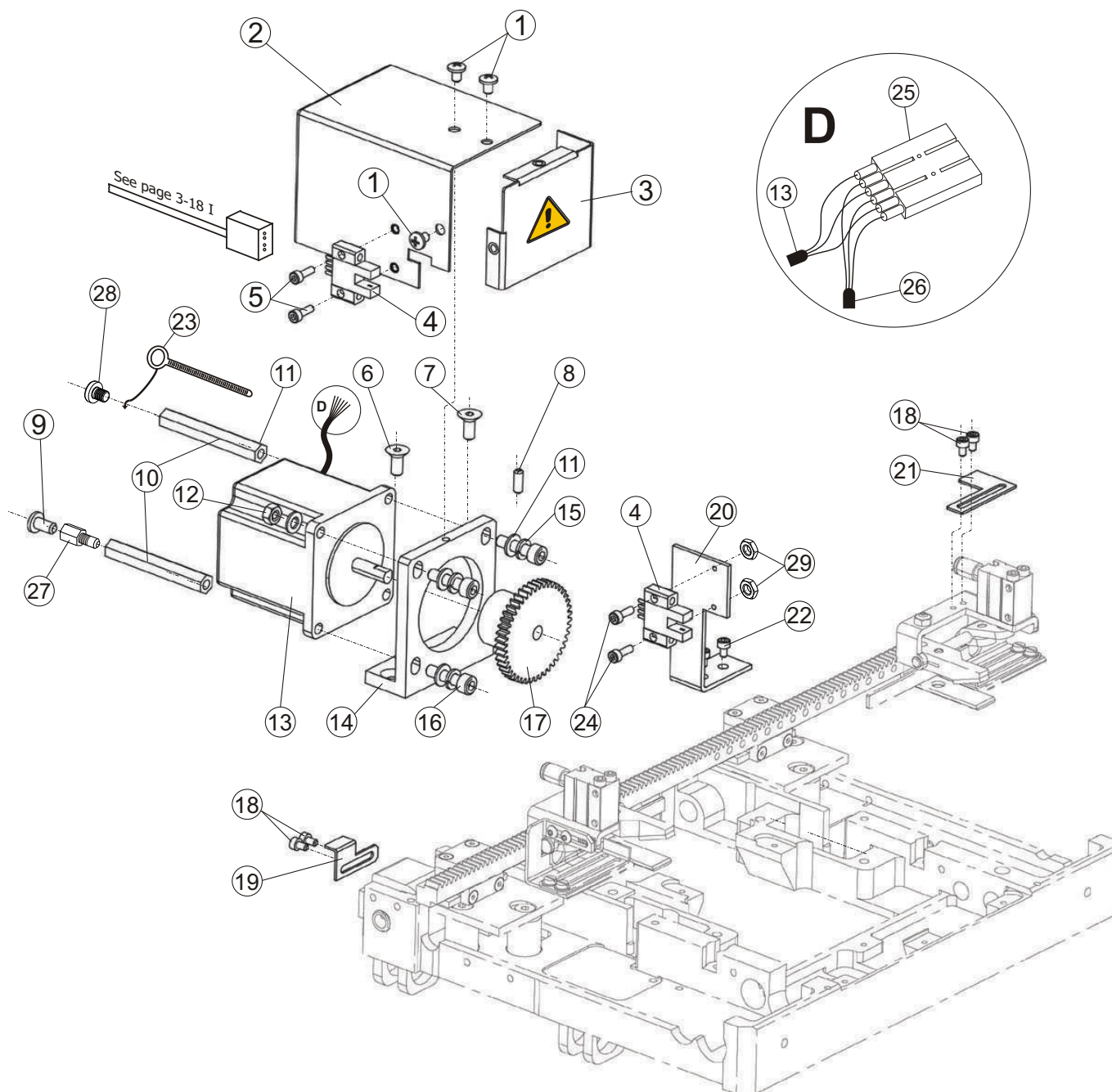


## BASE AND CLAMP

DET	PART NUMBER	DESCRIPTION	QTY.
01	08.6000.3.025	Screw	4
02	12.0008.3.729	Cylinder	2
03	08.6200.3.005	Screw	6
04	08.6700.4.000	Nut	2
05	19.0011.2.403	Spring Screw	2
06	19.0005.0.022	Cylinder Bracket Right	1
07	08.6012.3.003	Screw	4
08	08.6852.3.000	Washer	4
09	17.0026.1.084	Spring	2
10	19.0082.6.450	Front Gauge-Right(Jacket)	1
11	19.0082.6.442	Front Gauge-Right(Jeans)	1
12	19.0082.6.448	Gauge	2
13	19.0032.0.403	Stud	2
14	19.0064.6.508	Lever	2
15	08.6100.4.008	Screw	4
16	19.0064.6.506	Clamp Foot Right	1
17	19.0064.6.507	Clamp Foot Left	1
18	19.0082.6.451	Front Gauge-Left(Jacket)	1
19	19.0008.6.443	Front Gauge-Left(Jeans)	1
20	08.6100.3.008	Screw	(8)
21	08.6200.3.008	Screw	2
22	08.6032.4.008	Screw	1
23	19.0064.6.514	Carriage Cover-Upper	(2)
24	19.0064.7.429	Clamp Rack	(1)
25	08.6010.4.008	Screw	4
26	08.6000.4.008	Screw	4
27	19.0064.6.511	Carriage Base	(2)
28	19.0064.6.516	Carriage Cover-Lower	(2)
29	08.6050.5.006	Screw	4
30	19.0082.6.445	Left Bracket	1
31	19.0082.6.446	Right Bracket	1
32	12.0008.3.761	Connector	(2)
33	19.0005.0.021	Cylinder Bracket Left	1
34	19.0071.4.208	Bedplate	1
35	19.0094.2.422	Air Tubing	1
36	12.0008.3.548	Pneumatics Kit	1
37	12.0008.3.750	Connector	(1)
38	84.0004.6.847	Connector	(1)
39	12.0008.3.780	Valve	(1)
40	12.0008.3.781	Plug	(1)
41	08.6832.4.000	M4 Washer	1
42	12.0008.4.052	Label "Ground"	1
43	19.0002.9.009	Carriage Assy	1

\* — Extra Part

# POWER

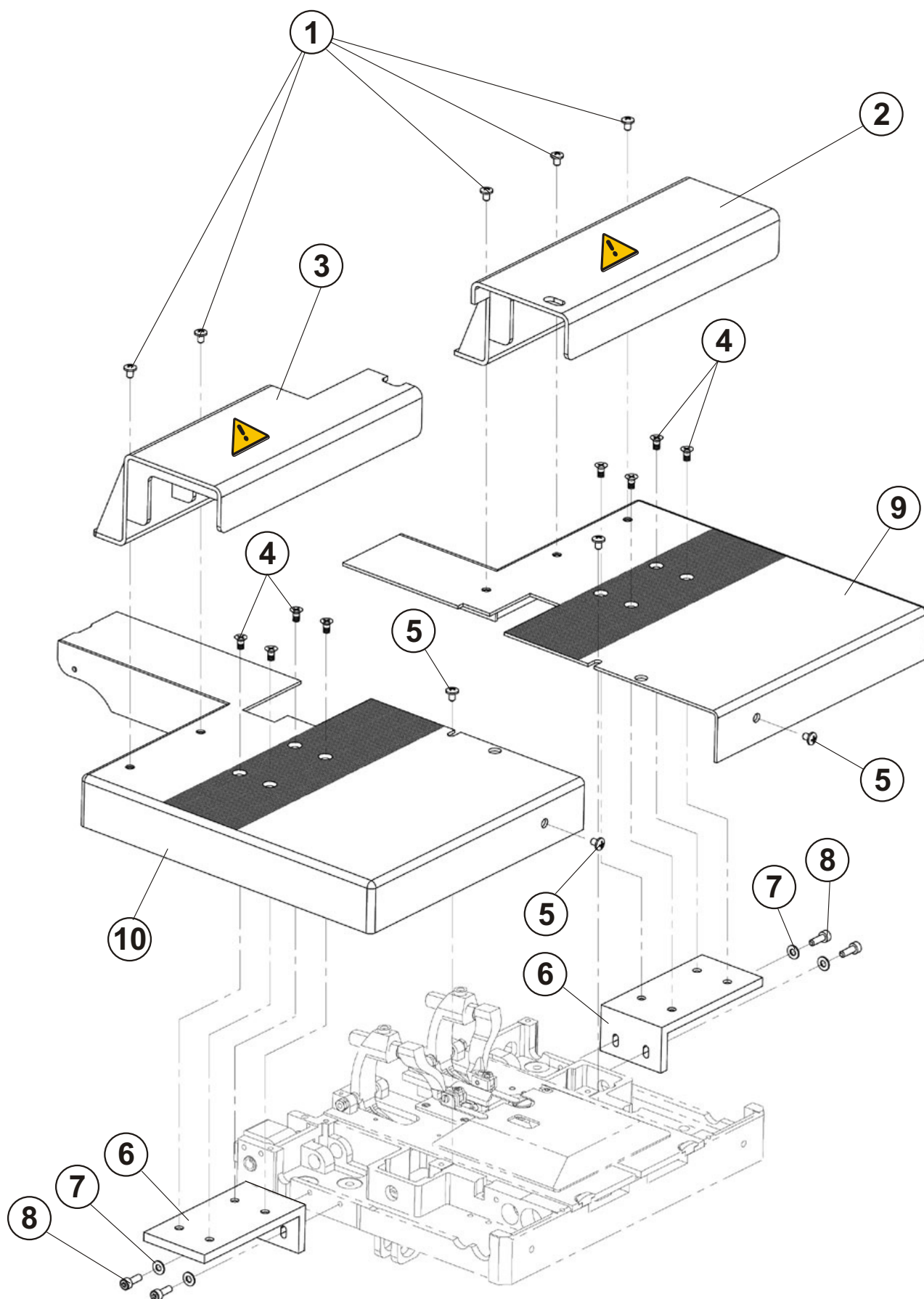


# POWER

DET	PART NUMBER	DESCRIPTION	QTY.
01	08.6522.4.006	Screw	3
02	19.0005.0.027	Motor Cover	1
03	19.0005.0.019	Front Motor Cover	1
04	12.0010.4.038	Senzor	2
05	08.6000.3.010	Screw	2
06	08.6100.5.012	Screw	1
07	08.6100.5.010	Screw	1
08	08.6400.6.010	Screw	1
09	08.6032.5.006	Screw	1
10	12.0010.4.011	Spacer	2
11	08.6850.5.000	Washer	4
12	08.6700.5.000	Nut	1
13	06.1900.0.003	Motor	1
14	19.0074.0.000	Motor Holder	1
15	08.6800.5.000	LockWasher	3
16	08.6000.5.020	Screw	3
17	19.0055.4.432	Gear	1
18	08.6200.3.005	Screw	4
19	19.0081.5.413	Senzor Plate-Left	1
20	19.0082.3.462	Senzor Bracket-Right	1
21	19.0081.5.474	Senzor Plate-Right	1
22	08.6000.4.008	Screw	2
23	12.0010.4.013	Cable Binder	1
24	08.6000.3.012	Screw	2
25	12.0010.4.085	Terminal	1
26		See page 3-19 I	1
27	12.0010.4.075	Screw	1
28	08.6032.5.010	Screw	1
29	08.6710.3.000	Nut	2

\* — Extra Part

## COVERS



# COVERS

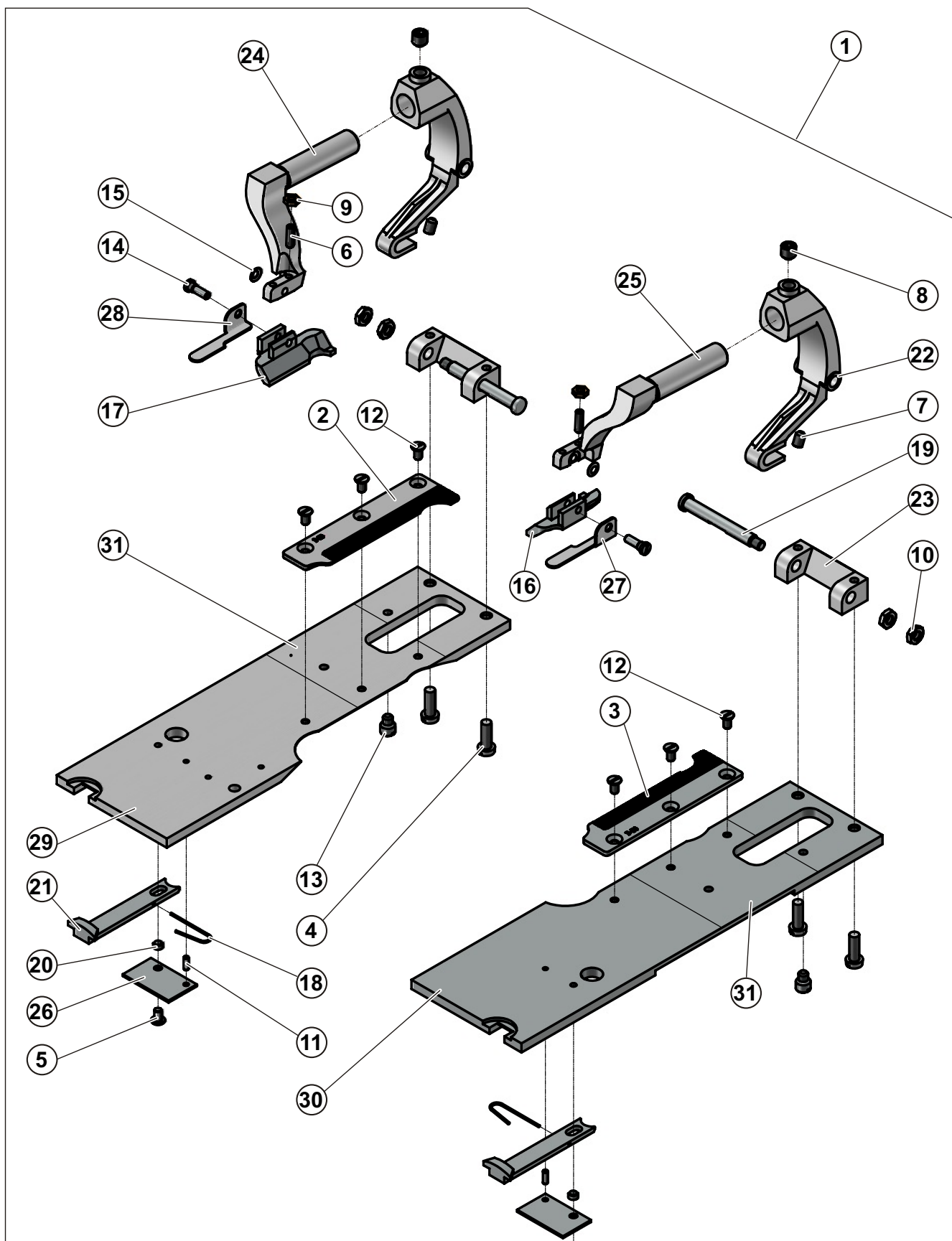
DET	PART NUMBER	DESCRIPTION	QTY.
01	08.6032.4.008	Screw	5
02	19.0095.4.402	Plastic Guard Cover-Right	1
03	19.0095.4.401	Plastic Guard Cover-Left	1
04	08.6132.4.010	Screw	8
05	08.6522.4.006	Screw	4
06	19.0074.4.541	Cover Support	2
07	08.6850.4.000	Washer	4
08	08.6000.4.012	Screw	4
09	19.0005.0.024	Plate Right	1
10	19.0005.0.023	Plate Left	1

\*

— Extra Part



## CLAMPING - AF+I

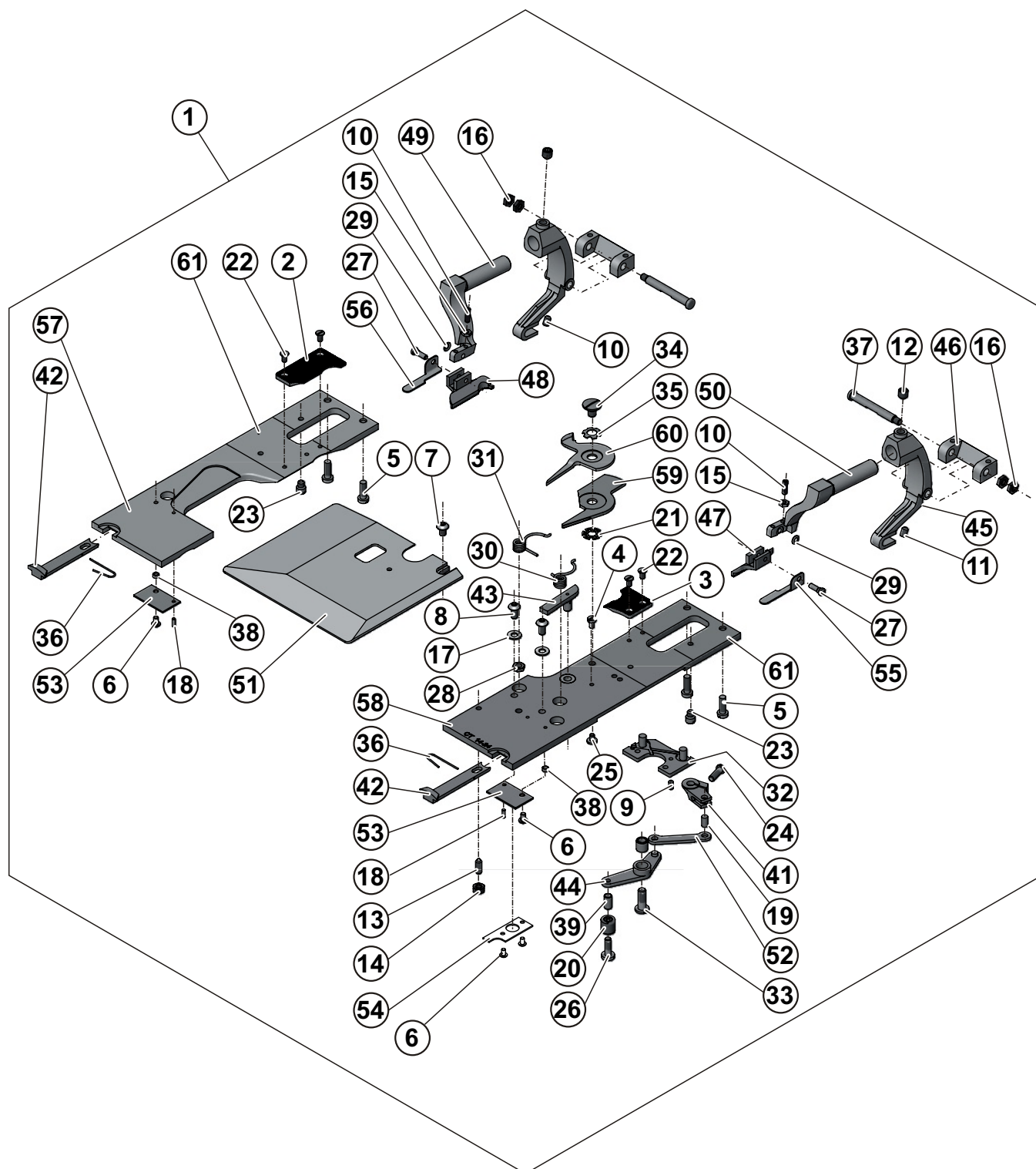




## CLAMPING - AF+I

DET	PART NUMBER	DESCRIPTION			QTY.
01	19.0003.1.601	Clamps AF+I			1
02	03.7050.1.001	Clamp Mat L.H.			1
03	03.7050.1.002	Clamp Mat R.H.			1
04	08.6010.4.012	Screw			4
05	08.6200.3.005	Screw			2
06	08.6400.3.010	Screw			2
07	08.6400.4.006	Screw			2
08	08.6400.6.006	Screw			2
09	08.6710.3.000	Nut			2
10	08.6710.4.000	Nut			4
11	12.1010.0.206	Pin			2
12	15.1436.0.100	Screw			6
13	15.2023.0.300	Screw			2
14	17.0013.5.067	Screw			2
15	17.0019.2.066	Washer			2
16	18.0066.7.410	Clamp Foot Right			1
17	18.0066.7.411	Clamp Foot Left			1
18	19.0027.1.610	Spring			2
19	19.0032.8.401	Shaft			2
20	19.0041.0.684	Ring Insert			2
21	19.0062.5.408	Pawl			2
22	19.0063.5.418	Base Clamp Rde			2
23	19.0064.7.402	Block			2
24	19.0066.8.405	Arm Clamp L.H.			1
25	19.0066.8.406	Arm Clamp R.H.			1
26	19.0081.5.449	Cover Plate			2
27h	19.0081.5.472	Holder Cloth - Right			1
28	19.0081.5.473	Holder Cloth - Left			1
29	19.0081.6.433	Plate Left - AF		●	1
30	19.0081.6.440	Plate Right - AF		●	1
31	12.0008.6.981	Teflon Tape			2

# CLAMPING - CT+I

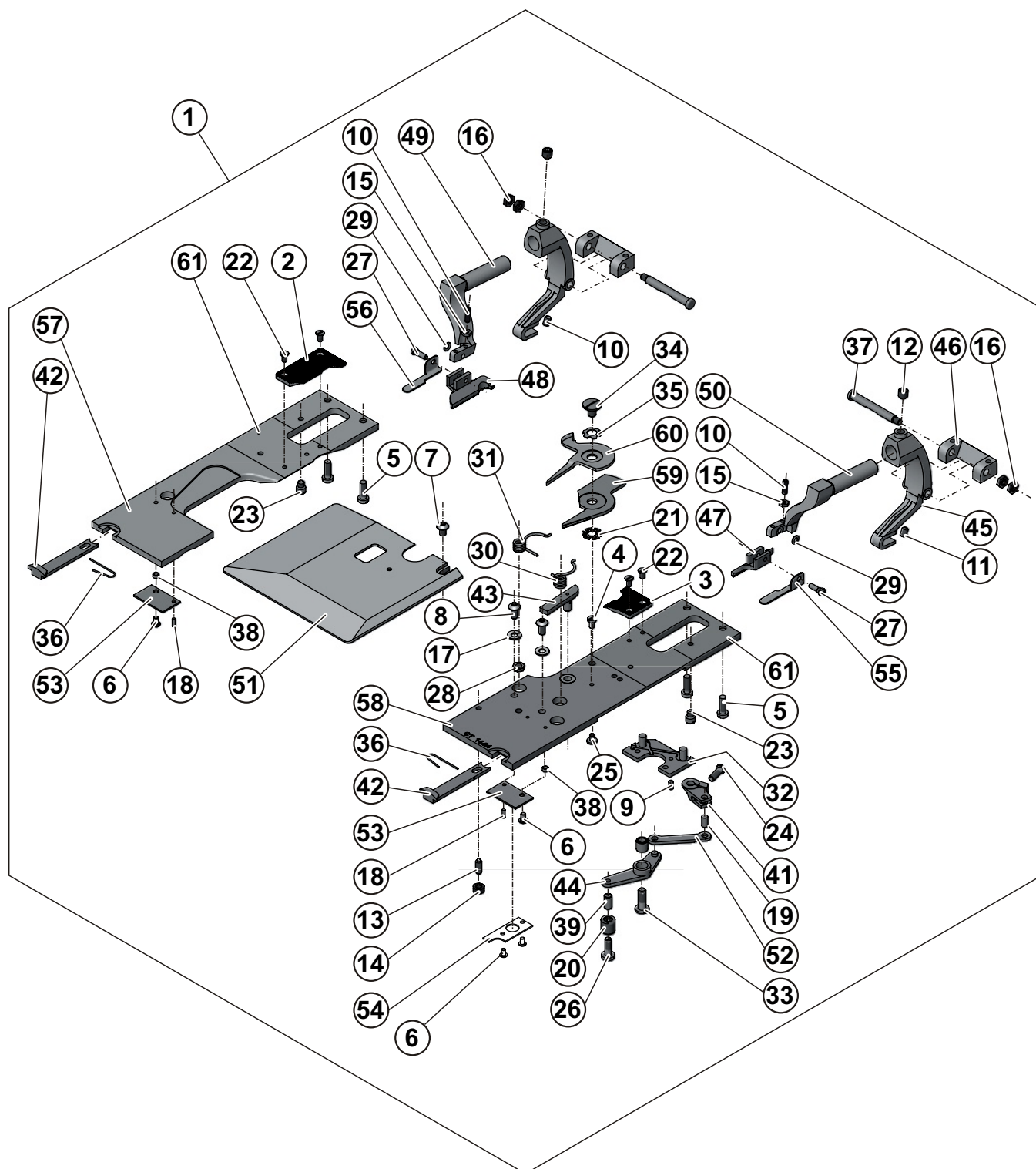


## CLAMPING - CT+I

DET	PART NUMBER	DESCRIPTION	QTY.
01	19.0003.1.693	Modification (14 - 24)	1
	19.0003.1.694	Modification (22 - 32)	
02	See Table Below	Clamp Mat Left	
03	See Table Below	Clamp Mat Right	
04	08.6010.3.005	Screw M3-5	1
05	08.6010.4.012	Screw M4-12	4
06	See Table Below	Screw M3-5	
07	08.6200.4.006	Screw M4-6	1
08	08.6200.4.008	Screw M4-8	2
09	08.6400.3.006	Screw M3-6	1
10	08.6400.3.010	Screw M3-10	2
11	08.6400.4.006	Screw M4-6	2
12	08.6400.6.006	Screw M6-6	2
13	08.6490.4.009	Plunger M4-9	1
14	08.6700.4.000	Nut M4	1
15	08.6710.3.000	Nut M3	2
16	08.6710.4.000	Nut M4	4
17	08.6850.4.000	Washer M4	2
18	See Table Below	Pin	
19	12.1010.0.408	Pin	1
20	12.2050.1.005	Bearing	1
21	12.3013.0.002	Washer-Spring	1
22	15.1436.0.100	Screw	4
23	15.2023.0.300	Screw	2
24	17.0012.0.543	Screw M4-12	1
25	17.0012.0.605	Screw	1
26	17.0012.1.142	Screw	1
27	17.0013.5.067	Screw	2
28	17.0016.1.054	Nut	1
29	17.0019.2.066	Washer	2
30	17.0026.4.064	Spring	1
31	17.0026.4.065	Spring - Torsion	1
32	19.0005.2.220	Actuator Assembly	1
33	19.0012.1.404	Screw	1
34	19.0013.1.498	Pivot Screw	1
35	19.0019.6.402	Washer	1
36	19.0027.1.610	Spring	2
37	19.0032.8.401	Shaft	2
38	19.0041.0.684	Ring Insert	2
39	19.0041.1.400	Bushing	1
40	19.0044.1.626	Bushing	1
41	19.0061.3.605	Lever	1
42	19.0062.5.408	Pawl	2
43	19.0062.5.415	Actuator	1
44	See Table Below	Trimming Lever	
45	19.0063.5.418	Base Clamp	2
46	19.0064.7.402	Block	2



# CLAMPING - CT+I



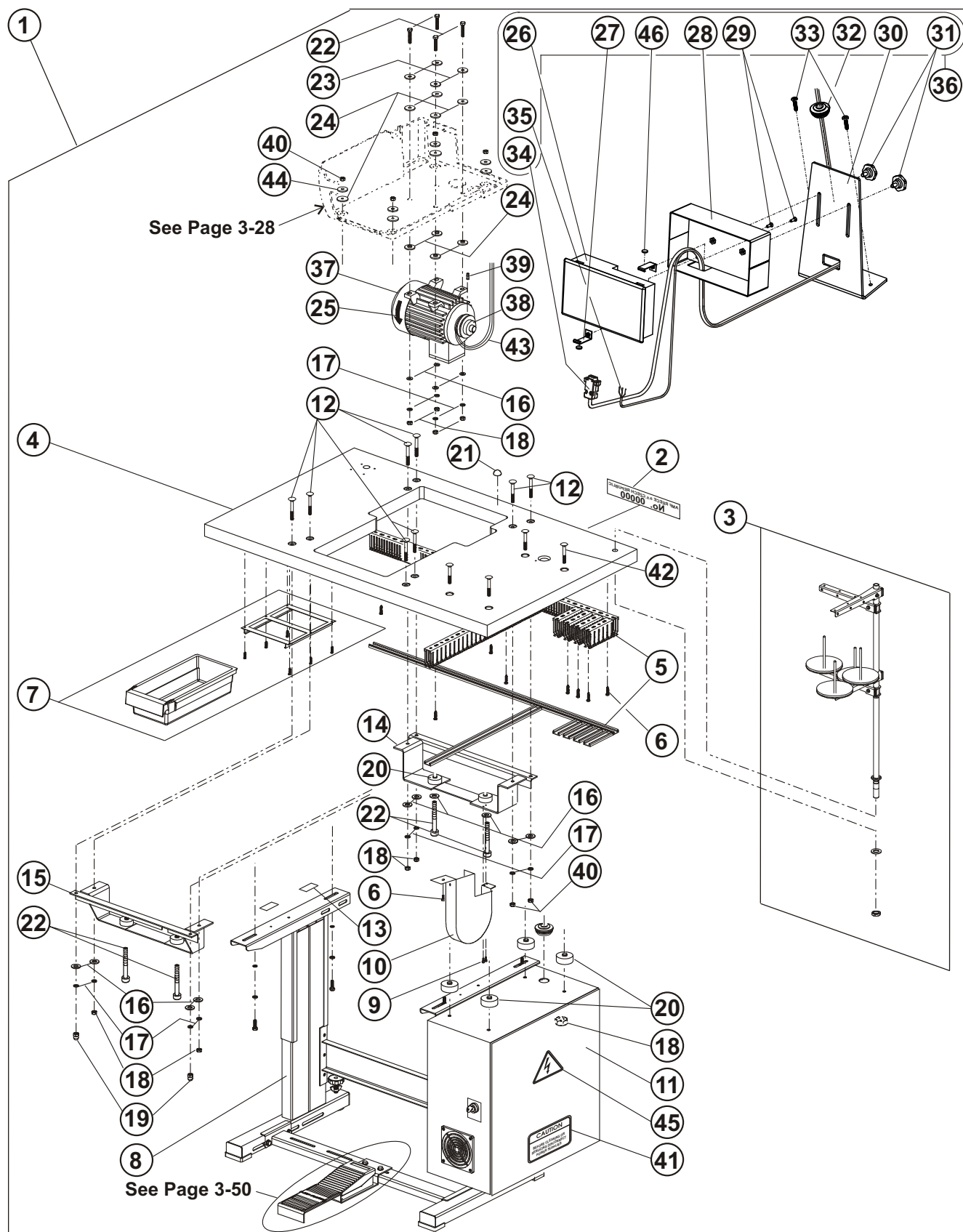
## CLAMPING - CT+I



DET	PART NUMBER	DESCRIPTION	QTY.
47	See Table Below	Clamp Foot Right	
47	See Table Below	Clamp Foot Right	
48	See Table Below	Clamp Foot Left	
48	See Table Below	Clamp Foot Left	
49	19.0066.8.405	Arm Clamp Left	1
50	19.0066.8.406	Arm clamp Right	1
51	19.0074.6.221	Cover Plate	1
52	See Table Below	Lever	
53	See Table Below	Cover Plate	
54	See Table Below	Cover Plate	
55	19.0081.5.472	Holder Cloth Right	1
56	19.0081.5.473	Holder Cloth - Left	1
57	19.0081.6.447	Plate Left	1
58	See Table Below	Plate Right	
59	19.0087.0.446	Lower Shear-Cord Trim	1
60	19.0087.0.447	Upper Shear	1
61	12.0008.6.981	Teflon Tape	2

MODIFICATION KIT — BUTTONHOLE LENGTH					
DET	19.0003.1.693		19.0003.1.694		APPLICATION
	14—24		22—32		
	PART NUMBER	QTY.	PART NUMBER	QTY.	
2	03.7050.0.021	1	03.7050.0.023	1	
3	03.7050.0.022	1	03.7050.0.024	1	
6	08.6200.3.005	2	08.6200.3.005	3	
18	12.1010.0.206	2	12.1010.0.206	1	
44	19.0063.3.408	1	19.0063.3.407	1	
47	19.0066.7.412	1	19.0066.7.426	1	JEANS
47	18.0066.7.410	1	19.0066.7.420	1	JACKET
48	19.0066.7.413	1	19.0066.7.427	1	JEANS
48	18.0066.7.411	1	19.0066.7.421	1	JACKET
52	19.0081.0.514	1	19.0081.0.512	1	
53	19.0081.5.449	2	19.0081.5.449	1	
54	-	-	19.0081.5.441	1	
58	19.0081.6.483	1	19.0081.6.487	1	

# TABLE

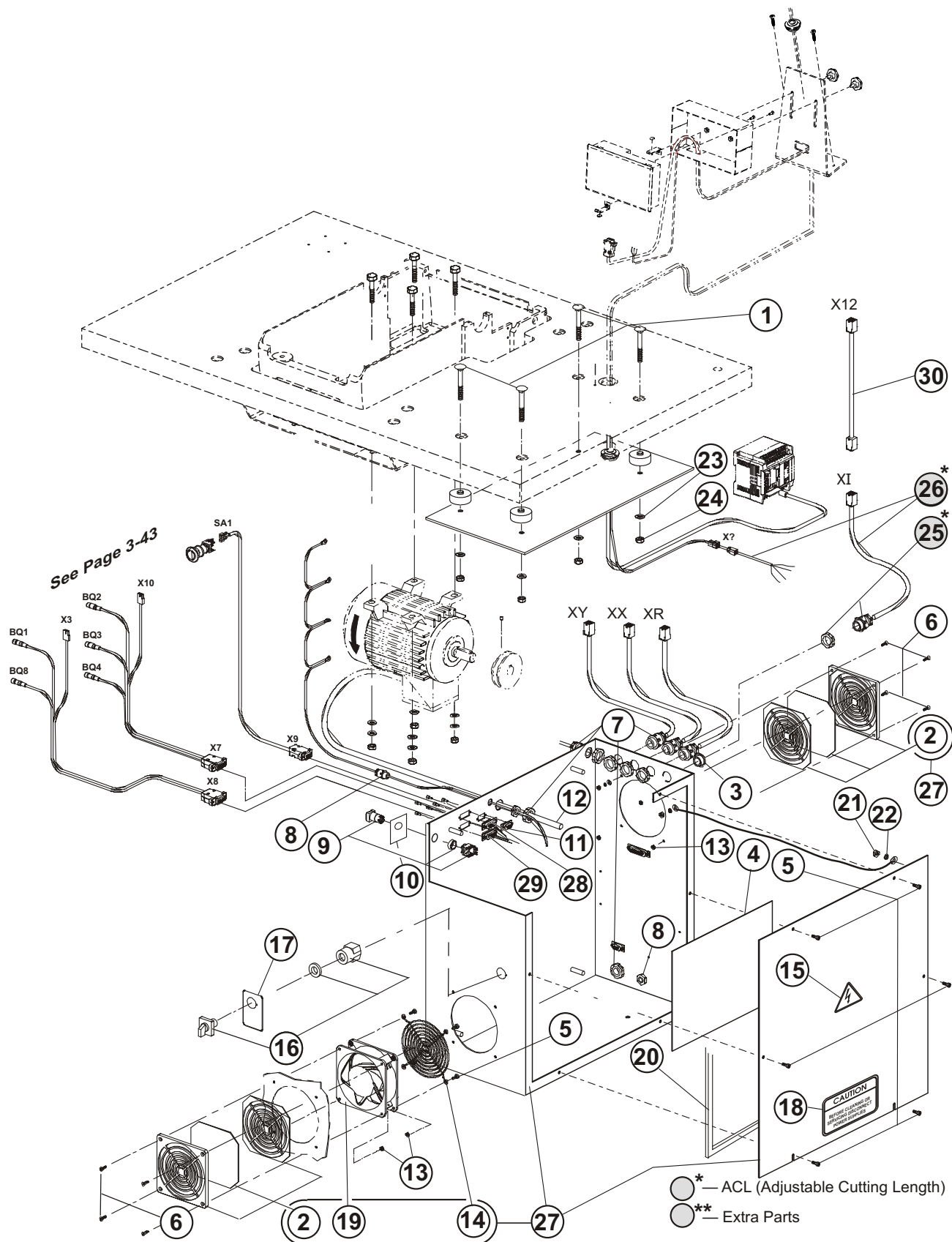


# TABLE

DET	PART NUMBER	DESCRIPTION	QTY.
01	03.5519.1.091	Table Assembly	1
02	04.1416.0.003	Label "No. xxxxx" ●●●	1
03	17.0003.6.156	Thread Stand Assembly	1
04	19.0091.0.402	Table Top ●●●	1
05	19.0095.2.403	Latch for Cable Kit ●●●	1
06	08.6632.3.016	Screw	15
07	12.0008.6.901	Drawer Kit ●●●	1
08	04.9000.2.123	Frame Kit	1
09	08.6000.4.008	Screw	2
10	19.0005.0.028	Cover Pulley ●●●	1
11	19.0006.9.448	Electrical Box Assembly α	1
12	08.6532.8.050	Screw	8
13	17.0094.0.200	Washer	4
14	19.0005.0.016	Framework	1
15	19.0005.0.015	Framework	1
16	08.6852.8.000	Washer	12
17	08.6802.8.000	Spring Washer	12
18	08.6702.8.000	Nut	14
19	08.6722.8.000	Nut	2
20	19.0095.1.405	Rubber Washer	8
21	12.0008.6.915	Holder	1
22	08.6312.8.040	Screw	8
23	01.4750.0.000	Washer	4
24	17.0095.1.272	Rubber Washer	12
25	17.0097.5.182	Label	1
26	19.8001.0.009	Display	(1)
27	19.0005.0.032	Panel Holder	(2)
28	19.0005.0.031	Display Box	(1)
29	08.6100.4.012	Screw	(1)
30	19.0083.4.036	Display Box Holder	(1)
31	19.0014.7.003	Screw	(2)
32	12.0008.4.366	Bushing	(1)
33	08.6663.5.025	Screw	(2)
34	19.0007.9.045	Cable RS 232	(1)
35	19.0007.9.046	Cable Display Power	(1)
36	03.5519.3.003	Touch Screen Assembly	1
37	12.0008.4.757	Motor	1
38	19.0052.0.501	Puley	1
39	08.6400.6.006	Screw M6x6	1
40	08.6733.8.000	M8 Nut Lock	4
41	00.2751.3.602	Label	1
42	08.6532.8.070	Screw	4
43	12.5050.1.501	Belt	1
44	17.0019.0.441	Washer	4
45	17.0097.5.174	Label	1
46	24.4049.0.000	Washer	(2)



## ELECTRONIC BOX - ELECTRONIC PARTS - I



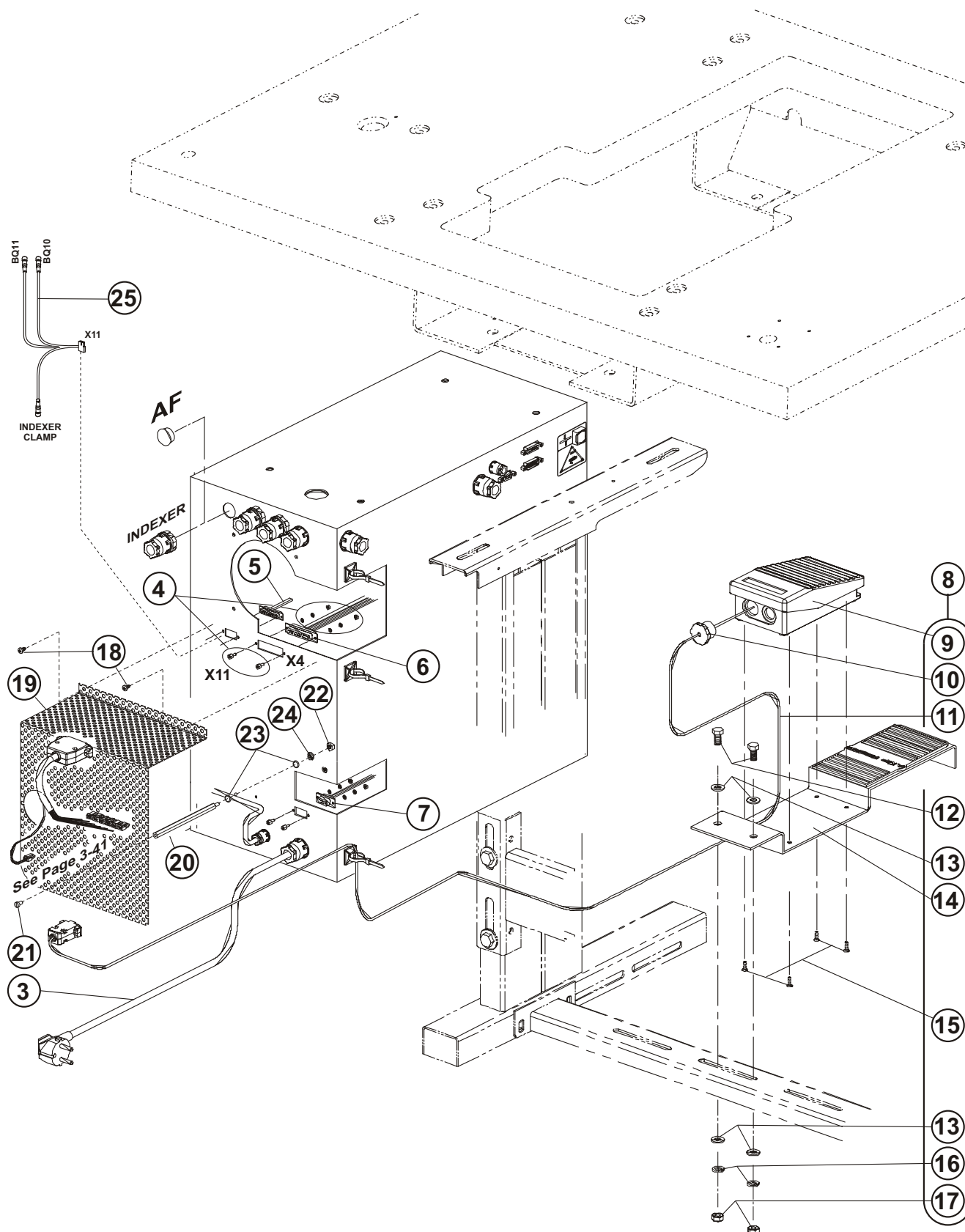
## ELECTRONIC BOX - ELECTRONIC PARTS - I

DET	PART NUMBER	DESCRIPTION	QTY.
01	08.6532.8.070	Screw	4
02	12.0008.4.761	Fan Cover With Filter ●●●	(2)
03	12.0008.4.777	Stopper ●●●	1
04	12.8000.0.077	Electrical Diagram Label	1
05	08.6032.4.012	Screw	14
06	08.6032.4.016	Screw	4
07	12.0008.4.231	Bushing ●●●	6
08	12.0008.4.207	Bushing ●●●	2
09	12.0008.4.613	Pushbutton (Green)	1
10	12.0008.4.615	Switch Unit (ZB6-E2B)	(1)
11	19.0007.9.023	Cable X9A	1
12	19.0007.9.008	Sew Motor	1
13	08.6702.4.000	Nut	12
14	12.0008.4.691	Fan Rack	(1)
15	12.0008.4.378	Label	1
16	12.0008.4.835	Knob	1
17	12.8000.0.423	Label	1
18	00.2751.3.602	Label "CAUTION"	1
19	12.0008.4.682	Fan	(1)
20	19.0094.2.410	Gasket	1
21	08.6702.6.000	Nut	2
22	08.6832.6.000	Washer	2
23	08.6852.8.000	Washer	4
24	08.6702.8.000	Nut	4
25*	12.0008.4.231	Bushing ●●●	1*
26*	19.0007.9.011	Cable Motor	1*
27	19.0005.0.014	Driving Box	1
28	19.0007.9.021	Cable X7A	1
29	19.0007.9.022	Cable X8A	1
30	19.0007.9.041	Junction Cable	1

\* — ACL (Adjustable Cutting Length)

\* — Extra Part

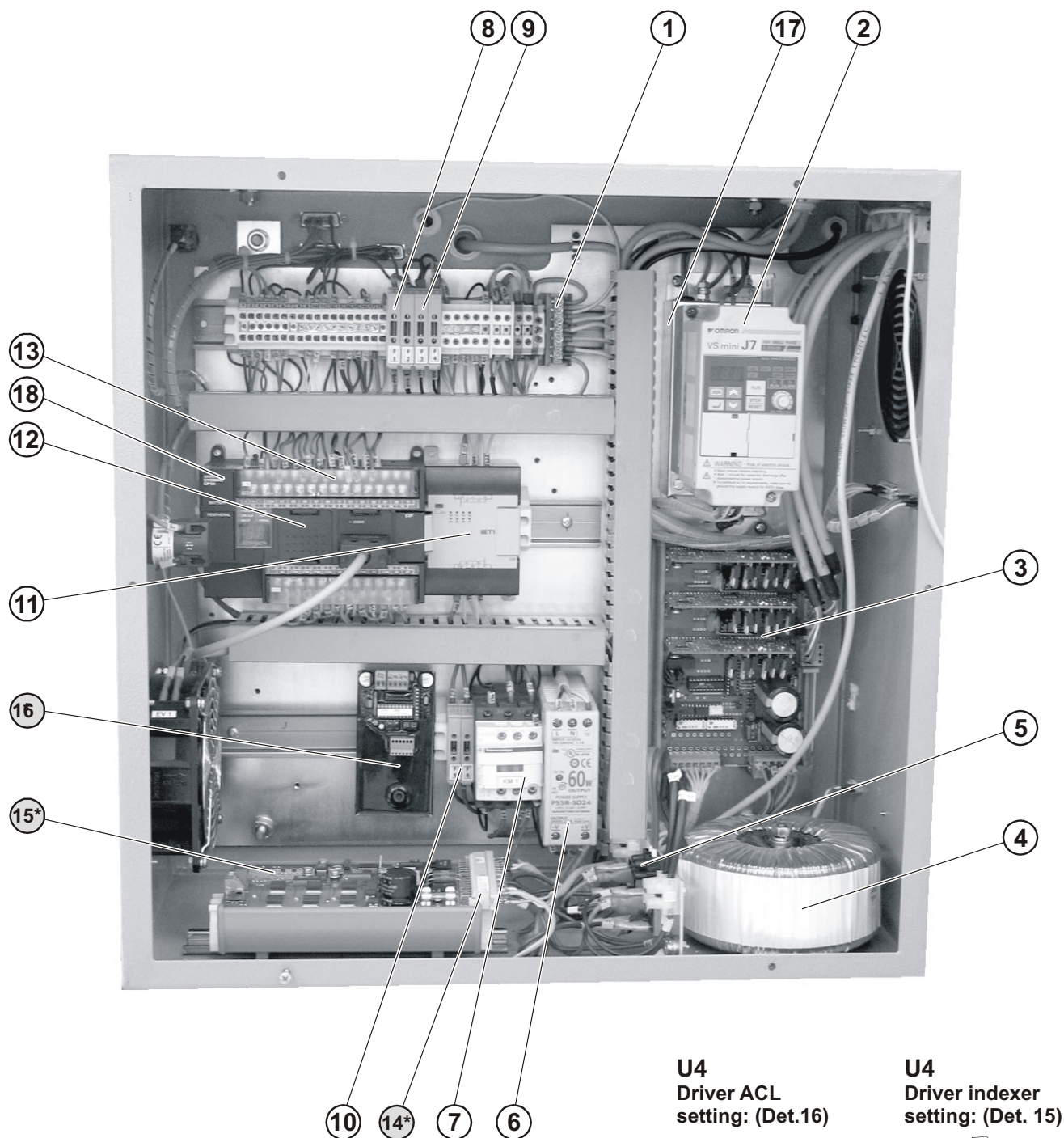
## ELECTRONIC BOX - ELECTRONIC PARTS - II



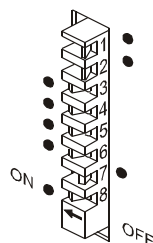
# **ELECTRONIC BOX - ELECTRONIC PARTS - II**

DET	PART NUMBER	DESCRIPTION	QTY.
03	12.0008.4.885	Cable Flexo	1
04	12.0008.4.710	Screw Kit	5
05	19.0007.9.028	Cable X11A	1
06	19.0007.9.018	Cable X4A	1
07	19.0007.9.019	Cable X5A	1
08	19.0007.9.037	Pedal Assembly	1
09	06.8800.0.001	Pedal ●●●	(1)
10	12.0008.4.296	Bushing ●●●	(1)
11	19.0007.9.036	Cable	(1)
12	08.6312.8.020	Screw	(2)
13	08.6852.8.000	Washer	(4)
14	24.0097.0.000	Holder Pedal	(1)
15	08.6100.4.012	Screw	(4)
16	08.6802.8.000	Spring Washer	(2)
17	08.6702.8.020	Screw	(2)
18	08.6662.4.010	Screw	2
19	19.0083.1.688	Cover	1
20	19.0014.6.412	Distance Nut	1
21	08.6010.4.008	Screw	2
22	08.6702.4.000	Nut	1
23	08.6852.4.000	Washer	2
24	08.6832.4.000	Washer Serated	1
25	19.0007.9.029	Cable X11	1

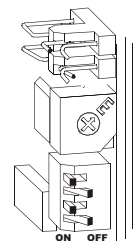
## ELECTRONIC BOX - ELECTRONIC PARTS - III



**U4**  
Driver ACL  
setting: (Det.16)



**U4**  
Driver indexer  
setting: (Det. 15)



\* Only indexer

\*\* Only ACL

**ELECTRONIC BOX - ELECTRONIC PARTS - III**

DET	PART NUMBER	DESCRIPTION	QTY.
01	12.0008.4.050	Bridge GND	1
02	19.8001.0.008	Inverter U5	1
03	12.0010.4.080	Drivers U1, U2, U3 MD-921-1	1
04	12.0008.4.756	Trafo GS3	1
05	12.0008.4.770	Rectifier	2
06	12.0010.4.168	Power 24V GS1	1
07	12.0008.4.833	Contactor 24V	1
08	12.0008.4.665	Fuse F1, F2, T2A	1
09	12.0008.4.664	Fuse F3, F4 T10A	1
10	12.0008.4.664	Fuse F5, F6 T10A	1
11	12.0010.4.071	Ext. Block 8ET1	1
12	19.8001.0.007	PLC CP1H Omron	1
13	12.0010.4.067	Port RS232	1
14	06.1900.0.007	Connector U4 Assembly	1
15	12.0008.4.754	Driver U4 Indexer	1
16	12.0008.4.898	Driver U4 ACL	1
17	12.0010.4.078	Filter	1
18	12.0010.4.163	Battery PLC Omron	1

*	only indexer
---	--------------

\* only ACL

