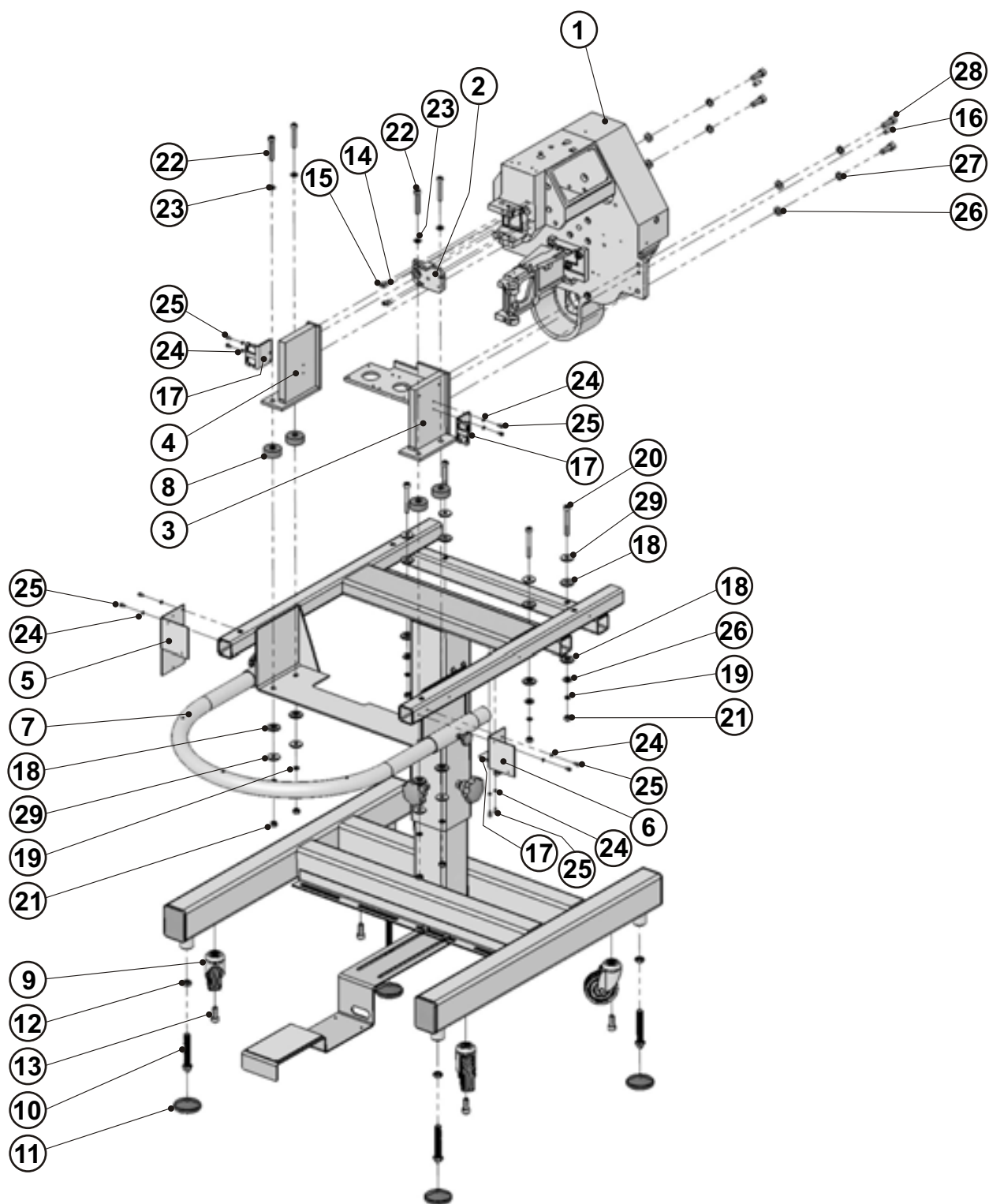


TABLE OF CONTENTS

FRAME ASSEMBLY	3-2
NEEDLE BAR LIFTER	3-4
THREADER, NEEDLE COVER.....	3-6
UPPER AND LOWER LOOPER.....	3-10
THREAD TENSION.....	3-12
BUTTON CHUCK JAW.....	3-14
NEEDLE BAR MECHANISM LOWER AND UPPER.....	3-16
NEEDLE BAR ASSEMBLY	3-18
GEAR TRAIN AND MOTOR ASSEMBLY	3-20
ADJUSTABLE LIFT TONGUE	3-24
RETAINER ASSEMBLY.....	3-26
NEEDLE BAR MECHANISM LOWER AND UPPER.....	3-28
BUTON CHUCK MECHANISM	3-30
"V" ASSEMBLY.....	3-32
FIVE THREADS SYSTEM.....	3-34
LOCK ASSMEBLY	3-36
THREAD TENSION UPPER ASSEMBLY.....	3-38
LUBRICATION BOX ASSEMBLY	3-40
TABLE MECHANISM	3-42
AIR THREADING	3-44
LIGHT ASSEMBLY	3-46
COVERS AND GUARDS ASSEMBLY.....	3-48
COVERS HEAD ASSEMBLY	3-50
STAND THREAD.....	3-52
PANEL KIT GOT 1000.....	3-54
ELECTROBOX	3-56
KIT PNEU	3-58
STANDARD ACCESSORIES - TOOLS.....	3-60
STANDARD ACCESSORIES	3-62
STANDARD ACCESSORIES - OVERVIEW.....	3-64

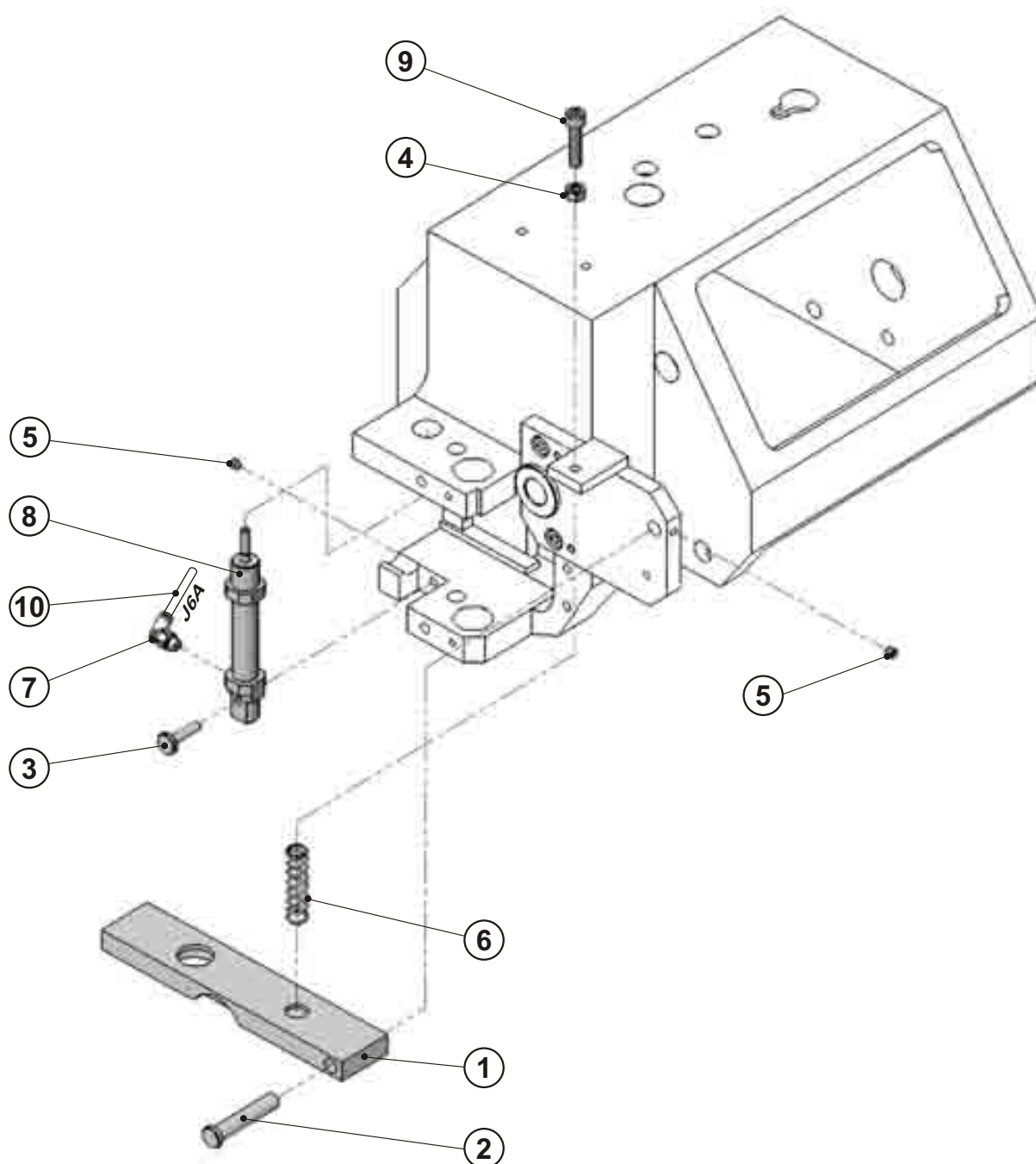
FRAME ASSEMBLY



FRAME ASSEMBLY

DET	PART NUMBER	DESCRIPTION	QTY.
01	71.6132.1.017	ARM ASSEMBLY	1
02	71.1253.8.027	UPPER LOOPER SUPPORT	1
03	71.1223.6.100	MOUNTING BRACKET MACHINE - RIGHT	1
04	71.1223.6.101	MOUNTING BRACKET MACHINE - LEFT	1
05	71.1565.3.031	HOLDER	1
06	71.1565.3.032	HOLDER	1
07	04.9071.0.000	STAND	1
08	17.0095.1.273	SHOCK MOUNT	4
09	12.0008.6.520	ROLLER LRA-TPA 75K-FK	4
10	12.0008.6.523	SCREW M12x100	4
11	12.0008.6.524	BASE PLATE	4
12	08.6712.9.000	NUT M12	4
13	08.6000.0.025	SCREW M10-25	4
14	12.1010.0.004	PIN 4m6x16	2
15	08.6000.5.012	SCREW M5-12	2
16	12.1010.0.820	PIN 8-20	2
17	19.0082.3.433	HOLDER	3
18	17.0095.1.272	SHOCK MOUNT	12
19	08.6800.8.000	SPRING WASHER M8	8
20	08.6000.8.065	SCREW M8-65	4
21	08.6702.8.000	NUT M8	8
22	08.6000.8.050	SCREW M8-50	4
23	08.6852.8.000	WASHER M8	4
24	08.6802.4.000	SPRING WASHER M4	10
25	08.6000.4.008	SCREW M4-8	10
26	08.6852.0.000	WASHER 10,5	8
27	08.6802.0.000	SPRING WASHER M10	4
28	08.6000.0.030	SCREW M10-30	4
29	17.0019.0.441	WASHER	8

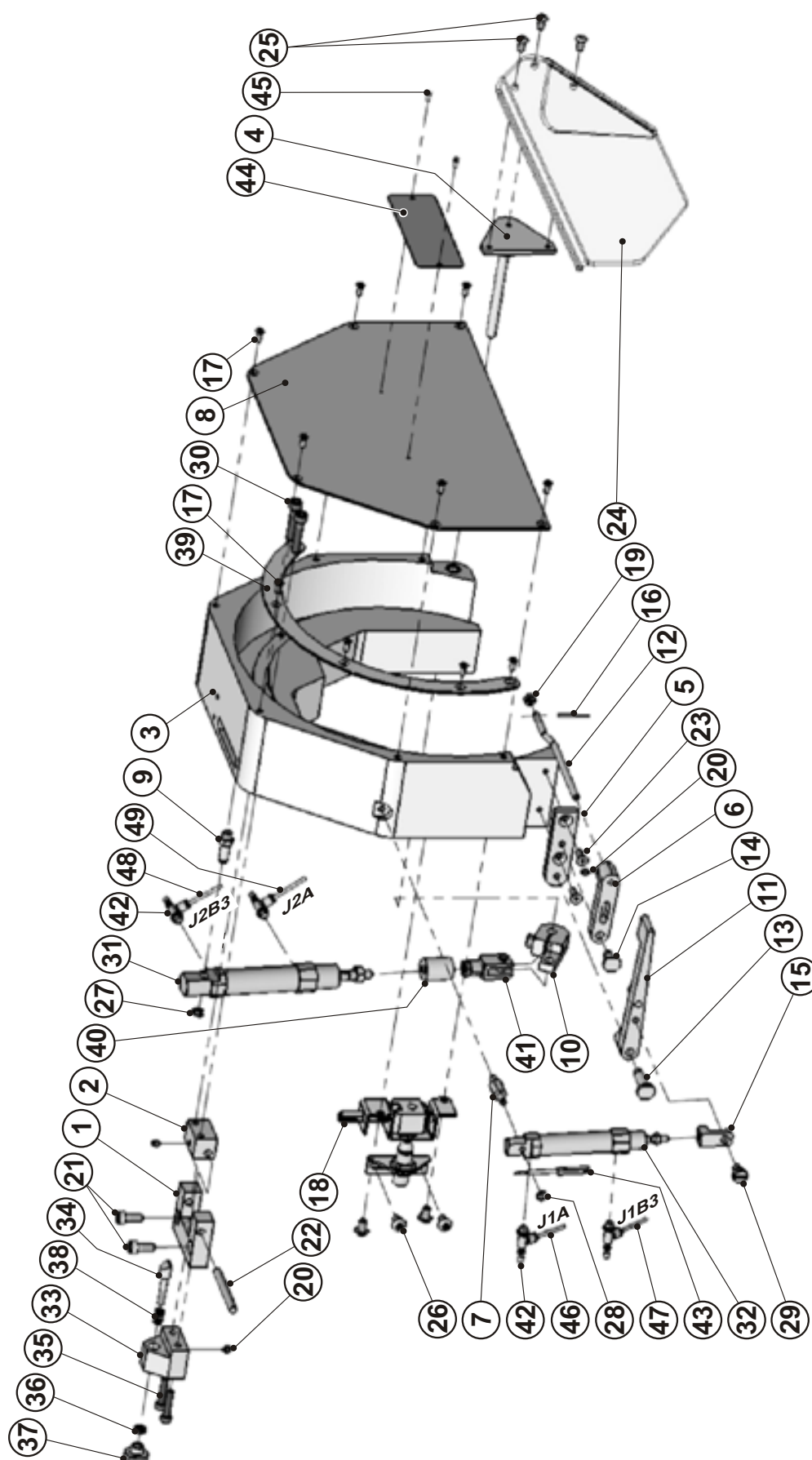
NEEDLE BAR LIFTER



NEEDLE BAR LIFTER

DET	PART NUMBER	DESCRIPTION	QTY.
01	71.1321.1.038	NEEDLE BAR LIFTER ●	1
02	71.1187.4.023	STUD	1
03	71.1225.5.042	STUD	1
04	08.6702.5.000	NUT M5	1
05	08.6400.4.004	SCREW M4-4	2
06	24971069	SPRING LC 032E-12	1
07	12.0008.3.809	CONNECTOR	1
08	12.0008.3.765	CYLINDER	1
09	08.6000.5.002	SCREW M5 - 22	1
10	12.0008.3.749	AIR TUBING - J6A ●●●	1

THREADER, NEEDLE COVER

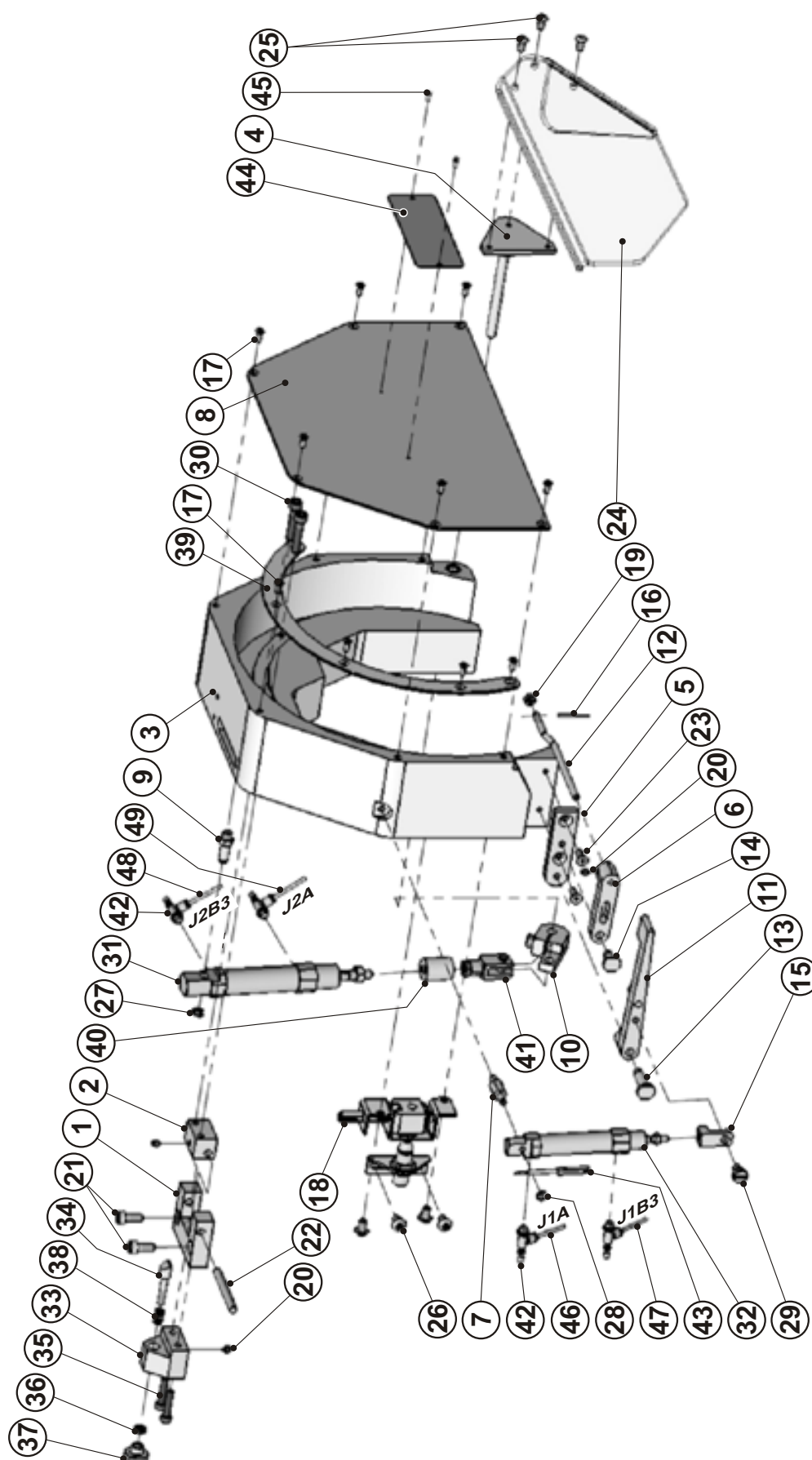


THREADER, NEEDLE COVER



DED	PART NUMBER	DESCRIPTION	QTY.
01	71.1241.8.083	HINGE	1
02	71.1242.8.036	HINGE	1
03	71.1587.6.007	GUARD	1
04	71.1557.4.044	MOUNTING SHAFT GUARD FLAP	1
05	71.1663.1.027	PLATE	1
06	71.1663.1.029	THREADER ARM	1
07	71.1664.1.018	STUD	1
08	71.1586.1.017	COVER	1
09	71.1273.9.139	STUD	1
10	71.1661.8.041	LEVER	1
11	71.1664.1.014	LEVER EXTENSION	1
12	71.1195.5.015	THREADER ROD	1
13	71.1174.1.015	STUD	1
14	71.1174.1.012	STUD	1
15	71.1664.1.017	PISTON ROD	1
16	37213001	NEEDLE THREADER	1
17	08.6100.3.008	SCREW M3-8	11
18	12.0008.6.228	LATCH	1
19	08.6702.4.000	NUT M4	1
20	08.6400.4.005	SCREW M4-5	3
21	08.6000.5.012	SCREW M5-12	2
22	12.1010.2.020	PIN 5h-50	1
23	08.6100.4.012	SCREW m4-12	2
24	71.1570.0.032	GUARD FLAP ●●●	1
25	08.6202.4.008	SCREW M4-8	3
26	08.6200.5.008	SCREW M5-8	4
27	12.1045.0.004	RETAINING RING 4	1
28	12.1045.0.003	RETAINING RING 3,2	1
29	22.0182.0.000	SCREW M5x4	1
30	08.6000.5.025	SCREW M5-25	2
31	12.0008.3.609	CYLINDER	1
32	12.0008.3.735	CYLINDER	1
33	71.1241.8.084	HOLDER	1
34	71.1241.8.085	STUD	1
35	08.6000.4.020	SCREW M4-20	2
36	08.6710.4.000	NUT M4	1
37	17.0017.2.041	NUT M4	1
38	12.3010.0.009	SPRING LC 020C 03 M	1
39	71.1488.1.006	PLATE	1
40	71.1661.8.044	SPACER	1
41	12.0008.3.806	KNUCKLE GKM6-12	1
42	12.0008.3.815	SPEED CONTROLER	4
43	06.7100.0.029	SENSOR BQ11	1
44	12.8000.1.034	LABEL EBS MARK II	1
45	12.1016.0.002	NAIL 1,86x6,35 (1/4)	2

THREADER, NEEDLE COVER

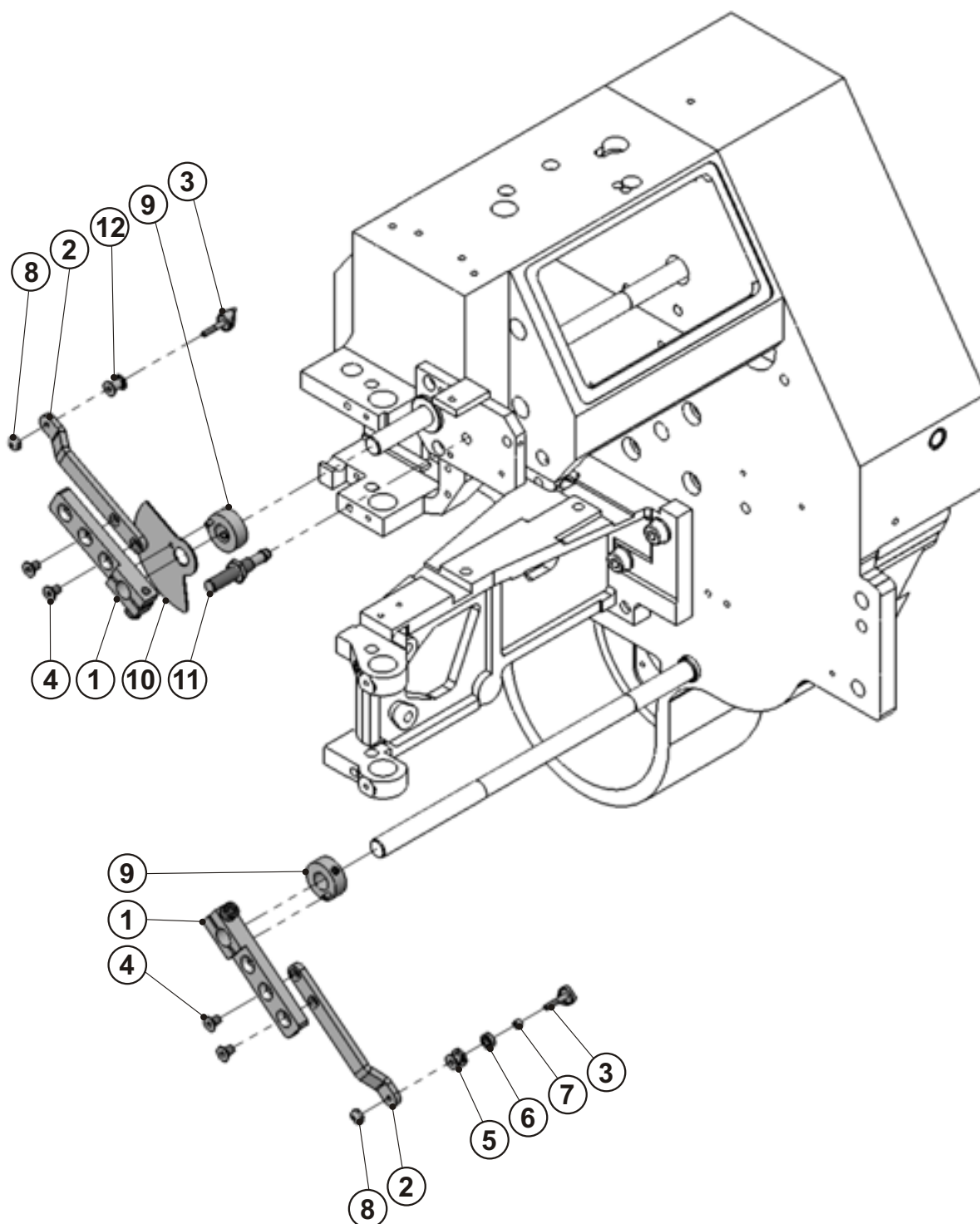


THREADER, NEEDLE COVER



DED	PART NUMBER	DESCRIPTION	QTY.
46	12.0008.3.749	AIR TUBING - J1A ●●●	1
47	12.0008.3.749	AIR TUBING - J1B3 ●●●	1
48	12.0008.3.749	AIR TUBING - J2B3 ●●●	1
49	12.0008.3.749	AIR TUBING - J2A ●●●	1

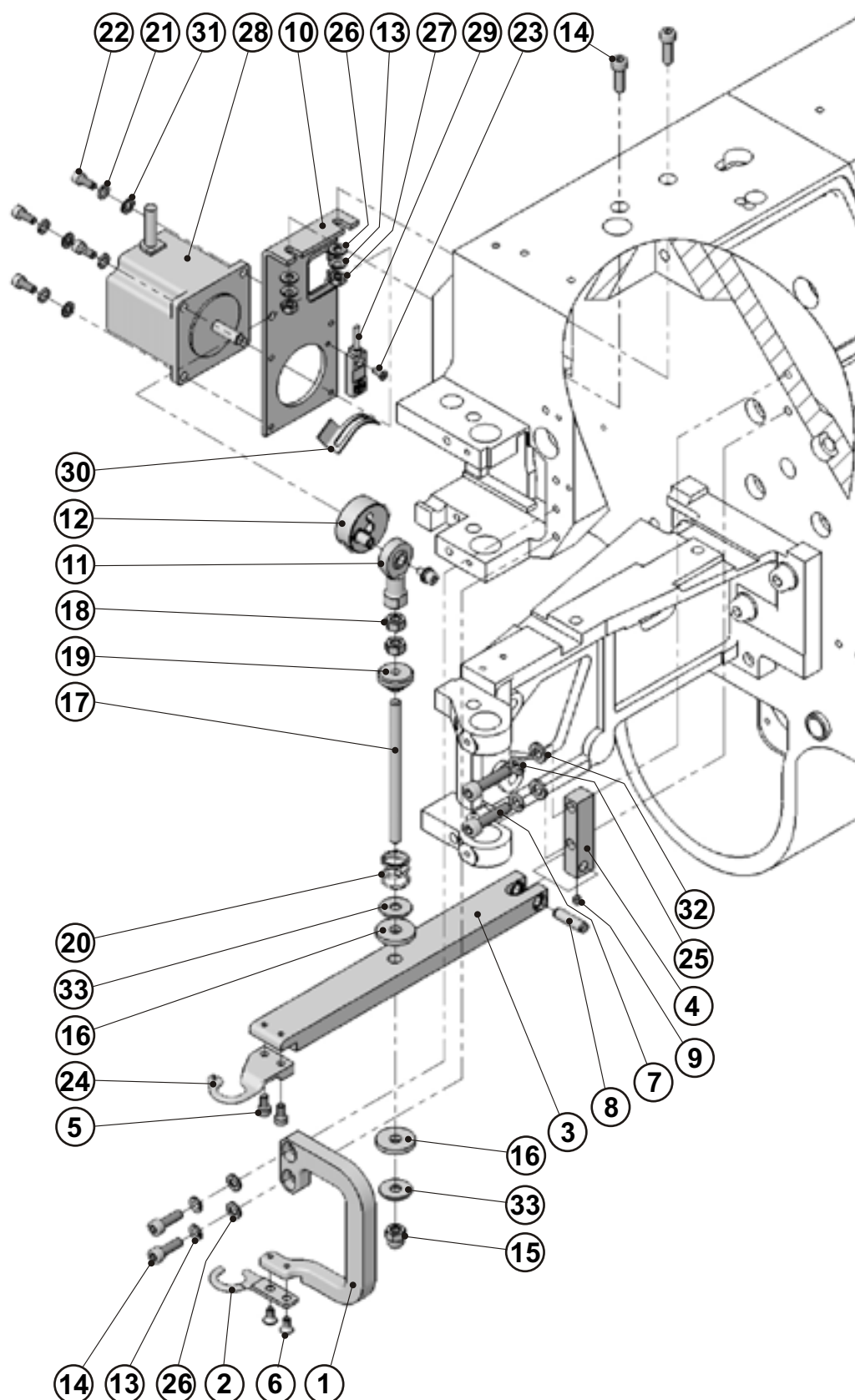
UPPER AND LOWER LOOPER



UPPER AND LOWER LOOPER

DET	PART NUMBER	DESCRIPTION	QTY.
01	71.1325.2.045	LOOPER ARM BRACKET ●	2
02	71.1463.5.017	LOOPER ARM	2
03	71.1723.1.024	LOOPER	2
04	08.6100.5.008	SCREW M5-8	4
05	71.1174.3.004	LOOPER SPACER	1
06	36341035	LOOPER ROLLER	1
07	31413002	SPACER	2
08	31815017	NUT # 5-40	2
09	71.1515.1.043	LOCATING COLLAR 12	2
10	71.1325.5.053	SENSOR PLATE	1
11	12.0010.4.025	SENSOR	1
12	71.1172.2.026	LOOPER SPACER	1

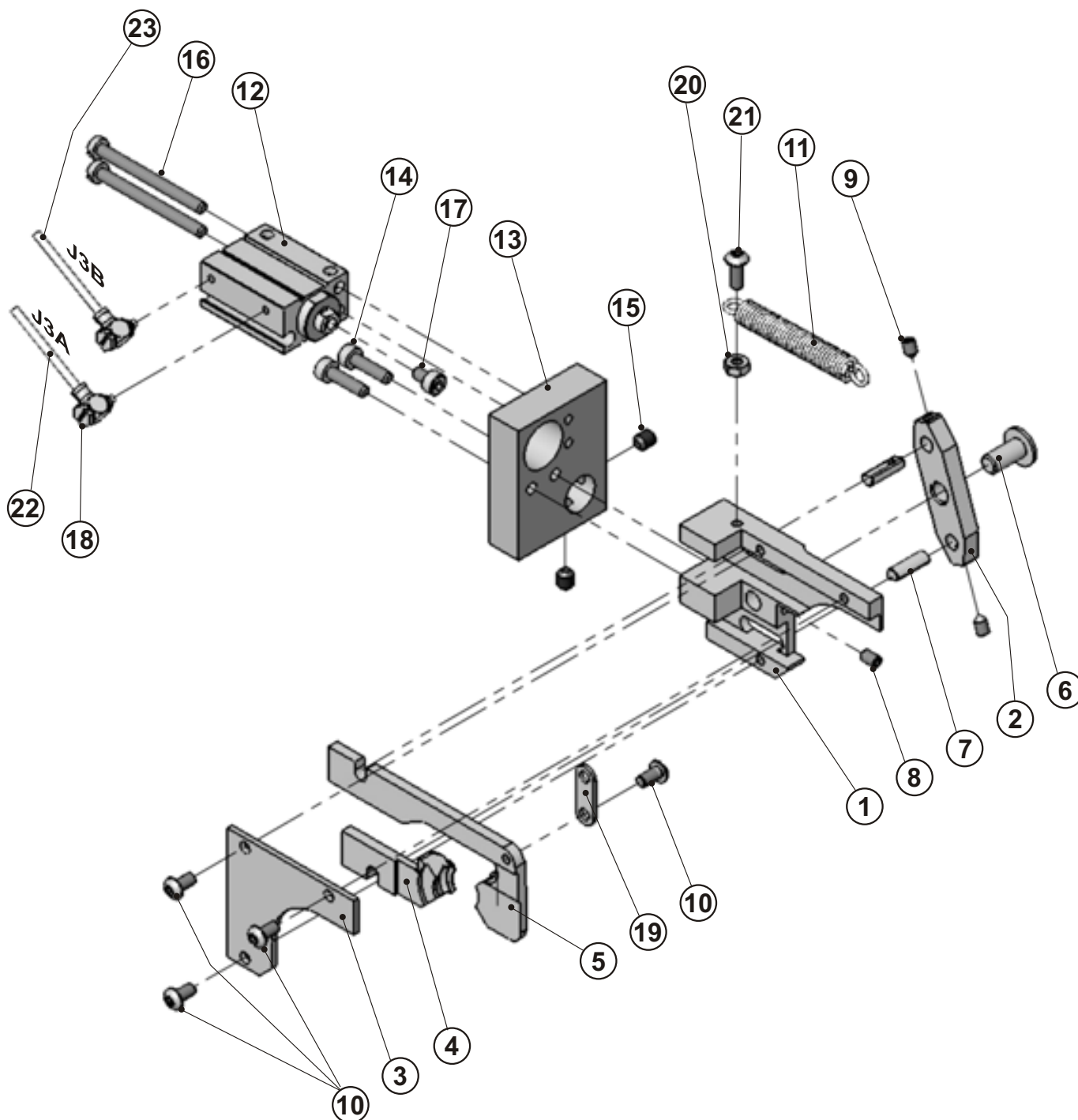
THREAD TENSION



THREAD TENSION

DET	PART NUMBER	DESCRIPTION	QTY.
01	71.1325.2.056	TENSION PLATE MOUNT	1
02	71.1661.1.101	TENSION PLATE	1
03	71.1332.4.001	BAR ●	1
04	71.1222.3.057	PIVOT MOUNT	1
05	08.6000.4.008	SCREW M4-8	2
06	08.6100.4.008	SCREW M4-8	2
07	08.6000.6.025	SCREW M6-25	2
08	12.1010.2.019	PIN 6h6-22	1
09	08.6400.4.005	SCREW M4-5	1
10	71.1451.5.096	MOTOR HOLDER	1
11	12.0008.3.700	BEARING ROD END KJ6D	1
12	71.1135.2.006	ECCENTRIC	1
13	08.6800.5.000	SPRING WASHER M5	4
14	08.6000.5.016	SCREW M5-16	4
15	08.6722.6.000	NUT M6	1
16	71.1677.0.005	WASHER	2
17	71.1129.1.029	SCREW	1
18	08.6702.6.000	NUT M6	2
19	71.1159.3.013	ADJUSTABLE NUT	1
20	24971495	SPRING LC 045-01	1
21	08.6800.4.000	WASHER 4	4
22	08.6000.4.010	SCREW M4-10	4
23	08.6100.3.008	SCREW M3-8	1
24	71.1721.1.134	TENSION FINGER	1
25	08.6800.6.000	WASHER 6	2
26	08.6850.5.000	WASHER 5,3	4
27	08.6700.5.000	NUT M5	2
28	06.7100.0.011	MOTOR U3 SX23-1412	1
29	06.7100.0.016	SENSOR FLAT BQ3	1
30	71.1325.5.048	SENSOR PLATE	1
31	08.6850.4.000	WASHER M4	4
32	08.6850.6.000	WASHER 6,4	2
33	08.6842.6.000	WASHER M6	2

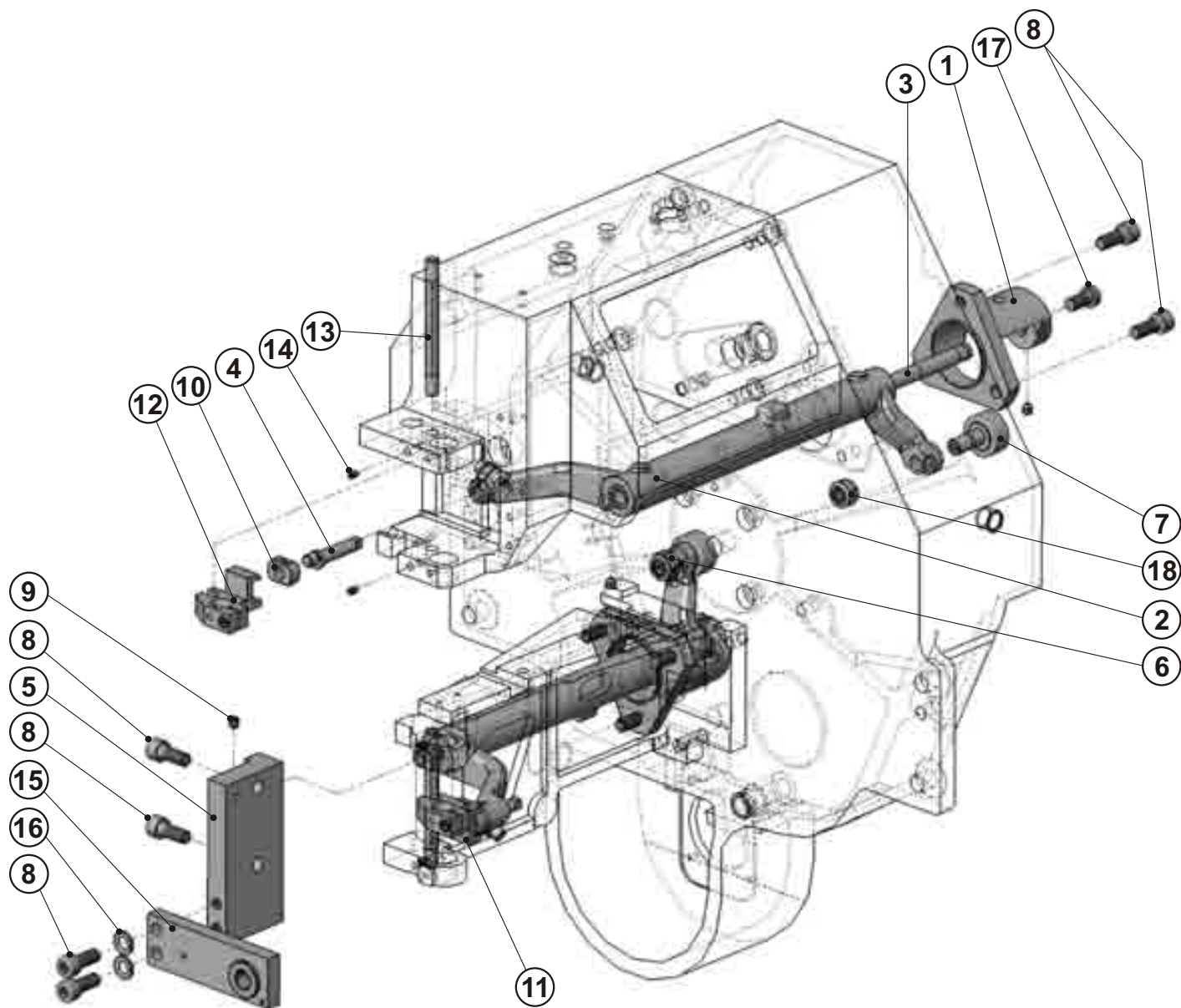
BUTTON CHUCK JAW



BUTTON CHUCK JAW

DET	PART NUMBER	DESCRIPTION	QTY.
01	71.1554.1.065	BUTTON CHUCK BODY	1
02	71.1666.1.026	LEVER	1
03	71.1577.8.058	PLATE	1
04	71.1784.1.038	CHUCK JAW INNER	1
05	71.1784.1.039	CHUCK JAW OUTER	1
06	71.1164.1.041	STUD	1
07	71.1121.1.011	PIN	2
08	08.6400.3.005	SCREW M3-5	1
09	08.6420.3.005	SCREW M3-5	2
10	08.6200.3.006	SCREW M3-6	4
11	24973041	SPRING	1
12	12.0008.3.631	CYLINDER	1
13	71.1651.8.068	PLATE ●	1
14	08.6000.3.012	SCREW M3-12	2
15	08.6400.4.005	SCREW M4-5	2
16	08.6032.3.035	SCREW M3-35	2
17	08.6000.3.005	SCREW M3-5	1
18	12.0008.3.826	CONNECTOR	2
19	71.1175.4.011	HOLDER	1
20	08.6702.3.000	NUT M3	1
21	08.6200.3.008	SCREW M3-8	1
22	12.0008.3.749	AIR TUBING - J3A ●●●	1
23	12.0008.3.749	AIR TUBING - J3B ●●●	1

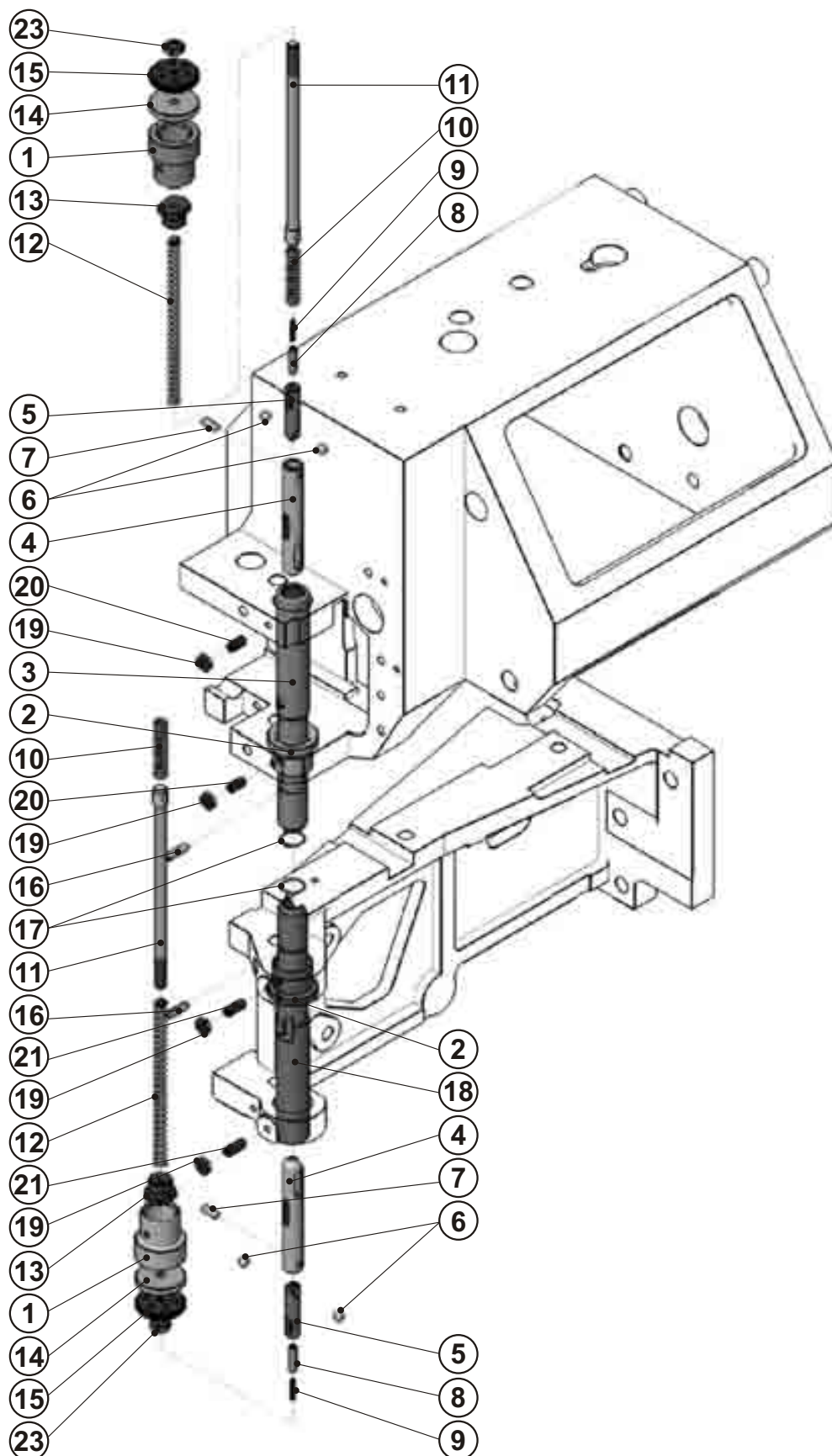
NEEDLE BAR MECHANISM LOWER AND UPPER



NEEDLE BAR MECHANISM LOWER AND UPPER

DET	PART NUMBER	DESCRIPTION	QTY.
01	71.1552.1.048	CONSOLE	2
02	71.1669.1.014	ROCKER ARM	2
03	71.1172.3.007	SHAFT	2
04	71.1651.8.030	ECCENTRIC STUD	2
05	71.1552.1.049	SUPPORT	1
06	08.6432.0.200	NUT M10x1	1
07	12.2099.2.000	CAM FOLLOWER KR26	2
08	08.6000.8.020	SCREW M8-20	11
09	08.6400.6.006	SCREW M6-6	4
10	17.0045.1.062	BLOCK	2
11	71.1344.1.002	NEEDLE BAR CLAMP LOWER	1
12	71.1344.1.003	NEEDLE BAR CLAMP UPPER	1
13	71.1177.2.035	BAR	2
14	08.6400.4.006	SCREW M4-6	4
15	71.1552.1.070	SUPPORT	1
16	08.6802.8.000	SPRING WASHER M8 ●	4
17	08.6017.8.016	SCREW M8-16	1
18	71.1651.8.084	NUT M10x1	1

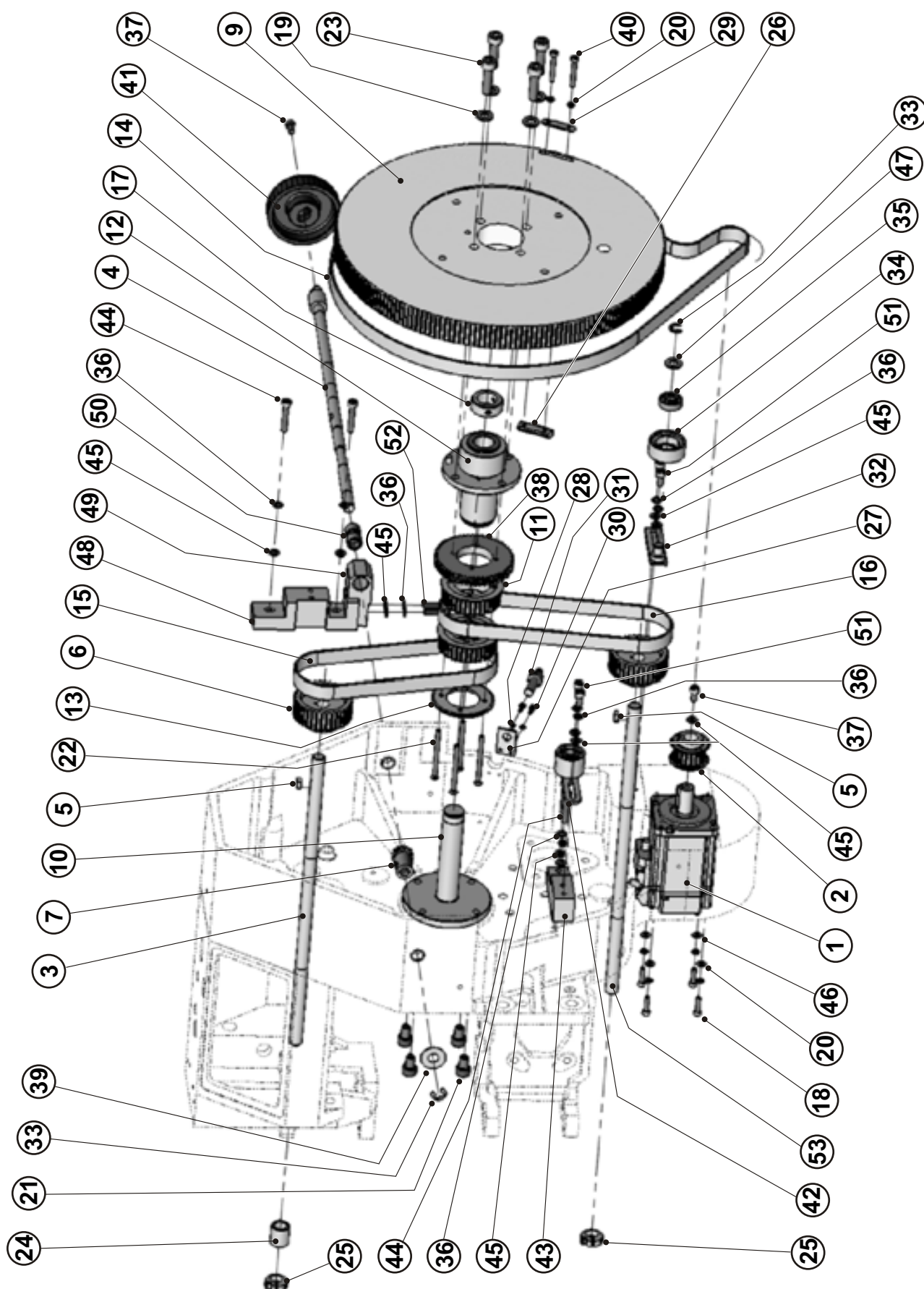
NEEDLE BAR ASSEMBLY



NEEDLE BAR ASSEMBLY

DET	PART NUMBER	DESCRIPTION	QTY.
01	36523021	NEEDLE BAR BUSHING	2
02	36523022	SMALL BUSH	2
03	31697003	NEEDLE BAR	1
04	35511071	NEEDLE SUPPORT SLEEVE	2
05	31566008	NEEDLE CLAMP SLEEVE	2
06	22965006	BALL	4
07	31111009	CONNECTING PIN	2
08	36771021	NEEDLE STOP	2
09	36531010	NEEDLE STOP SPRING	2
10	36532022	NEEDLE LOCK SPRING	2
11	31674025	SLEEVE EXTENSION	2
12	36532021	NEEDLE CAP SPRING	2
13	31695011	NEEDLE BAR SPRING CAP	2
14	31412001	SPRING PLUNGER WASHER ●●●	2
15	31593007	SLEEVE ADJUST NUT	2
16	31264001	NEEDLE STOP PIN	2
17	35131002	NEEDLE STOP PIN RETAINER	2
18	31697002	NEEDLE BAR	1
19	08.6712.4.000	NUT 10-32	4
20	08.6420.4.010	NUT M4	2
21	08.6420.4.012	SCREW M4x10	2
22	00200038	SCREW M4x12	1
23	08.6710.5.000	NUT M5	2

GEAR TRAIN AND MOTOR ASSEMBLY

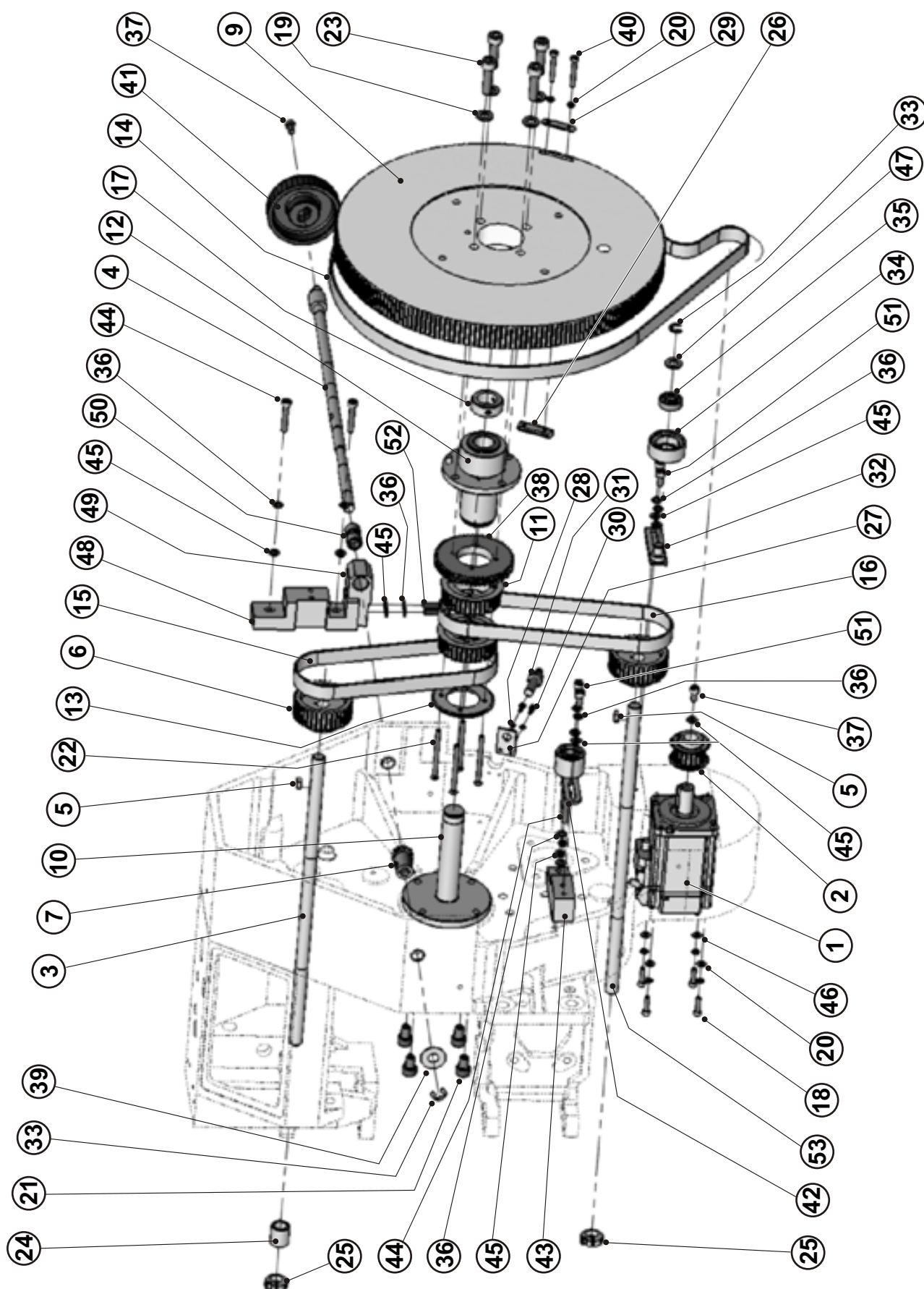


GEAR TRAIN AND MOTOR ASSEMBLY



DET	PART NUMBER	DESCRIPTION	QTY.
01	12.0010.4.177	SERVO MOTOR	1
02	71.1634.1.146	PULLEY	1
03	71.1172.8.011	LOOPER SHAFT	1
04	71.1173.7.040	SHAFT	1
05	12.4030.0.412	KEY	2
06	71.1622.5.012	PULLEY	2
07	71.1622.5.025	GEAR	1
08	12.4030.0.001	KEY	1
09	71.1651.6.019	CAM - NEEDLE BAR ●●●	1
10	71.1184.6.001	DRIVE GEAR STUD	1
11	71.1179.3.001	PULLEY	2
12	71.1178.4.003	HOLDER	1
13	71.1178.4.006	WASHER	1
14	12.5050.2.017	BELT 1150 5M GT15 ●●●	1
15	12.5050.2.016	BELT 460 5M GT15	1
16	12.5050.2.015	BELT 510 5M GT15	1
17	71.1178.4.007	COLLAR 20H8	1
18	08.6000.4.016	SCREW M4-16	4
19	08.6852.8.000	WASHER M8	4
20	08.6802.4.000	SPRING WASHER M4	6
21	08.6000.8.012	SCREW M8-12	4
22	08.6112.4.055	SCREW M4-55	4
23	08.6000.8.030	SCREW M8-30	4
24	71.1313.2.211	BUSHING ●●●	1
25	17.0043.6.351	COLLAR 12	2
26	71.1325.5.047	SENSOR SEGMENT	1
27	71.1223.6.103	HOLDER	1
28	08.6802.3.000	SPRING WASHER M3	2
29	71.1223.6.104	PLATE	1
30	08.6000.3.008	SCREW M3-8	2
31	12.0010.4.093	SENSOR	1
32	71.1178.4.010	TIGHTENER ROLLER	1
33	17.0027.4.085	LOCK RING 7	2
34	71.1178.4.008	ROLL	1
35	07.6321.0.020	BEARING	1
36	08.6802.5.000	SPRING WASHER M5	6
37	08.6000.5.010	SCREW M5-10	5
38	71.1178.4.004	GEAR	1
39	07.6321.0.001	BEARING PLATE	1
40	08.6000.4.030	SCREW M4-25	2
41	71.1671.2.025	HAND WHEEL ●	1
42	15.1128.0.050	TENSION PULLEY	1
43	71.1223.6.105	SPACER	1
44	08.6000.5.030	SCREW M5-30	2
45	08.6852.5.000	WASHER 5,3	2

GEAR TRAIN AND MOTOR ASSEMBLY

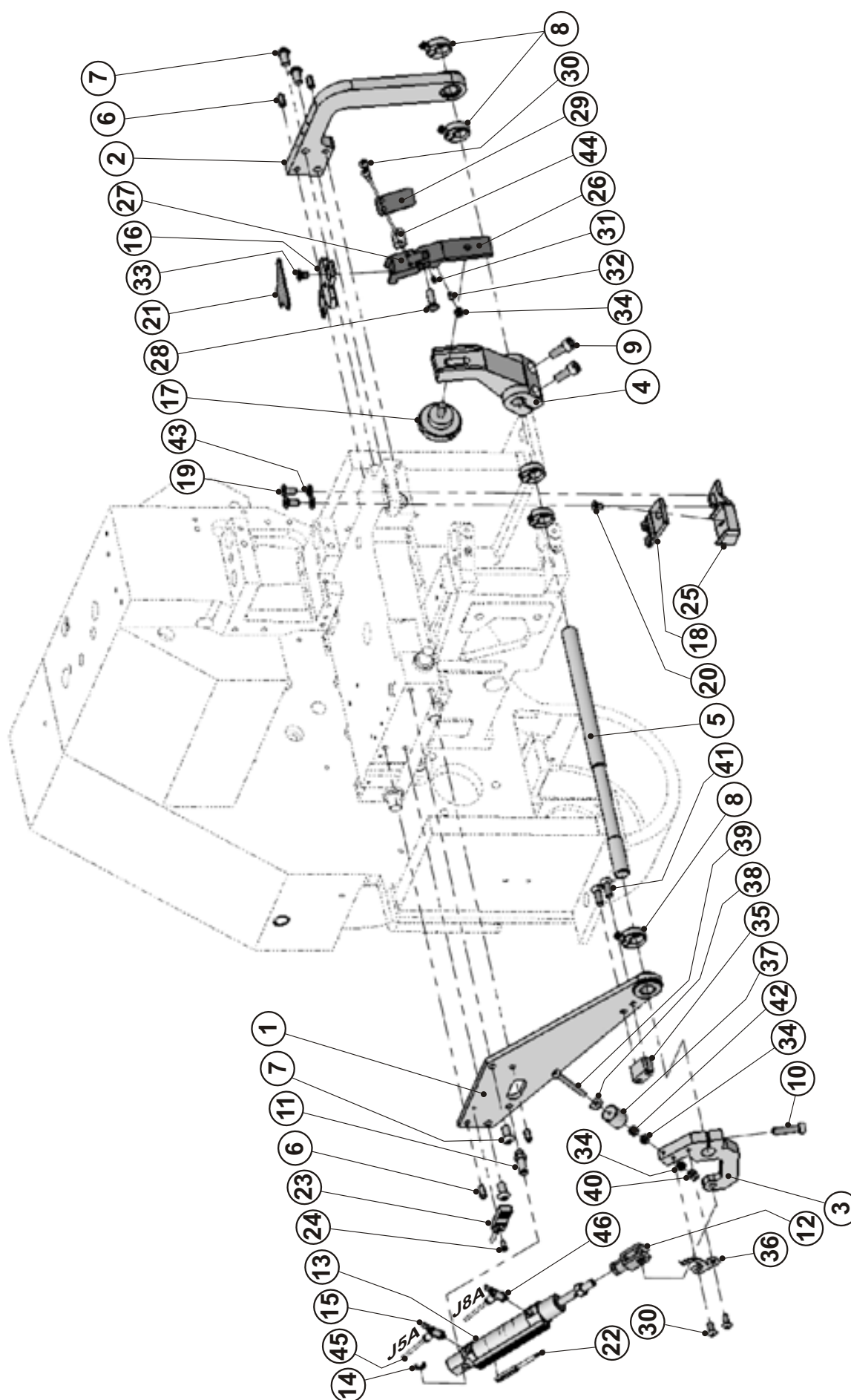


GEAR TRAIN AND MOTOR ASSEMBLY



DET	PART NUMBER	DESCRIPTION	QTY.
46	08.6852.4.000	WASHER M4	4
47	08.6850.8.000	WASHER 8	1
48	71.1223.6.106	BRACKET	1
49	71.1223.6.107	BRACKET	1
50	12.2080.0.012	BUSHING ●●	2
51	08.6000.5.012	SCREW M5-12	4
52	08.6000.5.020	SCREW M5 - 20	2
53	71.1172.8.012	LOOPER SHAFT - LOWER	1

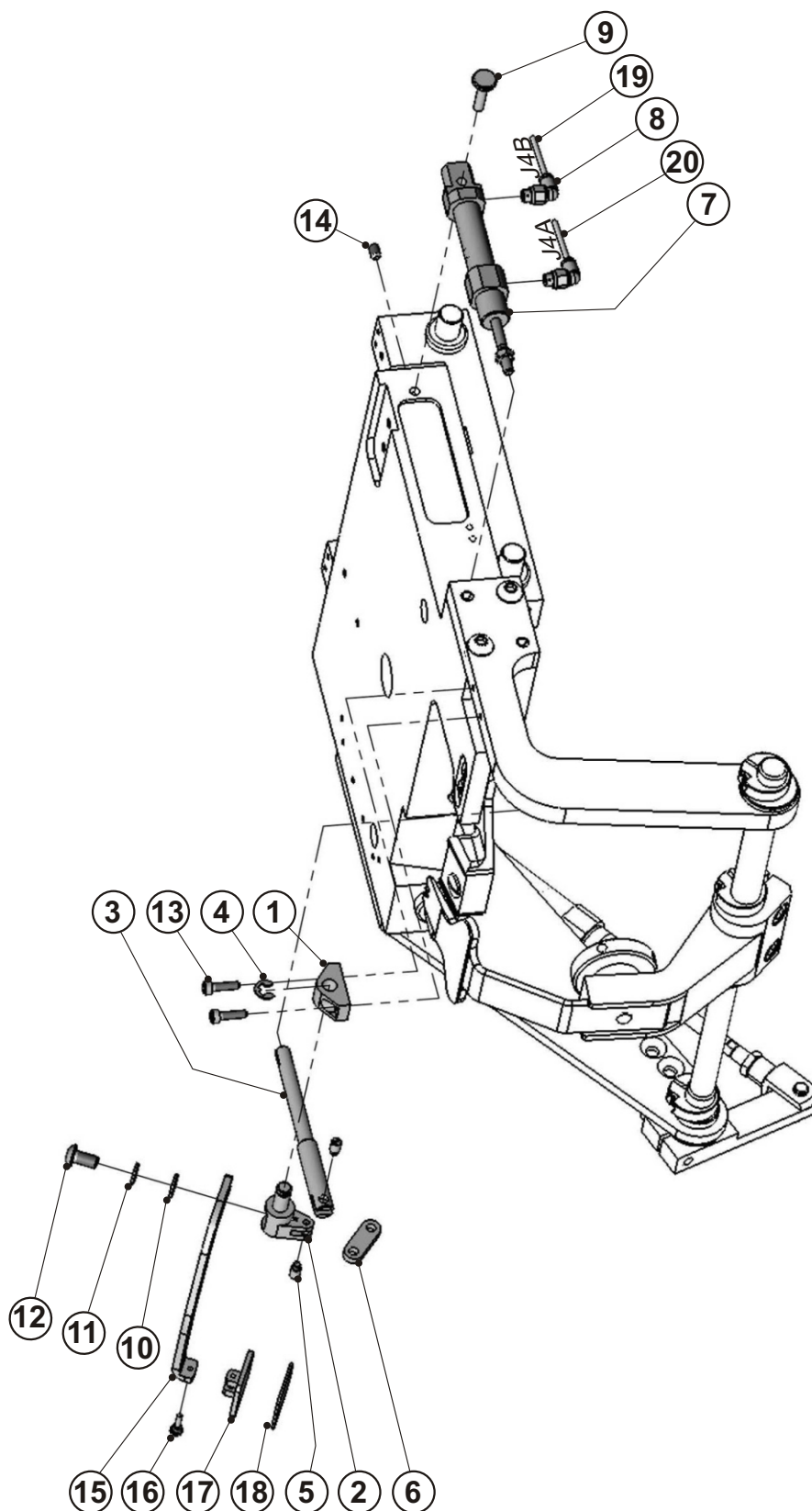
ADJUSTABLE LIFT TONGUE



ADJUSTABLE LIFT TONGUE

DET	PART NUMBER	DESCRIPTION	QTY.
01	71.1664.1.201	PLATE-LEFT ●	1
02	71.1664.1.202	PLATE-RIGHT ●	1
03	71.1665.1.018	LEVER	1
04	71.1664.1.079	LEVER ●	1
05	71.1129.1.026	TONGUE BAR	1
06	12.1014.0.510	SPRING PIN 5x10	4
07	08.6202.6.012	SCREW M6-12	4
08	17.0043.6.351	COLLAR 12	5
09	08.6000.6.016	SCREW M6-16	2
10	08.6000.5.022	SCREW M5-22	1
11	71.1273.9.139	STUD	1
12	12.0008.3.806	KNUCKLE	1
13	12.0008.3.808	CYLINDER	1
14	12.1045.0.004	RETAINING RING 4	1
15	12.0008.3.815	SPEED CONTROLER	2
16	71.1664.1.081	TONGUE (4-HOLE)	1
17	71.1169.6.006	TANG KNOB	1
18	71.1453.8.032	PUCKER PIN	1
19	08.6050.5.010	SCREW M5-10	2
20	08.6100.4.008	SCREW M4-8	1
21	71.1001.4.460	ANTI-SLIP MAT ●●●	1
22	06.7100.0.030	SENSOR BQ7	1
23	06.7100.0.024	SENSOR FLAT BQ6	1
24	08.6100.3.008	SCREW M3-8	1
25	71.1664.1.090	HOLDER	1
26	71.1664.1.085	ARM	1
27	71.1664.1.086	HOLDER	1
28	71.1664.1.087	STUD	1
29	71.1664.1.088	FLAT SPRING	1
30	08.6200.4.010	SCREW M4-10	4
31	08.6400.4.004	SCREW M4-4	1
32	08.6400.4.008	SCREW M4-8	1
33	08.6100.5.008	SCREW M5-8	1
34	08.6710.4.000	NUT M4	3
35	71.1665.1.017	ENDSTOP	1
36	71.1665.1.019	SPRING	1
37	71.1665.1.020	NUT M4	1
38	71.1665.1.021	ARROW	1
39	71.1665.1.022	SCREW M4x43	1
40	19.0016.3.406	NUT M4-6,5 CLOSED	1
41	08.6100.5.016	SCREW M5-16	2
42	08.6700.4.000	NUT M4	1
43	08.6850.5.000	WASHER 5,3	2
44	71.6280.0.004	WASHER	2
45	12.0008.3.749	AIR TUBING - J5A ●●●	1
46	12.0008.3.749	AIR TUBING - J8A ●●●	1

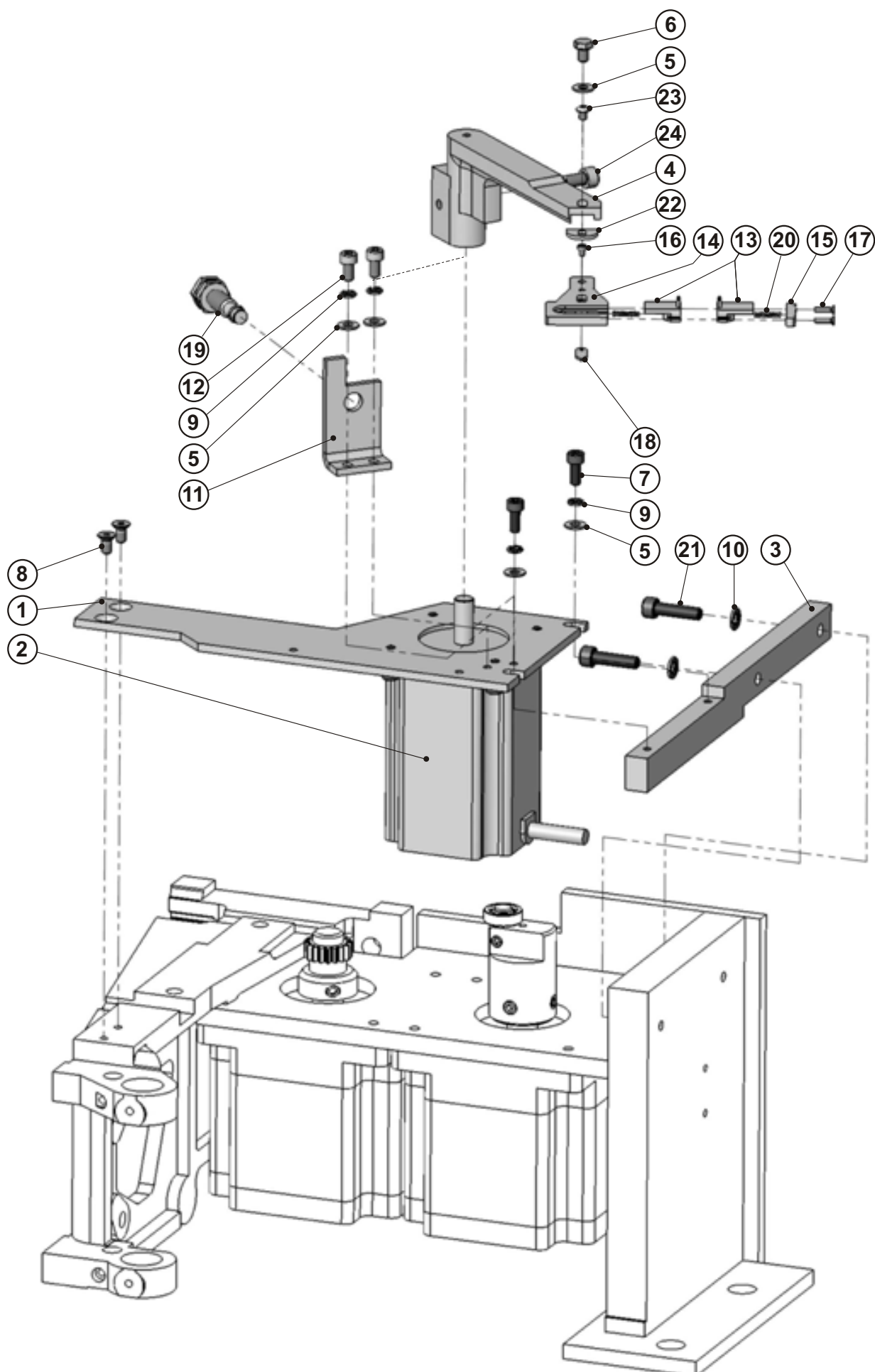
RETAINER ASSEMBLY



RETAINER ASSEMBLY

DET	PART NUMBER	DESCRIPTION	QTY.
01	71.1237.2.076	BLOCK	1
02	71.1164.2.016	STUD	1
03	71.1345.5.006	BAR	1
04	12.1045.0.004	RETAINING RING	1
05	71.1161.1.071	STUD	2
06	71.1161.1.072	LINK	1
07	12.0008.3.410	CYLINDER	1
08	12.0008.3.809	CONNECTOR	2
09	71.1225.5.042	STUD	1
10	08.6852.5.000	WASHER	1
11	08.6802.5.000	SPRING	1
12	08.6200.5.010	SCREW M5-10	1
13	08.6000.3.012	SCREW M3-12	2
14	08.6400.4.006	SCREW M4-6	1
15	71.1721.1.117	FABRIC HOLDER	1
16	24.2076.0.000	SCREW M3,5x0,35	1
17	71.1721.1.111	PLATE ●●●	1
18	71.1001.4.461	ANTI-SLIP MAT ●●●	1
19	12.0008.3.749	AIR TUBING - J4B ●●●	1
20	12.0008.3.749	AIR TUBING - J4A ●●●	1

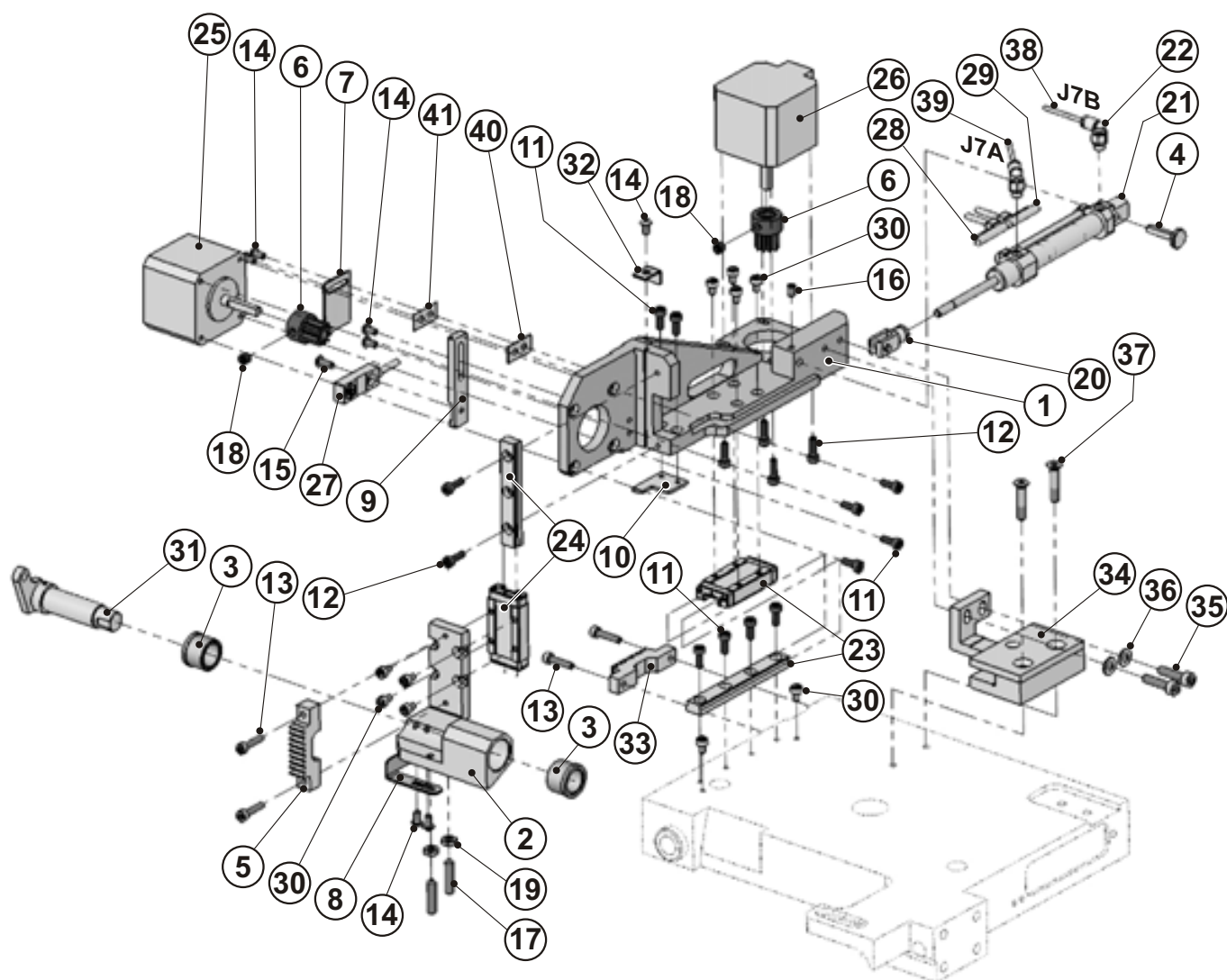
NEEDLE BAR MECHANISM LOWER AND UPPER



NEEDLE BAR MECHANISM LOWER AND UPPER

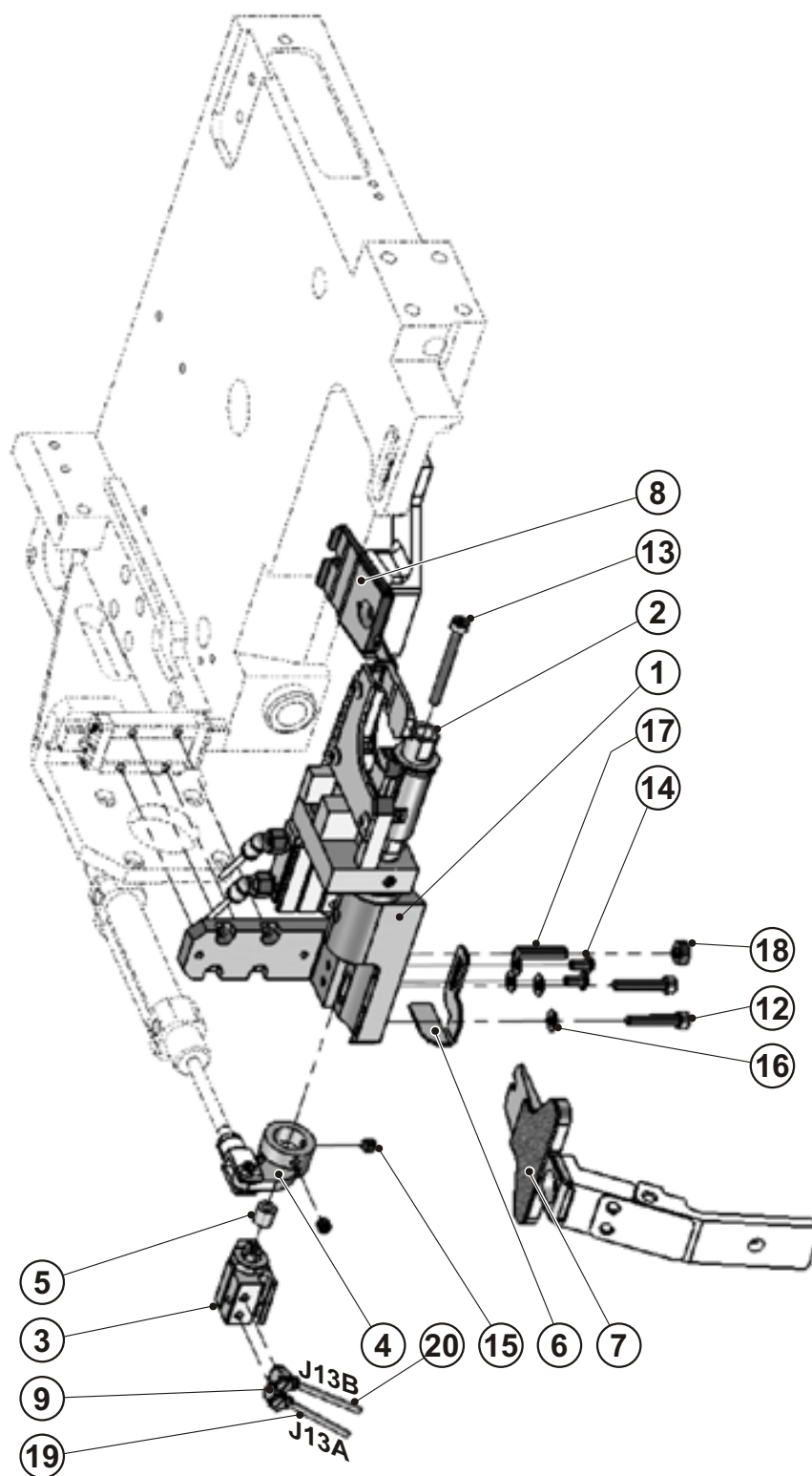
DET	PART NUMBER	DESCRIPTION	QTY.
01	71.1276.9.191	PLATE	1
02	06.7100.0.013	MOTOR	1
03	71.1652.0.004	HOLDER	1
04	71.1187.2.018	ARM ●	1
05	08.6850.4.000	WASHER M4	5
06	08.6310.4.006	SCREW M4-6	1
07	08.6000.4.010	SCREW M4-10	6
08	08.6100.4.008	SCREW M4-8	2
09	08.6800.4.000	SPRING WASHER 4	8
10	08.6800.5.000	SPRING WASHER M5	2
11	71.1652.0.006	SENSOR HOLDER	1
12	08.6000.4.008	SCREW M4-8	2
13	71.1171.4.017	BLOCK 2/3,5 ●●●	2
14	71.1325.1.076	PLATE	1
15	71.1325.1.077	STOP	1
16	08.6012.2.003	SCREW M2-3	1
17	08.6102.2.008	SCREW M2-8	2
18	71.1325.1.078	STOP	1
19	12.0010.4.093	SENSOR BQ 5	1
20	17.0026.0.219	SPRING	2
21	08.6000.5.020	SCREW M5-20	2
22	71.1325.1.082	STOP	1
23	08.6200.3.004	SCREW M3-4	1
24	08.6000.5.010	SCREW M5-10	1

BUTON CHUCK MECHANISM



BUTON CHUCK MECHANISM

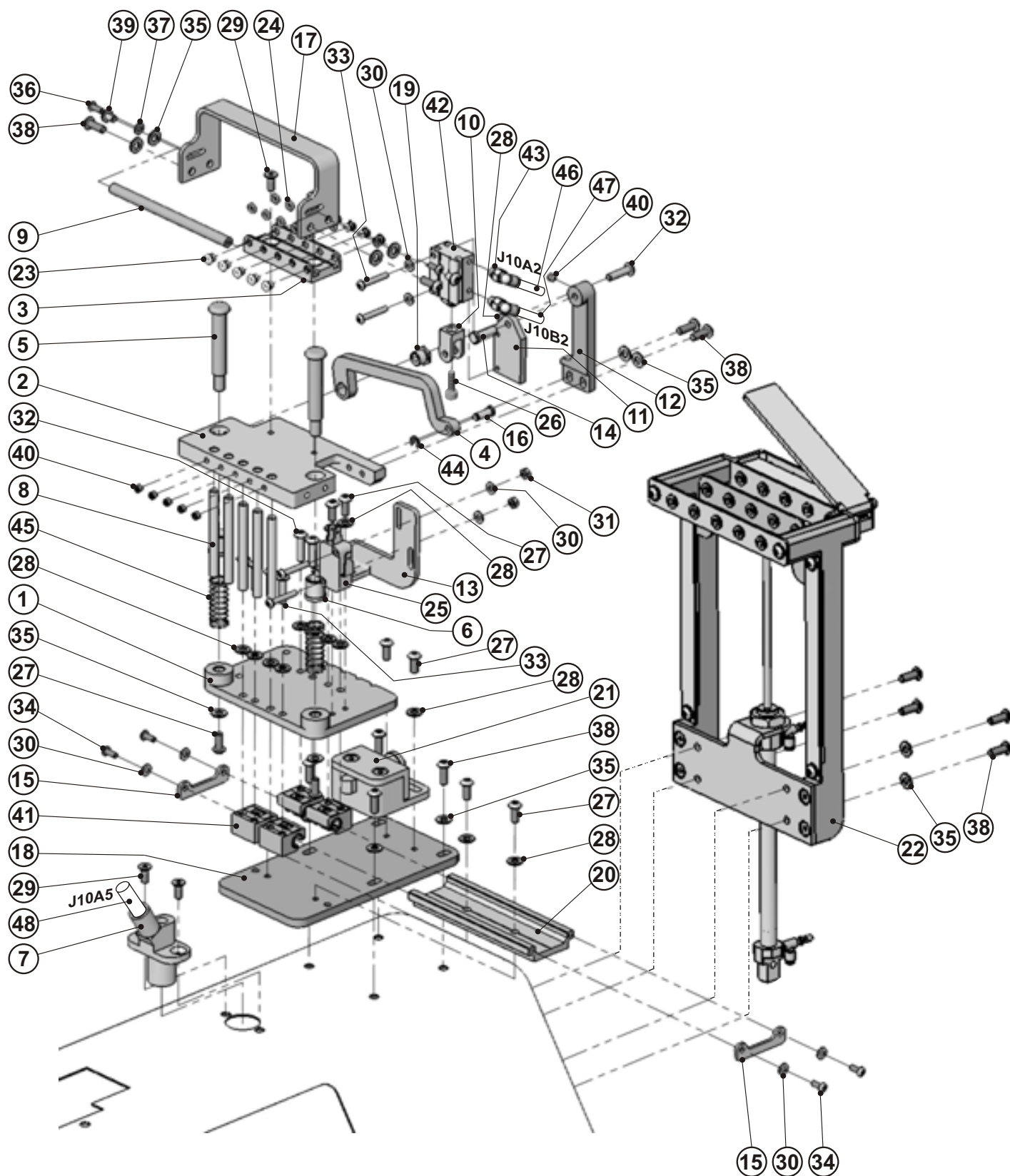
DET	PART NUMBER	DESCRIPTION	QTY.
01	71.1237.2.075	CONSOLE ●	1
02	71.1552.8.008	BRACKET ●	1
03	71.1651.8.074	BUSHING ●●●	2
04	71.1225.5.042	STUD	1
05	71.1651.8.070	RACK	1
06	71.1634.0.012	PINION	2
07	71.1325.5.049	SENSOR PLATE	1
08	71.1325.5.050	SENSOR PLATE	1
09	71.1325.5.051	HOLDER	1
10	71.1325.5.052	ENDSTOP	1
11	08.6000.3.008	SCREW M3-8	11
12	08.6000.3.010	SCREW M3-10	6
13	08.6000.3.014	SCREW M3-14	4
14	08.6200.3.006	SCREW M3-6	7
15	08.6200.3.008	SCREW M3-8	1
16	08.6400.4.006	SCREW M4-6	1
17	08.6400.4.018	SCREW M4-18	2
18	08.6400.5.005	SCREW M5-5	2
19	08.6712.4.000	NUT M4	2
20	12.0008.3.738	KNUCKLE	1
21	12.0008.3.881	CYLINDER	1
22	12.0008.3.809	CONNECTOR	2
23	71.1651.8.095	LINEAR GIUDE 70	1
24	71.1651.8.096	LINEAR GUIDE 57	1
25	06.7100.0.012	MOTOR U4	1
26	06.7100.0.014	MOTOR U6	1
27	06.7100.0.023	SENSOR BQ4	1
28	06.7100.0.031	SENSOR BQ8	1
29	06.7100.0.032	SENSOR BQ9	1
30	08.6000.3.005	SCREW M3-5	10
31	71.1651.8.076	LEVER - ASSEMBLY	1
32	71.1325.5.054	ENDSTOP	1
33	71.1651.8.092	RACK	1
34	71.6482.0.005	GUIDING	1
35	08.6000.4.016	SCREW M4-16	2
36	08.6850.4.000	WASHER M4	2
37	08.6100.4.020	SCREW M4-20	2
38	12.0008.3.749	AIR TUBING - J7B ●●●	1
39	12.0008.3.749	AIR TUBING - J7A ●●●	1
40	71.1325.5.058	WASHER	2
41	71.1325.5.059	WASHER	2

“V” ASSEMBLY

“V” ASSEMBLY

DET	PART NUMBER	DESCRIPTION	QTY.
01	71.1552.8.011	BRACKET - ASSEMBLY ●	1
02	71.1651.8.091	STUD ASSEMBLY	1
03	71.1651.8.088	CUJB10-4D - ADAPTATION	1
04	71.1237.2.078	LEVER	1
05	71.1651.8.090	SPACER	1
06	71.1325.5.056	SENSOR PLATE	1
07	03.5571.0.023	TONGUE "V"	1
08	71.1453.8.033	PUCKER PIN "V"	1
09	12.0008.3.826	CONNECTOR M-3ALU-2	2
10	12.0008.3.482	PN. VALVE SY3160-5MOU-C4-Q	1
11	06.7100.0.050	CABLE V-SHIFT ASSEMBLY	1
12	08.6000.3.018	SCREW M3-18	2
13	71.1651.8.093	SCREW M3-32	1
14	08.6200.3.006	SCREW M3-6	2
15	08.6400.4.004	SCREW M4-4	2
16	08.6850.3.000	WASHER 3,2	4
17	08.6400.4.018	SCREW M4-18	1
18	08.6700.4.000	NUT M4	1
19	12.0008.3.749	AIR TUBING - J13A ●●●	1
20	12.0008.3.749	AIR TUBING - J13B ●●●	1

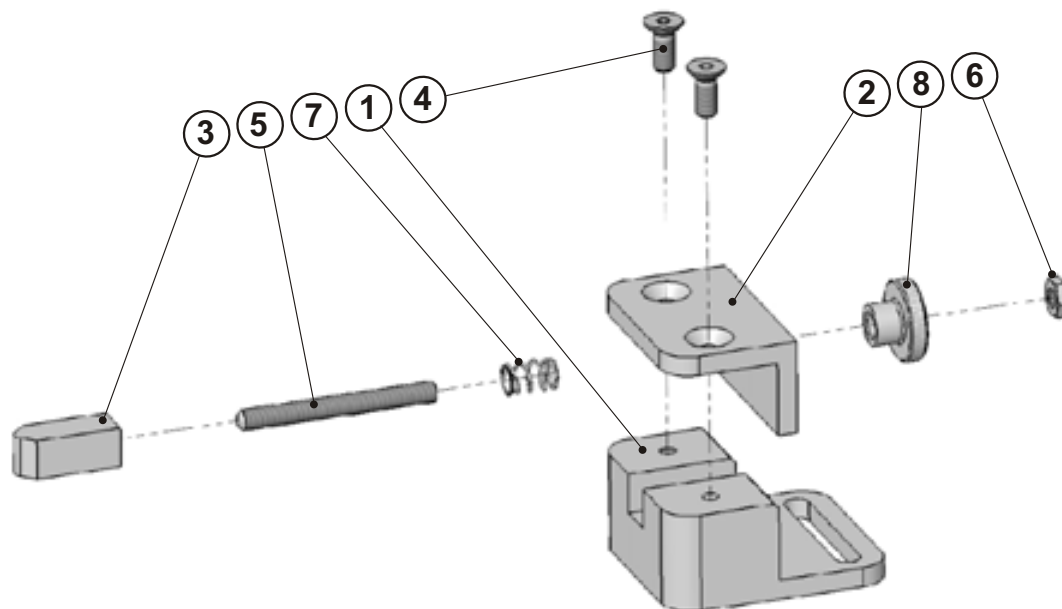
FIVE THREADS SYSTEM



FIVE THREADS SYSTEM

DET	PART NUMBER	DESCRIPTION	QTY.
01	71.1546.1.101	BASE PLATE	1
02	71.1546.1.102	PLATE ●	1
03	71.1546.1.103	LEADER	1
04	71.1546.1.104	BAR	1
05	71.1546.1.105	GUIDE-PIN	2
06	71.1546.1.106	GUIDE BUSHING ●●●	2
07	71.1546.1.107	DIFFUSER ●	1
08	71.1546.1.108	TUBE	5
09	71.1546.1.109	CROSS-BAR	1
10	71.1546.1.111	KNUCKLE	1
11	71.1546.1.112	CYLINDER HOLDER	1
12	71.1546.1.113	BRACKET ●	1
13	71.1546.1.114	MICRO SWITCH HOLDER	1
14	71.1546.1.115	STUD	1
15	71.1546.1.116	END STOP	2
16	71.1546.1.118	STUD	1
17	71.1546.1.119	HANDRAIL	1
18	71.1546.1.120	BASE PLATE ●	1
19	71.1546.1.121	ECCENTRIC	1
20	71.1546.1.123	RAIL ●	1
21	SEE PAGE 3-32	LOCK ASSEMBLY	1
22	SEE PAGE 3-34	THREAD TENSION ASSEMBLY	1
23	01.7447.1.000	GUIDE	10
24	01.6551.0.000	O-RING 1,78x2.57	10
25	06.0120.0.000	SWITCH-MICRO	1
26	08.6000.3.010	SCREW M3-10	1
27	08.6200.4.010	SCREW M4-10	8
28	08.6850.4.000	WASHER M4	15
29	08.6100.4.010	SCREW M4-10	4
30	08.6850.3.000	WASHER 3,2	8
31	08.6700.3.000	NUT M3	2
32	08.6200.4.016	SCREW M4-16	9
33	08.6200.3.020	SCREW M3-20	4
34	08.6200.3.008	SCREW M3-8	4
35	08.6852.4.000	WASHER M4	16
36	08.6202.3.008	SCREW M3-8	2
37	08.6852.3.000	WASHER M3	2
38	08.6202.4.010	SCREW M4-10	12
39	08.6202.4.006	SCREW M4-6	2
40	08.6400.4.004	SCREW M4-4	6
41	12.2070.1.004	CARRIAGE	4
42	12.0008.3.631	CYLINDER	1
43	12.0008.3.809	CONNECTOR	2
44	12.1045.0.003	RETAINING RING 3,2	1
45	12.3010.0.018	SPRING	2
46	12.0008.3.749	AIR TUBING - J10A2 ●●●	1
47	12.0008.3.749	AIR TUBING - J10B2 ●●●	1
48	12.0008.3.998	AIR TUBING - J10A5 ●●●	1

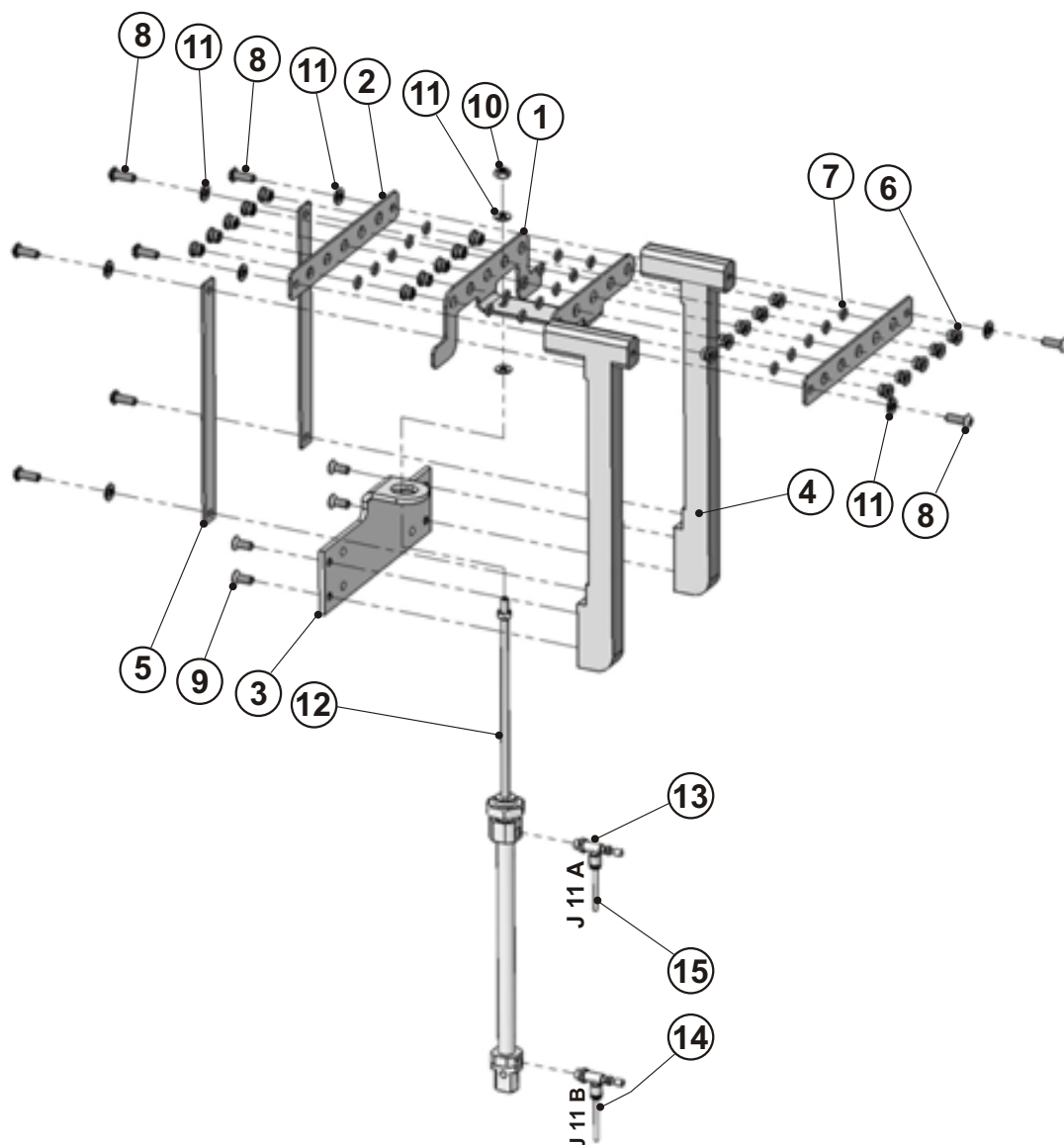
LOCK ASSEMBLY



LOCK ASSEMBLY

DET	PART NUMBER	DESCRIPTION	QTY.
01	71.1546.1.131	BACKSTOP - BODY	1
02	71.1546.1.132	BACKSTOP - COVER	1
03	71.1546.1.133	BACKSTOP - STUD	1
04	08.6100.4.010	SCREW M4-10	2
05	08.6400.4.040	SCREW M4-40	1
06	08.6710.4.000	NUT M4	1
07	12.3010.0.009	SPRING LC 020C 03 M	1
08	17.0017.2.041	NUT M4	1

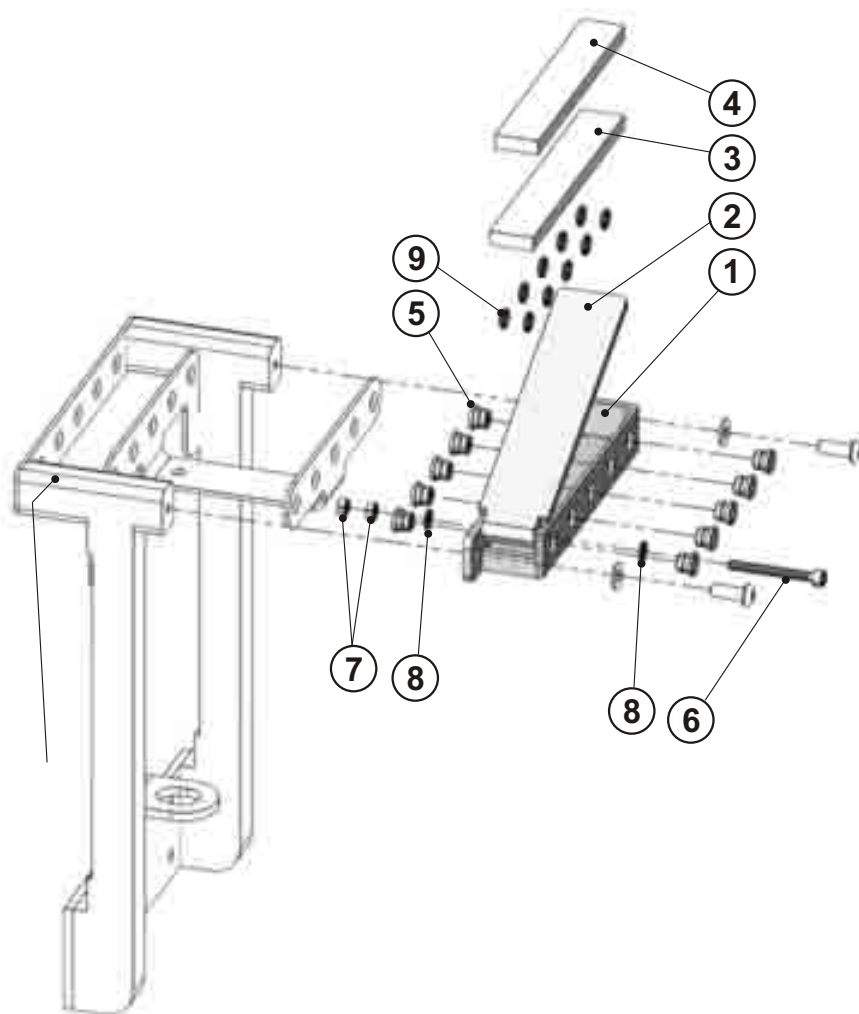
THREAD TENSION UPPER ASSEMBLY



THREAD TENSION UPPER ASSEMBLY

[illegible]

LUBRICATION BOX ASSEMBLY



LUBRICATION BOX ASSEMBLY

[illegible]

TABLE MECHANISM

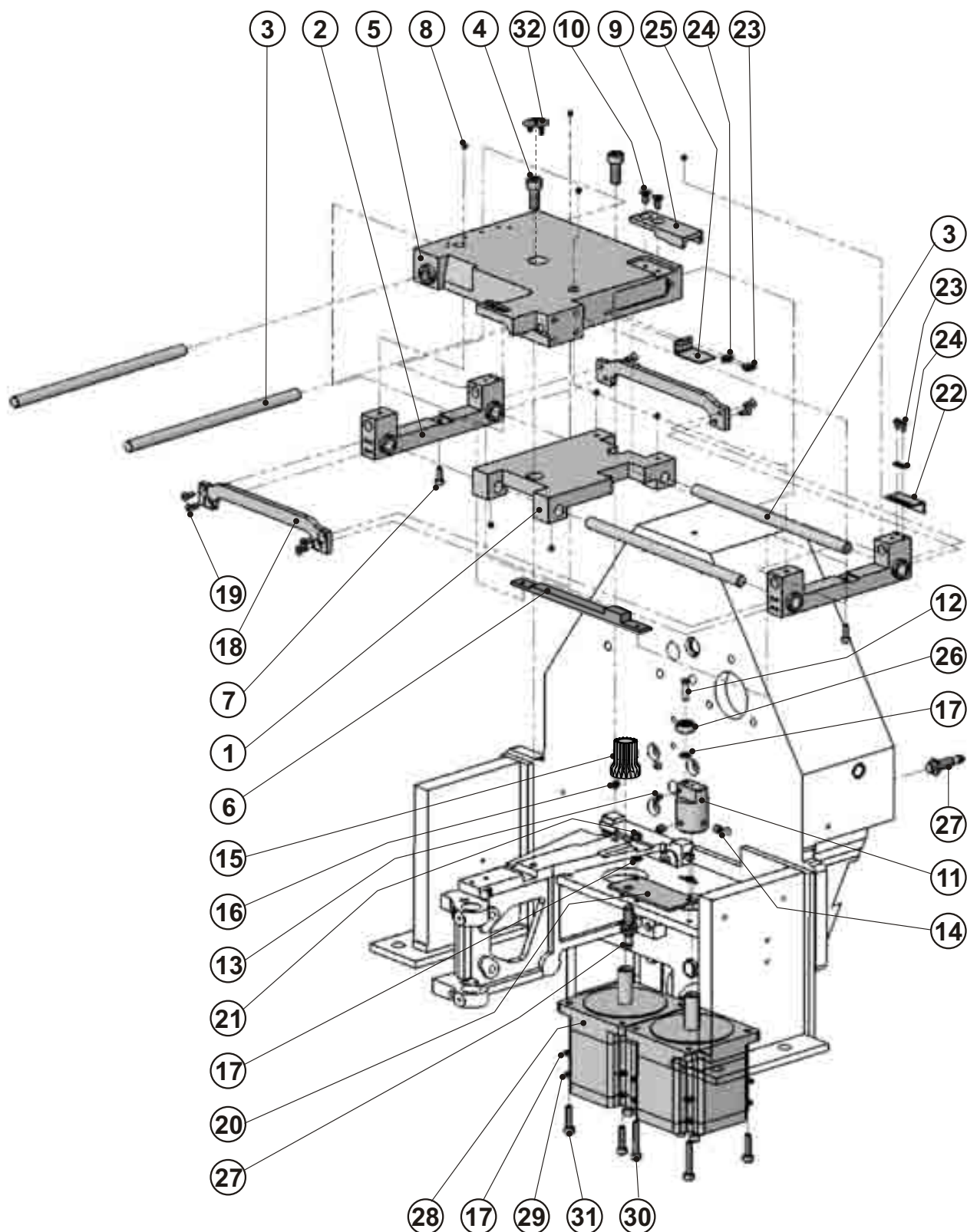
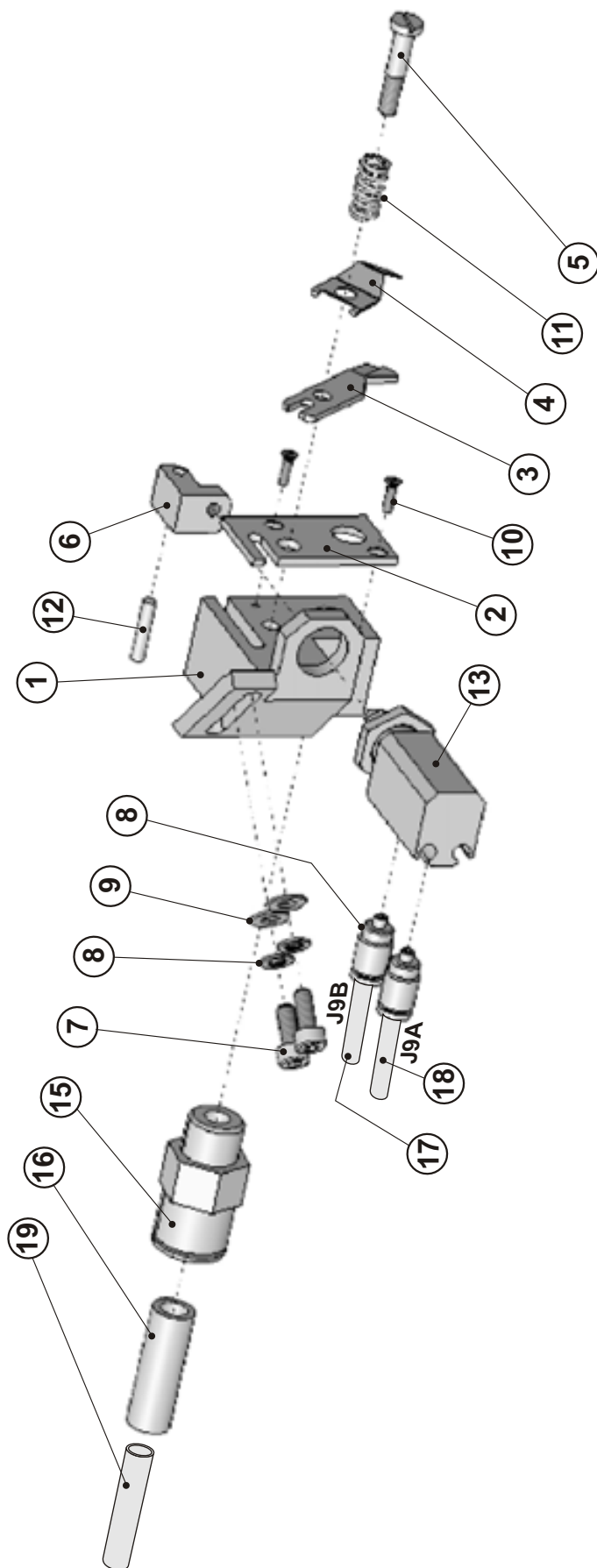


TABLE MECHANISM

DET	PART NUMBER	DESCRIPTION	QTY.
01	71.1222.6.011	HOLDER	1
02	71.1666.6.006	SLIDE RAIL "X" ASM.	2
03	71.1184.8.019	BAR W10h6x200	4
04	08.6000.8.020	SCREW M8-20	2
05	71.1325.1.016	TABLE	1
06	71.1182.3.003	RACK	1
07	08.6000.4.012	SCREW M4-12	2
08	08.6400.4.004	SCREW M4-4	8
09	71.1276.6.056	GIB	1
10	08.6100.5.010	SCREW M5-10	2
11	71.1666.6.007	ADAPTOR	1
12	71.1142.2.047	PIVOT	1
13	08.6400.5.005	SCREW M5-5	1
14	08.6400.6.008	SCREW M6-8	2
15	71.1182.3.002	GEAR	1
16	08.6400.6.006	SCREW M6-6	3
17	08.6850.5.000	WASHER 5,3	11
18	71.1273.5.093	CROSSBAR	2
19	08.6100.4.010	SCREW M4-10	8
20	71.1223.6.102	HOLDER	1
21	08.6700.5.000	NUT M5	2
22	71.1325.5.045	SENSOR PLATE	1
23	08.6000.3.005	SCREW M3-5	4
24	08.6850.3.000	WASHER 3,2	4
25	71.1325.5.046	SENSOR PLATE	1
26	71.1666.6.008	ROLLER	1
27	12.0010.4.093	SENSOR	2
28	06.7100.0.010	STEPPER MOTOR 2-PHASE U1. U2	2
29	08.6800.5.000	SPRING WASHER M5	8
30	08.6000.5.030	SCREW M5-30	2
31	08.6000.5.020	SCREW M5-20	6
32	12.0008.4.777	PLUG	1

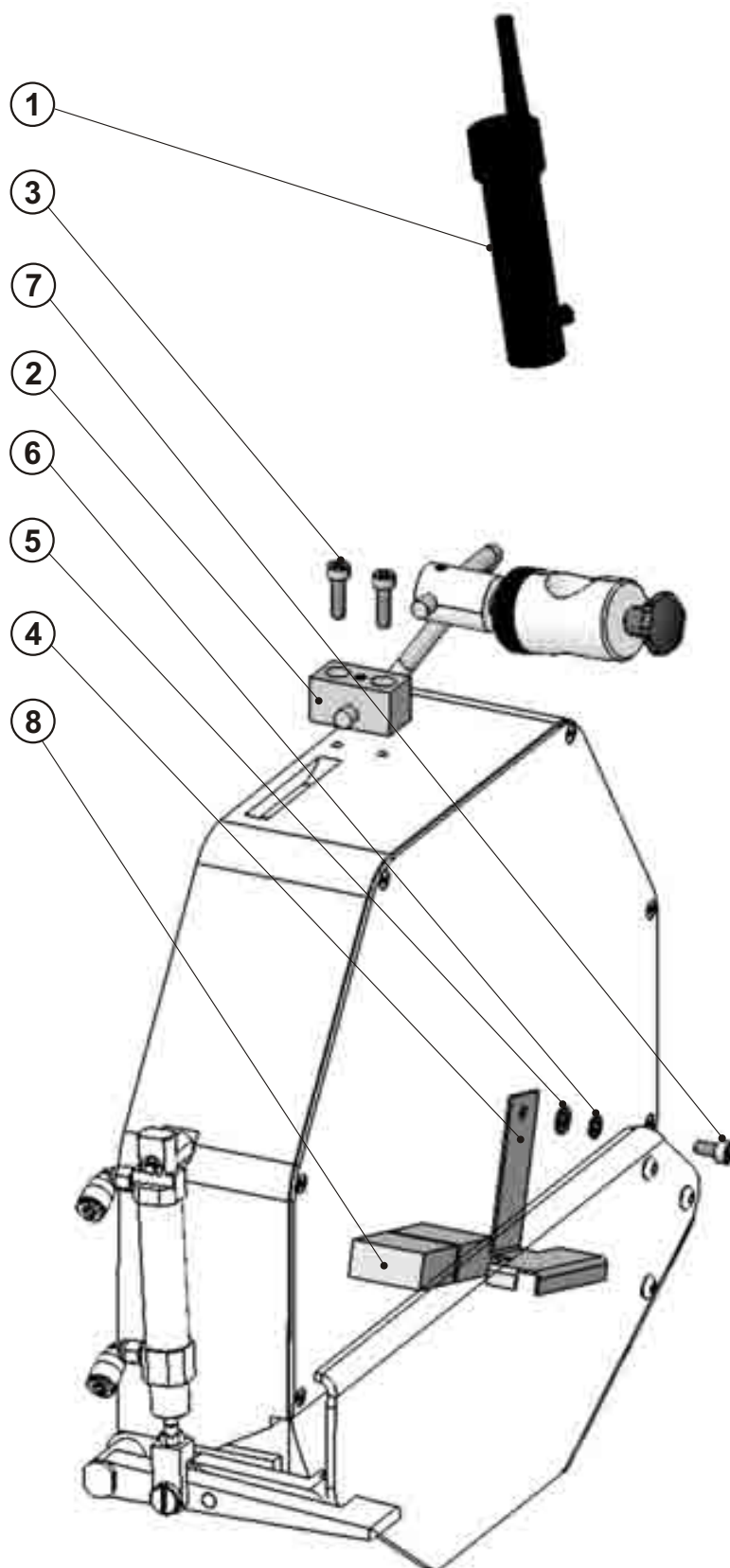
AIR THREADING



AIR THREADING

DET	PART NUMBER	DESCRIPTION	QTY.
01	71.1712.4.212	HOLDER	1
02	71.1661.1.104	KNIFE	1
03	71.1661.1.105	KNIFE	1
04	71.1661.1.106	SPRING PLATE	1
05	71.1151.1.055	SCREW	1
06	71.1784.1.040	GUIDE	1
07	08.6000.4.010	SCREW M4-10	2
08	08.6802.4.000	SPRING WASHER M4	2
09	08.6852.4.000	WASHER M4	2
10	08.6102.2.008	SCREW M2-8	2
11	12.3010.0.019	SPRING	1
12	12.1010.0.316	PIN 3x16	1
13	12.0008.3.862	CYLINDER CDJP2B10-5D	1
14	12.0008.3.628	CONNECTOR KJS04-M3	2
15	12.0008.3.863	CONNECTOR KQ2H10-02S ●●	1
16	12.0008.3.876	HOCE SMC TU1065BU-20 400mm ●●●	1
17	12.0008.3.416	AIR TUBING - J9B ●●●	1
18	12.0008.3.416	AIR TUBING - J9A ●●●	1
19	12.0008.3.415	AIR TUBING-SMC L=400mm ●●●	1

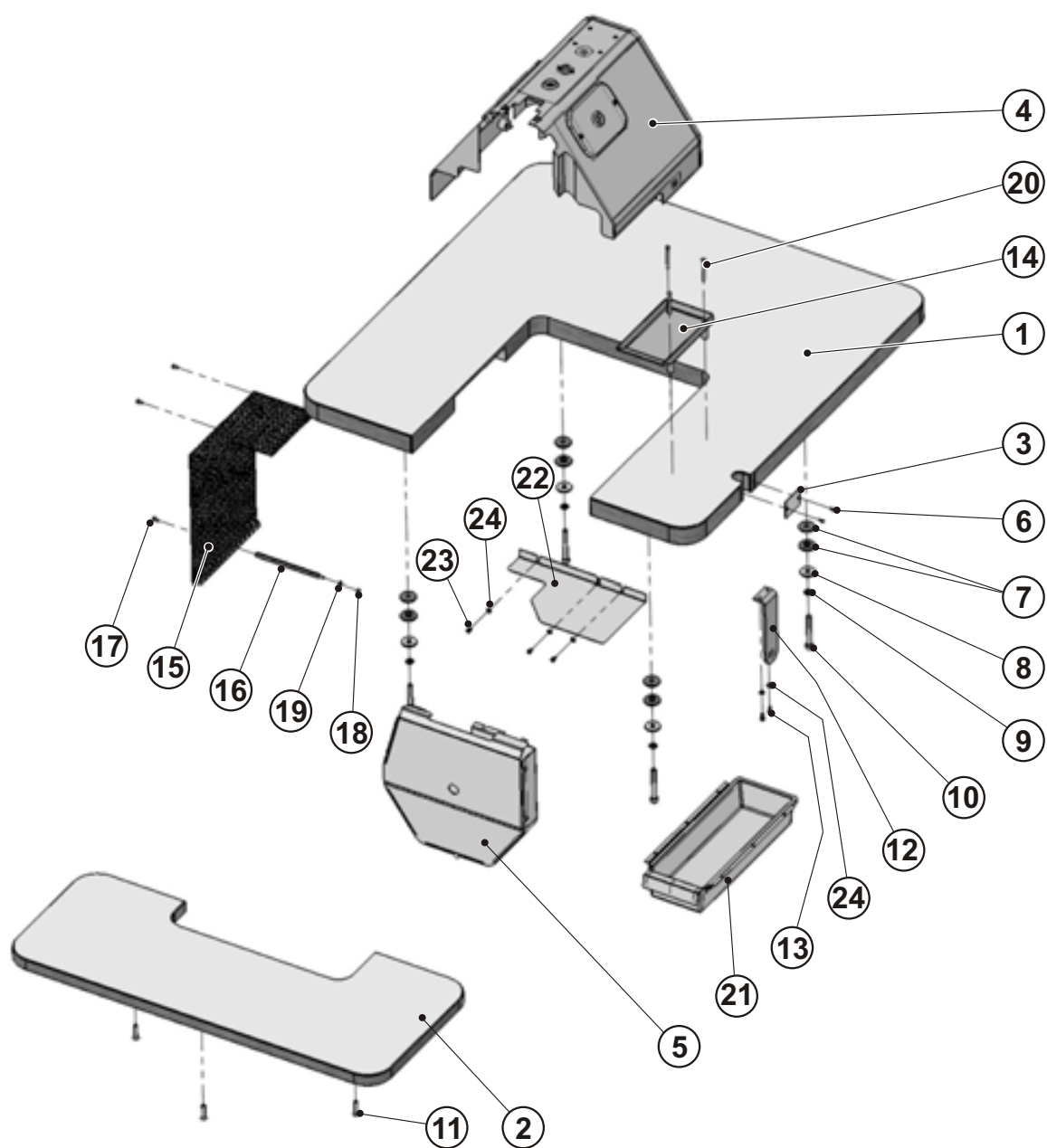
LIGHT ASSEMBLY



LIGHT ASSEMBLY

DET	PART NUMBER	DESCRIPTION	QTY.
01	12.0010.4.115	LED POINTER CROSS - RED	1
	12.0010.4.116	POINTER POWER SUPPLY MOUNTED ON EL.BOX BACKSIDE	1
02	12.0010.4.051	BRACKET 34 BALLJOINT	1
03	08.6000.4.015	SCREW M4-14	2
04	71.1451.5.108	LED LIGHT HOLDER	1
05	08.6852.4.000	WASHER M4	1
06	08.6802.4.000	SPRING WASHER M4	1
07	08.6000.4.008	SCREW M4-8	1
08	12.0010.4.036	LED KIT	1
		LED POWER SUPPLY MOUNTED EL.BOX BACKSIDE	

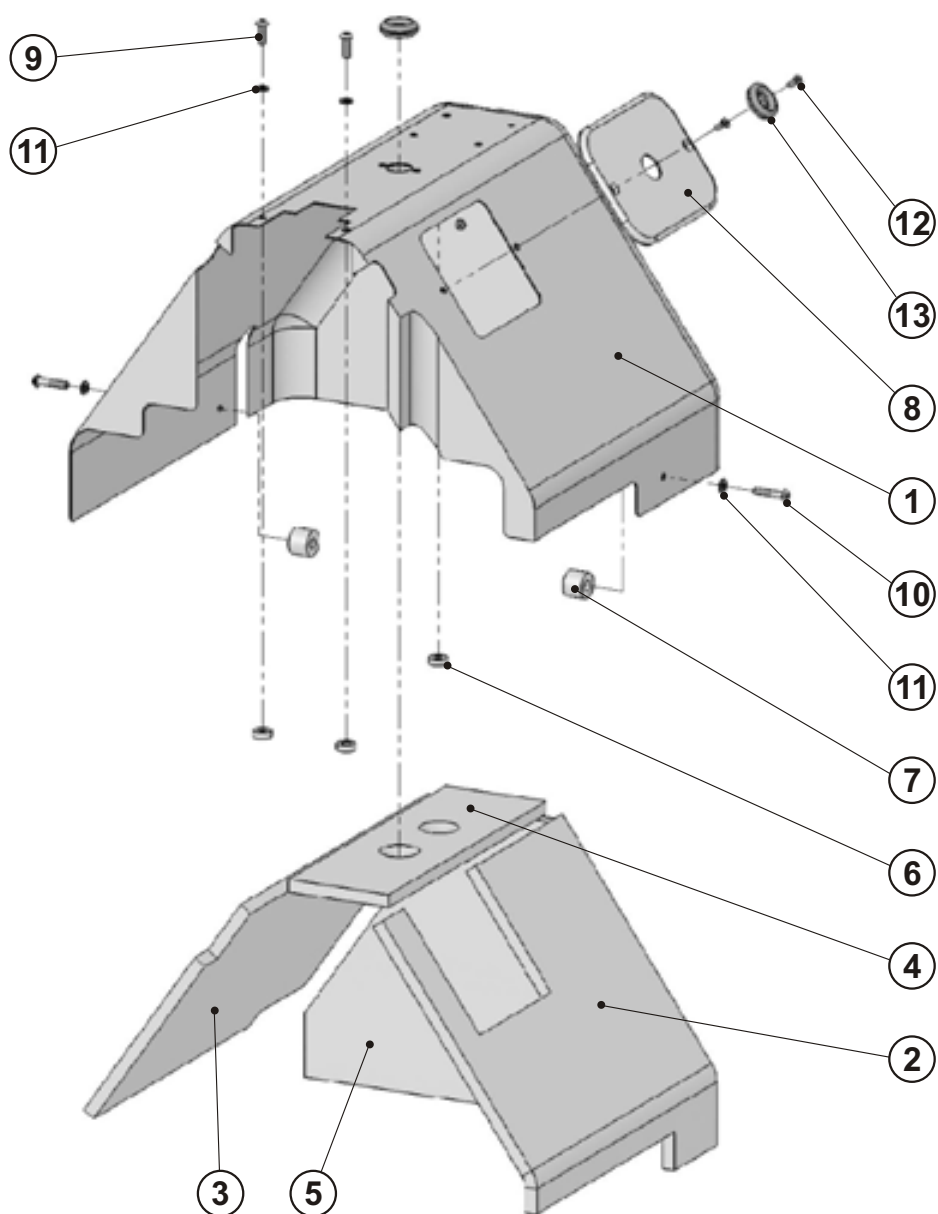
COVERS AND GUARDS ASSEMBLY



COVERS AND GUARDS ASSEMBLY

DET	PART NUMBER	DESCRIPTION	QTY.
01	04.9071.0.902	TABLE TOP ASSEMBLY ●●●	1
02	04.9071.0.903	TABLE ●●●	1
03	71.1261.3.035	PLATE	1
04	71.1570.0.033	COVER - HEAD - ASSEMBLY	1
05	71.1570.0.023	COVER - LOWER LOOPER	1
06	08.6646.3.016	SCREW 3-16	2
07	17.0095.1.272	RUBBER WASHER ●●●	8
08	17.0019.0.441	WASHER	4
09	08.6802.8.000	SPRING WASHER M8	4
10	08.6000.8.065	SCREW M8-65	4
11	08.6100.6.030	SCREW M6-30	3
12	71.1451.5.050	HOLDER	1
13	08.6000.4.010	SCREW M4-10	2
14	71.1570.0.037	RESERVOIR	1
15	71.1570.0.034	COVER	1
16	19.0014.6.412	DISTANCE NUT	1
17	08.6010.4.008	SCREW M4-8	3
18	08.6702.4.000	NUT M4	1
19	08.6832.4.000	WASHER M4	1
20	08.6646.4.050	SCREW 4x50	3
21	12.0008.6.901	BOX ●●●	1
22	71.1586.1.018	COVER	1
23	08.6000.4.006	SCREW M4-6	3
24	08.6850.4.000	WASHER M4	5

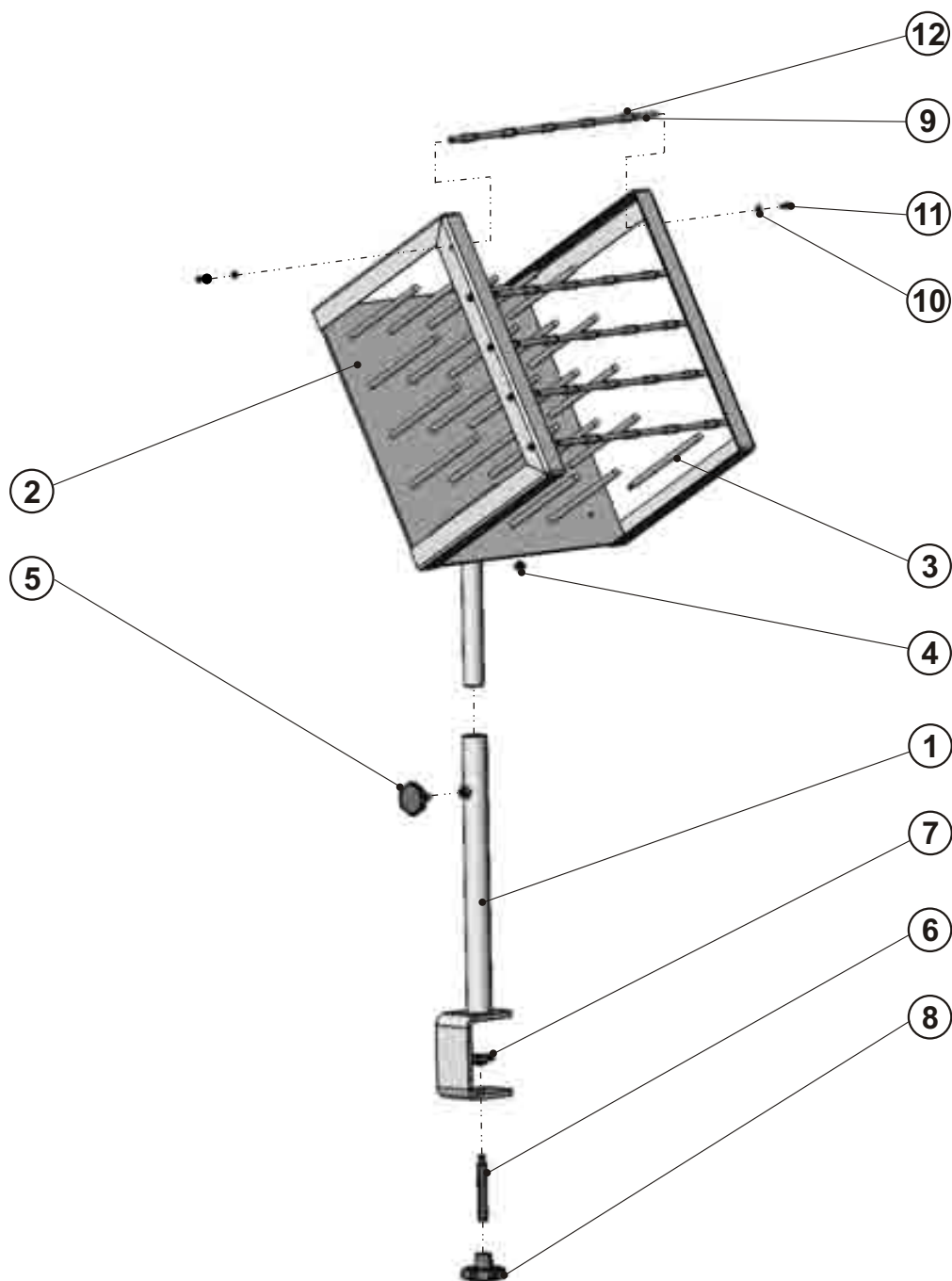
COVERS HEAD ASSEMBLY



COVERS HEAD ASSEMBLY

DET	PART NUMBER	DESCRIPTION	QTY.
01	71.1570.0.020	COVER - HEAD	1
02	71.1570.0.026	FOAM-SOUND SUPRESSOR	1
03	71.1570.0.027	FOAM-SOUND SUPRESSOR	1
04	71.1570.0.028	FOAM-SOUND SUPRESSOR	1
05	71.1570.0.029	FOAM-SOUND SUPRESSOR	1
06	71.1570.0.031	WASHER	3
07	71.1570.0.030	WASHER	2
08	71.1570.0.038	COVER	1
09	08.6202.5.016	SCREW M5-16	2
10	08.6202.5.025	SCREW M5-25	2
11	08.6852.5.000	WASHER 5,3	4
12	08.6100.4.010	SCREW M4-10	2
13	12.0008.4.737	BUSHING	2

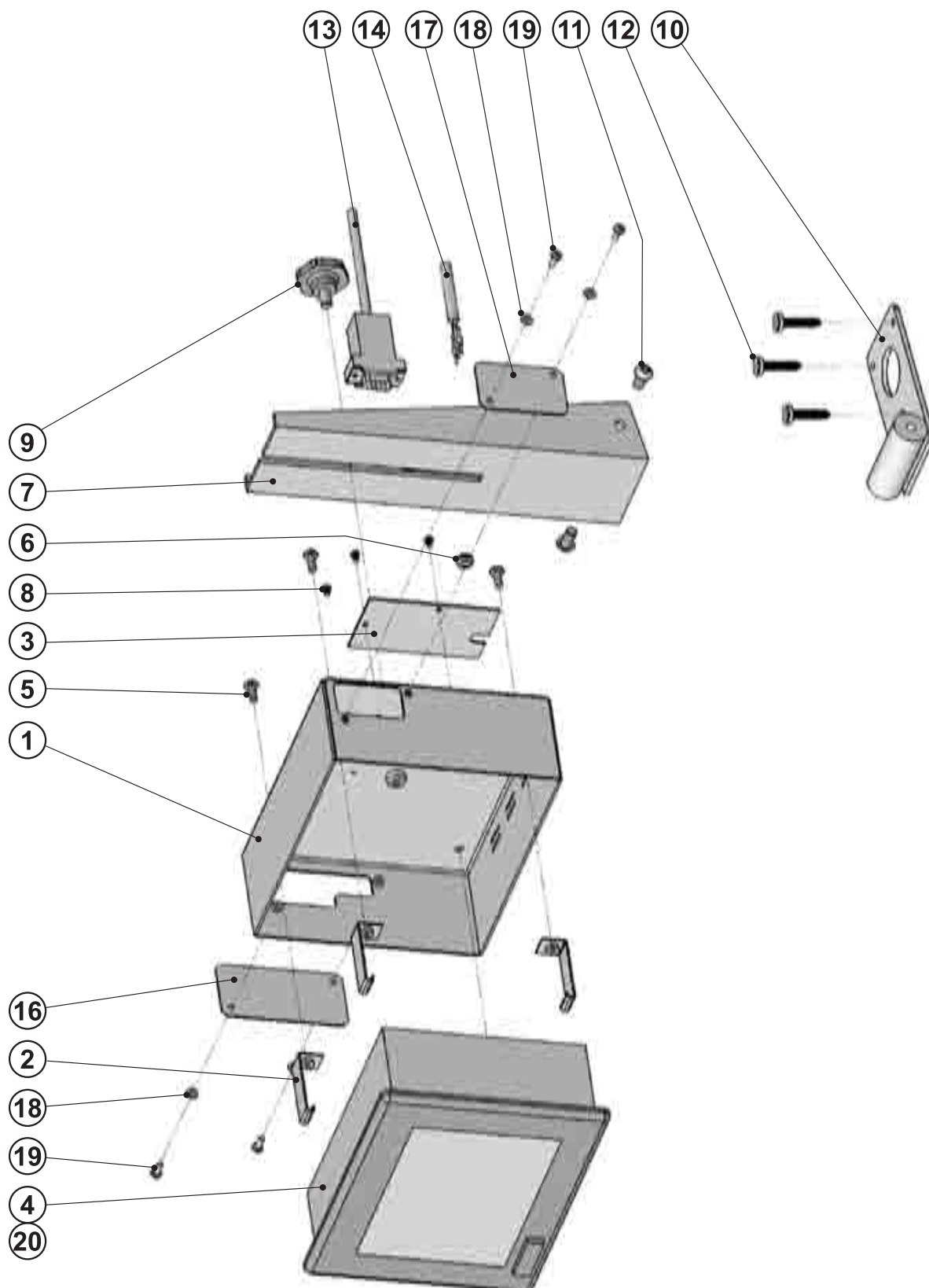
STAND THREAD



STAND THREAD

DET	PART NUMBER	DESCRIPTION	QTY.
01	71.1458.7.002	LEG	1
02	71.1458.7.003	PLATE ASSEMBLY	1
03	71.1151.1.054	BAR	25
04	08.6702.5.000	NUT M5	25
05	19.0014.7.003	SCREW-PANEL	1
06	08.6490.8.060	GRUB SCREW M8X60	1
07	12.0008.6.229	THRUST PAD LOW	1
08	12.0008.6.993	STAR GRIPS	1
09	71.1661.1.107	GUIDE	5
10	08.6802.3.000	SPRING WASHER M3	10
11	08.6012.3.008	SCREW M3-8	10
12	71.1661.1.108	STOP ●●●	25

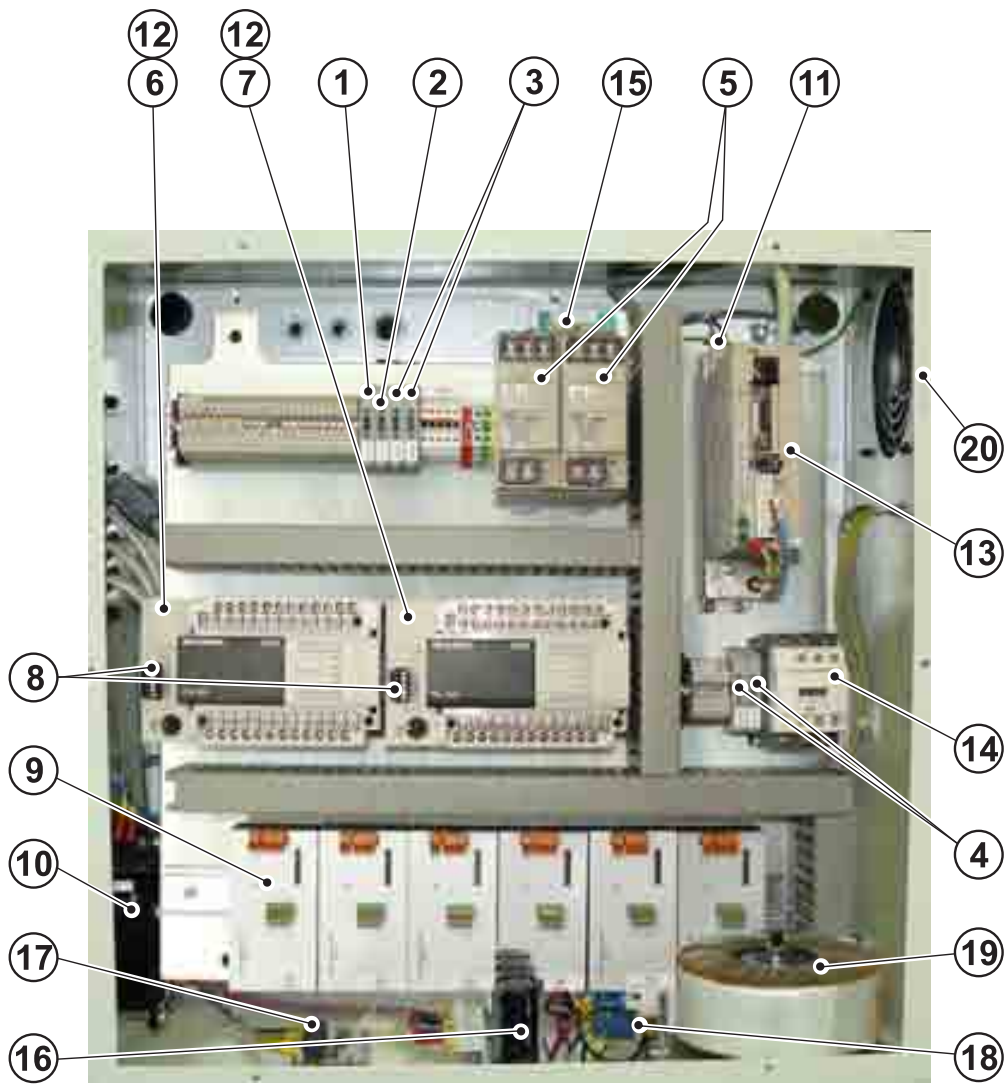
PANEL KIT GOT 1000



PANEL KIT GOT 1000

DET	PART NUMBER	DESCRIPTION	QTY.
01	71.1451.7.080	PANEL COVER GOT 1000	1
02	71.1451.7.081	PANEL HOLDER GOT 1000	4
03	24.0161.0.000	COVER	1
04	12.0010.4.118	DISPLAY GT1155-QSBD	1
05	08.6032.4.010	SCREW M4-10	4
06	12.0008.4.581	BUSHING	1
07	19.0083.7.002	PANEL STAND	1
08	08.6662.3.006	SCREW	3
09	19.0014.7.003	SCREW-PANEL	1
10	19.0005.0.013	PANEL STAND BASE	1
11	08.6202.6.012	SCREW M6-12	2
12	08.6663.5.025	SCREW	3
13	12.0008.4.821	DISPLAY CABLE FX-50DU-CAB0-1M	1
14	06.7100.0.041	CABLE DISPLAY POWER	1
15	12.0008.4.140	SPIRAL HOSE	0,5m
16	71.1451.7.082	COVER	1
17	71.1451.7.083	COVER	1
18	08.6852.3.000	WASHER M3	4
19	08.6032.3.008	SCREW M3-8	4
20	12.0010.4.113	BATTERY DISPLAY	1

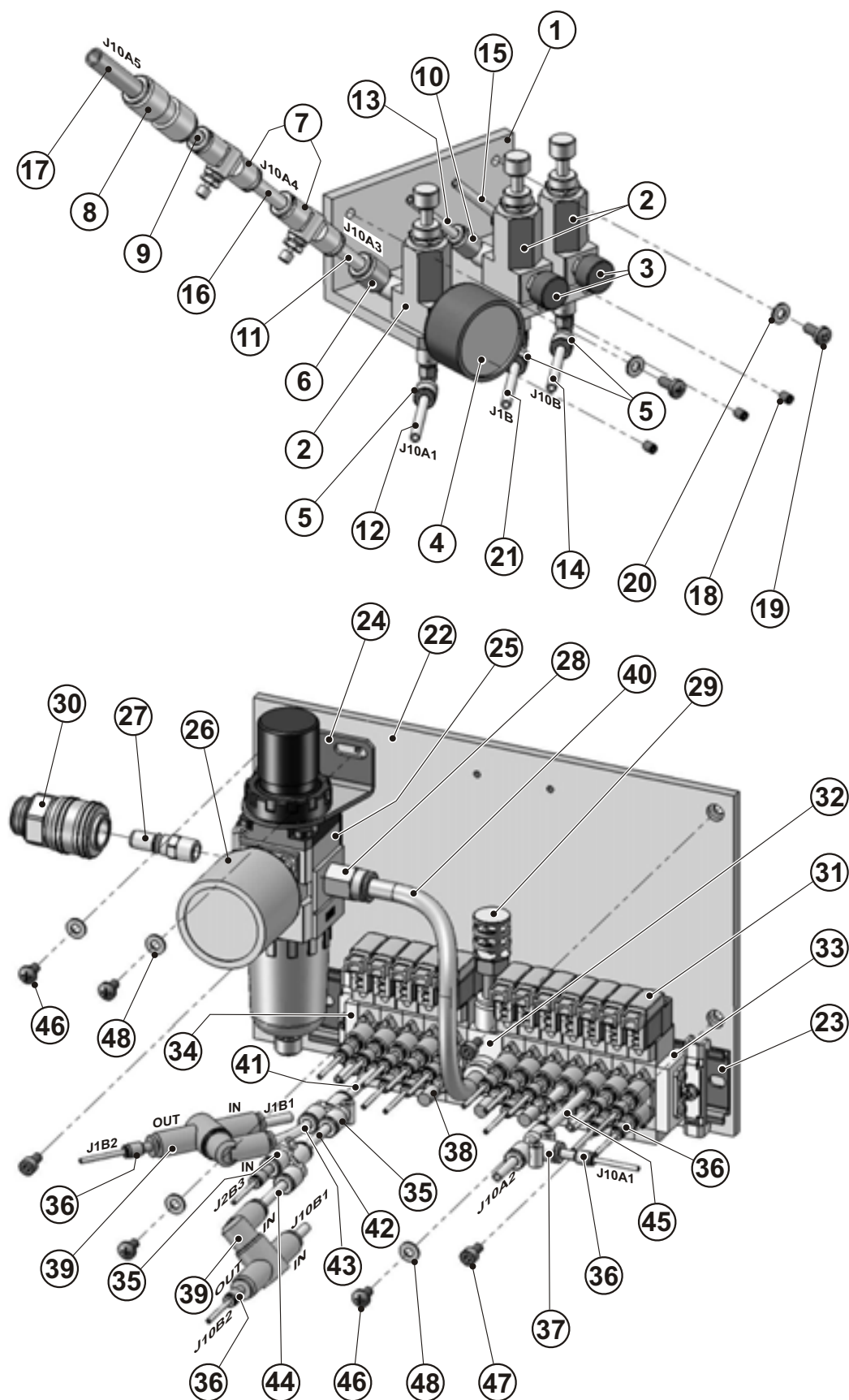
ELECTROBOX



ELECTROBOX

DET	PART NUMBER	DESCRIPTION	QTY.
01	12.0008.4.063	FUSE F1 T1A	1
02	12.0008.4.109	T5 A FUSE F2 T5A	1
03	12.0008.4.664	T10 A FUSE F3, F4 T10A	2
04	12.0008.4.664	T10 A FUSE F5, F6 T10A	2
05	12.0010.4.168	POWER GS1, GS2	2
06	71.8001.0.001	PCL-A	1
07	71.8001.0.002	PCL-B	1
08	12.0010.4.119	BLOCK RS 485	2
09	12.0008.4.898	DRIVER U1-U6	6
10	12.0008.4.682	FAN FAN EV1 230V	1
11	12.0010.4.251	FILTER Z1	1
12	12.0010.4.164	BATTERY PLC	2
13	71.8001.0.005	SERVODRIVE U10	1
14	12.0008.4.833	CONTACTOR KM1	1
15	06.7100.0.045	BRIDGE PE	1
16	12.0010.4.134	PLATE CB1	1
17	12.0010.4.136	PLATE TB2	1
18	12.0008.4.770	RECTIFIER DU1, DU2	2
19	12.0010.4.007	TOROID TRAFO GS3	1
20	71.1565.0.001	CONTROL BOX	1

KIT PNEU



KIT PNEU

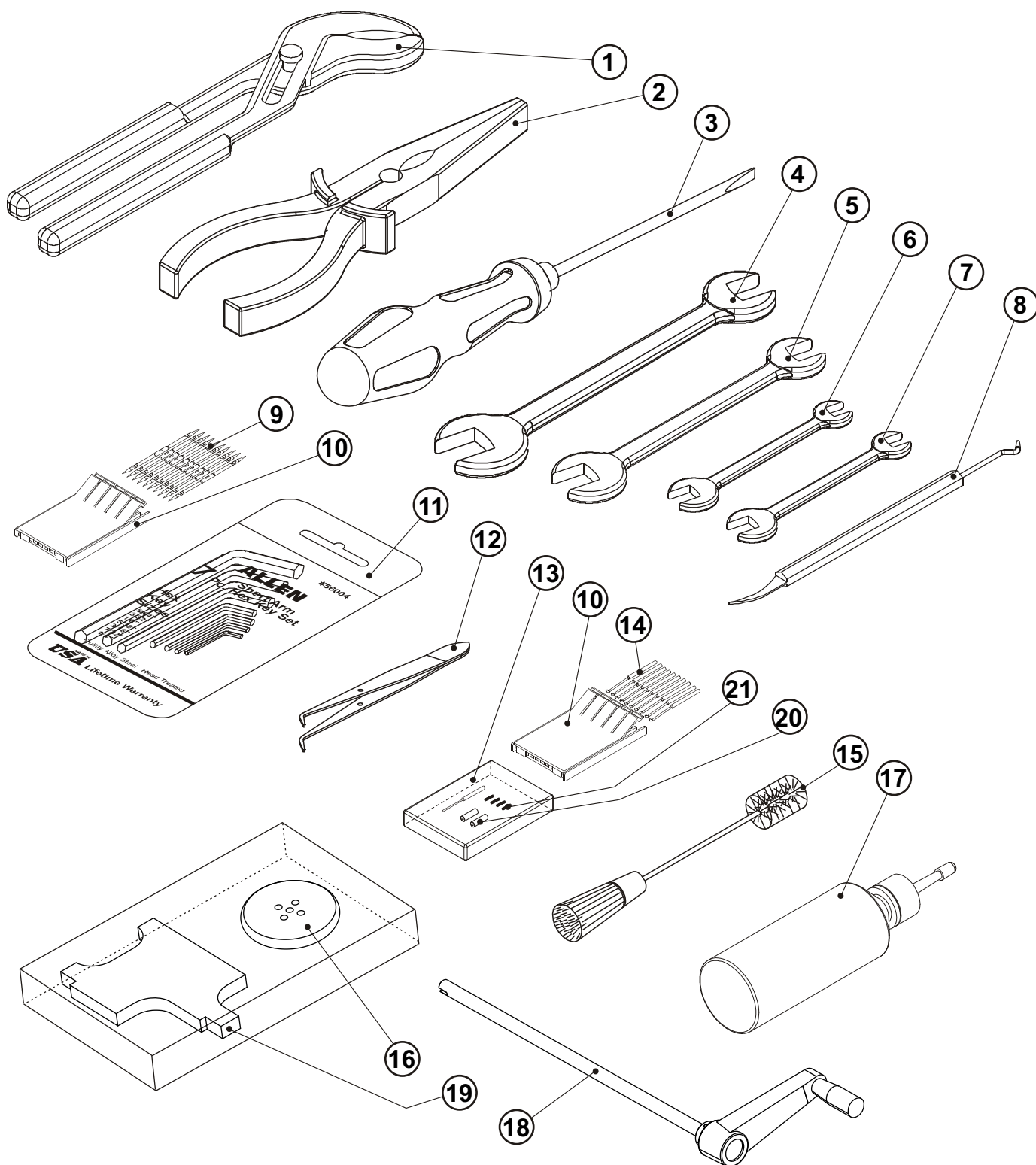
DET	PART NUMBER	DESCRIPTION	QTY.
01	71.1570.0.039	HOLDER	1
02	12.0008.3.615	REGULATOR	3
03	12.0008.3.785	GAUGE	2
04	12.0008.3.435	GAUGE	1
05	12.0008.3.411	CONNECTOR	3
06	12.0008.3.459	CONNECTOR	1
07	12.0010.3.010	THROTTLE VALVE	2
08	12.0010.3.011	CONNECTOR	1
09	12.0008.3.487	REDUCTION	1
10	12.0008.3.640	CONNECTOR	2
11	12.0008.3.415	AIR TUBING - J10A3	1
12	12.0008.3.416	AIR TUBING - J10A1	1
13	12.0008.3.416	AIR TUBING - J1B1	1
14	12.0008.3.416	AIR TUBING - J10B	1
15	12.0008.3.416	AIR TUBING - J10B1	1
16	12.0008.3.415	AIR TUBING - J10A4	1
17	12.0008.3.998	AIR TUBING - J10A5	1
18	08.6400.4.006	SCREW M4-6	3
19	08.6032.4.010	SCREW M4-10	2
20	08.6852.4.000	WASHER M4	2
21	12.0008.3.416	AIR TUBING - J1B	1
22	71.1570.0.040	PLATE	1
23	12.0010.3.002	DIN BAR	1
24	12.0008.3.659	HOLDER	1
25	12.0008.3.753	REGULATOR	1
26	12.0008.3.776	GAUGE	1
27	12.0008.3.420	CONNECTOR	1
28	12.0008.3.421	CONNECTOR	1
29	12.0008.3.484	SILENCER	1
30	12.0008.3.608	CONNECTOR	1
31	12.0008.3.482	VALVE	12
32	12.0008.3.479	BLOCK	1
33	12.0008.3.476	END PLATE	1
34	12.0008.3.478	END PLATE	1
35	12.0008.3.724	CONNECTOR	2
36	12.0008.3.861	CONNECTOR	19
37	12.0010.3.009	CONNECTOR	1
38	12.0008.3.426	PLUG	3
39	12.0008.3.899	LOGIC VALVE	2
40	12.0008.3.431	AIR TUBING - J0	1
41	12.0008.3.416	AIR TUBING - J2B	1
42	12.0008.3.416	AIR TUBING - J2B1	1
43	12.0008.3.416	AIR TUBING - J2B2	1
44	12.0008.3.416	AIR TUBING - J2B4	1
45	12.0008.3.416	AIR TUBING - J10A	1
46	08.6032.4.008	SCREW M4-8	4
47	08.6000.4.008	SCREW M4-8	3
48	08.6852.4.000	WASHER M4	4

Revised: 03/2015

E-mail: service@amfreece.cz; webside: www.amfreece.com

Phone: +420 582 309 146; Fax: +420 582 360 606

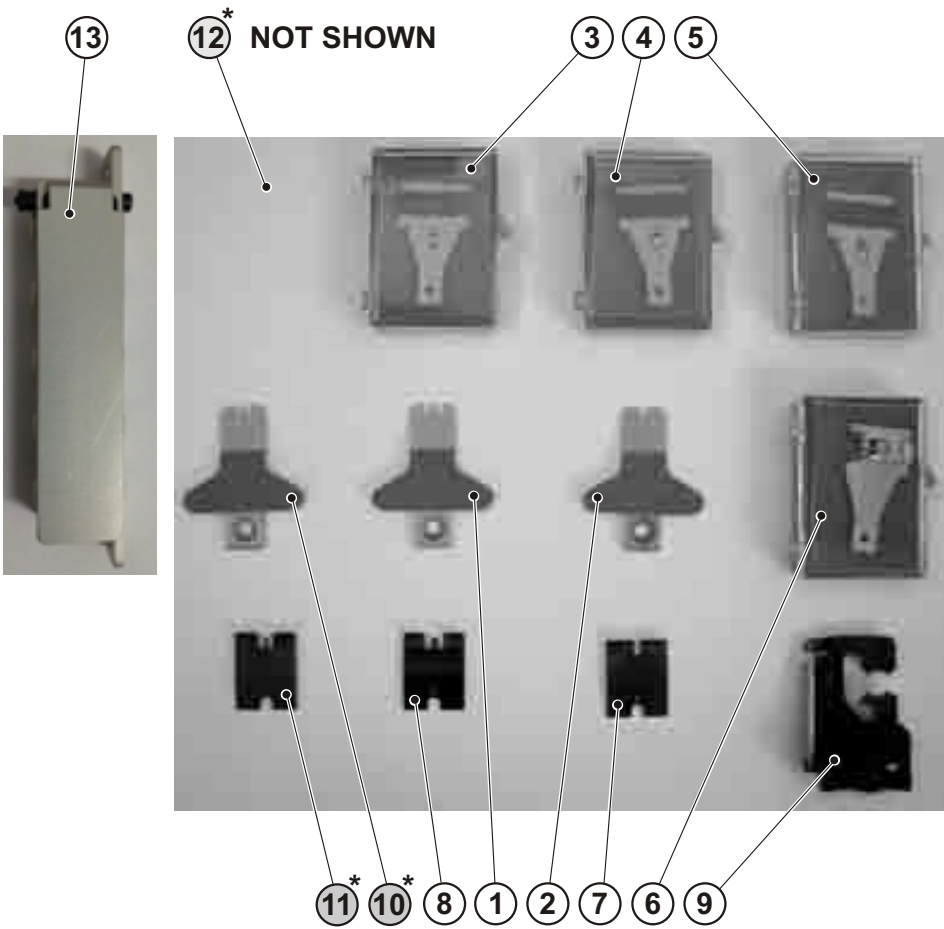
STANDARD ACCESSORIES - TOOLS



STANDARD ACCESSORIES - TOOLS

[illegible]

STANDARD ACCESSORIES



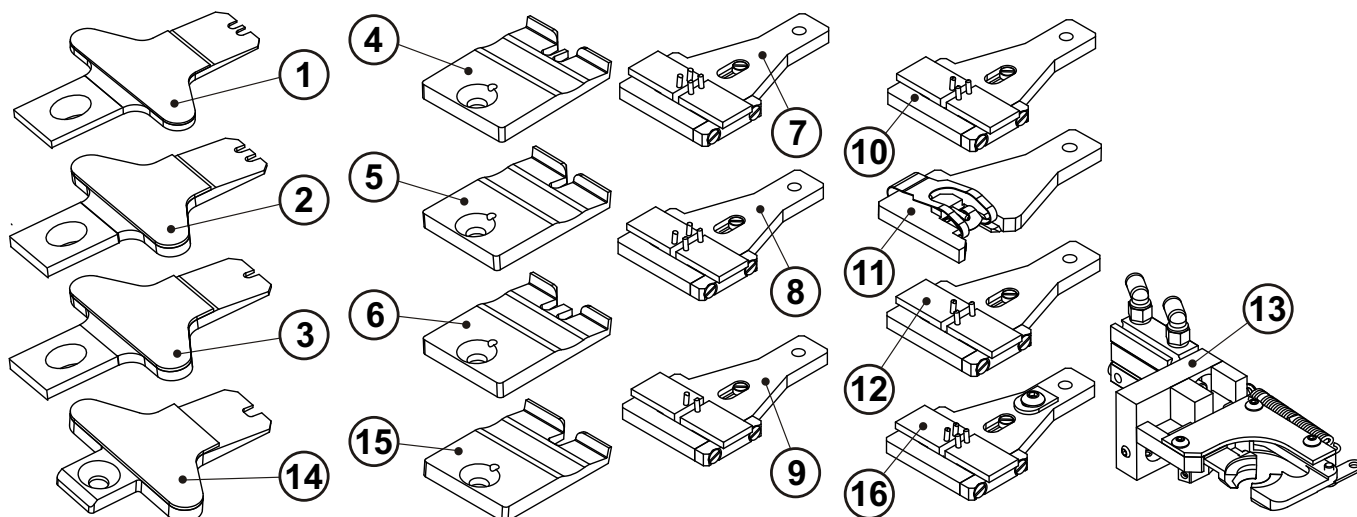
^{*} INCLUDED ONLY IN 03.3571.0.019

NUMBER OF MACHINES O EBS0005

STANDARD ACCESSORIES

[illegible]

STANDARD ACCESSORIES - OVERVIEW



Button Type	Hole/ Stitch Spacing (mm)	Button Holder	Tongue	Pucker Pin
	3,0-6,0 mm	03.5571.0.015	03.5571.0.012	71.1453.8.030
	3,0-4,5 mm	03.5571.0.016	03.5571.0.010	71.1453.8.032
	4,5-6,0 mm	03.5571.0.018	03.5571.0.011	71.1453.8.031
	2,6-3,3 mm	03.5571.0.024	03.5571.0.010	71.1453.8.032
	3,0-4,5 mm	03.5571.0.013	03.5571.0.010	71.1453.8.032
	4,5-6,0 mm	03.5571.0.014	03.5571.0.011	71.1453.8.031
	0 mm	03.5571.0.017	03.5571.0.012	71.1453.8.030
	3,0-4,5 mm		03.5571.0.010	71.1453.8.032
	4,5-6,0 mm		03.5571.0.011	71.1453.8.031
	3,0-4,5 mm	03.5571.0.013	03.5571.0.023	71.1453.8.033

STANDARD ACCESSORIES - OVERVIEW

DET	PART NUMBER	DESCRIPTION	QTY.
01	03.5571.0.020	TONGUE (4/3-4,5)	1
02	03.5571.0.021	TONGUE (4/4,5-6)	1
03	03.5571.0.022	TONGUE (SHANK BUTTON)	1
04	71.1453.8.032	PUCKER PIN (4-HOLE)	1
05	71.1453.8.030	PUCKER PIN (2-HOLE)	1
06	71.1453.8.031	PUCKER PIN (4/4,5-6)	1
07	03.5571.0.013	BUTTON HOLDER (4/3-4,5)	1
08	03.5571.0.014	BUTTON HOLDER (4/4,5-6)	1
09	03.5571.0.015	BUTTON HOLDER (2/3-6)	1
10	03.5571.0.016	BUTTON HOLDER (3/3-4,5)	1
11	03.5571.0.017	BUTTON HOLDER (BUTTON SHANK)	1
12	03.5571.0.018	BUTTON HOLDER (3/4,5-6)	1
13	03.5571.0.005	BUTTON CHUCK JAW ASSEMBLY	1
14	03.5571.0.023	TONGUE "V"	1
15	71.1453.8.033	PUCKER PIN "V"	1
16	03.5571.0.024	BUTTON HOLDER (4/2,6 - 3,3)	1

INDEX

PART NUMBER	PAGE	DET	QTY	PART NUMBER	PAGE	DET	QTY	PART NUMBER	PAGE	DET	QTY
22965006	3-19	6	4	03.5571.0.013	3-65	7	1	07.6321.0.020	3-21	35	1
24971069	3-5	6	1	03.5571.0.014	3-63	3	1				
24971495	3-13	20	1	03.5571.0.014	3-65	8	1	08.6000.0.025			
24973041	3-15	11	1	03.5571.0.015	3-63	4	1	08.6000.0.025	3-3	13	4
26913004	3-61	2	1	03.5571.0.015	3-65	9	1	08.6000.0.030	3-3	28	4
				03.5571.0.016	3-63	5	1	08.6000.3.005	3-15	17	1
31111009	3-19	7	2	03.5571.0.016	3-65	10	1	08.6000.3.005	3-31	30	10
31264001	3-19	16	2	03.5571.0.017	3-63	6	1	08.6000.3.005	3-43	23	4
31412001	3-19	14	2	03.5571.0.017	3-65	11	1	08.6000.3.008	3-21	30	2
31413002	3-11	7	2	03.5571.0.018	3-65	12	1	08.6000.3.008	3-31	11	11
31566008	3-19	5	2	03.5571.0.019	3-63	0	1	08.6000.3.010	3-31	12	6
31593007	3-19	15	2	03.5571.0.020	3-63	10*	1	08.6000.3.010	3-35	26	1
31674025	3-19	11	2	03.5571.0.020	3-65	1	1	08.6000.3.012	3-15	14	2
31695011	3-19	13	2	03.5571.0.021	3-63	1	1	08.6000.3.012	3-27	13	2
31697002	3-19	18	1	03.5571.0.021	3-65	2	1	08.6000.3.014	3-31	13	4
31697003	3-19	3	1	03.5571.0.022	3-63	2	1	08.6000.3.018	3-33	12	2
31815017	3-11	8	2	03.5571.0.022	3-65	3	1	08.6000.3.030	3-41	6	1
35131002	3-19	17	2	03.5571.0.023	3-33	7	1	08.6000.4.006	3-49	23	3
35511071	3-19	4	2	03.5571.0.023	3-65	14	1	08.6000.4.008	3-3	25	10
36341035	3-11	6	1	03.5571.0.024	3-65	16	1	08.6000.4.008	3-13	5	2
36523021	3-19	1	2	03.5571.0.026	3-63	13	1	08.6000.4.008	3-29	12	2
36523022	3-19	2	2					08.6000.4.008	3-47	7	1
36531010	3-19	9	2	04.9071.0.000	3-3	7	1	08.6000.4.008	3-59	47	3
36531010	3-61	21	4	04.9071.0.902	3-49	1	1	08.6000.4.010	3-13	22	4
36532021	3-19	12	2	04.9071.0.903	3-49	2	1	08.6000.4.010	3-29	7	6
36532022	3-19	10	2					08.6000.4.010	3-45	7	2
36771021	3-19	8	2	05.0090.1.000	3-61	17	1	08.6000.4.010	3-49	13	2
36771021	3-61	20	2					08.6000.4.012	3-43	7	2
37213001	3-7	16	1	06.0120.0.000	3-35	25	1	08.6000.4.015	3-47	3	2
37771023	3-61	19	1	06.7100.0.010	3-43	28	2	08.6000.4.016	3-21	18	4
				06.7100.0.011	3-13	28	1	08.6000.4.016	3-31	35	2
49910018	3-61	8	1	06.7100.0.012	3-31	25	1	08.6000.4.020	3-7	35	2
49910019	3-61	13	1	06.7100.0.013	3-29	2	1	08.6000.4.030	3-21	40	2
				06.7100.0.014	3-31	26	1	08.6000.5.002	3-5	9	1
00200038	3-19	22	1	06.7100.0.016	3-13	29	1	08.6000.5.010	3-21	37	5
00200038	3-61	9	10	06.7100.0.023	3-31	27	1	08.6000.5.010	3-29	24	1
				06.7100.0.024	3-25	23	1	08.6000.5.012	3-3	15	2
01.6551.0.000	3-35	24	10	06.7100.0.029	3-7	43	1	08.6000.5.012	3-7	21	2
01.7447.0.001	3-39	6	20	06.7100.0.030	3-25	22	1	08.6000.5.012	3-23	51	4
01.7447.0.001	3-41	5	10	06.7100.0.031	3-31	28	1	08.6000.5.016	3-13	14	4
01.7447.1.000	3-35	23	10	06.7100.0.032	3-31	29	1	08.6000.5.020	3-23	52	2
				06.7100.0.041	3-55	14	1	08.6000.5.020	3-29	21	2
03.0018.0.000	3-61	4	1	06.7100.0.045	3-57	15	1	08.6000.5.020	3-43	31	6
03.5571.0.004	3-63	0	1	06.7100.0.050	3-33	11	1	08.6000.5.022	3-25	10	1
03.5571.0.005	3-63	9	1					08.6000.5.025	3-7	30	2
03.5571.0.005	3-65	13	1	07.6321.0.001	3-21	39	1	08.6000.5.030	3-21	44	2

INDEX

PART NUMBER	PAGE	DET	QTY	PART NUMBER	PAGE	DET	QTY	PART NUMBER	PAGE	DET	QTY
08.6000.5.030	3-43	30	2	08.6200.3.006	3-15	10	4	08.6420.3.005	3-15	9	2
08.6000.6.016				08.6200.3.006	3-31	14	7	08.6420.4.010	3-19	20	2
08.6000.6.016	3-25	09	2	08.6200.3.006	3-33	14	2	08.6420.4.012	3-19	21	2
08.6000.6.025	3-13	7	2	08.6200.3.008	3-15	21	1	08.6432.0.200	3-17	6	1
08.6000.8.012	3-21	21	4	08.6200.3.008	3-31	15	1	08.6490.8.060	3-53	6	1
08.6000.8.020	3-17	8	11	08.6200.3.008	3-35	34	4	08.6646.3.016	3-49	6	2
08.6000.8.020	3-43	4	2	08.6200.3.020	3-35	33	4	08.6646.4.050	3-49	20	3
08.6000.8.030	3-21	23	4	08.6200.4.010	3-25	30	4	08.6662.3.006	3-55	8	3
08.6000.8.050	3-3	22	4	08.6200.4.010	3-35	27	8	08.6663.5.025	3-55	12	3
08.6000.8.065	3-3	20	4	08.6200.4.016	3-35	32	9	08.6700.3.000	3-35	31	2
08.6000.8.065	3-49	10	4	08.6200.5.008	3-7	26	4	08.6700.3.000	3-41	7	2
08.6010.4.008	3-49	17	3	08.6200.5.010	3-27	12	1	08.6700.4.000	3-25	42	1
08.6012.2.003	3-29	16	1	08.6202.3.008	3-35	36	2	08.6700.4.000	3-33	18	1
08.6012.3.008	3-53	11	10	08.6202.4.006	3-35	39	2	08.6700.5.000	3-13	27	2
08.6017.8.016	3-17	17	1	08.6202.4.008	3-7	25	3	08.6700.5.000	3-43	21	2
08.6032.3.008	3-55	19	4	08.6202.4.010	3-35	38	12	08.6702.3.000	3-15	20	1
08.6032.3.035	3-15	16	2	08.6202.4.010	3-39	8	8	08.6702.4.000	3-7	19	1
08.6032.4.008	3-59	46	4	08.6202.5.016	3-51	9	2	08.6702.4.000	3-39	10	1
08.6032.4.010	3-55	5	4	08.6202.5.025	3-51	10	2	08.6702.4.000	3-49	18	1
08.6032.4.010	3-59	19	2	08.6202.6.012	3-25	07	4	08.6702.5.000	3-5	4	1
08.6050.5.010	3-25	19	2	08.6202.6.012	3-55	11	2	08.6702.5.000	3-53	4	25
08.6100.3.008	3-7	17	11	08.6310.4.006	3-29	6	1	08.6702.6.000	3-13	18	2
08.6100.3.008	3-13	23	1	08.6400.3.005	3-15	8	1	08.6702.8.000	3-3	21	8
08.6100.3.008	3-25	24	1	08.6400.4.004	3-5	5	2	08.6710.4.000	3-7	36	1
08.6100.4.008	3-13	6	2	08.6400.4.004	3-25	31	1	08.6710.4.000	3-25	34	3
08.6100.4.008	3-25	20	1	08.6400.4.004	3-33	15	2	08.6710.4.000	3-37	6	1
08.6100.4.008	3-29	8	2	08.6400.4.004	3-35	40	6	08.6710.5.000	3-19	23	2
08.6100.4.010	3-35	29	4	08.6400.4.004	3-43	8	8	08.6712.4.000	3-19	19	4
08.6100.4.010	3-37	4	2	08.6400.4.005	3-7	20	3	08.6712.4.000	3-31	19	2
08.6100.4.010	3-39	9	4	08.6400.4.005	3-13	9	1	08.6712.9.000	3-3	12	4
08.6100.4.010	3-43	19	8	08.6400.4.005	3-15	15	2	08.6722.6.000	3-13	15	1
08.6100.4.010	3-51	12	2	08.6400.4.006	3-17	14	4	08.6800.4.000	3-13	21	4
08.6100.4.012	3-7	23	2	08.6400.4.006	3-27	14	1	08.6800.4.000	3-29	9	8
08.6100.4.020	3-31	37	2	08.6400.4.006	3-31	16	1	08.6800.5.000	3-13	13	4
08.6100.5.008	3-11	4	4	08.6400.4.006	3-59	18	3	08.6800.5.000	3-29	10	2
08.6100.5.008	3-25	33	1	08.6400.4.008	3-25	32	1	08.6800.5.000	3-43	29	8
08.6100.5.010	3-43	10	2	08.6400.4.018	3-31	17	2	08.6800.6.000	3-13	25	2
08.6100.5.016	3-25	41	2	08.6400.4.018	3-33	17	1	08.6800.8.000	3-3	19	8
08.6100.6.030	3-49	11	3	08.6400.4.040	3-37	5	1	08.6802.0.000	3-3	27	4
08.6102.2.008	3-29	17	2	08.6400.5.005	3-31	18	2	08.6802.3.000	3-21	28	2
08.6102.2.008	3-45	10	2	08.6400.5.005	3-43	13	1	08.6802.3.000	3-53	10	10
08.6112.4.055	3-21	22	4	08.6400.6.006	3-17	9	4	08.6802.4.000	3-3	24	10
08.6200.3.004				08.6400.6.006	3-43	16	3	08.6802.4.000	3-21	20	6
08.6200.3.004	3-29	23	1	08.6400.6.008	3-43	14	2	08.6802.4.000	3-45	8	2
				08.6420.3.005				08.6802.4.000	3-47	6	1
								08.6802.5.000	3-21	36	6

INDEX

PART NUMBER	PAGE	DET	QTY	PART NUMBER	PAGE	DET	QTY	PART NUMBER	PAGE	DET	QTY
08.6802.5.000	3-27	11	1	12.0008.3.416	3-59	13	1	12.0008.3.749	3-27	19	1
				12.0008.3.416	3-59	14	1	12.0008.3.749	3-27	20	1
08.6802.8.000				12.0008.3.416	3-59	15	1	12.0008.3.749	3-31	38	1
08.6802.8.000	3-17	16	4	12.0008.3.416	3-59	21	1	12.0008.3.749	3-31	39	1
08.6802.8.000	3-49	9	4	12.0008.3.416	3-59	41	1	12.0008.3.749	3-33	19	1
08.6832.4.000	3-49	19	1	12.0008.3.416	3-59	42	1	12.0008.3.749	3-33	20	1
08.6842.6.000	3-13	33	2	12.0008.3.416	3-59	43	1	12.0008.3.749	3-35	46	1
08.6850.3.000	3-33	16	4	12.0008.3.416	3-59	44	1	12.0008.3.749	3-35	47	1
08.6850.3.000	3-35	30	8	12.0008.3.416	3-59	45	1	12.0008.3.749	3-39	14	1
08.6850.3.000	3-41	8	2	12.0008.3.420	3-59	27	1	12.0008.3.749	3-39	15	1
08.6850.3.000	3-43	24	4	12.0008.3.421	3-59	28	1	12.0008.3.753	3-59	25	1
08.6850.4.000	3-13	31	4	12.0008.3.426	3-59	38	3	12.0008.3.765	3-5	8	1
08.6850.4.000	3-29	5	5	12.0008.3.431	3-59	40	1	12.0008.3.776	3-59	26	1
08.6850.4.000	3-31	36	2	12.0008.3.435	3-59	4	1	12.0008.3.785	3-59	3	2
08.6850.4.000	3-35	28	15	12.0008.3.459	3-59	6	1	12.0008.3.806	3-7	41	1
08.6850.4.000	3-49	24	5	12.0008.3.476	3-59	33	1	12.0008.3.806	3-25	12	1
08.6850.5.000	3-13	26	4	12.0008.3.478	3-59	34	1	12.0008.3.808	3-25	13	1
08.6850.5.000	3-25	43	2	12.0008.3.479	3-59	32	1	12.0008.3.809	3-5	7	1
08.6850.5.000	3-43	17	11	12.0008.3.482	3-33	10	1	12.0008.3.809	3-27	8	2
08.6850.6.000	3-13	32	2	12.0008.3.482	3-59	31	12	12.0008.3.809	3-31	22	2
08.6850.8.000	3-23	47	1	12.0008.3.484	3-59	29	1	12.0008.3.809	3-35	43	2
08.6852.0.000	3-3	26	8	12.0008.3.487	3-59	9	1	12.0008.3.815	3-7	42	4
08.6852.3.000	3-35	37	2	12.0008.3.573	3-63	12*	1	12.0008.3.815	3-25	15	2
08.6852.3.000	3-55	18	4	12.0008.3.608	3-59	30	1	12.0008.3.815	3-39	13	2
08.6852.4.000	3-23	46	4	12.0008.3.609	3-7	31	1	12.0008.3.826	3-15	18	2
08.6852.4.000	3-35	35	16	12.0008.3.615	3-59	2	3	12.0008.3.826	3-33	9	2
08.6852.4.000	3-39	11	10	12.0008.3.628	3-45	14	2	12.0008.3.861	3-59	36	19
08.6852.4.000	3-45	9	2	12.0008.3.631	3-15	12	1	12.0008.3.862	3-45	13	1
08.6852.4.000	3-47	5	1	12.0008.3.631	3-35	42	1	12.0008.3.863	3-45	15	1
08.6852.4.000	3-59	20	2	12.0008.3.640	3-59	10	2	12.0008.3.865	3-39	12	1
08.6852.4.000	3-59	48	4	12.0008.3.659	3-59	24	1	12.0008.3.876	3-45	16	1
08.6852.5.000	3-21	45	2					12.0008.3.881	3-31	21	1
08.6852.5.000	3-27	10	1	12.0008.3.700				12.0008.3.899	3-59	39	2
08.6852.5.000	3-51	11	4	12.0008.3.700	3-13	11	1	12.0008.3.998	3-35	48	1
08.6852.8.000	3-3	23	4	12.0008.3.724	3-59	35	2	12.0008.3.998	3-59	17	1
08.6852.8.000	3-21	19	4	12.0008.3.735	3-7	32	1				
				12.0008.3.738	3-31	20	1	12.0008.4.063			
12.0008.3.410				12.0008.3.749	3-5	10	1	12.0008.4.063	3-57	1	1
12.0008.3.410	3-27	7	1	12.0008.3.749	3-9	46	1	12.0008.4.109	3-57	2	1
12.0008.3.411	3-59	5	3	12.0008.3.749	3-9	47	1	12.0008.4.140	3-55	15	0,5m
12.0008.3.415	3-45	19	1	12.0008.3.749	3-9	48	1	12.0008.4.581	3-55	6	1
12.0008.3.415	3-59	11	1	12.0008.3.749	3-9	49	1	12.0008.4.664	3-57	3	2
12.0008.3.415	3-59	16	1	12.0008.3.749	3-15	22	1	12.0008.4.664	3-57	4	2
12.0008.3.416	3-45	17	1	12.0008.3.749	3-15	23	1	12.0008.4.682	3-57	10	1
12.0008.3.416	3-45	18	1	12.0008.3.749	3-25	45	1	12.0008.4.737	3-51	13	2
12.0008.3.416	3-59	12	1	12.0008.3.749	3-25	46	1	12.0008.4.770	3-57	18	2

INDEX

PART NUMBER	PAGE	DET	QTY	PART NUMBER	PAGE	DET	QTY	PART NUMBER	PAGE	DET	QTY
12.0008.4.777	3-43	32	1	12.1010.0.316	3-45	12	1	22.0182.0.000	3-7	29	1
12.0008.4.821	3-55	13	1	12.1010.0.820	3-3	16	2				
12.0008.4.833	3-57	14	1	12.1010.2.019	3-13	8	1	24.0161.0.000	3-55	3	1
12.0008.4.898	3-57	9	6	12.1010.2.020	3-7	22	1	24.2076.0.000	3-27	16	1
12.0008.6.005	3-61	3	1	12.1014.0.510	3-25	06	4				
12.0008.6.108	3-61	5	1	12.1016.0.002	3-7	45	2	70.3721.3.002	3-61	14	10
12.0008.6.109	3-61	6	1	12.1045.0.003	3-7	28	1				
12.0008.6.111	3-61	7	1	12.1045.0.003	3-35	44	1	71.1001.4.460			
12.0008.6.119	3-61	1	1	12.1045.0.004	3-7	27	1	71.1001.4.460	3-25	21	1
12.0008.6.215	3-61	12	1	12.1045.0.004	3-25	14	1	71.1001.4.461	3-27	18	1
12.0008.6.228	3-7	18	1	12.1045.0.004	3-27	4	1	71.1121.1.011	3-15	7	2
12.0008.6.229	3-53	7	1	12.2070.1.004	3-35	41	4	71.1129.1.026	3-25	5	1
12.0008.6.520	3-3	9	4	12.2080.0.012	3-23	50	2	71.1129.1.029	3-13	17	1
12.0008.6.523	3-3	10	4	12.2099.2.000	3-17	7	2	71.1135.2.006	3-13	12	1
12.0008.6.524	3-3	11	4	12.3010.0.009	3-7	38	1	71.1142.2.047	3-43	12	1
12.0008.6.817	3-39	7	20	12.3010.0.009	3-37	7	1	71.1143.1.086	3-61	16	1
12.0008.6.817	3-41	9	10	12.3010.0.018	3-35	45	2	71.1151.1.054	3-53	3	25
12.0008.6.901	3-49	21	1	12.3010.0.019	3-45	11	1	71.1151.1.055	3-45	5	1
12.0008.6.968	3-61	10	2	12.4030.0.001	3-21	8	1	71.1159.3.013	3-13	19	1
12.0008.6.975	3-61	15	1	12.4030.0.412	3-21	5	2	71.1161.1.071	3-27	5	2
12.0008.6.993	3-53	8	1	12.5050.2.015	3-21	16	1	71.1161.1.072	3-27	6	1
12.0010.3.002	3-59	23	1	12.5050.2.016	3-21	15	1	71.1164.1.041	3-15	6	1
12.0010.3.009	3-59	37	1	12.5050.2.017	3-21	14	1	71.1164.2.016	3-27	2	1
12.0010.3.010	3-59	7	2	12.8000.1.034	3-7	44	1	71.1169.6.006	3-25	17	1
12.0010.3.011	3-59	8	1	15.1128.0.050	3-21	42	1	71.1171.4.017	3-29	13	2
12.0010.4.007	3-57	19	1					71.1172.2.026	3-11	12	1
12.0010.4.025	3-11	11	1	17.0017.2.041	3-7	37	1	71.1172.3.007	3-17	3	2
12.0010.4.036	3-47	8	1	17.0017.2.041	3-37	8	1	71.1172.8.011	3-21	3	1
12.0010.4.051	3-47	2	1	17.0019.0.441	3-3	29	8	71.1172.8.012	3-23	53	1
12.0010.4.093	3-21	31	1	17.0019.0.441	3-49	8	4	71.1173.7.040	3-21	4	1
12.0010.4.093	3-29	19	1	17.0026.0.219	3-29	20	2	71.1174.1.012	3-7	14	1
12.0010.4.093	3-43	27	2	17.0027.4.085	3-21	33	2	71.1174.1.015	3-7	13	1
12.0010.4.113	3-55	20	1	17.0043.6.351	3-21	25	2	71.1174.3.004	3-11	5	1
12.0010.4.115	3-47	1	1	17.0043.6.351	3-25	08	5	71.1175.4.011	3-15	19	1
12.0010.4.116	3-47	0	1	17.0045.1.062	3-17	10	2	71.1177.2.035	3-17	13	2
12.0010.4.118	3-55	4	1	17.0095.1.272	3-3	18	12	71.1178.4.003	3-21	12	1
12.0010.4.119	3-57	8	2	17.0095.1.272	3-49	7	8	71.1178.4.004	3-21	38	1
12.0010.4.134	3-57	16	1	17.0095.1.273	3-3	8	4	71.1178.4.006	3-21	13	1
12.0010.4.136	3-57	17	1					71.1178.4.007	3-21	17	1
12.0010.4.164	3-57	12	2	19.0005.0.013	3-55	10	1	71.1178.4.008	3-21	34	1
12.0010.4.168	3-57	5	2	19.0014.6.412	3-49	16	1	71.1178.4.010	3-21	32	1
12.0010.4.177	3-21	1	1	19.0014.7.003	3-53	5	1	71.1179.3.001	3-21	11	2
12.0010.4.251	3-57	11	1	19.0014.7.003	3-55	9	1	71.1182.3.002	3-43	15	1
				19.0016.3.406	3-25	40	1	71.1182.3.003	3-43	6	1
12.1010.0.004				19.0082.3.433	3-3	17	3	71.1184.6.001	3-21	10	1
12.1010.0.004	3-3	14	2	19.0083.7.002	3-55	7	1	71.1184.8.019	3-43	3	4

INDEX

PART NUMBER	PAGE	DET	QTY	PART NUMBER	PAGE	DET	QTY	PART NUMBER	PAGE	DET	QTY
71.1187.2.018	3-29	4	1	71.1325.5.047	3-21	26	1	71.1546.1.112	3-35	11	1
71.1187.4.023	3-5	2	1	71.1325.5.048	3-13	30	1	71.1546.1.113	3-35	12	1
71.1195.5.015	3-7	12	1	71.1325.5.049	3-31	7	1	71.1546.1.114	3-35	13	1
				71.1325.5.050	3-31	8	1	71.1546.1.115	3-35	14	1
71.1222.3.057				71.1325.5.051	3-31	9	1	71.1546.1.116	3-35	15	2
71.1222.3.057	3-13	4	1	71.1325.5.052	3-31	10	1	71.1546.1.118	3-35	16	1
71.1222.6.011	3-43	1	1	71.1325.5.053	3-11	10	1	71.1546.1.119	3-35	17	1
71.1223.6.100	3-3	3	1	71.1325.5.054	3-31	32	1	71.1546.1.120	3-35	18	1
71.1223.6.101	3-3	4	1	71.1325.5.056	3-33	6	1	71.1546.1.121	3-35	19	1
71.1223.6.102	3-43	20	1	71.1325.5.058	3-31	40	2	71.1546.1.123	3-35	20	1
71.1223.6.103	3-21	27	1	71.1325.5.059	3-31	41	2	71.1546.1.131	3-37	1	1
71.1223.6.104	3-21	29	1	71.1332.4.001	3-13	3	1	71.1546.1.132	3-37	2	1
71.1223.6.105	3-21	43	1	71.1344.1.002	3-17	11	1	71.1546.1.133	3-37	3	1
71.1223.6.106	3-23	48	1	71.1344.1.003	3-17	12	1	71.1546.1.143	3-39	2	2
71.1223.6.107	3-23	49	1	71.1345.5.006	3-27	3	1	71.1546.1.144	3-39	3	1
71.1225.5.042	3-5	3	1	71.1451.5.050	3-49	12	1	71.1546.1.145	3-39	4	2
71.1225.5.042	3-27	9	1	71.1451.5.096	3-13	10	1	71.1546.1.146	3-39	5	2
71.1225.5.042	3-31	4	1	71.1451.5.108	3-47	4	1	71.1546.1.148	3-39	1	2
71.1237.2.075	3-31	1	1	71.1451.7.080	3-55	1	1	71.1546.1.150	3-41	1	1
71.1237.2.076	3-27	1	1	71.1451.7.081	3-55	2	4	71.1546.1.151	3-41	2	1
71.1237.2.078	3-33	4	1	71.1451.7.082	3-55	16	1	71.1546.1.152	3-41	3	1
71.1241.8.083	3-7	1	1	71.1451.7.083	3-55	17	1	71.1546.1.153	3-41	4	1
71.1241.8.084	3-7	33	1	71.1453.8.030	3-63	7	1				
71.1241.8.085	3-7	34	1	71.1453.8.030	3-65	5	1	71.1552.1.048			
71.1242.8.036	3-7	2	1	71.1453.8.031	3-63	8	1	71.1552.1.048	3-17	1	2
71.1253.8.027	3-3	2	1	71.1453.8.031	3-65	6	1	71.1552.1.049	3-17	5	1
71.1261.3.035	3-49	3	1	71.1453.8.032	3-25	18	1	71.1552.1.070	3-17	15	1
71.1273.5.093	3-43	18	2	71.1453.8.032	3-63	11*	1	71.1552.8.008	3-31	2	1
71.1273.9.139	3-7	9	1	71.1453.8.032	3-65	4	1	71.1552.8.011	3-33	1	1
71.1273.9.139	3-25	11	1	71.1453.8.033	3-33	8	1	71.1554.1.065	3-15	1	1
71.1276.6.056	3-43	9	1	71.1453.8.033	3-65	15	1	71.1557.4.044	3-7	4	1
71.1276.9.191	3-29	1	1	71.1458.7.002	3-53	1	1	71.1565.0.001	3-57	20	1
71.1313.2.211	3-21	24	1	71.1458.7.003	3-53	2	1	71.1565.3.031	3-3	5	1
71.1319.2.002	3-61	18	1	71.1463.5.017	3-11	2	2	71.1565.3.032	3-3	6	1
71.1321.1.038	3-5	1	1	71.1488.1.006	3-7	39	1	71.1570.0.020	3-51	1	1
71.1325.1.016	3-43	5	1	71.1515.1.043	3-11	9	2	71.1570.0.023	3-49	5	1
71.1325.1.076	3-29	14	1	71.1546.1.101	3-35	1	1	71.1570.0.026	3-51	2	1
71.1325.1.077	3-29	15	1	71.1546.1.102	3-35	2	1	71.1570.0.027	3-51	3	1
71.1325.1.078	3-29	18	1	71.1546.1.103	3-35	3	1	71.1570.0.028	3-51	4	1
71.1325.1.082	3-29	22	1	71.1546.1.104	3-35	4	1	71.1570.0.029	3-51	5	1
71.1325.2.045	3-11	1	2	71.1546.1.105	3-35	5	2	71.1570.0.030	3-51	7	2
71.1325.2.056	3-13	1	1	71.1546.1.106	3-35	6	2	71.1570.0.031	3-51	6	3
				71.1546.1.107	3-35	7	1	71.1570.0.032	3-7	24	1
71.1325.5.045				71.1546.1.108	3-35	8	5	71.1570.0.033	3-49	4	1
71.1325.5.045	3-43	22	1	71.1546.1.109	3-35	9	1	71.1570.0.034	3-49	15	1
71.1325.5.046	3-43	25	1	71.1546.1.111	3-35	10	1	71.1570.0.037	3-49	14	1

INDEX

PART NUMBER	PAGE	DET	QTY	PART NUMBER	PAGE	DET	QTY	PART NUMBER	PAGE	DET	QTY
71.1570.0.038	3-51	8	1	71.1664.1.087	3-25	28	1				
71.1570.0.039	3-59	1	1	71.1664.1.088	3-25	29	1				
71.1570.0.040	3-59	22	1	71.1664.1.090	3-25	25	1				
71.1577.8.058	3-15	3	1	71.1664.1.201	3-25	01	1				
71.1586.1.017	3-7	8	1	71.1664.1.202	3-25	02	1				
71.1586.1.018	3-49	22	1	71.1665.1.017	3-25	35	1				
71.1587.6.007	3-7	3	1	71.1665.1.018	3-25	03	1				
71.1622.5.012	3-21	6	2	71.1665.1.019	3-25	36	1				
71.1622.5.025	3-21	7	1	71.1665.1.020	3-25	37	1				
71.1634.0.012	3-31	6	2	71.1665.1.021	3-25	38	1				
71.1634.1.146	3-21	2	1	71.1665.1.022	3-25	39	1				
71.1651.6.019	3-21	9	1	71.1666.1.026	3-15	2	1				
71.1651.8.030	3-17	4	2	71.1666.6.006	3-43	2	2				
71.1651.8.068	3-15	13	1	71.1666.6.007	3-43	11	1				
71.1651.8.070	3-31	5	1	71.1666.6.008	3-43	26	1				
71.1651.8.074	3-31	3	2	71.1669.1.014	3-17	2	2				
71.1651.8.076	3-31	31	1	71.1671.2.025	3-21	41	1				
71.1651.8.084	3-17	18	1	71.1677.0.005	3-13	16	2				
71.1651.8.088	3-33	3	1	71.1712.4.212	3-45	1	1				
71.1651.8.090	3-33	5	1	71.1721.1.111	3-27	17	1				
71.1651.8.091	3-33	2	1	71.1721.1.117	3-27	15	1				
71.1651.8.092	3-31	33	1	71.1721.1.134	3-13	24	1				
71.1651.8.093	3-33	13	1	71.1723.1.024	3-11	3	2				
71.1651.8.095	3-31	23	1	71.1784.1.038	3-15	4	1				
71.1651.8.096	3-31	24	1	71.1784.1.039	3-15	5	1				
				71.1784.1.040	3-45	6	1				
71.1652.0.004				71.6132.1.017	3-3	1	1				
71.1652.0.004	3-29	3	1	71.6280.0.004	3-25	44	2				
71.1652.0.006	3-29	11	1	71.6482.0.005	3-31	34	1				
71.1661.1.101	3-13	2	1	71.8001.0.001	3-57	6	1				
71.1661.1.104	3-45	2	1	71.8001.0.002	3-57	7	1				
71.1661.1.105	3-45	3	1	71.8001.0.005	3-57	13	1				
71.1661.1.106	3-45	4	1								
71.1661.1.107	3-53	9	5	84.0003.0.390	3-61	11	1				
71.1661.1.108	3-53	12	25								
71.1661.8.041	3-7	10	1								
71.1661.8.044	3-7	40	1								
71.1663.1.027	3-7	5	1								
71.1663.1.029	3-7	6	1								
71.1664.1.014	3-7	11	1								
71.1664.1.017	3-7	15	1								
71.1664.1.018	3-7	7	1								
71.1664.1.079	3-25	04	1								
71.1664.1.081	3-25	16	1								
71.1664.1.085	3-25	26	1								
71.1664.1.086	3-25	27	1								