

Rumoldi

CATALOGO PEZZI DI RICAMBIO

SPARE PARTS CATALOGUE — ERSATZTEILELISTE

CATALOGUE RECHANGES — CATALOGO REPUESTOS

963/1

SVOLGITORE AUTOMATICO
AUTOMATIC UNWINDER
DEROULEUR AUTOMATIQUE

n. 107

CAT. N. 652892300 - 8/73

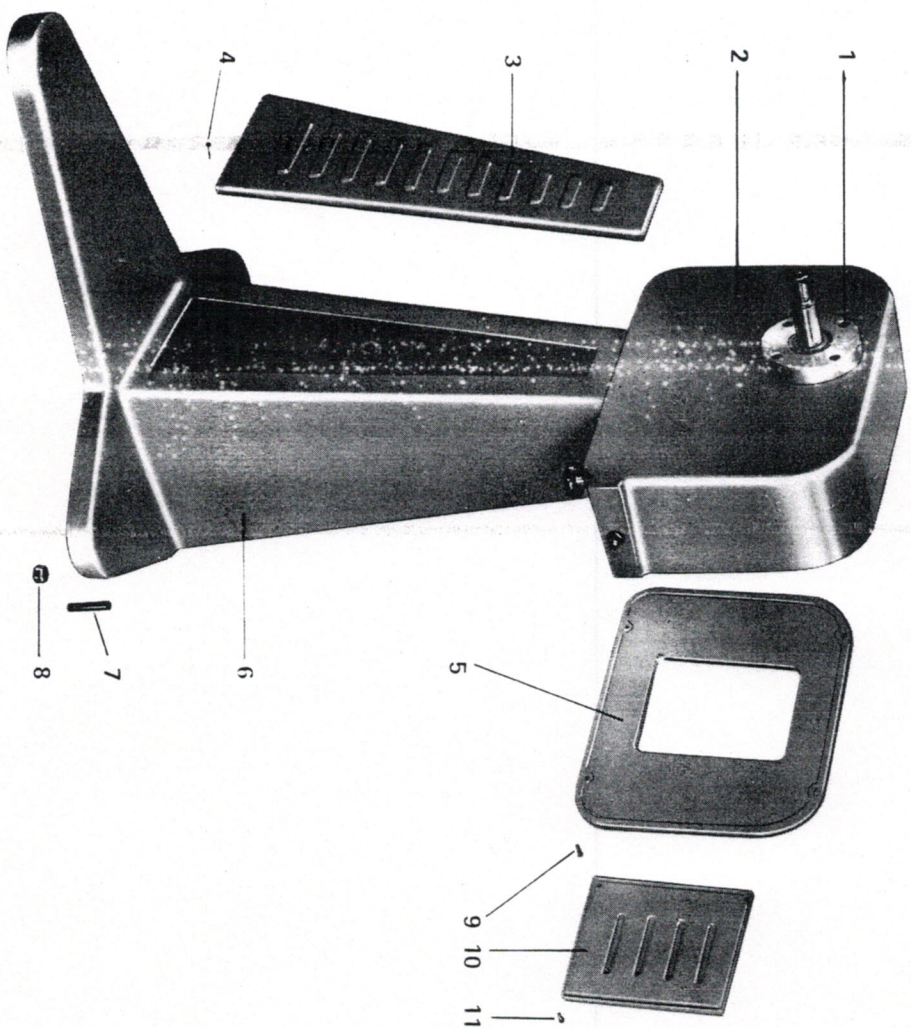


Fig. N. Abb. N.	Part. N. Piece N. Bestell N. Pieza N.	Qt. Anzahl	DESCRIZIONE	DESCRIPTION	DESCRIPTION	BENENNUNG	DESCRIPCION
1	RPS-963/008	4	vite 8MAx30 TCE	screw	vis		
2	RPS-963/2	1	testa	head	tête		
3	RPS-963/5	1	carter anteriore	front cover	carter avant		
4	RPS-963/001	4	vite 5MAx20 TCE	screw	vis		
5	RPS-963/3	1	carter protezione posteriore	rear cover	carter arrière		
6	RPS-963/1	1	colonna	column	colonne		
7	RPS-963/0060	3	grano VCE 12MAx50	screw	vis		
8	RPS-963/0061	3	dado 12MA	nut	écrou		
9	RPS-963/0036	4	vite 6MAx25 TCE	screw	vis		
10	RPS-963/4	1	carter posteriore	rear cover	carter arrière		
11	RPS-963/0021	4	vite 4MAx20 TCE	screw	vis		

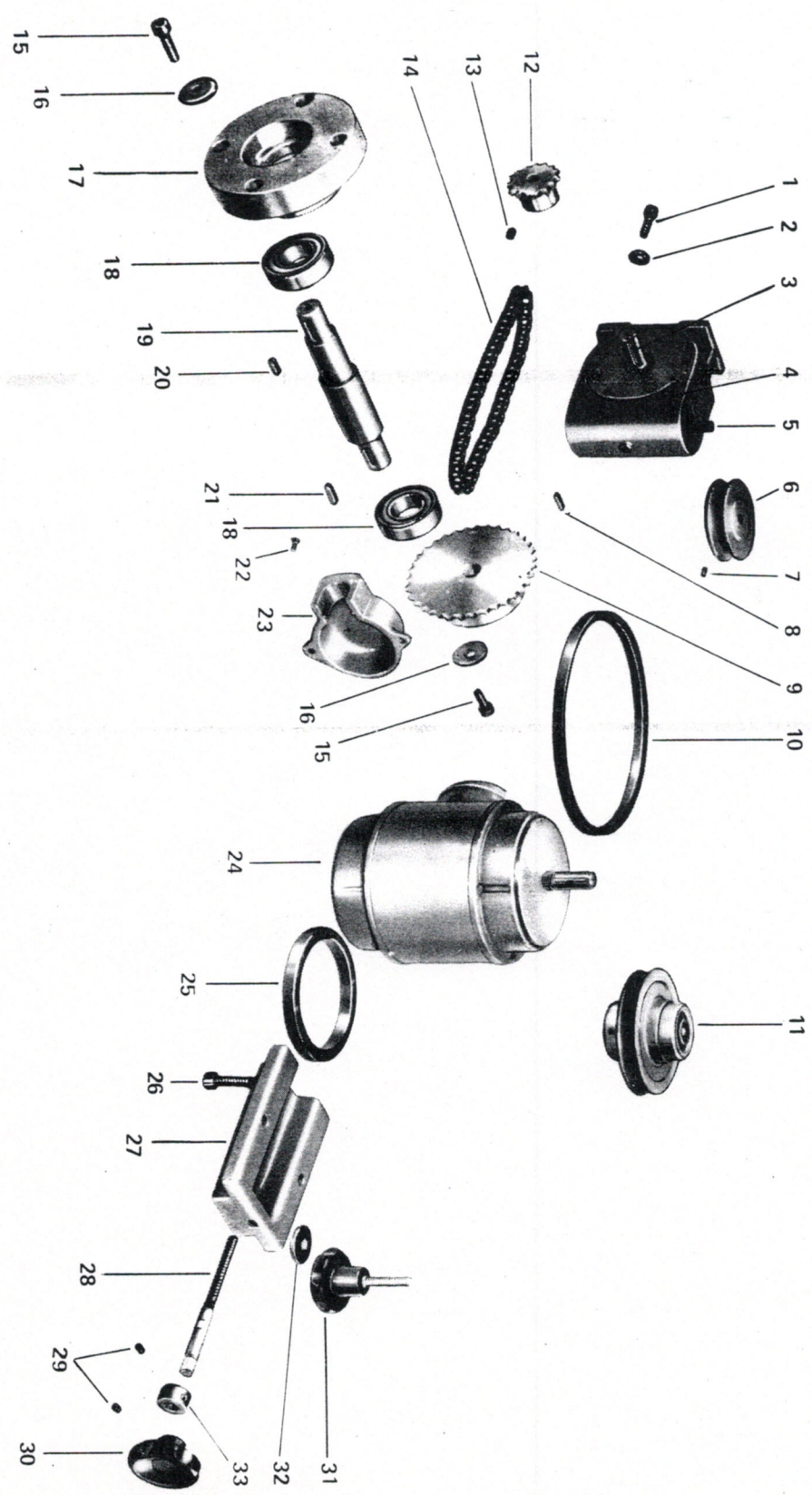
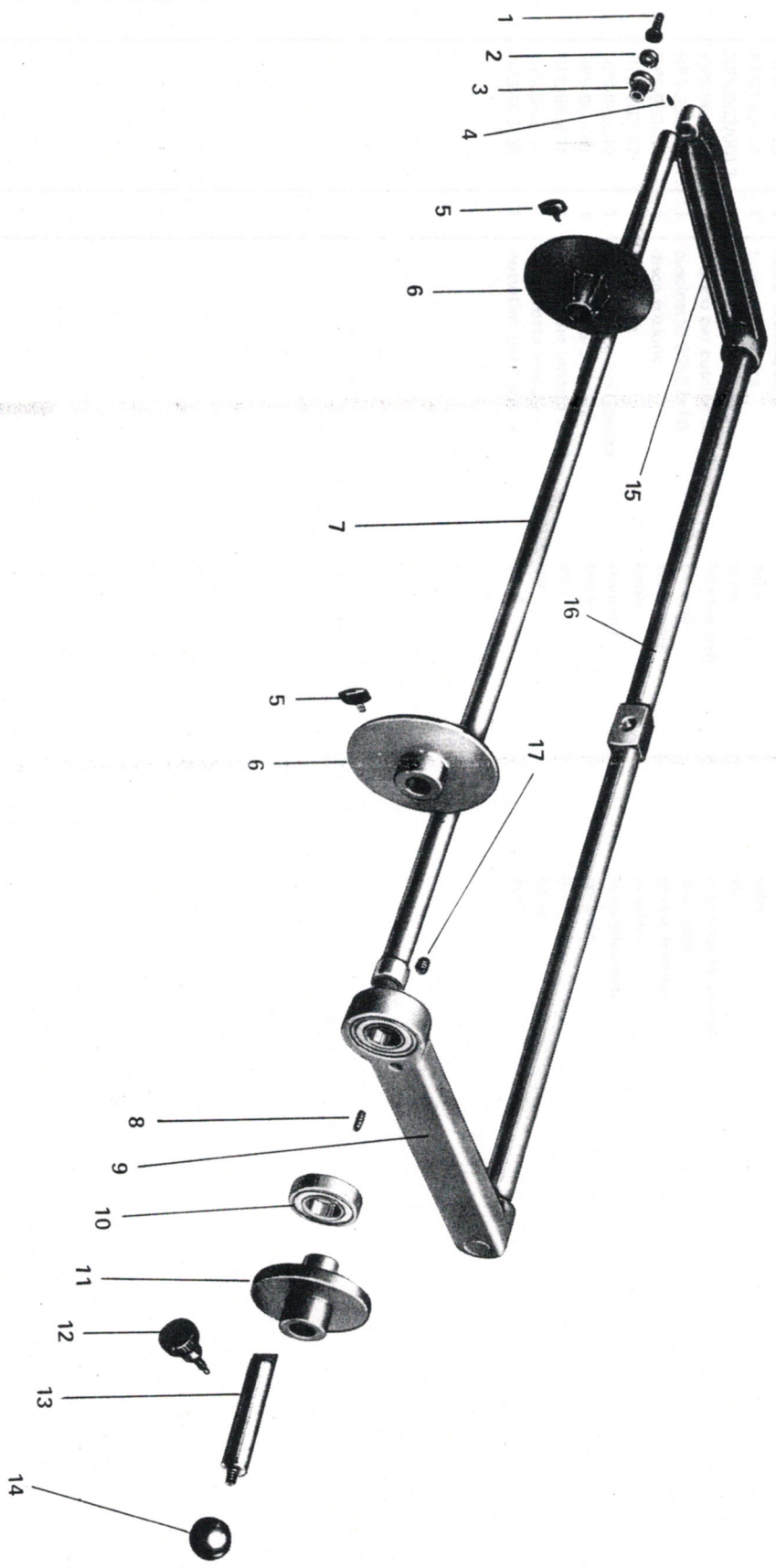


Fig. N. Abb. N.	Part. N. Pezce N. Bestell N. Piazza N.	Qt. Anzahl	DESCRIZIONE	DESCRIPTION	DESCRIPTION	BENENNUNG	DESCRIPCION
1	RPS-963/0036	4	vite 6MAx25 TCE	screw	vis		
2	RPS-963/19	4	rondella 6x20	washer	rondelle		
3	RPS-963/15	1	albero uscita riduttore	shaft	arbre		
4	RPS-963/14	1	riduttore (rapporto 1 : 40)	reduction unit	réducteur		
5	RPS-963/16	1	albero entrata riduttore	shaft	arbre		
6	RPS-963/18	1	puleggia entrata riduttore	pulley	poulie		
7	RPS-963/0011	1	grano 8MAx10	screw	vis		
8	RPS-963/17	1	chiavetta 5x20 per puleggia	key for pulley	clé pour poulie		
9	RPS-963/11	1	pignone passo 3/8 z 35	pinion	pignon		
10	RPS-963/20	1	cinghia trapezoidale A-23-650	belt	courroie		
11	RPS-963/21	1	puleggia motore	pulley	poulie		
12	RPS-963/13	1	pignone passo 3/8 z 15	pinion	pignon		
13	RPS-963/0011	1	grano 8MAx10	screw	vis		
14	RPS-963/12	1	catena passo 3/8-maglie 28	chain	chaînette		
15	RPS-963/008	2	vite 8MAx30 TCE	screw	vis		
16	RPS-963/7	2	rondella 30x4x8	washer	rondelle		
17	RPS-963/6	1	flangia	flange	flasque		
18	RPS-963/1A	2	cuscinetto 25x52x15	bearing	coussinet		
19	RPS-963/8	1	albero pignone	pinion shaft	arbre pignon		
20	RPS-963/9	1	chiavetta 6x15	key	clé		
21	RPS-963/10	1	chiavetta per pignone 6x20	key for pinion	clé pour pignon		
22	RPS-963/0032	2	vite 4MAx15 TCE	screw	vis		
23	RPS-963/23	1	calotta protezione morsetti	cover for motor junction box	carter protection bornes moteur		
24	RPS-963/22	1	motore HP 0,25	motor	moteur		
25	RPS-963/24	1	anello distanziale	spacer ring	anneau entretoise		
26	RPS-963/0062	2	vite 8MAx35 TCE	screw	vis		
27	RPS-963/25	1	staffa per motore	bracket for motor	bride pour moteur		
28	RPS-963/27	1	perno filettato	threaded pin	pivot fileté		
29	RPS-963/0052	2	grano 8MAx8	screw	vis		
30	RPS-963/29	1	volantino	handwheel	volant		
31	RPS-963/26	1	volantino con prigioniero	handwheel with threaded pin	volant avec pivot fileté		
32	RPS-963/7	1	rondella 30x4x8,5	washer	rondelle		
33	RPS-963/28	1	anello distanziale	spacer ring	anneau entretoise		



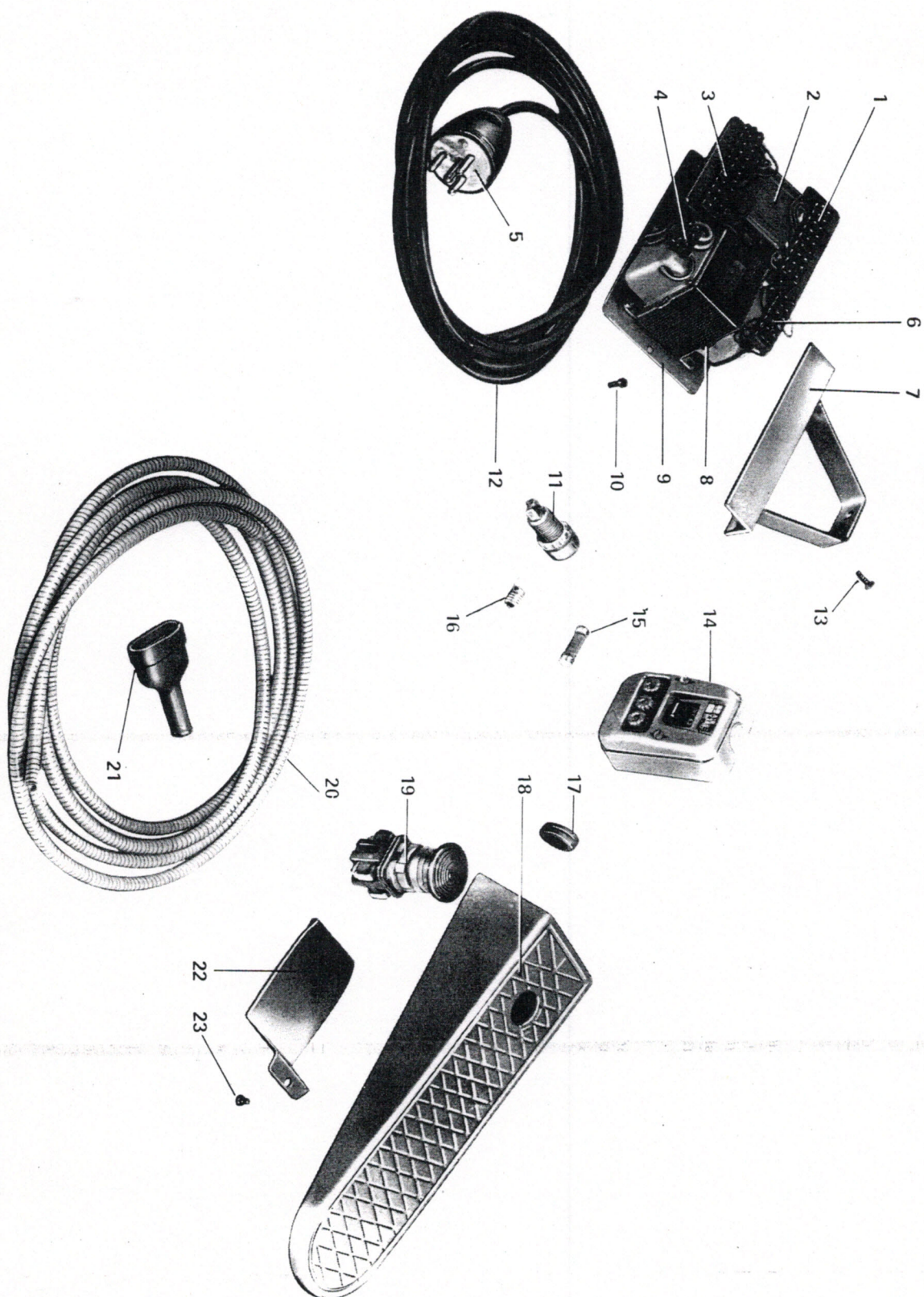


Fig. N. Abb. N.	Part. N. Piece N. Bestell N. Pieza N.	Qt. Anzahl	DESCRIZIONE	DESCRIPTION	DESCRIPTION	BENENNUNG	DESCRIPCION
1	RPS-963/45	1	morsettiera a 9 morsetti	junction box	plaque à bornes		
2	RPS-963/44	1	teleruttore	electromagnetic switch	térupteur		
3	RPS-963/46	1	morsettiera a 11 morsetti	junction box	plaque à bornes		
4	RPS-963/48	1	morsettiera a 3 morsetti	junction box	plaque à bornes		
5	RPS-963/56	1	spina 3x15A	pin	goupille		
6	RPS-963/47	1	morsettiera a 6 morsetti	junction box	plaque à bornes		
7	RPS-963/50	1	supporto piastra impianto elettrico	support	support		
8	RPS-963/43	1	trasformatore 30W	transformer	transformeur		
9	RPS-963/49	1	piastra impianto elettrico	plate	plaque		
10	RPS-963/0051	2	vite 4MAx12 TCE	screw	vis		
11	RPS-963/54	1	portalamada	lampe holder	porte lampe		
12	RPS-963/55	1	cavo elettrico a 4 capi	electric cable	cable électrique		
13	RPS-963/0063	2	vite 5MAx15 TPS	screw	vis		
14	RPS-963/51	1	interruttore trifase da 380V - 16A	main switch	interrupteur		
15	RPS-963/52	3	fusibile da 380V - 15A	fuse	fusible		
16	RPS-963/53	1	lampadina 24V - 3W	lamp	lampe		
17	RPS-963/57	1	passacavo	grommet	passse-cordon		
18	RPS-963/58	1	pedale	pedal	pédale		
19	RPS-963/59	1	pulsante	push	poussoir		
20	RPS-963/61	1	guaina metallica per cavo elettrico	sheath	gaine		
21	RPS-963/62	1	presa 2x6A	socket	prise		
22	RPS-963/60	1	carter protezione pulsante	cover	carter		
23	RPS-963/0059	1	vite 4MAx8TCE	screw	vis		

VIRGINIO RIMOLDI & C. S.p.A.

Via Vespi Siciliani, 9 - 20146 - MILANO Tel. 470.152/3/4/5 - 470.081/2/3/4/5
Telegrammi VIRIMOLDI - MILANO - Telex: 33120 RIMOLDI Casella Postale 1482

Printed in Italy