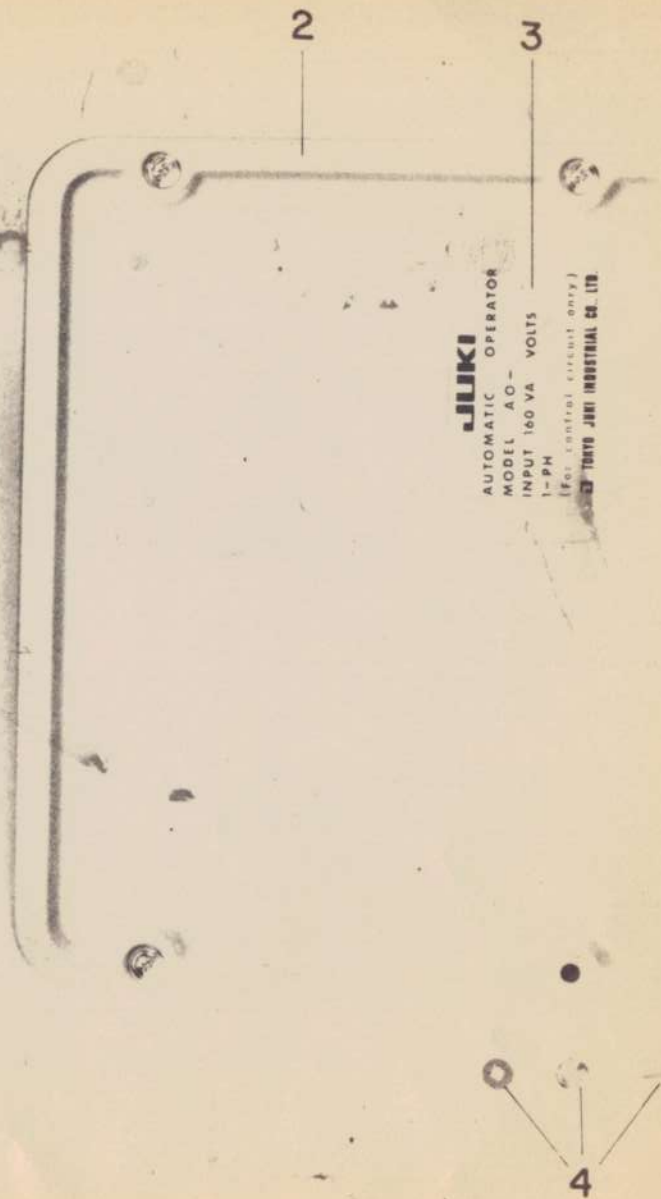
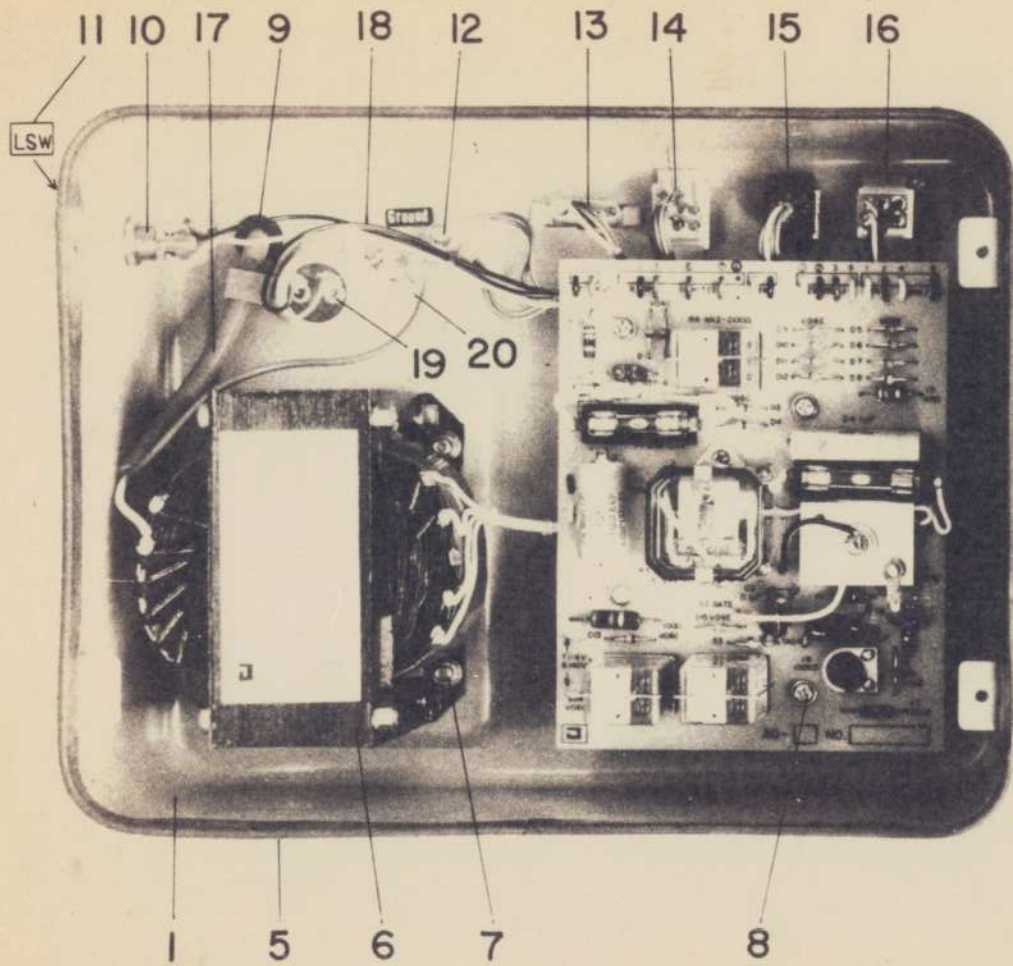


JUKI®

MODEL A0-7

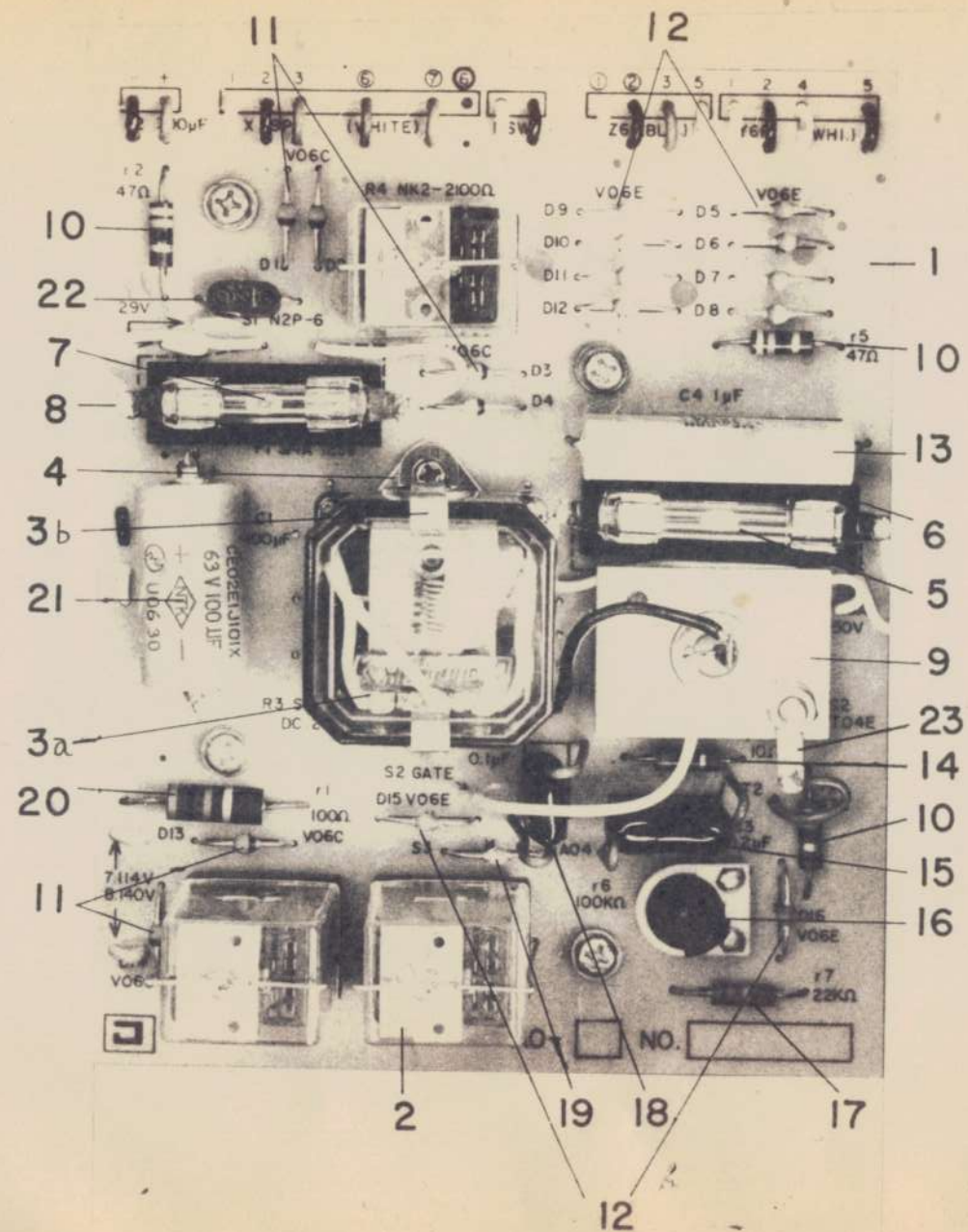
PARTS * BOOK

TOKYO JUKI INDUSTRIAL CO., LTD.



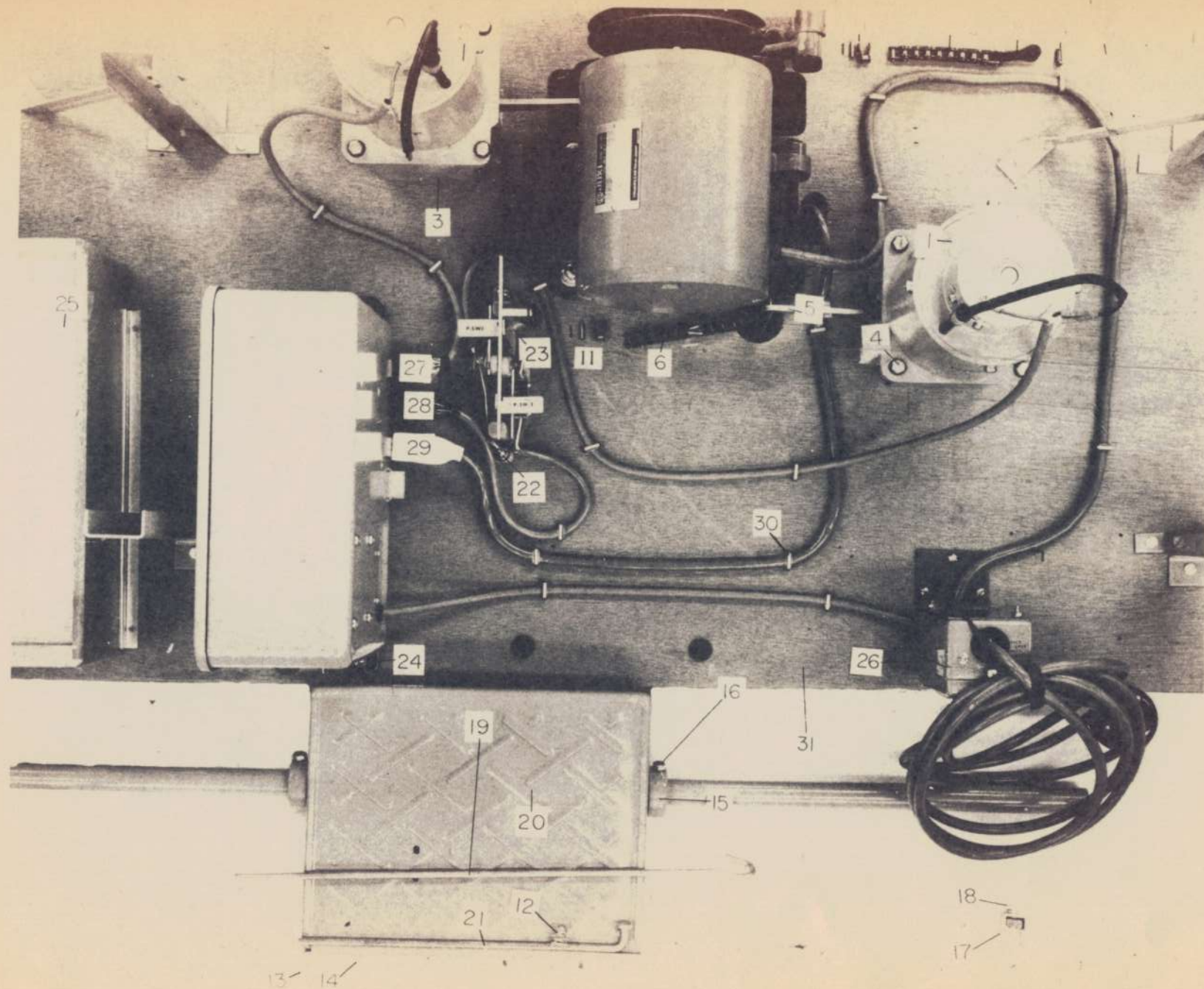
1. CONTROL BOX COMPONENTS

Ref.No.	Part No.	Description	Amt.Req.	Ref.No.	Part No.	Description	Amt.Req.
1	M-A07-1504-0A0	Control box	1	13	M-A11-5042-000	4 pole receptacle, white	1
2	D-6044-555-B00	. . . Cover	1	14	D-6028-555-B0B	9 pole receptacle, white	1
3	M-A07-1003-000	Name plate	1	15	M-A05-1501-00B	6 pole receptacle, black	1
4	SM-2042011-SA	Screw, for control box cover	4	16	D-6029-555-B0B	6 pole receptacle, white	1
	D-6024-555-B00	. . . Washer	4	17	M-A07-1554-0A0	3-core power source cord	1
	D-6003-555-B00	. . . Fiber washer	4	18	HW-2F18S12-19	Electric wire,white	0.5m
5	D-6049-555-B00	Gasket	1		HF-2F18S12-10,Black	0.5m
6	M-A07-1509-000	Transformer	1		HW-2F18S12-12	. . . , Red	0.5m
	M-A07-1509-00B	Transformer (115,100V)	(1)		HW-2F18S12-15	. . . , Green	0.5m
7	SM-4051211-SE	. . . Screw	4	19	HC-A630J3C-14	Condenser 300uF	1
	NM-6050011-OE	. . . Nut	4	20	SM-4030611-SE	. . . Set screw	2
	WP-0550800-SE	. . . Washer	8		WS-0310702-KZ	. . . Spring washer	2
	WS-0511302-KZ	. . . Spring washer	4		WP-0330500-SE	. . . Washer	4
8	SM-4040811-SE	Printed wire board set screw	4		NM-6030011-OE	. . . Nut	2
	WP-0450800-SE	. . . Washer	4				
	WS-0411002-KZ	. . . Spring washer	4				
9	D-6016-555-B00	Rubber bushing	1				
10	M-A01-1518-000	Push switch	1				
11	M-A07-1515-000	Name plate L.SW.	1				
12	SM-4040811-ME	Ground wire set screw	1				
	WS-0411002-KZ	. . . Spring washer	1				
	WP-0450801-MZ	. . . Washer	2				



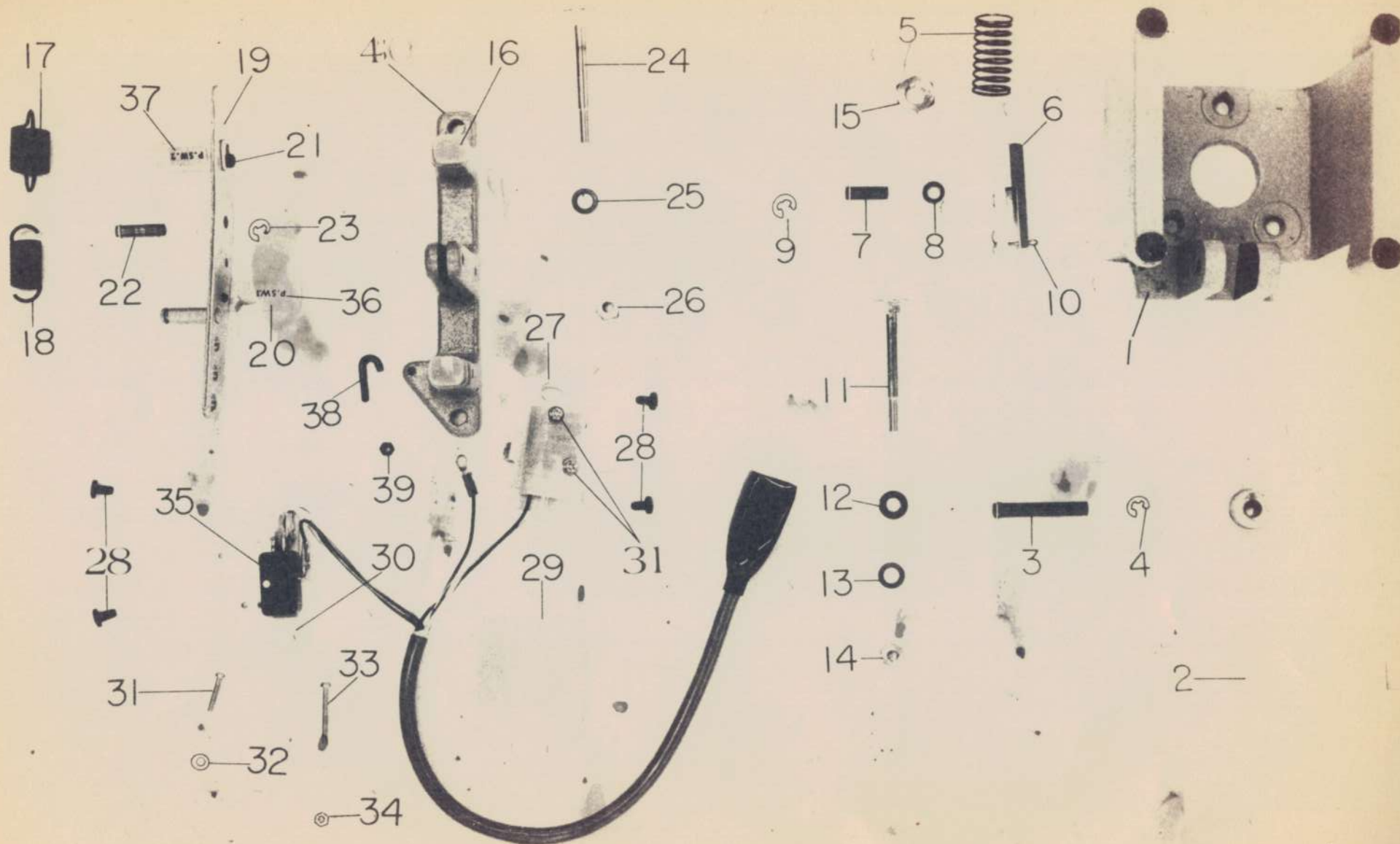
2. PRINTED WIRE BOARD COMPONENTS

Ref.No.	Part No.	Description	Amt.Req.	Ref.No.	Part No.	Description	Amt.Req.
1	M-A07-1510-000	Printed wire board	1		WP-0330500-SE	Washer, for fuse holder	2
2	M-A07-1507-000	Relay NK-2	3		WS-0310702-KZ	. . . Spring washer	1
	M-A07-1508-000	. . . Socket	3		NM-6030202-SE	. . . Nut	1
	D-6082-555-B00 Spacer	6	9	HS-1240160-P0	Bi-directional-triode thyristor asm.	1
	SM-4031401-SE	Relay socket screw	6		D-6091-555-B00	. . . Spacer	2
	WP-0260500-SE	. . . Washer	12		SM-4042011-SE	. . . Screw A	1
	WS-0260500-SE	. . . Spring washer	6		SM-4041211-RE	. . . Screw B	1
	NM-6030202-SE	. . . Nut	6		NM-6040012-OE	. . . Nut	2
3 a	MAO-71521000	Relay SRP113-1	1		WP-0450800-SE	. . . Washer	2
3 b	D-6086-555-B00	. . . Stopper	2		WS-0411002-KZ	. . . Spring washer	2
4	D-6032-555-B00	. . . Socket	1		HR-1322470-61	Solid resistor 47 OHM	3
	SM-4030811-SE Screw	2	10	HG-2672011-2P	Diode V06C	6
	WP-0330500-SE Washer	4	11	HG-2674011-2P	Diode V06E	10
	WS-0310702-KZ Spring washer	2	12	HC-R401W10-P0	Condenser 1uF	1
	NM-6030011-OE Nut	2	13	HR-1322100-61	Solid resistor 10 OHM	1
5	M-A07-1501-000	Fuse 1.5A	1	14	HC-R401V22-S1	Condenser 0.22uF	1
6	M-A07-1503-000	. . . Holder	1	15	M-A07-1516-000	Semi-fixed resistor 100k OHM	1
	SM-4031011-SF Screw	1	16	HR-1322223-61	Solid resistor 22k OHM	1
	WP-0330500-SE Washer	2	17	HC-R401V10-S2	Condenser 0.1uF	1
	WS-0310702-KZ Spring washer	1	18	M-A07-1517-000	Trigger diode	1
	NM-6030202-SE Nut	1	19	HR-1522101-61	Solid resistor 100 OHM	1
7	M-A07-1502-000	Fuse 3/4A	1	20	HC-A630J10-14	Condenser 100uF	1
8	M-A07-1519-000	Fuse holder, for 3/4A fuse	1	21	D-6054-555-B00A	Arc suppressor	1
	SM-4031011-SF	. . . Screw	1	22	D-6092-555-B00	Terminal	1
				23			



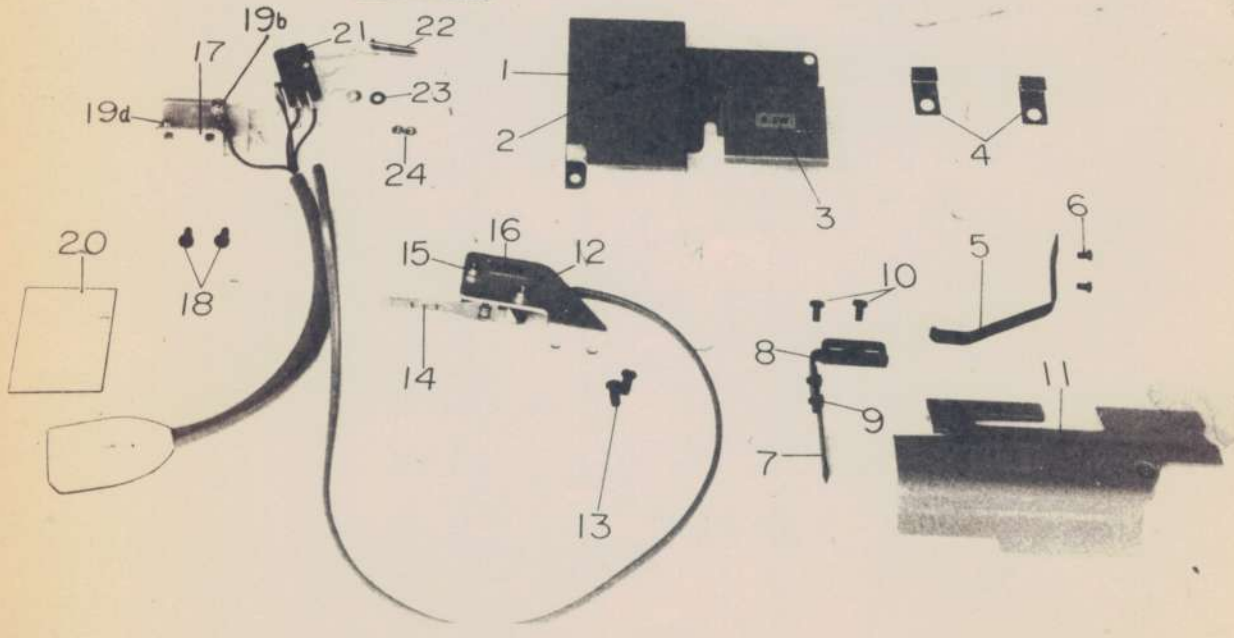
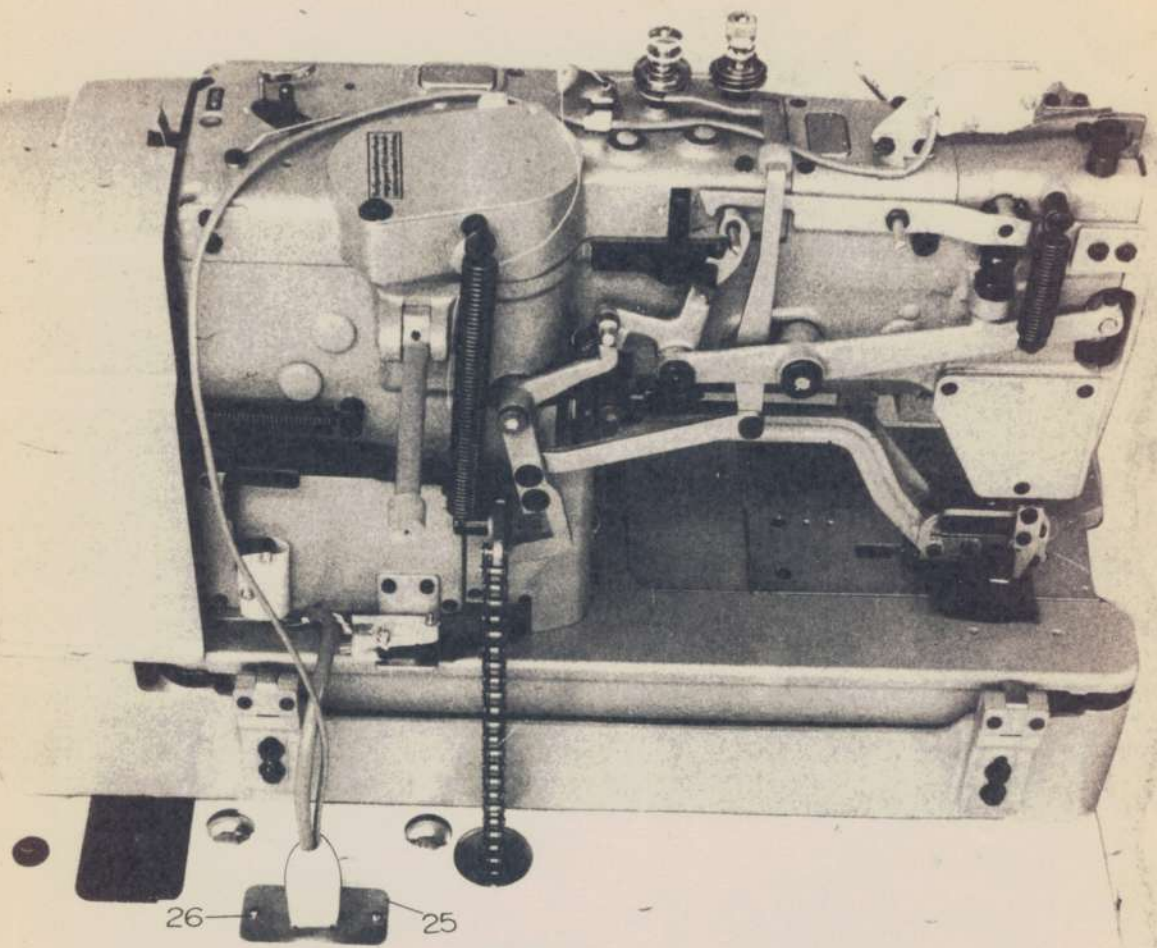
3. PEDAL & TABLE COMPONENTS

Ref.No.	Part No.	Description	Amt.	Req.	Ref.No.	Part No.	Description	Amt.	Req.
1	M-A07-1010-000	Work clamp check lifting magnet	1		16	SM-9061203-SE	Screw, for pedal bushing	4	
2	M-A07-1009-000	Starting magnet	1		17	B-7114-012-000	Connecting rod joint	1	
3	M-A07-1001-000	Magnet mounting base			18	SM-9081423-SE	. . . Screw	1	
4	SM-9062203-SB	Screw, for magnet	8			NM-6080721-SE	. . . Nut	1	
	WP-0621016-SD	Washer, for magnet	8		19	M-A07-2002-000	Upper connecting rod	1	
	WS-0621210-KR	Spring washer, for magnet	8		20	B-8105-012-000	Pedal	1	
5	M-A07-1002-000	Lever			21	B-7116-012-000	Lower connecting rod	1	
6	M-A05-1008-000	Work clamp check lifting chain	1		22	M-A01-1108-N00	Pedal switch frame screw		
7	M-A07-1005-000	Starting chain	1		23	M-A01-2001-000	Pedal switch frame		
8	M-A07-1006-000	. . . Link	1		24	M-A01-1108-N00	Control box set bolt	4	
9	M-A05-1011-000	. . . Shaft	1			D-6056-555-B00	. . . Rubber washer	8	
10	RE-0300000-KO Snap ring	2			NM-6060000-SB	. . . Nut	4	
11	M-A07-1008-000	R 35 off-set link	1			WP-0551626-SD	. . . Washer	4	
12	B-7133-012-000	Connecting rod spring	1			WS-0621210-KR	. . . Spring washer	4	
13	B-8104-012-000	Pedal adjusting plate	1		25	B-8202-019-00A	Drawer	1	
14	SM-9061203-SE	. . . Screw	3		26	MTK-440VSW00	Motor switch	1	
	WP-0671016-SE	. . . Washer	3		27	M-A07-1552-0A0	Cord assembly, for magnet		
	WS-0621210-KR	. . . Spring washer	3		28	M-A07-1550-0A0	Cord assembly, for pedal switch		
	NM-6060001-SE	. . . Nut	3		29	M-A07-1553-0A0	Machine frame connecting cord		
15	B-8125-012-000	Pedal bushing	2		30	M-A01-1532-000	Staple	12	
					31	M-A07-1004-000	Table	1	



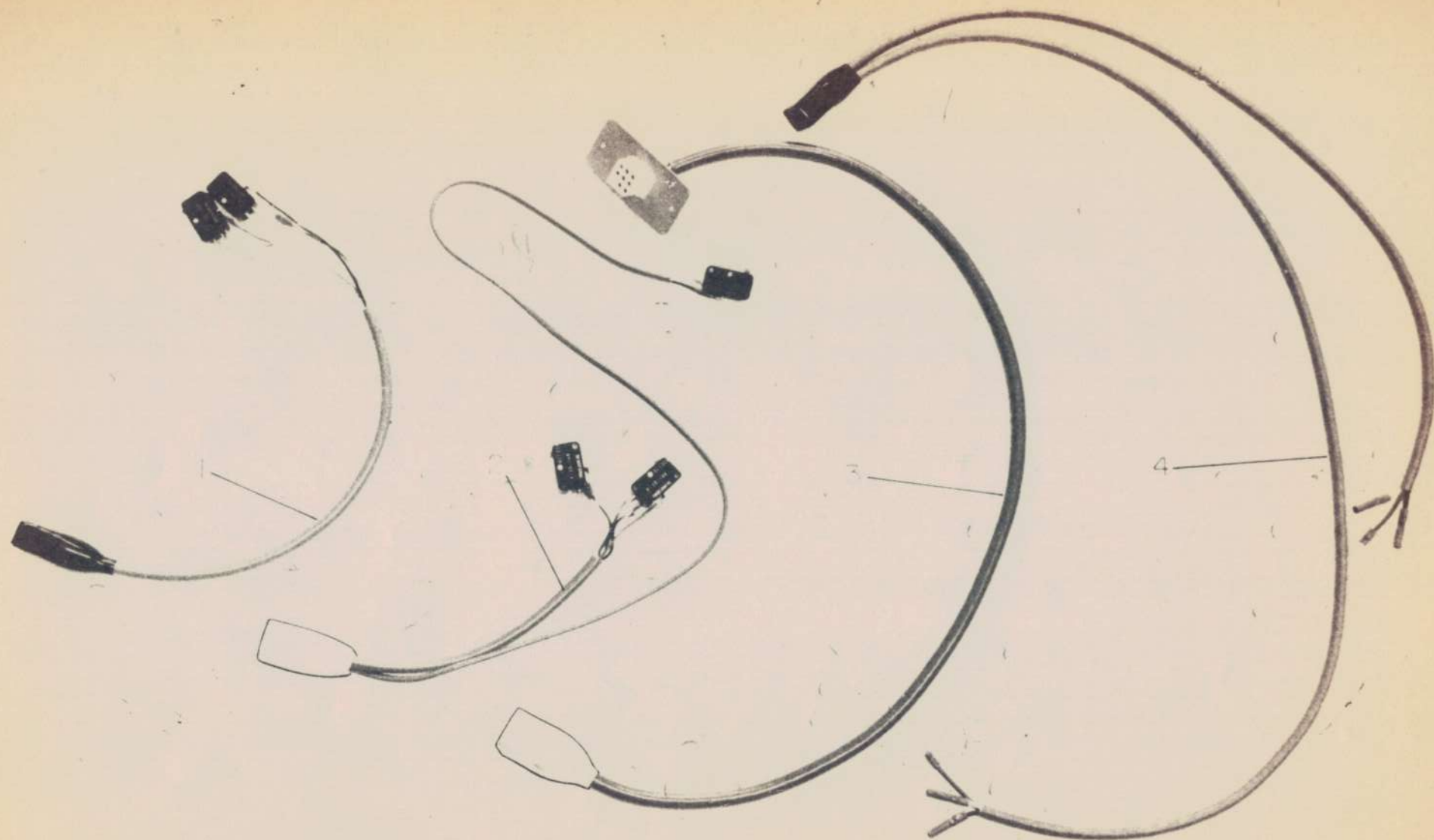
4. PEDAL SWITCH & MAGNET COMPONENTS

Ref.No.	Part No.	Description	Amt.Req.	Ref.No.	Part No.	Description	Amt.Req.
1	M-A07-1001-000	Magnet mounting base	2	21	SS-7090710-SP	Switch pressing plate screw	2
2	M-A07-1002-0A0	Lever complete	2	22	M-A01-2002-000	Pedal lever shaft	1
3	M-A05-1004-000	Lever shaft	2	23	RE-0320610-KX	. . . Snap ring	2
4	RE-0400000-K0	. . . Snap ring	4	24	M-A01-1108-N00	Pedal switch frame screw	2
5	M-A07-1007-000	Spring, for magnet plunger	2	25	WS-0651510-KP	. . . Spring washer	2
6	M-A05-1005-000	Roller base	2	26	NM-6060000-SB	. . . Nut	2
7	M-A05-1006-000	Roller shaft	2	27	M-A05-2005-000	Pedal switch No.1 installing plate	1
8	M-A05-1007-000	Roller	2	28	SS-7110820-SP	. . . Screw, for N0.27 & 30	4
9	RE-0400000-K0	. . . Snap ring	4	29	M-A01-1602-N00	Switch insulating paper	2
10	PD-020180000	Roller base pin	2	30	M-A05-2002-000	Pedal switch No.2 installing plate	1
11	M-A01-1108-N00	Magnet screw	6	31	SM-4031601-SB	Micro-switch screw B	3
12	WP-0621016-SD	. . . Washer	6	32	WP-0330501-SB	. . . Washer	4
13	WS-0621210-KR	. . . Spring washer	6	33	SM-4032501-MB	Micro-switch screw C	1
14	NM-6060000-SB	. . . Nut	6	34	NM-6030001-MB	. . . Nut	1
15	NM-6100008-SB	Roller rock nut	2	35	M-A05-1503-000	Micro-switch	2
16	M-A07-2001-000	Pedal lever Rubber stopper	2	36	M-A01-1607-N00	Name plate P.SW.1	1
17	M-A01-2009-000	Pedal lever auxiriary spring	1	37	M-A02-1602-N00	Name plate P.SW.2	1
18	M-A07-2003-000	Pedal lever spring	1	38	B-2633-232-000	Hook, for lever auxiriary spring	1
19	M-A05-2003-0A0	Pedal lever complete	1	39	NS-6090310-SP	. . . Nut	1
20	M-A05-2001-000	Switch pressing plate	2	40	M-A01-2001-000	Pedal switch frame	1



5. MACHINE FRAME COMPONENTS

Ref.No.	Part No.	Description	Amt.Req.
1	M-A01-1101-N00	Switch cover	1
2	M-A01-1542-000	Name plate S.SW.	1
3	M-A01-1543-000	Name plate B.SW.	1
4	M-A01-1612-N00	Cable setting plate	2
5	M-A01-1049-000	B.SW. spring plate	1
6	SS-7080510-SP	. . . Screw	2
7	M-A01-1034-000	S.SW. spring plate	1
8	M-A01-1033-000	. . . Attaching base	1
9	SS-7080510-SP	. . . Screw	2
10	SS-7090710-SP	Screw, for No.8	2
11	D-1130-761-C00	Side cover	1
12	M-A01-1110-N00	D.SW. attaching base	1
13	SS-7110820-SP	. . . Screw	2
14	M-A01-1611-N00	D.SW. actuator	1
15	NM-6030001-MB	Micro-switch nut	2
	WP-0330501-SB	. . . Washer	2
	WT-0320001-KO	. . . Teethed washer	2
	SM-4032001-SB	. . . Screw A	2
16	M-A01-1606-N00	Name plate D.SW.	1
17	M-A01-1048-000	B.SW. attaching base	1
18	SS-7090710-SP	. . . Screw	2
19 a	SM-4032001-SB	Micro-switch screw A	1
	NM-6030001-MB	. . . Nut	3
	WP-0330501-SB	. . . Washer	2
	WT-0320001-KO	. . . Teethed washer	2
20	M-A01-1602-N00	Switch insulating paper	3
21	M-A05-1503-000	Micro-switch	3
22	SM-4032001-SB	. . . Screw A	2
23	WP-0330501-SB	. . . Washer	2
24	NM-6030001-MB	. . . Nut	2
25	M-A05-1502-000	Connector installing plate	1
26	SK-3241601-SB	. . . Screw	2
19b	SM-4032501-MB	Micro-switch screw C	1



6. CORD ASSEMBLY

Ref.No.	Part No.	Description	Amt.Req.
1	M-A07-1550-0A0	Cord assembly, for pedal	1
2	M-A07-1551-0A0	Cord assembly, for machine frame	1
3	M-A07-1552-0A0	Machine frame connecting cord	1
4	M-A07-1553-0A0	Cord assembly, for magnet	1



TOKYO JUKI



TOKYO JUKI INDUSTRIAL CO.,LTD.

Head Office & Plant, 2-1, 8-chome, Kokuryo-cho, Chofu-shi, Tokyo, Japan
Business Office: 23, Kabuki-cho, Shinjuku-ku, Tokyo, Japan
Cable Address: JUKI TOKYO Tetex: 232-2301 JUKI SHINJUKU TOK

Printed in Japan