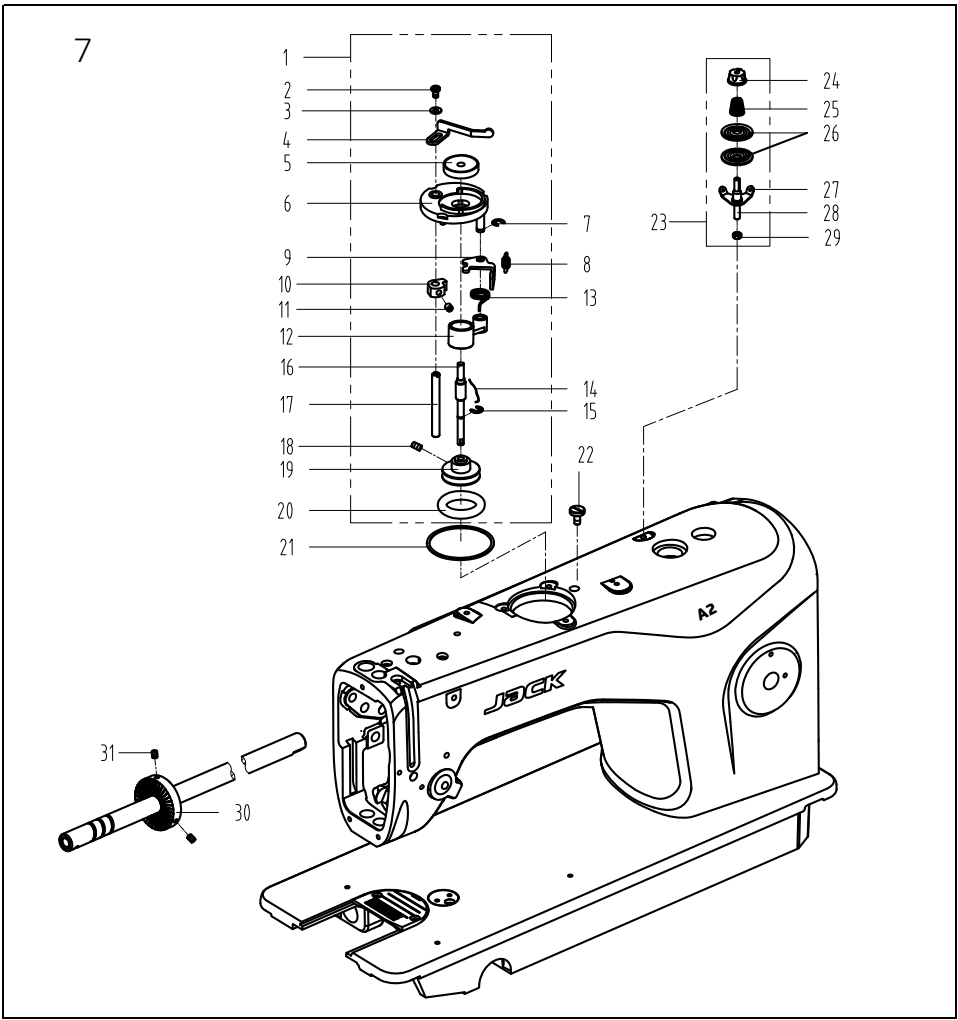


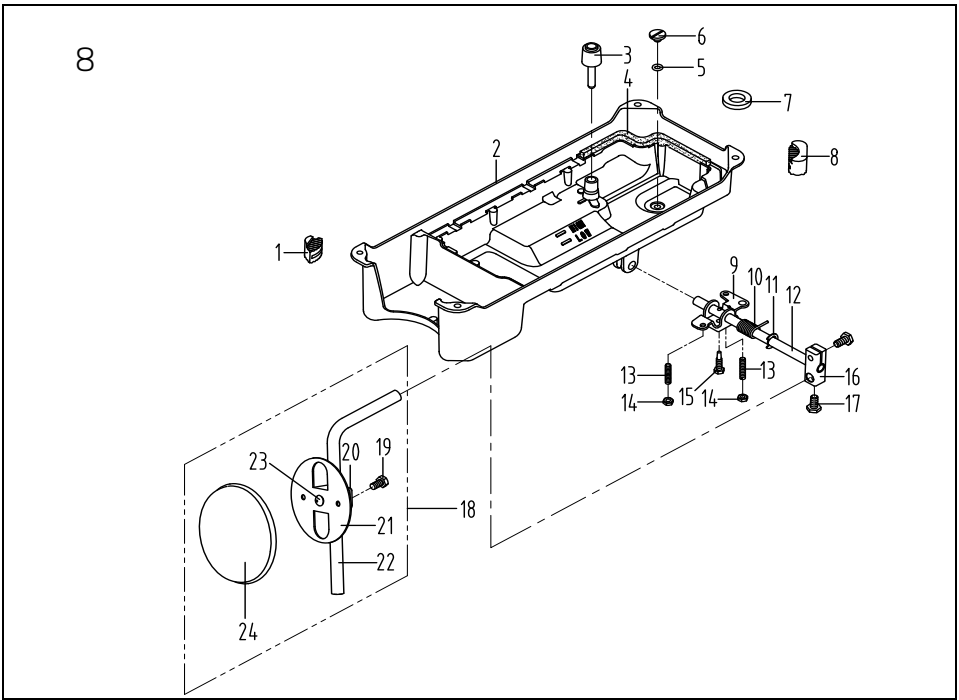
6. 润滑油组件/Oil Lubrication Components

序号NO.	公司件号	Part NO.	名称	PartName	零件描述	Description	数量	Number
1	1121004		油窗	Oil sight window			1	1
2	1012019		油窗O形圈	Rubber ring			1	1
3	11421008		主轴供油管	Main shaft oil tube			1	1
4	112530005		油泵连接螺栓	Oil pump connecting stud			1	1
5	11329010		开口挡圈10	Snap ring 10			1	1
6	10121001		下轴供油管	Hook driving shaft oil tube			1	1
7	10112020		油泵安装板	Oil pump installing base			1	1
8	W03002		弹垫	Spring washer			1	1
9	10151011		压脚螺钉SM11/64"×40 L=9.5	Screw SM11/64 " ×40 L=9.5			1	1
10	10103022		油泵体衬套	Oil pump bushing			1	1
11	101530007		柱塞螺钉	Plunger Screw			1	1
12	10127013		柱塞簧	Plunger spring			1	1
13	10122018		回油柱塞	Plunger			1	1
14	10120001		油泵体	Oil pump			1	1
15	S04009		油泵螺钉	Screw			3	3
16	10111003		油泵叶轮	Oil pump impeller			1	1
17	10112021		油泵叶轮托板	Oil pump impeller cover			1	1
18	10111007		油泵盖	Lubricating oil pump cover			1	1
19	101530006		螺钉	Screw			3	3
20	1012000100		油泵分部件	Lubricating oil pump component			1	1
21	10151026		螺钉SM15/64"×28 L=9	Screw SM15/64 " ×28 L=9			1	1
22	10136001		供油管接头	Rubber joint			1	1
23	W02004		GB/T93-1987弹垫M6	Spring Washer M6			1	1
24	11321002		供油管	Hook oil tube			1	1
25	10112022		旋梭供油管压板	Tube holder (lower)			1	1
26	11327004		油量调节螺钉弹簧	Spring			1	1
27	113530001		螺钉	Screw			1	1
28	10423005		油量调节螺钉	Oil wick			1	1
29	10127015		回油毡夹	Oil felt clamp			1	1
30	10123006		回油毡	Oil felt felt			1	1
31	10151004		排线杆护套螺钉SM3/16"×28 L=7	Screw SM3/16"×28 L=7			1	1
32	1012053		回油管夹	Oil tube clamp			1	1
33	10121007		回油管部件	Oil return tube component			1	1
34	10151026		螺钉SM15/64"×28 L=9	Screw SM15/64"×28 L=9			1	1
35	1012025		油线固定板	Oil wick fixing plate			1	1
36	10151010		压脚板手螺钉SM9/64"×40 L=11	Screw SM9/64"×40 L=11			2	2
37	10123010		油线	Oil wick			1	1
38	1012053		油线夹	Wick clip			1	1
39	11312031		挡油罩	Oil shield cover			1	1



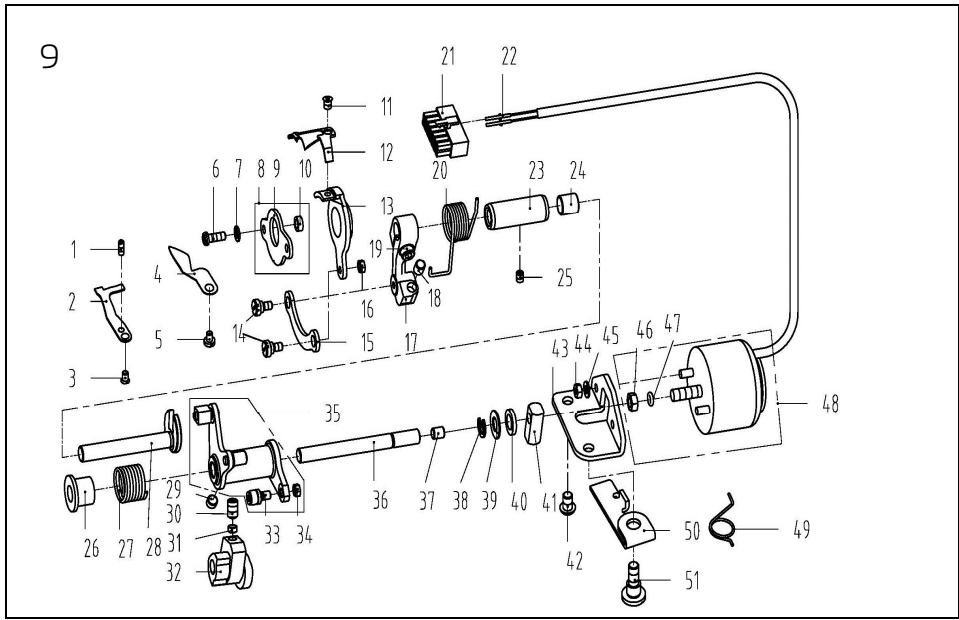
7. 绕线器组件/ Bobbin Components

序号NO.	公司件号	Part NO.	名称	PartName	零件描述	Description	数量	Number
1	1383103900		绕线器组件	Bobbin winder asm.			1	1
2	114510108		螺钉M4x6	Screw M4x6			1	1
3	GB/197.1		垫圈4	Washer			1	1
4	10110300		压线控制板	Thread press control plate			1	1
5	10111020		绕线衬垫	Winding pad			1	1
6	13831101		绕线器装置主座	Bobbin winder bed			1	1
7	GB/T 896-1986		开口挡圈5	Snap ring			1	1
8	10127061		复位板拉簧	Spring			1	1
9	13812110		调节板	Regulating plate			1	1
10	10110030		绕线凸轮	Bobbin winder cam			1	1
11	S09042		螺钉	Screw			1	1
12	1380510600		绕线器连杆组件	Bobbin winder connecting rod			1	1
13	13827103		调线复位簧	spring			1	1
14	10127060		弹簧	Spring			1	1
15	GB/T 896-1986		开口挡圈4	Snap ring			1	1
16	13802111		绕线器主轴	Bobbin winder mian shaft			1	1
17	13802026		绕线凸轮轴	Bobbin winder cam shaft			1	1
18	S09103		绕线轮螺钉	Screw			2	2
19	13831102		绕线轮	Bobbin winder wheel			1	1
20	001110		O型圈	Ring			1	1
21	11422062		密封垫	Washer			1	1
22	114510103		螺钉SM3/16"×28 L=10	Screw SM3/16"×28 L=10			3	3
23	1381300600		面线支线圈	Bobbin thread tension asm.			1	1
24	13811004		实线螺母	Thread tension nut			1	1
25	11427006		小实线弹簧	Spring			1	1
26	10120005		实线板	Thread tension disk			2	2
27	11413022		实线过线板	Thread tension guide plate			1	1
28	112513004		实线螺钉	Screw			1	1
29	114516001		螺母SM11/64"×40	Nut SM11/64"×40			1	1
30	11435013		绕线器驱动轮	Driving wheel			1	1
31	S10009		螺钉M6×8	Screw M6x8			2	2



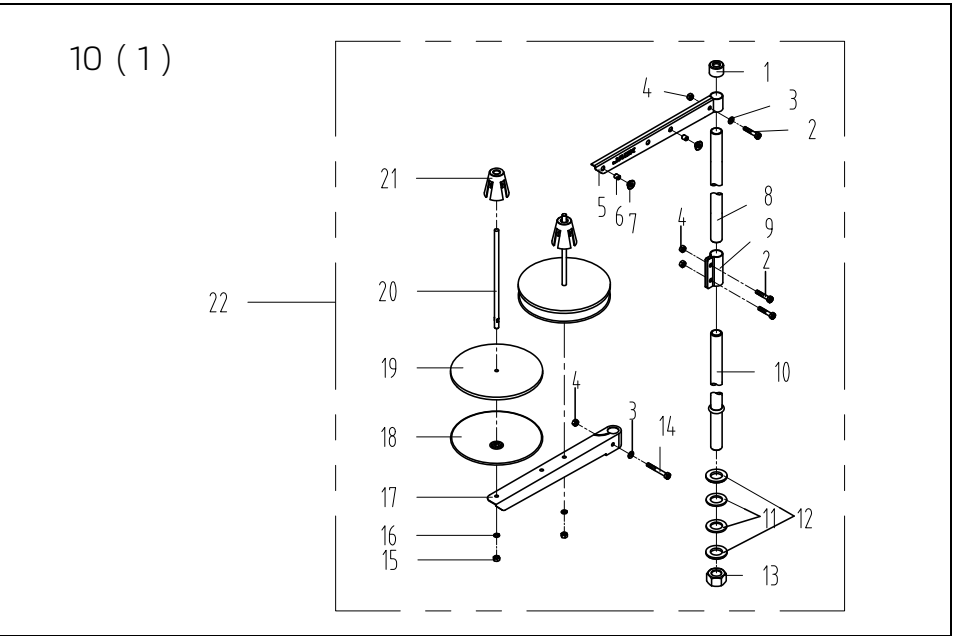
8. 油盒、膝抬压脚分组件/Oil Reservoir,Knee Lifter Components

序号NO.	公司件号	Part NO.	名称	PartName	零件描述	Description	数量	Number
1	10122022		油盒座垫	Oil reservoir rubber cushion			2	2
2	10101006		油盒	Oil Reservoir			1	1
3	10111005		抬压脚顶杆	Knee lifter push rod			1	1
4	10122020		油盒垫	Oil Reservoir gasket			1	1
5	10122021		O形圈	Rubber ring			1	1
6	10151028		排水孔螺钉SM5/16"×24 L=7	Screw SM5/16"×24 L=7			1	1
7	10131001		油盒磁铁	Oil reservoir magnet			1	1
8	10122023		油盒支架	Oil reservoir rubber cushion			2	2
9	1012027		抬压脚双向曲柄	Knee lifter crank			1	1
10	10127016		双向曲柄扭簧	Knee lifter spring			1	1
11	W05010		GB/T896-1986挡圈10	Snap ring 10			1	1
12	10102011		抬压脚轴	Knee lifter shaft			1	1
13	101515012		双向曲柄限位调节螺钉M6 L=30	Screw M6 L=30			2	2
14	101516004		双向曲柄限位调节螺母 M6 L=4	Nut M6 L=4			2	2
15	101512002		双向曲柄螺钉M6 L=26	Screw M6 L=26			1	1
16	10101008		抬压脚轴承杆节头	Bearing bracket			1	1
17	101512003		螺钉M8 L=16	Screw M8 L=16			1	1
18	101202800		操纵杆组件	Knee press plate asm.			1	1
19	101512004		螺钉M6 L=11	Screw M6 L=11			1	1
20	1012030		操纵杆节头	Knee press plate holder			1	1
21	1012029		操纵板	Knee press plate			1	1
22	1012028		操纵杆	Knee press plate rod			1	1
23	10122025		操纵杆垫	Rubber			1	1
24	10122024		操纵板软垫	Knee press plate cover			1	1



9. 切线装置部件/Thread Trimmer Components

序号NO.	公司件号	Part NO.	名称	PartName	零件描述	Description	数量	Number
1	113515002		定刀调节螺钉SM1/8"×44 L=9.5	Screw SM1/8"×44 L=9.5			1	1
2	11319001		定刀	Secant knife			1	1
3	113517001		螺钉SM9/64"×40	Screw SM9/64"×40			1	1
4	11312003		护针片	Needle guard patch			1	1
5	201510009		螺钉SM9/64"×40 L=5.5	Screw SM9/64"×40 L=5.5			1	1
6	11351001		螺钉SM11/64"×40 L=12	Screw SM11/64"×40 L=12			2	2
7	10128003		牙架压板螺钉圈	Washer			2	2
8	11312004		刀架压板组件	Knife bracket press component			1	1
9	11312032		偏心连杆	Eccentric connecting rod			1	1
10	11303012		短套	Short bushing			2	2
11	113517002		活动刀固定螺钉SM11/64"×40 L=4.4	Screw SM11/64"×40 L=4.4			2	2
12	11319002		活动刀(厚料长槽)	Motorial knife			1	1
13	11319003		剪线刀架	Knife bracket			1	1
14	11307001		连杆	hinge Screw SM11/64"×40			2	2
15	113520001		连杆螺钉SM11/64"×40	Connecting rod			1	1
16	11312005		螺母SM11/64"×40	Nut SM11/64"×40			1	1
17	11304001		曲柄	Crank			1	1
18	11322001		驱动曲柄止动块	Crank driver stopper block			1	1
19	S05004		螺钉M5x14	Screw M5x14			1	1
20	11327001		弹簧	Spring			1	1
21	11230004		1/4孔接线器	Plug			1	1
22	11230005		电线插针	Pin			1	1
23	11303003		切线轴套	Thread cutting shaft bushing			1	1
24	11503005		驱动曲柄轴衬套	Crank drive shaft bushing			1	1
25	113514002		螺钉SM11/64"×40 L=5.5	Screw SM11/64"×40 L=5.5			1	1
26	11322002		拉簧端盖	Spring cover			1	1
27	11327002		弹簧	Spring			1	1
28	11304002		切线凸轮曲柄轴	Crank shaft			1	1
29	113514003		针杆曲柄固定螺钉SM11/4"×40 L=4.5	Screw SM11/4"×40 L=4.5			1	1
30	113514005		螺钉SM11/4"×40 L=10	Screw SM11/4"×40 L=10			2	2
31	11309030		凸轮顶柱	Push rod			2	2
32	11310004		凸轮	Cam			1	1
33	11310011		凸轮(厚料)	Cam			1	1
34	11324001		滚柱	Rolling pin			1	1
35	113516002		螺母SM11/64"×40	Nut SM11/64"×40			1	1
36	1130400500		剪线驱动组件	Thread trimmer drive asm.			1	1
37	11302002		轴	Shaft			1	1
38	11322001		驱动曲柄止动块	Positioning block			1	1
39	H05010		GB/T896-1986挡圈	Snap ring			1	1
40	1012003		针杆曲柄护板	Cunter weight protecting			1	1
41	11322003		电磁铁缓冲片	Solenoid cushion rubber			1	1
42	11309001		切线电磁铁顶销	Solenoid pin			1	1
43	10151026		油泵安装螺钉SM15/64"×28 L=9	Screw SM15/64"×28 L=9			1	1
44	11312006		切线磁铁支架	Solenoid bracket			1	1
45	W01001		螺母M4	Nut M4			2	2
46	W01013		GB/T971.1-1986垫圈4.5	Washer			2	2
47	112516006		螺母SM11/4"×40	Nut SM11/4"×40			1	1
48	001004		O型圈	Rubber ring			1	1
49	1138303300		剪线电磁铁组件	Thread trimmer solenoid asm.			1	1
50	11327003		弹簧	Spring			1	1
51	1132007		松线座	Thread release bed			1	1
52	113520002		螺钉SM11/4"×28	Screw SM11/4"×28			1	1



10. 机头附件(1)-线架组件/Machine Head Accessories(1)-Thread Stand Components

序号NO	公司件号	Part NO.	名称	PartName	零件描述	Description	数量	Number
1	20131019		线架杆顶防护橡皮		Spool rest rod rubber cap		1	1
2	S04050		螺钉 M5 L=16		Screw M5 L=16		3	3
3	W01047		垫圈M5		Washer M5		2	2
4	N01034		螺母M5		Nut M5		4	4
5	13831022		上线架过线杆		Spool rest arm upper		1	1
6	10113011		过线圈 (内)		Thread guide ring		2	2
7	10113010		过线圈(外)		Thread guide ring		2	2
8	13831019		线架杆上节		Spool rest rod upper		1	1
9	13831021		线架杆接头		Spool rest rod joint		1	1
10	13831020		线架杆下节		Spool rest rod lower		1	1
11	10122106		橡胶垫圈		Spool rest rod rubber ring		2	2
12	W01048		垫圈M16		Washer M16		2	2
13	N02004		螺母 M16		Spool rest rod nut M16		1	1
14	S04051		螺钉 M5		Spool rest arm lower screw M5		1	1
15	N01034		螺母 M5		Nut M5		2	2
16	W02027		弹簧垫圈 M5		Spring washer M5		2	2
17	13831023		下线架过线杆		Spool rest arm lower		1	1
18	13831024		线盘		Spool rest		2	2
19	20131010		线盘垫		Spool rest cushion		2	2
20	20131006		线盘钉		Spool pin		2	2
21	13831025		线团防松垫		Spool retainer		2	2
22	138310300		线架组件		Thread stand asm.		1	1