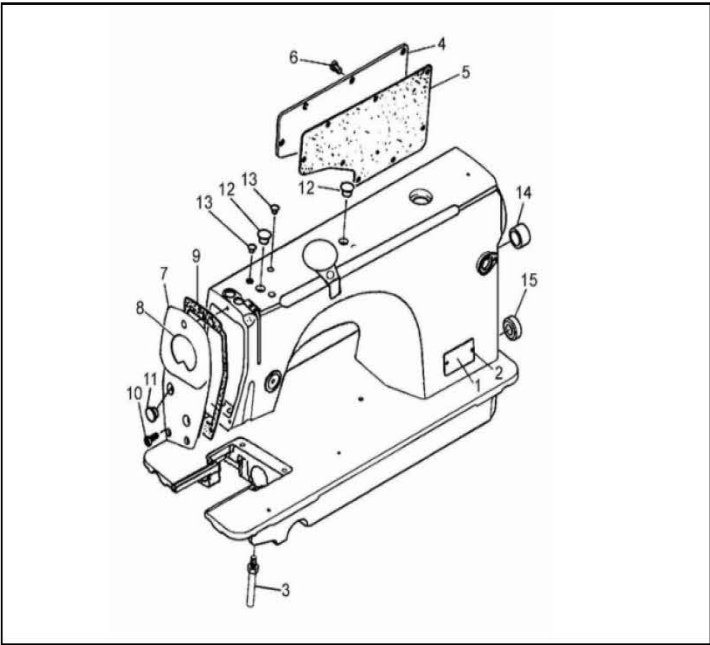


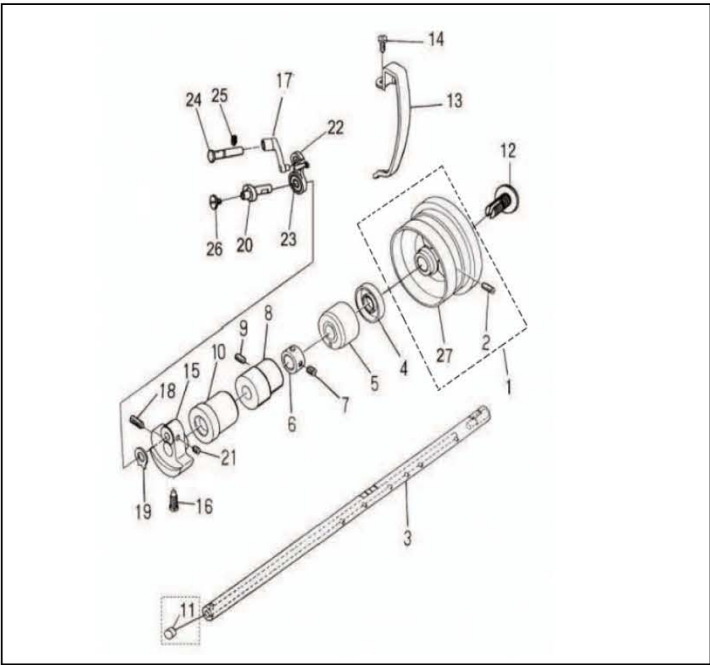


JK-5559高速侧切刀平缝机



1. 机壳分组件 Arm bed components

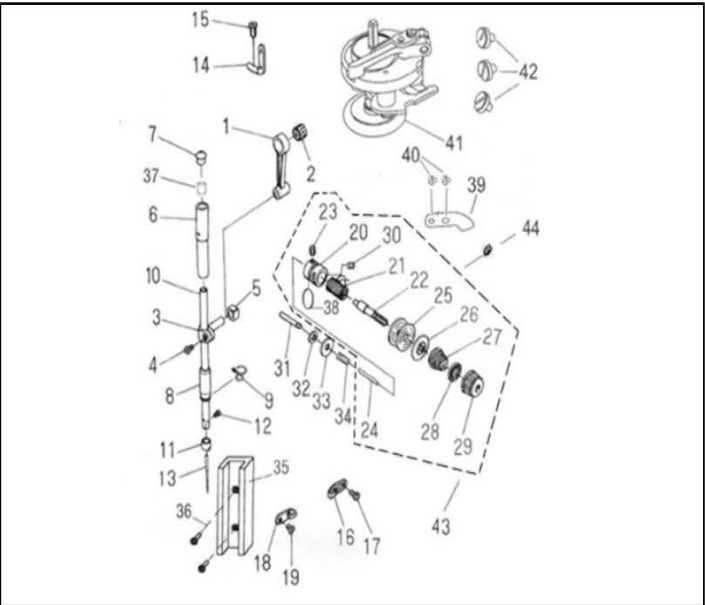
序号 No.	公司件号 Part No.	名称PartName	零件描述 Description	数量 Number
1	10137001	型号牌	Model plite	1
2	R03001	型号牌铆钉	Model plite rivet	2
3	101S12001	底板支柱	Bed screw stud	4
4	R03007	后盖板	Side plate	1
5	10322001	后盖板垫圈	Gasket	1
6	101S11001	螺钉 SM3/16" ×28 L=9	Screw SM3/16" ×28 L=9	8
7	R03016	面板	Face plate arm	1
8	10327001	带名牌 (机壳商标牌)	Plate with trademark	1
9	12822001	面板垫圈	Gasket	1
10	128S11001	面板螺钉 SM3/16" ×28 L=14	Screw SM3/16" ×28 L=14	3
11	10122003	面板调节螺塞	Rubber plug	2
12	10122004	针杆曲柄螺孔塞	Rubber plug	2
13	10122005	轴颈调节螺孔螺塞	Rubber plug	1
14	10122006	送料轴螺孔螺塞	Rubber plug	1
15	10122007	下轴工艺孔塞	Rubber plug	1



2. 上轴、挑线分组件 Main shaft, take-up components

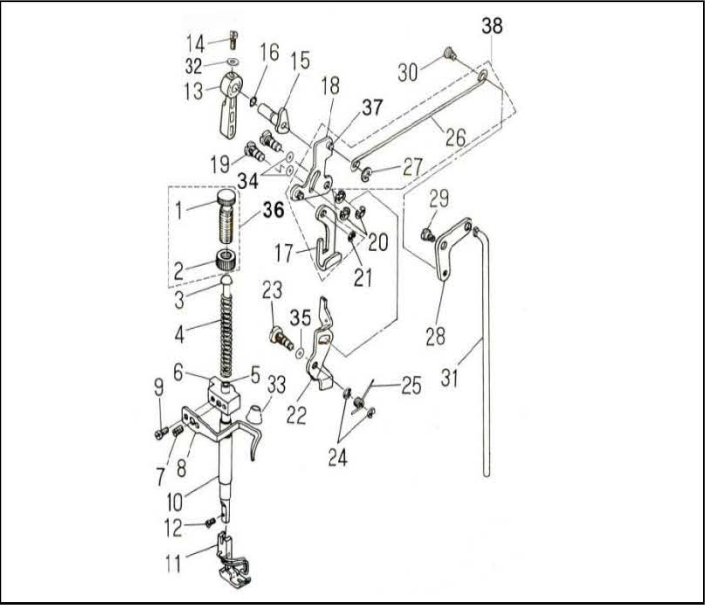
序号 No.	公司件号 Part No.	名称PartName	零件描述 Description	数量 Number
1	R03002	上轮	Hand wheel	1
2	101S15001	螺钉 SM15/64" ×28 L=15	Screw SM15/64" ×28 L=15	2
3	12202001	主轴 (无油)	Main shaft	1
4	12802001	上轴 (有油)	Main shaft (oil)	1
5	10122008	上轴油封	Main shaft bushing, front	1
6	10103001	上轴后轴承	Main shaft bushing, rear	1
7	10108001	上轴挡圈	Thrust collar asm	1
8	101S15002	螺钉 SM1/4" ×40 L=6	Screw SM1/4" ×40 L=6	2
9	12203002	主轴中轴套	Brushing, intermediate	1
10	101S15003	螺钉 SM15/64" ×28 L=7	Screw SM15/64" ×28 L=7	1
11	122030010	上轴前轴承分组件 (有油)	main shaft bushing, front	1
12	128030500	上轴前套分组件 (有油)	main shaft bushing, front	1
13	10122012	上轴孔塞 (有油)	Rubber plug	1
14	101230001	上轴安全螺钉 SM3/16" ×24 L=14	Screw SM3/16" ×24 L=14	1
15	1030611	挑线杆护罩 (5559MD)	Thread takeup lever cover	1
16	300056	挑线杆护罩	Thread takeup lever cover	1
17	101S11004	螺钉 SM3/16" ×28 L=6	Screw SM3/16" ×28 L=6	1
18	12804001	针杆曲柄	Counterweight	1
19	101S11003	针杆曲柄固定螺钉 SM3/32" ×28 L=16	Screw SM3/32" ×28 L=16	1
20	12205001	挑线连杆	Thread takeup crank	1
21	101S15004	针杆曲柄紧固螺钉 SM3/32" ×28 L=16	Screw SM3/32" ×28 L=16	1
22	10112003	针杆曲柄防护板	Counterweight protecting plate	1
23	122040020	挑线曲柄分组件	Needle bar crank asm	1
24	101100100	挑线曲柄分组件 (有油)	Needle bar crank asm	1
25	101S15002	送料轴紧固螺钉 SM1/4" ×40 L=6	Screw SM1/4" ×40 L=6	2
26	122380010	挑线杆分组件	Needle bar crank asm	1
27	R04008	CB/278轴承698Z2	Needle bearing	1
28	12225001	挑线连杆	Thread takeup crank shaft	1
29	101S15001	上轴螺钉 SM15/64" ×28 L=15	Screw SM15/64" ×28 L=15	1
30	101S17001	送料轴螺钉 (左旋) SM3/64" ×40 L=6	Screw SM3/64" ×40 L=6	1
31	300092	上轮	Hand wheel	1

零件手册



3. 针杆、夹线分组件 Needle bar, thread tension components

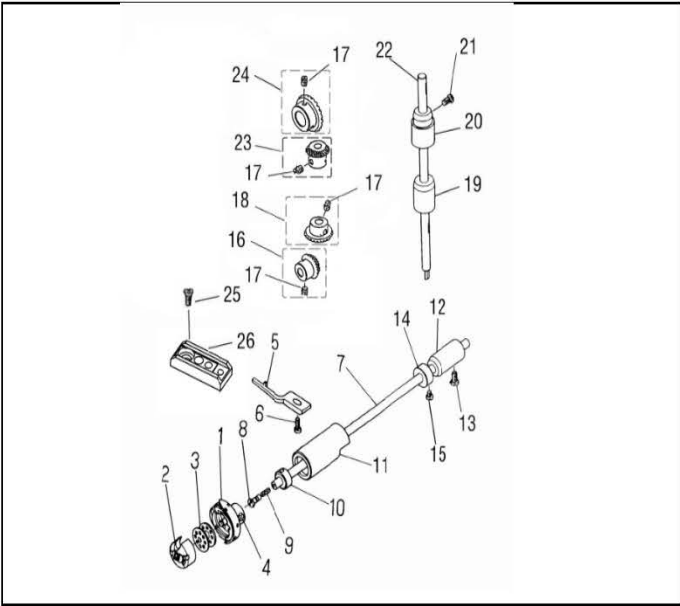
序号NO.	公司件号 Part No.	名称 PartName	零件描述 Description	数量 Number
1	12205002	针杆连杆组件	Needle bar crank rod	1
2	101G5002	针杆连杆 (有油)	Needle bar crank rod(oil)	1
3	R04008	CB/278轴承698Z2	Needle bearing	1
4	10138002	针杆连接柱	Needle bar connection asm	1
5	101S11005	螺钉 SM3/64" ×40 L=6	Screw SM3/64" ×40 L=6	1
6	10109001	针杆连接柱滑块	Slide block	1
7	101G3009	针杆衬套	Needle bar bushing, upper	1
8	10122013	针杆上衬套孔塞	Cap	1
9	101G3010	针杆下衬套	Needle bar bushing, lower	1
10	10138009	针杆下轴套线	Needle bar thread guide	1
11	12802008	针杆 (无油)	Needle bar (no oil)	1
12	12802009	针杆 (有油)	Needle bar (oil)	1
13	12813002	针杆线	Needle bar thread guide	1
14	101S11006	支杆螺钉 SM1/8" ×44 L=4.5	Screw SM1/8" ×44 L=4.5	1
15	10117001	机针 (14#)	Needle	1
16	10113003	上轴线勾	Double thread eyelet	1
17	101S11004	螺钉 SM3/16" ×28 L=6	Screw SM3/16" ×28 L=6	1
18	10113005	右线勾	Frsmse thread guide, right	1
19	101S11007	螺钉 SM1/64" ×40 L=6	Screw SM1/64" ×40 L=6	1
20	480003	挑线器座 (电镀后)	Tension post socket	1
21	1012021	挑线簧 (毛毡)	Take up spring	1
22	101G30002	夹线螺钉 SM1/4" ×40 L=17.5	Screw SM1/4" ×40 L=17.5	1
23	101S15005	挑线螺钉	Screw SM3/64" ×40 L=5.1	1
24	101G5002	挑线器座	Thread release pin	1
25	480001	夹线板	Tension disc	2
26	10122006	夹线板下垫圈	Tension disc holder	1
27	10127020	夹线簧	Tension spring	1
28	101G30104	夹线板垫圈	Tension disc stopper	1
29	101S16052	夹线螺母 SM1/4" ×40 L=10	Tension nut SM1/4" ×40 L=10	1
30	101S15006	螺钉 SM15/64" ×28 L=7	Screw SM15/64" ×28 L=7	2
31	10126003	挑线释放螺钉	Tension release supporting p	1
32	R05012	CB/T896-1986挡圈4	Shap ring4	1
33	101G30001	松线螺钉垫圈	Thread release pin spring	1
34	10127003	松线螺钉弹簧	Needle bar trough	1
35	10109002	针杆接头夹块导轨	Needle bar guide	1
36	101S11008	滑块导轨螺钉 SM1/64" ×40 L=8	Screw SM1/64" ×40 L=8	2
37	101G30008	针杆上垫圈	Oil felt for needle bar	1
38	10122014	刀圈	Knife	1
39	11419001	剃线刀	Knife	1
40	401S11040	剃线刀螺钉 SM1/64" ×40 L=8	Screw SM3/64" ×40 L=5	2
41	114131010	挑线器组件	Bobbin winder base component	1
42	101G30003	挑线器螺钉 SM1/64" ×28 L=10	Screw SM1/64" ×28 L=10	3
43	400507	夹线器组件	thread tension asm.	1
44	101S15006	夹线器螺钉	thread tension screw	1



4. 压料分组件 Presser bar components

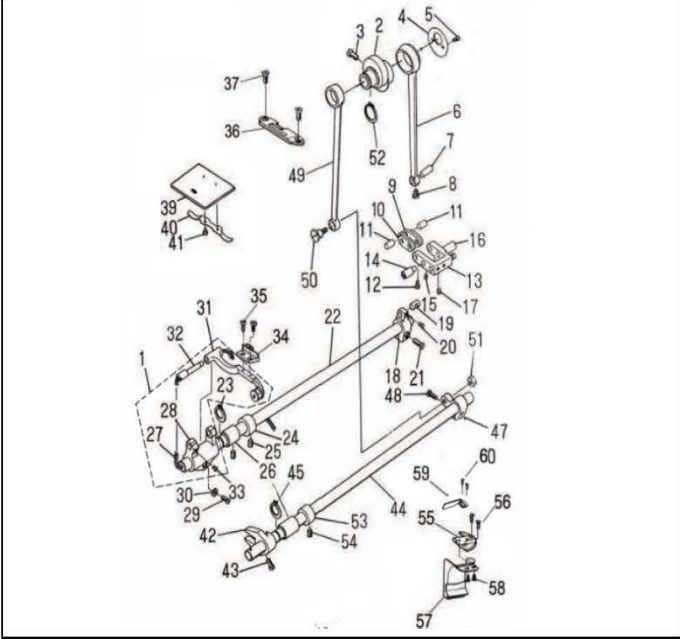
序号 NO.	公司件号 Part No.	名称 PartName	零件描述 Description	数量 Number
1	10111036	调压螺钉	Presser spring regulator	1
2	10111034	压料螺母 M1/2" ×28 L=8	Nut S M1/2" ×28 L=8	1
3	101G30007	压料手扳	Presser guide bar	1
4	10127005	调压簧	Presser spring	1
5	12800004	压料分组件	Presser bar	1
6	12809003	压料分组件	Needle bar guide bracket	1
7	101S11007	压料手扳螺钉 SM1/4" ×40 L=8	Screw SM1/4" ×40 L=8	1
8	10403001	螺纹调节圈	Presser bar thread guide	1
9	101S11005	螺钉 SM3/64" ×40 L=6	Screw SM3/64" ×40 L=6	2
10	101G3012	压料衬套	Presser bar bushing lower	1
11	128160030	压料脚垫 (3/16")	Presser foot asm	1
12	128160030	压料脚垫 (2/16")	Presser foot asm	1
13	101S11009	螺钉 SM3/64" ×40 L=10.5	Screw SM3/64" ×40 L=10.5	1
14	101S11008	压料脚垫	Hand lifter	1
15	101S11010	压料脚垫螺钉 SM3/64" ×40 L=11	Screw SM3/64" ×40 L=11	1
16	101030020	压料脚垫分组件	Hand lifter asm. asm.	1
17	10128002	压料脚垫分组件	Hand lifter asm.	1
18	10112010	压料升降板	Lifting lever	1
19	10112011	抬压脚前杆	Hand lifter link	1
20	101G30001	前杆杆螺帽 SM3/16" ×24 L=5.5	Link shaft nut SM3/16" ×24 L=5.5	2
21	R05009	抬压脚开口挡圈	Shap ring	2
22	R05009	升降板连接杆开口挡圈	Lifting lever ring	1
23	10112012	松线顶板	Tension release plate	1
24	101G30002	松线顶板螺钉	Tension release shaft	1
25	R05003	螺纹开口挡圈	Shap ring	1
26	10127008	挑线器返回弹簧	Tension release return spring	1
27	10122013	抬压脚杆	Presser lifter connecting rod	1

序号 NO.	公司件号 Part No.	名称 PartName	零件描述 Description	数量 Number
27	R05009	抬压脚开口挡圈	Shap ring	1
28	10112014	抬压脚杆	Lifting lever link	1
29	101S20003	后杆轴位螺钉 SM15/64" ×28 L=6	Hinge screw SM15/64" ×28 L=6	1
30	101S20004	抬压脚杆轴位螺钉 SM3/16" ×32 L=5	Hinge screw SM3/16" ×32 L=5	1
31	10112015	抬压脚杆轴位	Connecting rod vertical	1
32	101G30002	抬压脚杆轴位垫圈	Washer	1
33	10122022	压料脚垫	Presser bar defend oil bushin	1
34	10128015	压料脚垫橡胶垫圈 (厚)	Washer	2
35	10128016	压料脚垫橡胶垫圈 (薄)	Washer	1
36	10111027	调压螺钉组件	Presser spring regulator asm	1
37	10126005	抬压脚杆轴位	Presser lifter link	2
38	101120010	抬压脚杆轴位杆组件	Hand lifter link asm	1



5. 勾线分组件 Hook driving shaft components

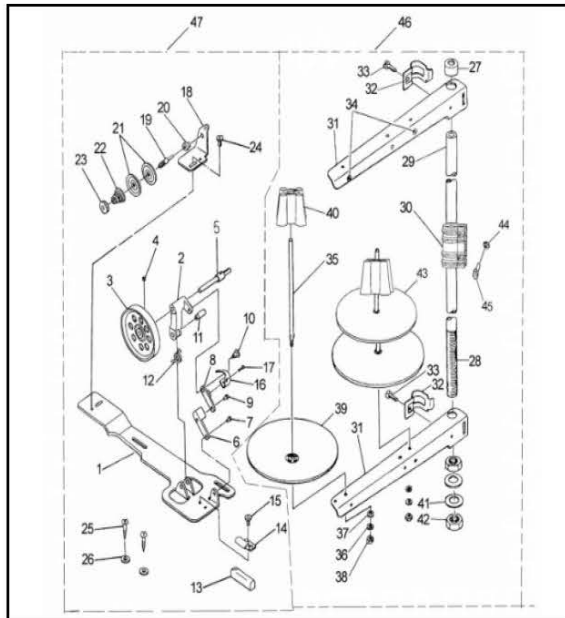
序号NO.	公司件号 Part No.	名称 PartName	零件描述 Description	数量 Number
1	10118504	旋梭 (国产)	Hook asm	1
2	10118001	旋梭 (国产)	Hook asm	1
3	10118501	旋梭 (国产)	Bobbin case asm	1
4	10118002	旋梭 (国产)	Bobbin case asm	1
5	10118003	旋梭	Bobbin	1
6	101S15008	旋梭紧固螺钉 SM1/64" ×40 L=4	Screw SM1/64" ×40 L=4	1
7	10112016	旋梭定位销	Positioning finger	1
8	101S11011	旋梭定位钩螺钉 SM1/64" ×40 L=8.5	Screw SM1/64" ×40 L=8.5	1
9	10120006	下轴	Hook driving shaft	1
10	10122015	下轴眼油封	Oil wick	1
11	101G30003	下轴眼油封	Throat collar	1
12	10123003	下轴眼油封	Bushing asm, front	1
13	101S15006	螺钉 SM15/64" ×28 L=7	Bushing, rear	1
14	101G30002	下轴挡圈	Screw SM15/64" ×28 L=7	1
15	101S11012	下轴挡圈螺钉 SM1/64" ×40 L=4	Throat collar asm	2
16	10125015	下轴安全销	Pinion asm	1
17	101S15009	螺钉 SM1/4" ×40 L=5.5	Screw SM1/4" ×40 L=5.5	8
18	10425002	压料下安全销	Gear asm large	1
19	10403013	压料下轴套	Upright shaft bushing, over	1
20	10403014	压料上轴套	Bushing upper	1
21	101S15006	螺钉 SM15/64" ×28 L=7	Screw SM15/64" ×28 L=7	1
22	101G30005	压料上轴套	Upright shaft	1
23	10425003	压料上安全销	Pinion asm	1
24	10425004	压料安全销	Gear asm	1
25	101S11011	旋梭定位钩螺钉 SM1/64" ×40 L=8.5	Fixed reverse arm	1
26	12804004	刀片固定架	Fixed blade fixed frame	1



6. 送料分组件 Feed mechanism components

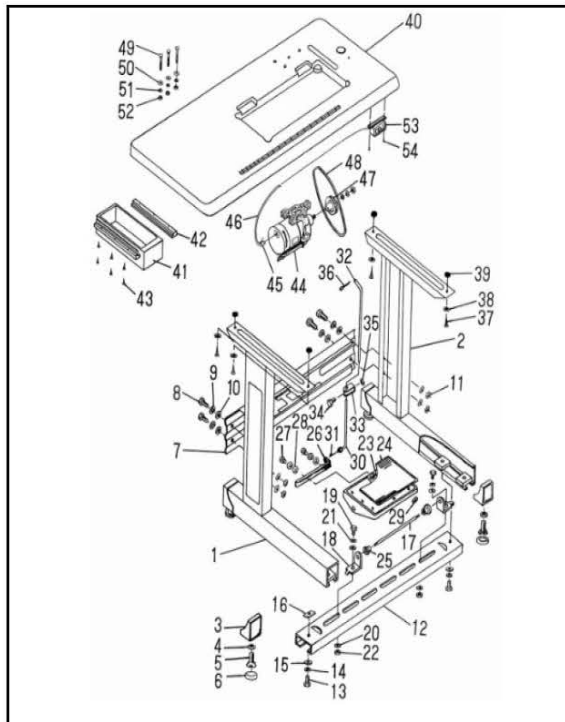
序号NO.	公司件号 Part No.	名称 PartName	零件描述 Description	数量 Number
1	400672	牙架座组件 (成品) (5559MD)	Feed rocker asm. (5559MD)	1
2	400689	牙架座组件 (成品) (5559MD)	Feed rocker asm. (5559MD)	1
3	400092	送料偏心轮	Feed frie eccentric cam	1
4	101S11013	送料偏心轮螺钉 SM1/4" ×40 L=13	Screw SM1/4" ×40 L=13	2
5	10112017	送料偏心轮垫圈	Thrust collar	1
6	101S11004	螺钉 SM3/64" ×40 L=5	Screw SM3/64" ×40 L=5	2
7	101S11005	螺钉 SM3/64" ×40 L=6	Screw SM3/64" ×40 L=6	2
8	400091	送料连杆	Rocker shaft connecting rod	1
9	10126006	送料连杆销	Walking foot pin	1
10	101S11005	螺钉 SM3/64" ×40 L=6	Screw SM3/64" ×40 L=6	1
9	10409004	送料连杆搭板	Walking foot link	2
10	10409006	送料搭板转轴	Connecting link	1
11	10126007	送料搭板连接销	Walking foot pin	2
12	101S11005	螺钉 SM3/64" ×40 L=6	Screw SM3/64" ×40 L=6	2
13	101G100200	送料搭板调整连接件	Walking foot adjusting link	1
14	101G60009	送料搭板轴座左端	adjusting link fulcrum shaft	1
15	101S15010	左端螺钉 SM15/64" ×28 L=10.5	Screw SM15/64" ×28 L=10.5	1
16	101G20010	送料搭板轴座右端	adjusting link fulcrum shaft	1
17	101S15010	右端螺钉 SM15/64" ×28 L=10.5	Screw SM15/64" ×28 L=10.5	1
18	101G40002	送料曲柄销	Feed rocker shaft crank asm	1
19	101G20011	送料曲柄销	Walking foot pin	1
20	101S11005	螺钉 SM3/64" ×40 L=6	Screw SM3/64" ×40 L=6	1
21	101S11016	螺钉 SM3/16" ×28 L=14	Screw SM3/16" ×28 L=14	1
22	101G20008	送料轴	Feed roller shaft	1
23	833001	保持圈 7/8"-1.998持圈15	Retaining ring	1
24	101S19003	送料轴垫圈	Thrust collar asm	1
25	101G10002	螺钉 SM1/4" ×40 L=6	Screw SM1/4" ×40 L=6	4
26	10403015	轴承	Feed tpeel shaft bushing	2
27	10423006	送料轴油线	Oil wick	2
28	101G10003	牙架座	Feed rocker asm.	1
29	101S11016	螺钉 SM3/16" ×28 L=14	Screw SM3/16" ×28 L=14	1
30	101G20003	牙架座螺钉垫圈	Washer	1
31	101G10042	牙架座	Feed bar asm.	1
32	10401007	牙架销	Feed bar shaft	1
33	101G10025	送料轴 SM1/16" ×40 L=47	Screw SM1/16" ×40 L=47	1
34	12814001	送料杆	Feed dog	2
35	101S11018	送料杆螺钉 SM1/8" ×44 L=5	Screw SM1/8" ×44 L=5	2

序号 NO.	公司件号 Part NO.	名称 PartName	零件描述 Description	数量 Number
21	10111011	机头支柱	Machine rest pin	1
22	1011101200	油腔供件	Oil reservoir asm	1
23	1011300700	过线器部件	Needle thread guide pin asm	1
24	10112008	过线柱	Needle thread guide pin	1
25	10112009	过线夹铁板	Tension disc	2
26	10127004	过线夹铁簧	Tension spring	1
27	101530063	螺钉SM3/16"×28 L=14	Screw SM3/16"×28 L=14	1
28	1281600300	活压脚部件3/16	Presser bar bushing lower	1
29	12814002	送料牙1/4	Feed dog	1
30	12815002	针板1/4	Throat plate 1/4	1
31	12815003	针板3/16	Throat plate 1/8	1
32	20131042	扳手7#	Spanner 7#	1
33	10131062	螺丝刀(大)	Screw driver,medium	1



10. 机头附件(2) Machine head accessories (2)

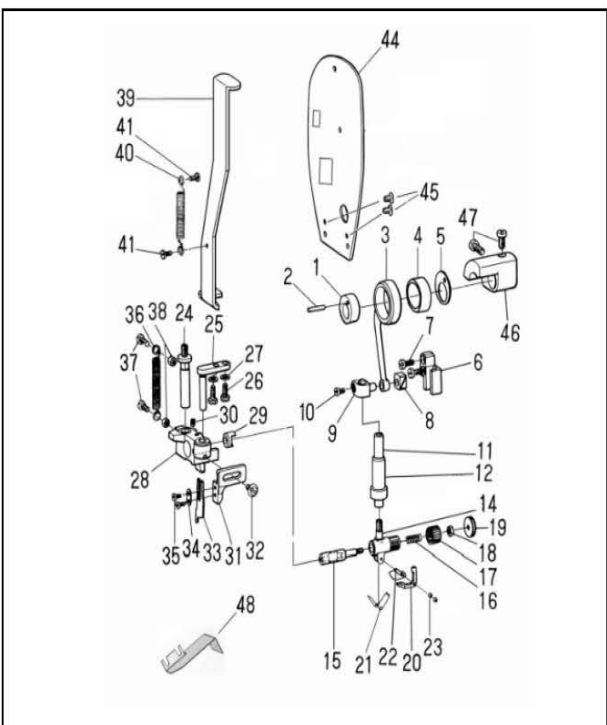
序号 NO.	公司件号 Part NO.	名称 PartName	零件描述 Description	数量 Number
1	10112032	绕线座	Bobbin winder base asm.	1
2	10101099	绕线架	Thread winder base asm.	1
3	10101010	绕线轮	Thread winder asm.	1
4	S04005	螺钉	Screw	1
5	10102012	绕线轴	Bobbin winder shaft	1
6	10112033	绕线架连杆	Connecting rod	1
7	10126018	绕线架连杆销	Connecting rod pin	1
8	10112034	绕线架连杆	Bobbin winder frame rod	1
9	10126018	绕线架连杆销	Bobbin winder frame rod pin	1
10	10126006	绕线架连杆轴位螺钉	Screw	1
11	10126019	绕线架销	Bobbin winder frame pin	1
12	10127017	绕线架簧	Bobbin winder frame spring	1
13	10122027	绕线轮制动垫	Rubber brake	1
14	10112035	制动垫夹	Presser plate	1
15	S04006	螺钉	Screw	1
16	10112036	绕线架簧	Bobbin winder spring	1
17	S04017	过线夹铁螺钉	Hinge screw	1
18	10112037	过线架座	Thread tension bracket asm	1
19	101530013	螺钉	Screw	1
20	10108006	过线夹铁板挡圈	Bobbin winder tension disc	2
21	10112038	过线夹铁板	Tension disc	1
22	10127013	过线夹铁簧	Tension spring	1
23	101516005	螺母	Nut	1
24	S04006	螺钉	Screw	2
25	101530014	木螺钉	Wood screw	2
26	10128008	垫圈	Washer	1
27	10122028	线架杆顶防橡皮	Spool rest rod rubber cap	1
28	10131003	线架杆下节	Spool rest rod (lower)	1
29	10131009	线架杆上节	Spool rest rod (upper)	1
30	10112039	线架杆接头	Thread rested joint	2
31	10112040	线架过线杆	Thread guide asm.	2
32	10112041	线架过线夹	Thread guide asm joint	2
33	S04013	螺钉	Screw	2
34	10113010	过线圈	Thread guide ring	2
35	10131010	线盘钉	Screw pin	2
36	10128009	弹簧垫圈	Spring washer	2
37	101516006	螺母	Nut	2
38	101516006	螺母	Nut	2
39	10111014	线盘防松垫	Spool vibration stopper	2
40	10128010	垫圈	Washer	2
41	N02003	螺母	Nut	2
42	S04018	螺钉	Screw	2
43	10123008	线盘垫	Spool rest cushion	2
44	N01002	螺母	Nut	2
45	S04013	螺钉	Screw	1
46	1013100700	线架组件	Thread Stand Components	1
47	1013100600	过线器分部件	Bobbin winder unit	1



11. 机架、台板、电器分组件 Machine table electric components

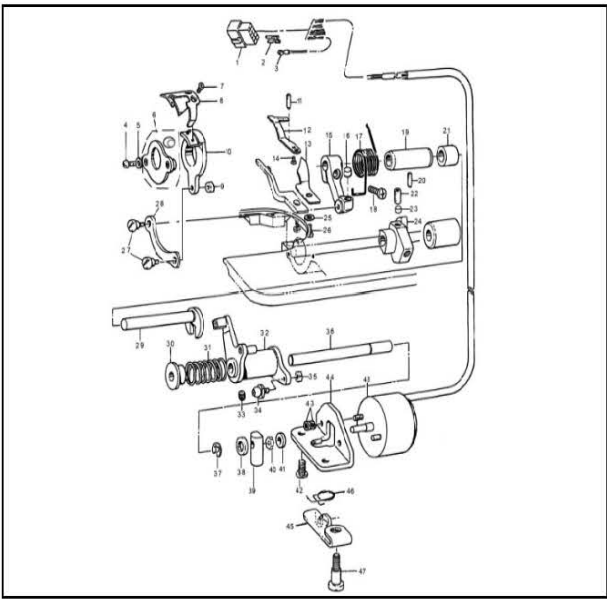
序号 NO.	公司件号 Part NO.	名称 PartName	零件描述 Description	数量 Number
1	1011204200	过线部件(左)	Stand side asm.left	1
2	1011204200	过线部件(右)	Stand side asm.right	1
3	10111015	边架垫圈	Rubber cushion	4
4	N01010	螺母	Nut	4
5	101530015	调节垫	Screw	4
6	10122029	调节垫橡胶	Space ring	4
7	10112044	横杆	Stand side support	1
8	L02014	横杆连接螺栓	Screw	1
9	10128011	垫圈	Space washer	4
10	N01010	垫圈	Washer	8
11	N01011	螺母	Nut	4
12	10112045	踏板轴档	Treadle brace	1
13	L02014	踏板轴档螺栓	Spring washer	2
14	10128011	垫圈	Washer	2
15	10112046	踏板轴档定位螺母板	Treadle brace locknut plate	2
17	10102013	踏板轴	Treadle shaft	1

序号 NO.	公司件号 Part NO.	名称 PartName	零件描述 Description	数量 Number
18	10112047	踏板轴档	Treadle bracket	2
19	L02014	踏板轴档螺栓	Screw	2
20	N01010	垫圈	Spring washer	2
21	10128011	弹簧垫圈	Spring washer	2
22	N01011	螺母	Nut	2
23	10112048	踏板	Treadle	1
24	10122030	螺钉	Screw	1
25	10128023	踏板连杆	Collar	2
26	10112049	踏板连杆	Treadle pitman	1
27	L02015	踏板杆固定螺钉	Screw	2
28	N01003	垫圈	Washer	4
29	N01012	螺母	Nut	2
30	10112050	下拉杆	Pitman rod,lower	1
31	10127019	拉杆弹簧	Spring	1
32	10112051	上拉杆	Pitman rod,upper	1
33	10112052	拉杆接头	Joint	1
34	L02015	拉杆接头螺栓	Joint screw	1
35	N01012	螺母	Nut	1
36	10129001	上拉杆杆口销	Pitman rod split pin(upper)	1
37	101530016	台板木螺钉	Table wood screw	4
38	10128012	垫圈	Table wood screw washer	4
39	10128013	台板垫圈	Table washer	4
40	10132002	台板	Table	1
41	10111016	抽斗	Drawer	1
42	10111017	抽斗导轨	Drawer rail	2
43	101530017	抽斗导轨木螺钉	Drawer rail wood screw	6
44	10133001	CF04024	Motor GFC04024	1
45	10130002	电机接线插头	Motor connecting wire plug	1
46	10130003	电机线轴	Motor wire	1
47	10130004	电机皮带轮	Motor pulley	1
48	10135002	机头传动带	Machine driving belt	1
49	101530018	螺钉	Screw	3
50	10128014	垫圈	Washer	3
51	10128011	弹簧垫圈	Spring washer	3
52	N01011	螺母	Nut	3
53	10130004	电源开关	Power source switch	1
54	101530019	电源开关木螺钉	Power source switch wood screw	2



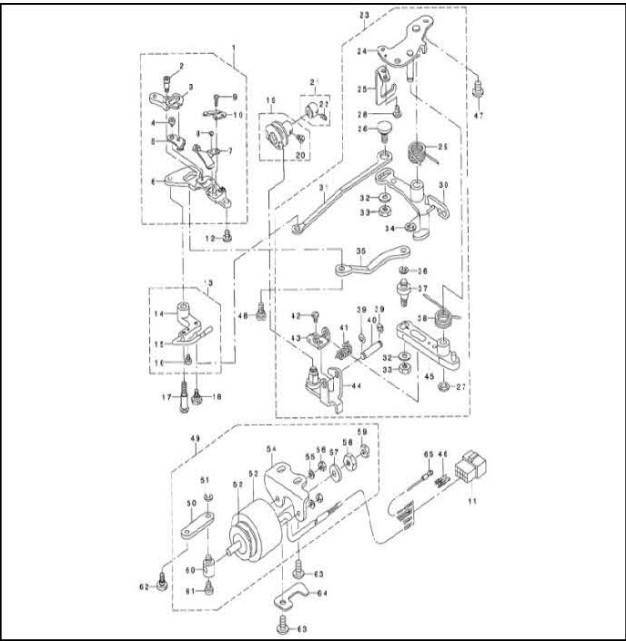
12. 切刀专用部件 Knife Components

序号 NO.	公司件号 Part NO.	名称 PartName	零件描述 Description	数量 Number
1	12710002	切刀凸轮	Knife cam	1
2	12724001	切刀销	Pin	1
3	12705003	切刀连杆	Knife driving rod	1
4	1272400100	切刀连杆轴承	Knife needle bearing	1
5	12812005	切刀凸轮盖板	Thrust plate	1
6	12809001	切刀滑块导轨	Slide block guide	1
7	101511011	底座定位螺钉	Screw SM11/64"×40 L=9.5	2
8	12809002	切刀滑块	Crank slide block	1
9	12809002	切刀轴连接柱	Knife driving stud connection as	1
10	209S11009	止摆扎头螺钉	Screw SM9/64"×40 L=9.5	1
11	12802006	切刀轴 (DLC)	Knife driving stud (DLC)	1
12	12802011	切刀轴 (有油)	Knife driving stud (oil)	1
13	12803001	切刀轴衬套	Bushing	1
14	12804003	切刀离合支架	Knife driving rod clutch retain	1
15	12829001	切刀离合销	Knife driving rod clutch pin	1
16	12827001	切刀离合销簧	Spring	1
17	1281002	切刀离合销盖	Cap	1
18	101516003	N03螺母	Nut	1
19	12811001	切刀离合销盖按钮	Knob	1
20	12805001	切刀释放杆	Knife release lever	1
21	12827002	切刀释放杆簧	Spring	1
22	12826002	切刀放松杆销	Pin	1
23	N01018	GB/T6170-1986六角螺母	GB/T6170-1986 M2.5 Nut M2.5	2
24	12802003	切刀座轴	Knife driving block stud	1
25	12809002	切刀导杆销	Guide stud for knife driving	1
26	209S12001	螺钉 SM11/64"×40 L=8	Screw SM11/64"×40 L=8	2
27	12828001	切刀导杆销轴垫圈	Washer	2
28	1280100300	牙架连杆挡圈螺钉	Knife driving block asm	1
29	12803003	切刀座部件右套	Knife driving block right	1
30	128515003	牙架连杆挡圈螺钉	Screw SM11/64"×40 L=5	1
31	12801004	切刀架	Knife holder	1
32	128517001	切刀架螺钉	Screw SM11/64"×40 L=8	1
33	12819001	上切刀	Knife	1
34	12812006	上切刀压板	plate	1
35	101511018	送料牙螺钉	Screw SM1/8"×44 L=6	1
36	12827003	切刀拉簧	Spring	2
37	101511011	底座定位螺钉	Screw SM11/64"×40 L=9.5	1
38	201516003	N03螺母	Nut	2
39	12812007	切刀底座定位板	Knife positioning plate	2
40	12827004	复位板拉簧	Tension spring	1
41	12852001	轴位螺钉螺钉	Screw SM9/64"×30 L=4.5	2
42	12812008	复位板板盖	Face plate cover	1
43	101517002	针板螺钉	Screw SM11/64"×40 L=7.5	2
44	12801005	针板	Balance	1
47	402S11012	螺钉	Screw SM15/64"×28	2
48	12812009	废布帘盖 (555WD)	Waste material cover (555WD)	1



13. JK-5559WD切线装置部件 (圆刀) Thread trimmer components

序号NO.	公司件号 Part NO.	名称 PartName	零件描述 Description	数量 Number
1	11230004	14孔接线路	Housing 14P	1
2	11230015	12孔接线路	Housing 12P	1
3	11230005	电接触针	Pin contact	1
4	11232025	地线	Ground wire asm.	1
5	101531001	螺钉	Screw SM11/64"×40 L=12	2
6	10128003	踏板	Washer	2
7	10131004	刀架压板组件	Partiality shank asm.	1
8	112317002	活动刀固定螺钉	Screw	2
9	11319003	活动刀 (厚料长槽)	Material knife	1
10	113518001	螺母	Nut SM11/64"×40	1
11	11387001	剪刀刀架	Knife bracket	1
12	113515002	剪刀调节螺钉	Screw	1
13	11319001	定刀	Secant knife	1
14	11312003	护针片	Protect needle patch	1
15	113817001	螺钉 SM9/64"×40 L=5	Screw SM9/64"×40 L=5	1
16	11304001	曲柄	Thread shear rock arm	1
17	11322001	驱动曲柄止动块	Positioning block	1
18	112327001	弹簧	Spring	1
19	S05004	螺钉 M5 L=14	Screw M5 L=14	2
20	12803008	切线轴套	Thread shear cam rock arm	1
21	113514002	螺钉 SM11/64"×40 L=5.5	Screw SM11/64"×40 L=5.5	1
22	11303005	驱动曲柄轴衬套	Short bush	1
23	113514005	螺钉 SM1/4"×40 L=10	Screw SM1/4"×40 L=10	2
24	11309030	凸轮顶柱	Pole	2
25	11310004	凸轮	Thread shear cam	1
26	N02004	M6垫圈 GB/T93-1987	Washer 6	1
27	201511009	螺钉 SM9/64"×40 L=5.5	Screw SM9/64"×40 L=5.5	1
28	11323001	螺母 SM11/64"×40 L=5.5	Nut SM11/64"×40 L=5.5	2
29	11312005	连杆	Thread shear connecting rod	1
30	12802015	切线凸轮曲柄轴	Thread shear rock arm shaft	1
31	11322002	弹簧盖盖	Spring cover	1
32	11327002	弹簧	Spring	1
33	1130400500	剪线驱动组件	Thread shear rock arm shaft	1
34	113514003	针杆曲柄固定螺钉	Pin	1
35	11324001	滚花	Roll shaft Assy	1
36	113516001	螺母 SM11/64"×40 D=3	Nut SM11/64"×40 D=3	1
37	11302002	轴	Thread shear shaft	1
38	H03006	挡圈	Retaining ring	1
39	11322003	电磁铁铁簧垫	Magnetic plus cushion mat	1
40	11309001	切线电磁铁顶盖	Washer	1
41	113516006	螺母 SM1/4"×40	Nut SM1/4"×40	1
42	N01004	垫圈 4×1.8	Washer	1
43	101511025	油泵安装螺钉	Screw	1
44	N01001	螺母 M4	Nut M4	2
45	11312006	电磁铁铁支架	Magnetic plus cushion mat	1
46	11312007	电磁铁铁座	Thread loose seat	1
47	11327002	弹簧	Spring	1
48	113230002	螺钉 SM1/4"×28 L=13	Screw SM1/4"×28 L=13	1
49	113001100	剪线电磁铁组件	Magnetic plus	1



14. JK-5559WD切线装置部件 (平刀) Thread trimmer components

序号NO.	公司件号 Part NO.	名称 PartName	零件描述 Description	数量 Number
1	112900100	切线刀组件	Knife unit	1
2	112820001	螺钉销 D=4.6 H=7	Hinge screw D=4.6 H=7	1
3	11204001	活动刀曲柄	Forked base for knife	1
4	11281001	活动刀螺钉	Moving knife hinge screw	1
5	11290002	活动刀	Moving knife asm.	1
6	11201004	刀架	Knife mounting base	1
7	11212012	导针片	Thread guide for knife	1
8	112511005	螺钉 SM3/32"×56 L=2.3	Screw SM3/32"×56 L=2.3	1
9	112511006	螺钉 SM1/8"×44 L=6	Screw SM1/8"×44 L=6	2
10	11291003	固定刀	Counter knife	1
11	11230004	14孔接线路	Housing 14P	1
12	11230015	12孔接线路	Housing 12P	1
13	101511011	螺钉 SM11/64"×40 L=7	Screw SM11/64"×40 L=7	1
14	1120100500	剪线下线挡组件	Picking arm asm.	1
15	11201005	挡料器座	Picking arm	1
16	112511007	螺钉 SM9/64"×40 L=5	Screw SM9/64"×40 L=5	2
17	112820002	轴位螺钉 D=6.35 H=4.5	Hinge screw D=6.35 H=4.5	1
18	112820003	轴位螺钉 D=6.35 H=2.7	Hinge screw D=6.35 H=2.7	1</