

Rimoldi®

CATALOGO PEZZI DI RICAMBIO Rim®

Rim® SPARE PARTS CATALOGUE

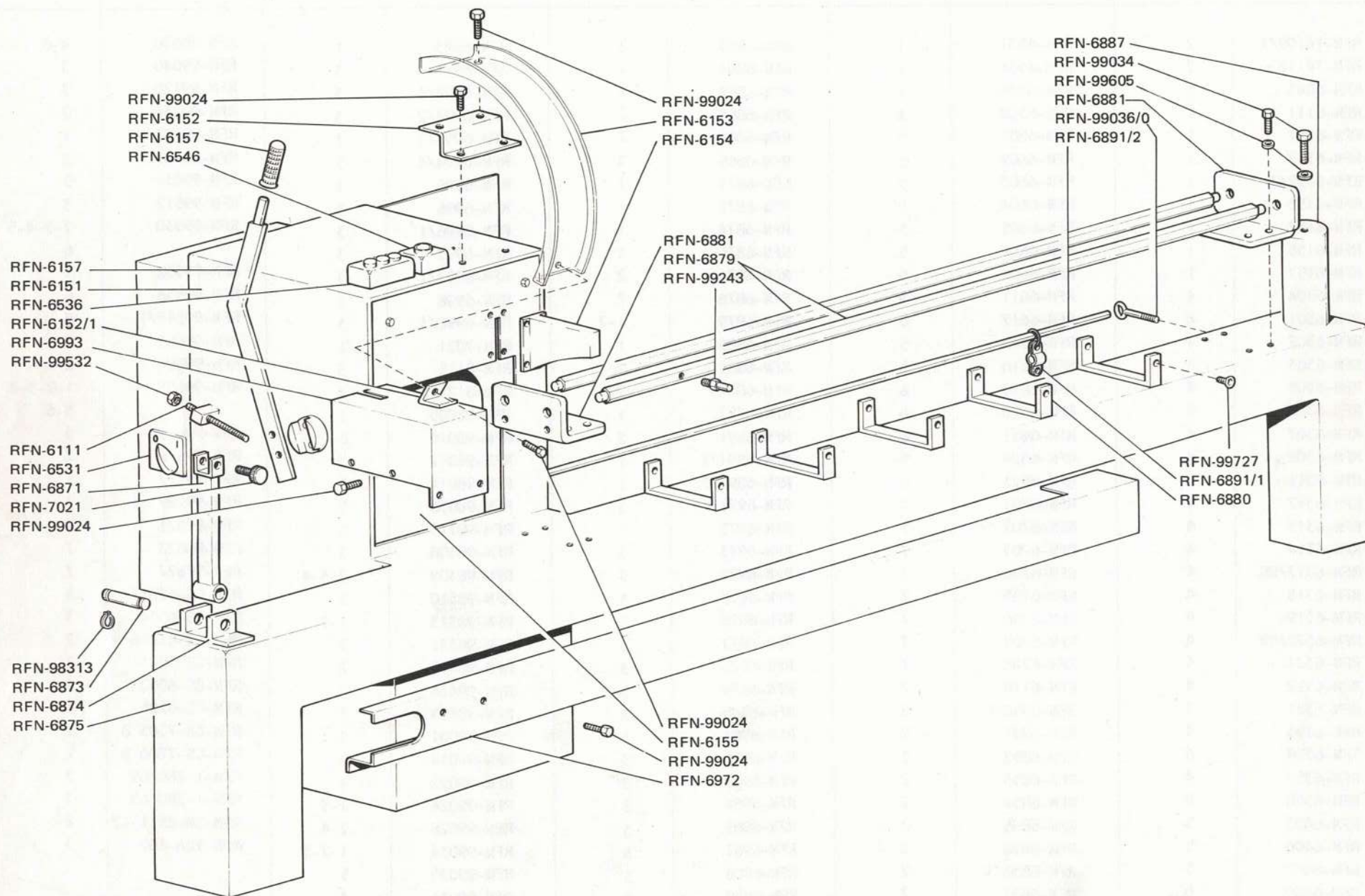
CATALOGUE RECHANGES Rim®

EFN-TMF/V

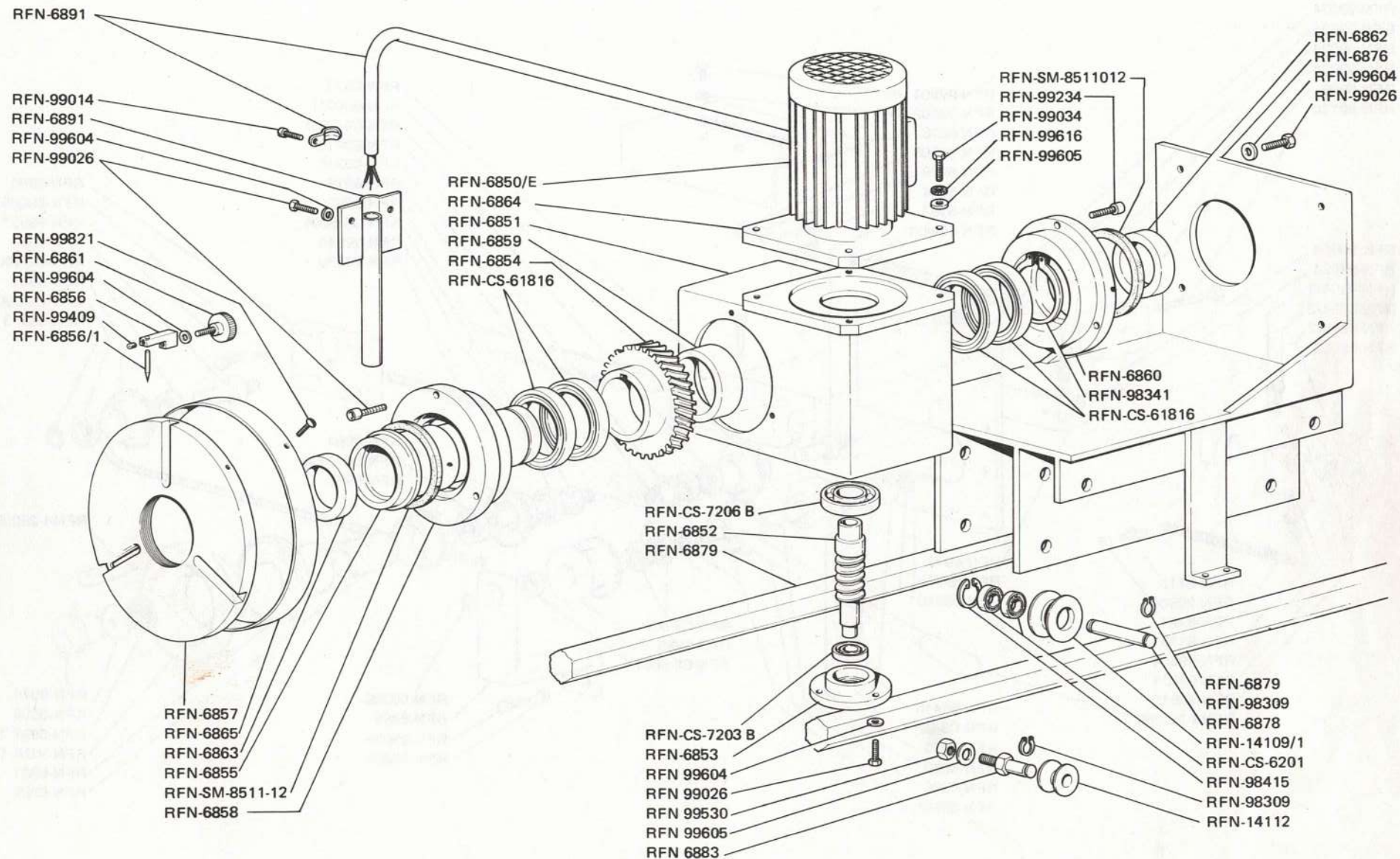
EDIZIONE - EDITION 4/85

n. 329

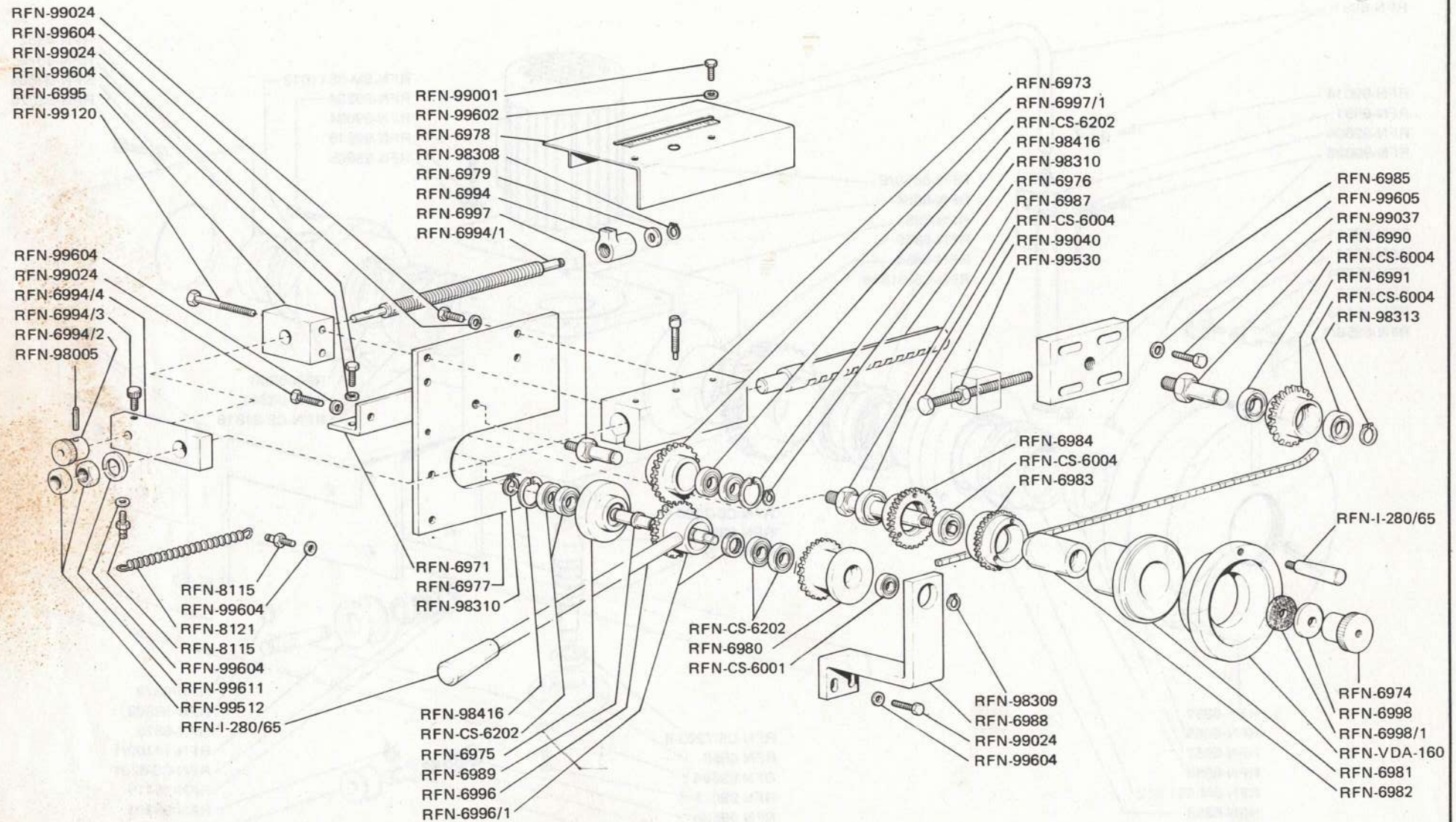
PART. N.	TAV. N.	PART. N.	TAV. N.	PART. N.	TAV. N.	PART. N.	TAV. N.	PART. N.	TAV. N.
RFN-14109/1	2	RFN-6531	1	RFN-6860	2	RFN-6993	1	RFN-99038	4-6
RFN-14112	2	RFN-6536	1	RFN-6861	2	RFN-6994	3	RFN-99040	3
RFN-6043	5	RFN-6546	1	RFN-6862	2	RFN-6994/1	3	RFN-99120	3
RFN-6111	1	RFN-6552	4	RFN-6863	2	RFN-6994/2	3	RFN-99234	2
RFN-6151	1	RFN-6601	5	RFN-6864	2	RFN-6994/3	3	RFN-99243	1
RFN-6152	1	RFN-6602	5	RFN-6865	2	RFN-6994/4	3	RFN-99409	2
RFN-6152/1	1	RFN-6603	5	RFN-6871	1	RFN-6995	3	RFN-99431	5
RFN-6153	1	RFN-6604	5	RFN-6873	1	RFN-6996	3	RFN-99512	3
RFN-6154	1	RFN-6605	5	RFN-6874	1	RFN-6996/1	3	RFN-99530	2-3-4-5
RFN-6155	1	RFN-6606	5	RFN-6875	1	RFN-6997	3		6
RFN-6157	1	RFN-6609	5	RFN-6876	2	RFN-6997/1	3	RFN-99532	1
RFN-6204	4	RFN-6611	5	RFN-6878	2	RFN-6998	3	RFN-99536	6
RFN-6301	4	RFN-6612	5	RFN-6879	1-2	RFN-6998/1	3	RFN-99548/1	4
RFN-6302	4	RFN-6613	5	RFN-6880	1	RFN-7021	1	RFN-99602	3
RFN-6303	4	RFN-6616	5	RFN-6881	1	RFN-8115	3	RFN-99604	2-3-4
RFN-6305	4	RFN-6619	6	RFN-6883	2	RFN-8121	3	RFN-99605	1-2-3-4
RFN-6306	4	RFN-6620	6	RFN-6887	1	RFN-98005	3		5-6
RFN-6307	4	RFN-6621	6	RFN-6891	2	RFN-98010	6	RFN-99611	3
RFN-6309	4	RFN-6624	5	RFN-6891/1	1	RFN-98012	5	RFN-99616	2
RFN-6311	4	RFN-6625	6	RFN-6891/2	1	RFN-98014	5	RFN-99727	1
RFN-6312	4	RFN-6701	7	RFN-6971	3	RFN-98036	5	RFN-99729	7
RFN-6313	4	RFN-6702	7	RFN-6972	1	RFN-98113	5	RFN-99821	2
RFN-6314	4	RFN-6703	7	RFN-6973	3	RFN-98308	3	RFN-99823	7
RFN-6317/RN	4	RFN-6704	7	RFN-6974	3	RFN-98309	2-3-4	RFN-99827	7
RFN-6318	4	RFN-6705	7	RFN-6975	3	RFN-98310	3	RFN-CS-6001	3
RFN-6319	4	RFN-6706	7	RFN-6976	3	RFN-98313	1-3	RFN-CS-6004	3
RFN-6320/RN	4	RFN-6707	7	RFN-6977	3	RFN-98341	2	RFN-CS-61816	2
RFN-6321	4	RFN-6708	7	RFN-6978	3	RFN-98415	2	RFN-CS-6201	2
RFN-6322	4	RFN-6710	7	RFN-6979	3	RFN-98416	3	RFN-CS-6202	3
RFN-6351	4	RFN-6850/E	2	RFN-6980	3	RFN-98815	7	RFN-CS-6205	4
RFN-6353	4	RFN-6851	2	RFN-6981	3	RFN-99001	3	RFN-CS-7203 B	2
RFN-6354	4	RFN-6852	2	RFN-6982	3	RFN-99014	2	RFN-CS-7206 B	2
RFN-6357	4	RFN-6853	2	RFN-6983	3	RFN-99022	4	RFN-I-280/65	3
RFN-6358	4	RFN-6854	2	RFN-6984	3	RFN-99024	1-3	RFN-I-280/65	3
RFN-6403	5	RFN-6855	2	RFN-6985	3	RFN-99026	2-4	RFN-SM-8511-12	2
RFN-6406	5	RFN-6856	2	RFN-6987	3	RFN-99034	1-2-5	RFN-VDA-160	3
RFN-6407	5	RFN-6856/1	2	RFN-6988	3	RFN-99035	5		
RFN-6409	5	RFN-6857	2	RFN-6989	3	RFN-99036	4		
RFN-6410	5	RFN-6858	2	RFN-6990	3	RFN-99036/0	1		
RFN-6419	5	RFN-6859	2	RFN-6991	3	RFN-99037	3-5		

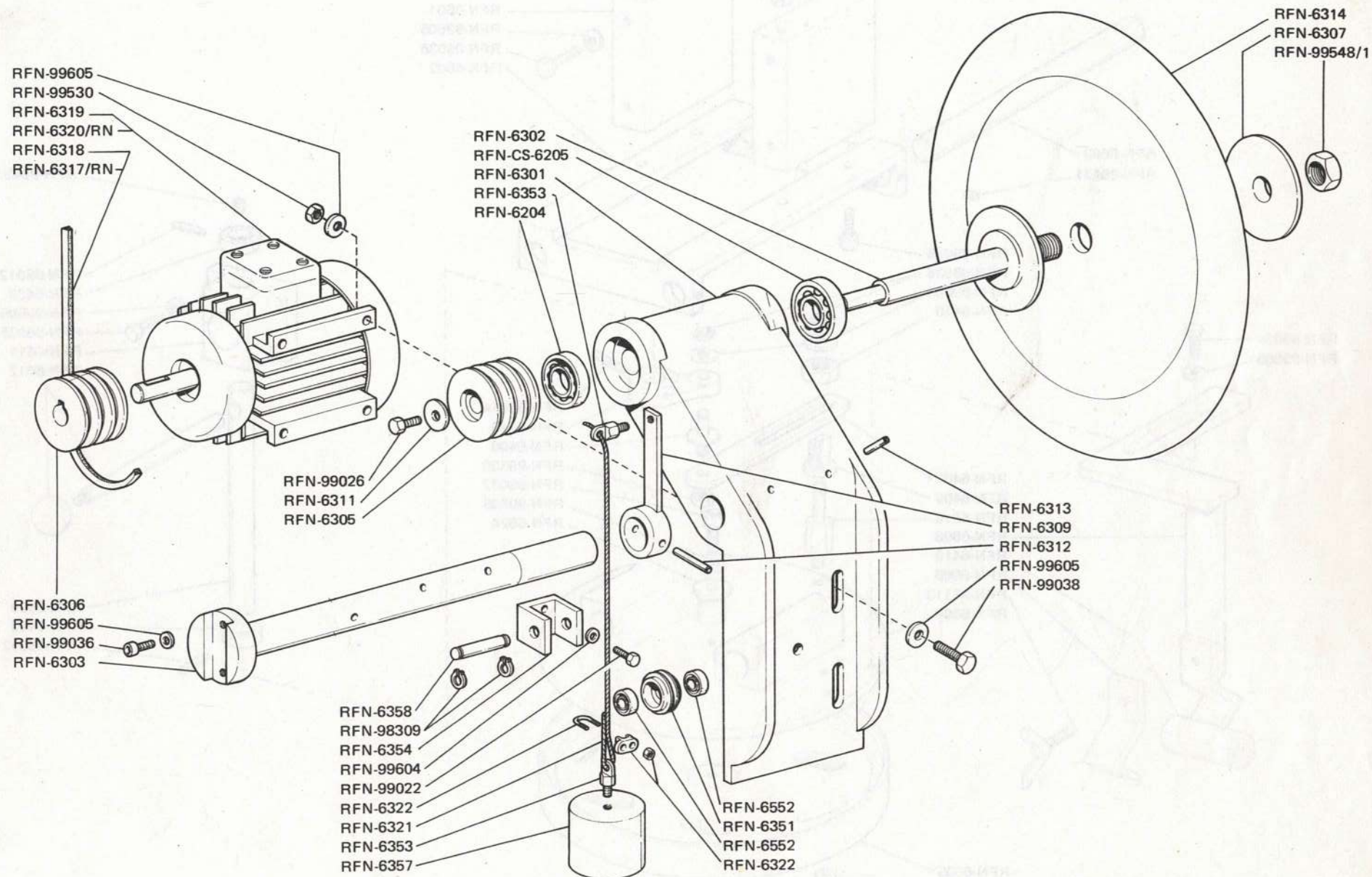


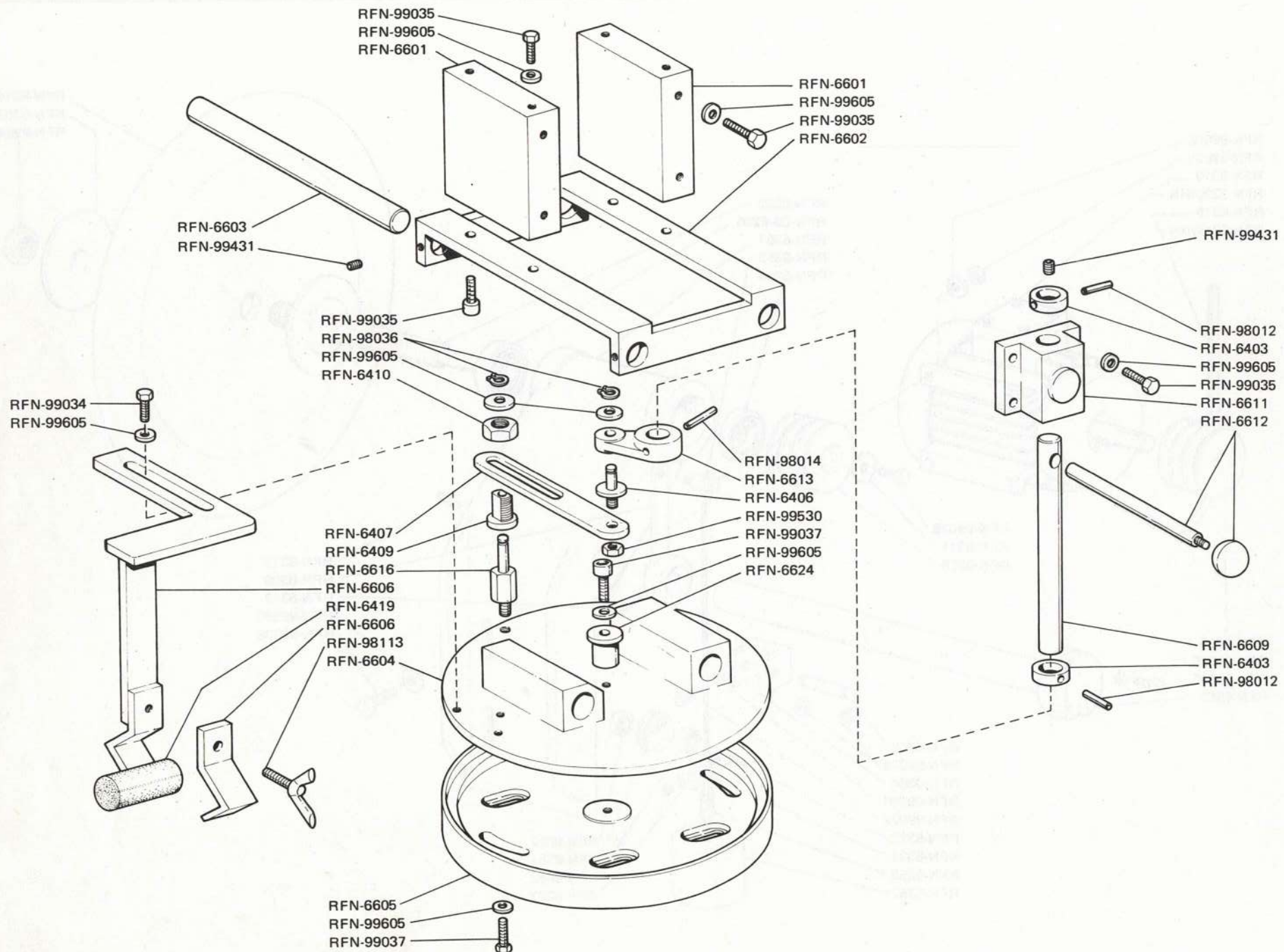
GRUPPO COMPLETO RFN 6850

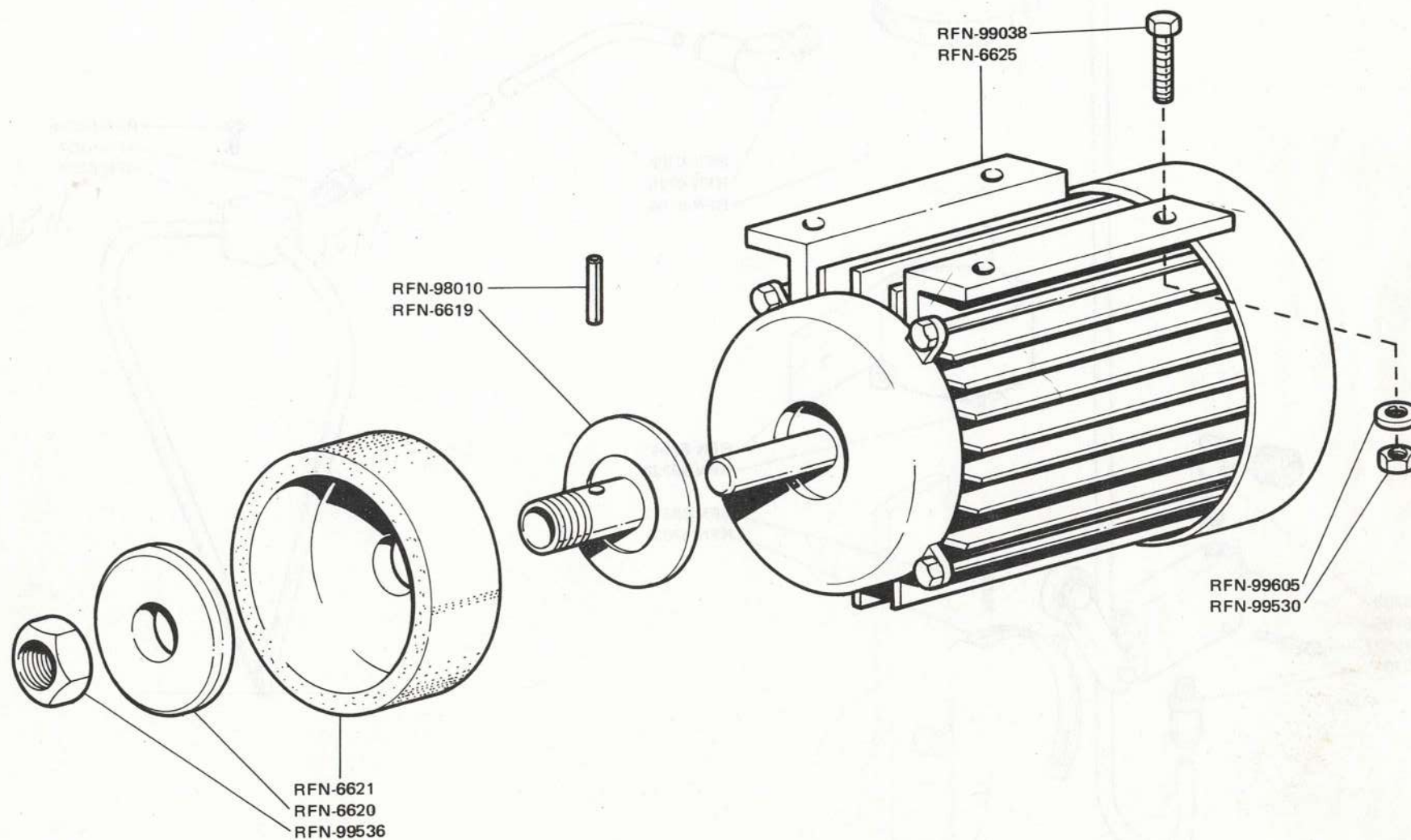


GRUPPO COMPLETO RFN 6970

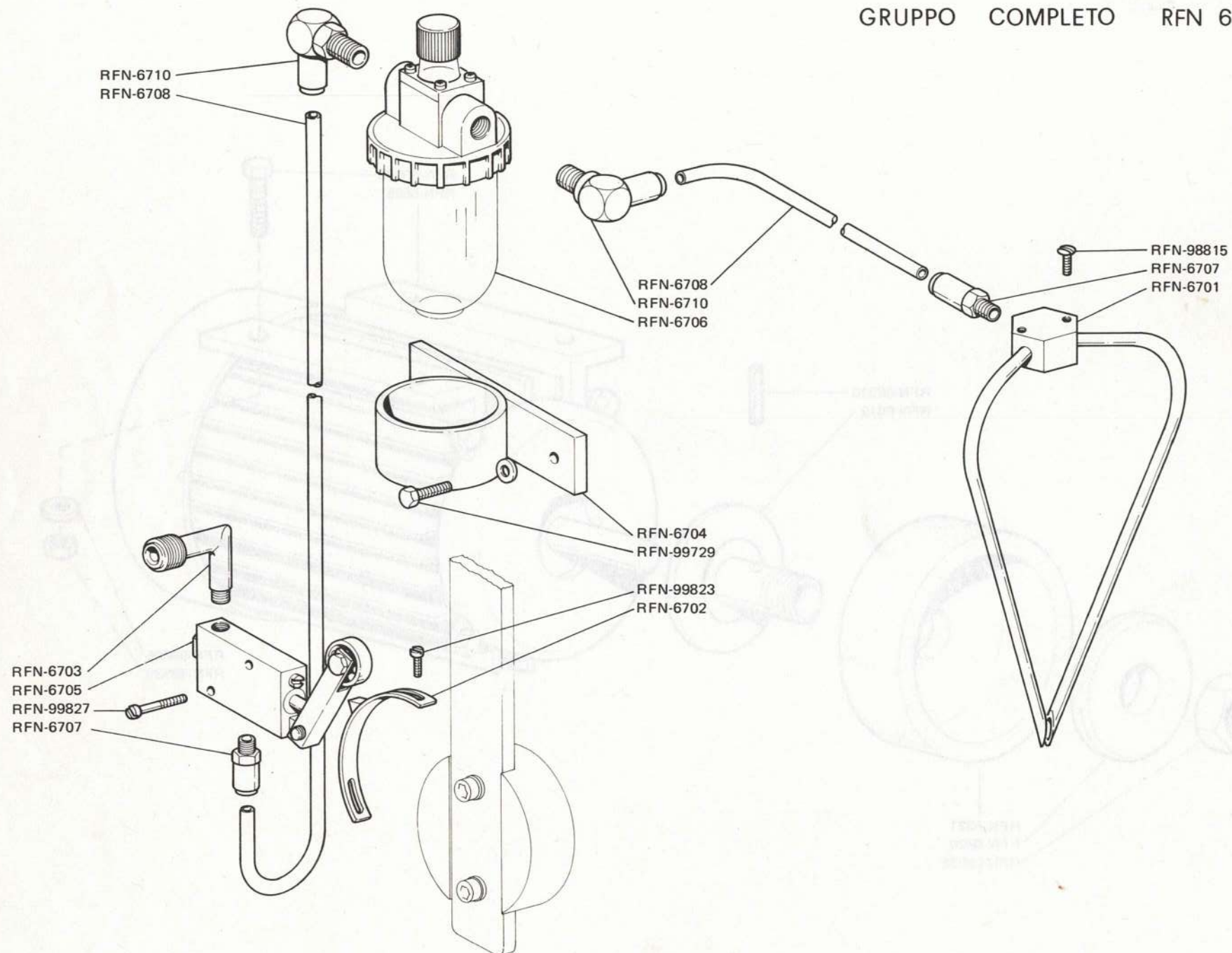


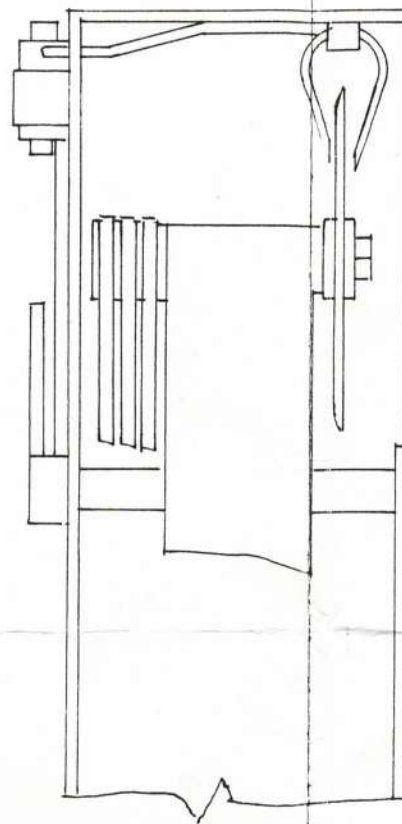
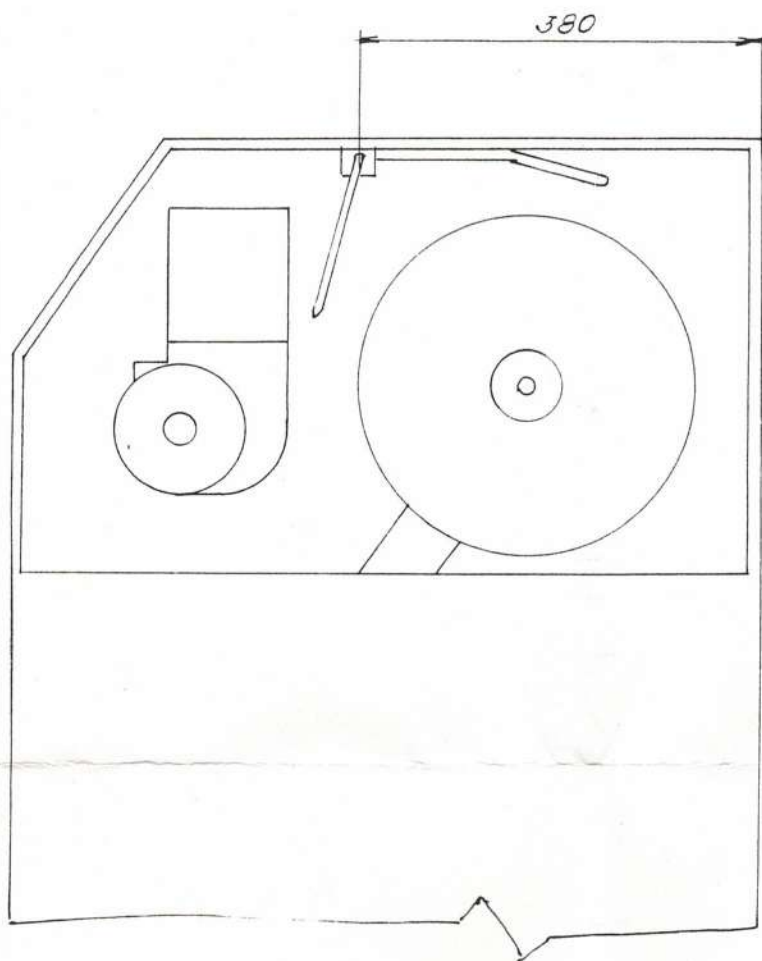




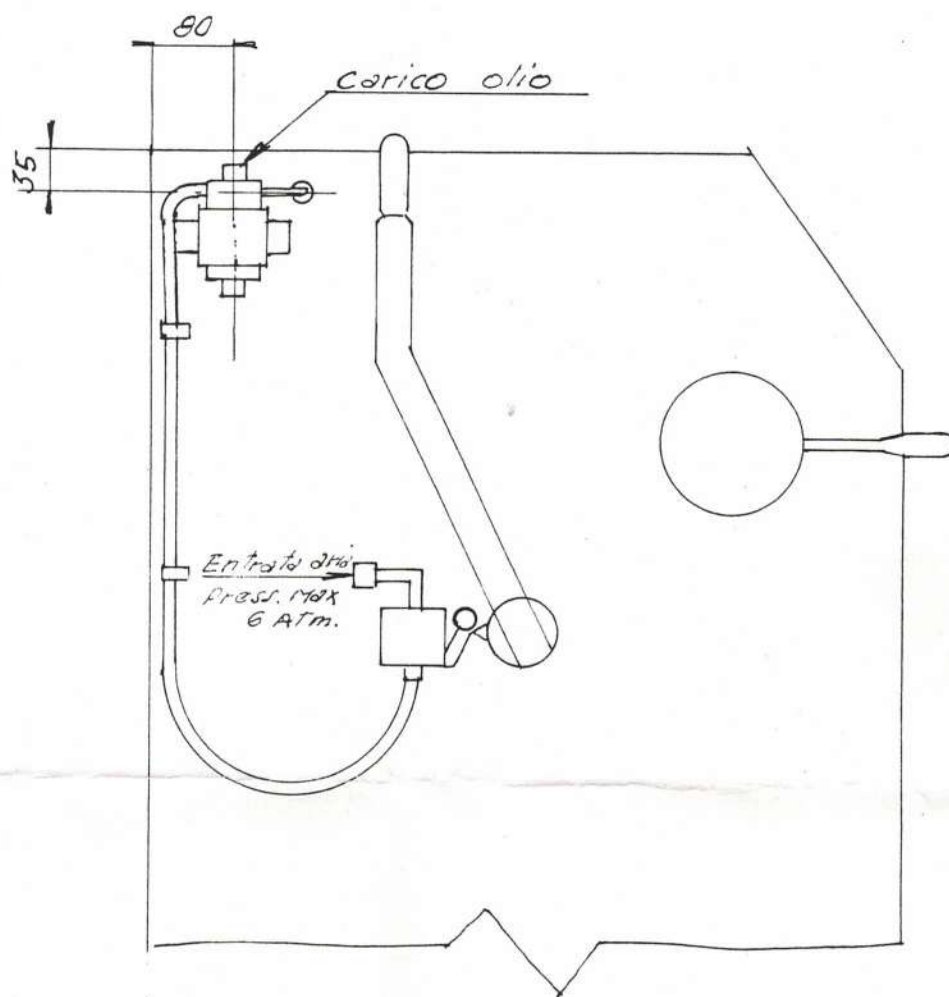


GRUPPO COMPLETO RFN 6700/G





Olio da usare SHELL VEXILLA 117



Macchina TMF---/---L

Schema montaggio

lubrificatore lame

Prov.

Rimoldi SpA - 33, Via Montebello - 20020 Olcella - Milano (Italy)
Tel. (0331) 563.111 - Telex 332299 - 312243 - Telefax (0331) 563.485 - 563.564 -