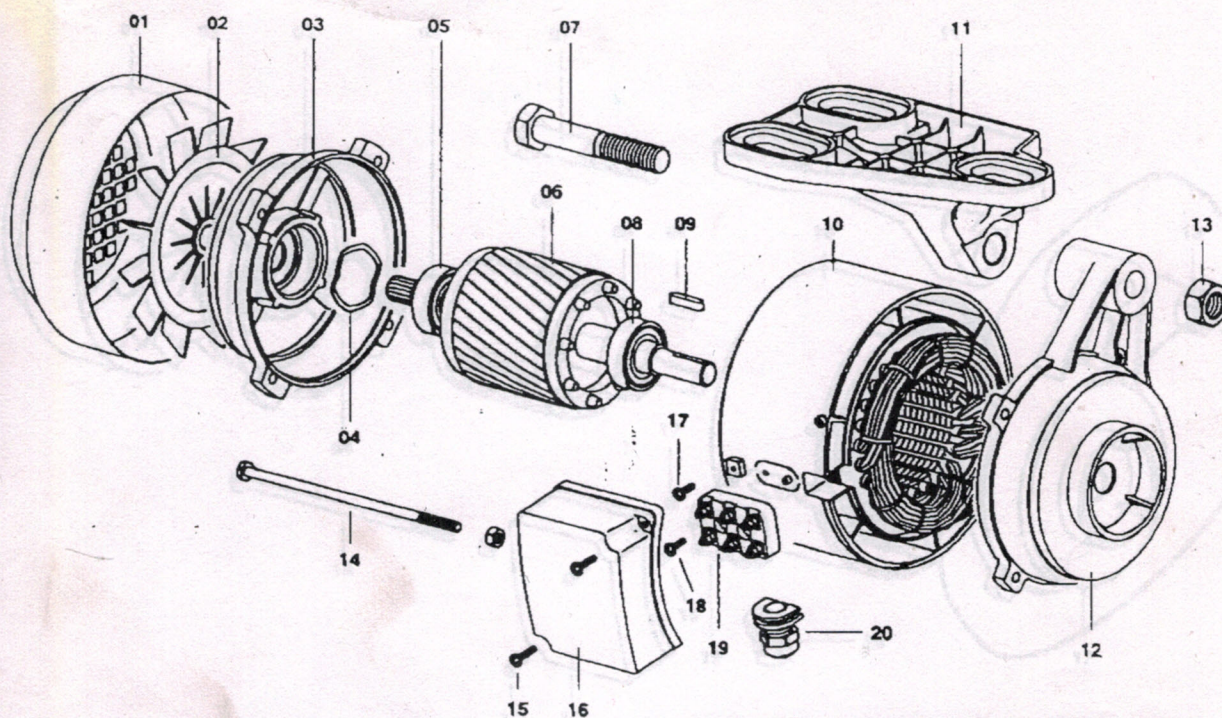


FIR
CASALMAGGIORE

SPARE PARTS FOR INDUCTION MOTORS

1125/26/28/27

SHEET 1 OF 1



INDUCTION MOTOR SERIES 1125/26/28

MOTOR TYPE		1125/26/28 4 poles 1PHASE kW 0,55	1125/26/28 4 poles 3PHASE kW 0,55	
Ref.	DESCRIPTION	CODE	CODE	
01	FAN COVER	1085041	1085041	120.000.127
02	FAN	1414042/3	1414042/3	
03	BACK COVER	1204031	1204031	
04	COMPENSATION RING	LMKAS 40	LMKAS 40	
05	BACK BEARING	6203-ZZ	6203-ZZ	
06	ROTOR SHAFT	1125012 1126012 1128012	1125012 1126012 1128012	MOTOR MOD. 1125 MOTOR MOD. 1126 MOTOR MOD. 1128
07	SCREW	TE M16x90	TE M16x90	
08	FRONT BEARING	6203-ZZ	6203-ZZ	
09	KEY	5x5x25 UNI 6604	5x5x25 UNI 6604	
10	WORKED FRAME	1148002/M	1148002/T	
11	HANGER	1140001	1140001	120000.124 PREZIO: 4.006 DIO: 38%
12	SHIELD	1473003/2	1473003/2	
13	NUT	M16	M16	
14	ROD	TE M5x114 zincked	TE M5x114 zincked	
15	SCREW	Taptite TCC M4x15	Taptite TCC M4x15	
16	JUNCTION BOX COVER	1138092	1138092	
17	SCREW	Taptite TCC M4x8	Taptite TCC M4x8	
18	SCREW	Taptite TCC M4x12	Taptite TCC M4x12	
19	JUNCTION BOX	50/32 6 clamps	50/32 6 clamps	
20	CABLE STOPPER	AP 3/8IN	AP 3/8IN	
21	--			
»	CAPACITOR	µF 31,5 450V		
»	CAPACITOR HOLDER	--		