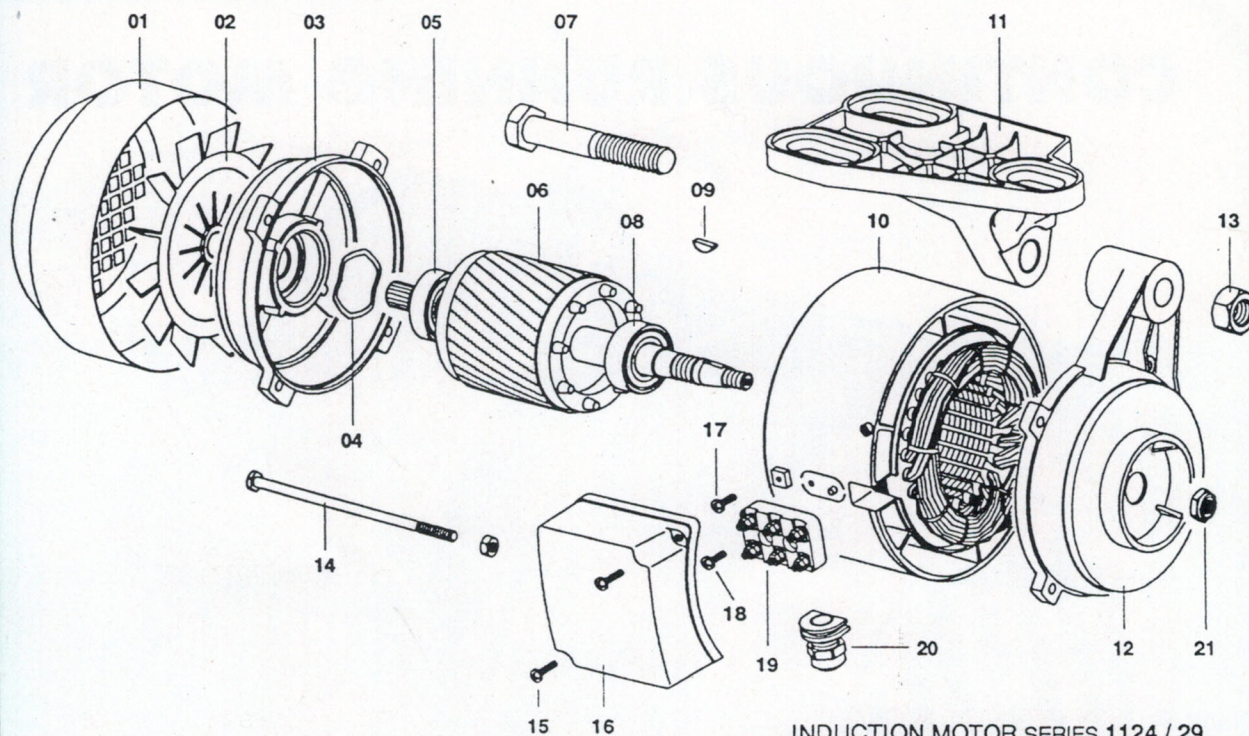


IT'S AN EUROPEAN PRODUCT

CONTINUOUS RUNNING MOTOR

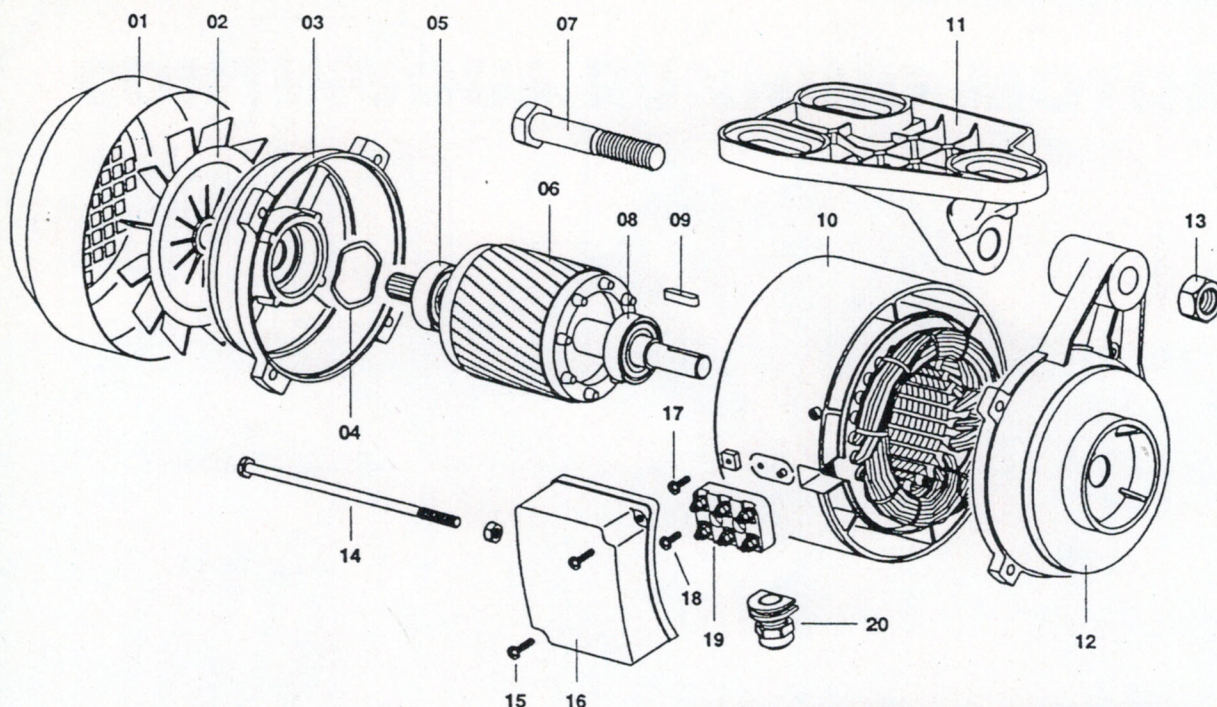


FIR s.p.a. Fabbriche Industrie Riunite - CASALMAGGIORE (Cremona) Italy
Via Roma, 19 - Tel. (0375) 43831-32-33 - 41620 • Telex 310014 • Fax 0375-41612 • Cable: Riunite



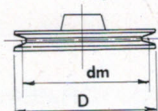
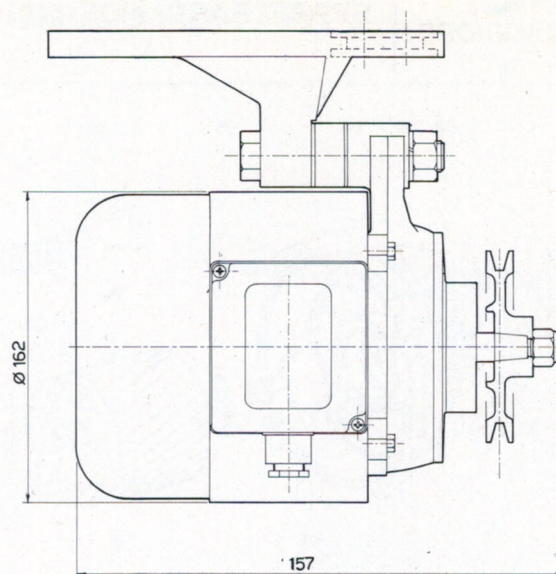
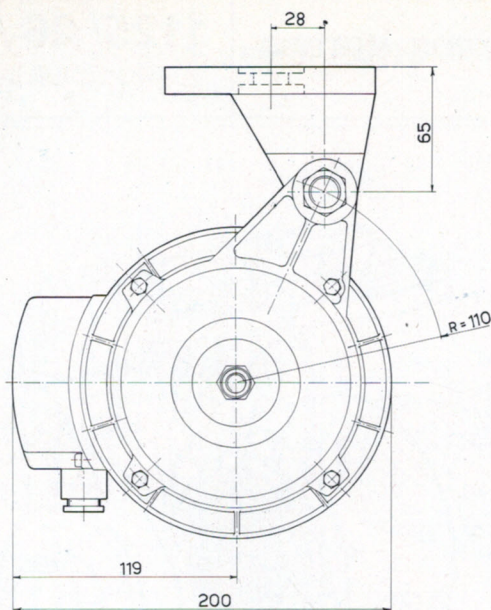
INDUCTION MOTOR SERIES 1124 / 29

MOTOR TYPE		1124 4 poles 1PHASE kW 0,55	1124 4 poles 3PHASE kW 0,55
Ref.	DESCRIPTION	CODE	CODE
01	FAN COVER	1085041	1085041
02	FAN	1414042/3	1414042/3
03	BACK COVER	1204031	1204031
04	COMPENSATION RING	LMKAS 40	LMKAS 40
05	BACK BEARING	6203-ZZ	6203-ZZ
06	ROTOR SHAFT	1124012	1124012
07	SCREW	TE M16x90	TE M16x90
08	FRONT BEARING	6203-ZZ	6203-ZZ
09	KEY	4x5 UNI 6606	4x5 UNI 6606
10	WORKED FRAME	1148002/M	1148002/T
11	HANGER	1140001	1140001
12	SHIELD	1473003/2	1473003/2
13	NUT	M16	M16
14	TIRANTE	TE M5x114 zincked	TE M5x114 zincked
15	SCREW	Taptite TCC M4x15	Taptite TCC M4x15
16	JUNCTION BOX COVER	1138092	1138092
17	SCREW	Taptite TCCM4x8	Taptite TCCM4x8
18	SCREW	Taptite TCCM4x12	Taptite TCCM4x12
19	JUNCTION BOX	50/32 6 clamps	50/32 6 clamps
20	CABLE STOPPER	AP 3/8IN	AP 3/8IN
21	SELF BLOKING NUT	M10x1 alto zincked	M10x1 alto zincked
»	CAPACITOR	µF 31,5 450V	
»	CAPACITOR HOLDER	--	



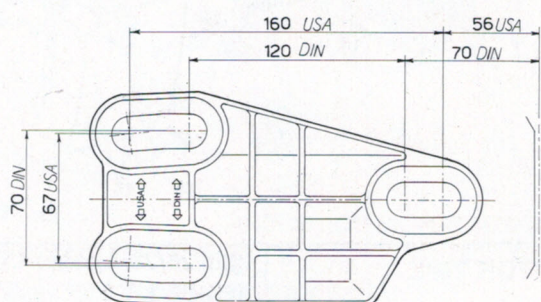
INDUCTION MOTOR SERIES 1125 / 26 / 28

MOTOR TIPE		1125/26/28 4 poles 1PHASE kW 0,55	1125/26/28 4 poles 3PHASE kW 0,55	
Ref.	DESCRIPTION	CODE	CODE	
01	FAN COVER	1085041	1085041	
02	FAN	1414042/3	1414042/3	
03	BACK COVER	1204031	1204031	
04	COMPENSATION RING	LMKAS 40	LMKAS 40	
05	BACK BEARING	6203-ZZ	6203-ZZ	
06	ROTOR SHAFT	1125012 1126012 1128012	1125012 1126012 1128012	MOTOR MOD. 1125 MOTOR MOD. 1126 MOTOR MOD. 1128
07	SCREW	TE M16x90	TE M16x90	
08	FRONT BEARING	6203-ZZ	6203-ZZ	
09	KEY	5x5x25 UNI 6604	5x5x25 UNI 6604	
10	WORKED FRAME	1148002/M	1148002/T	
11	HANGER	1140001	1140001	
12	SHIELD	1473003/2	1473003/2	
13	NUT	M16	M16	
14	ROD	TE M5x114 zincked	TE M5x114 zincked	
15	SCREW	Taptite TCC M4x15	Taptite TCC M4x15	
16	JUNCTION BOX COVER	1138092	1138092	
17	SCREW	Taptite TCC M4x8	Taptite TCC M4x8	
18	SCREW	Taptite TCC M4x12	Taptite TCC M4x12	
19	JUNCTION BOX	50/32 6 clamps	50/32 6 clamps	
20	CABLE STOPPER	AP 3/8IN	AP 3/8IN	
21	--			
»	CAPACITOR	μF 31,5 450V		
»	CAPACITOR HOLDER	--		



(DIMENSIONI IN mm.) DIN 42692 L

dm	35	40	45	50	58	63	71	80	90	100	112	125
D	40	45	51	56	62	69	77	86	96	106	118	131



MOTOR EXECUTION

POWER: W 550 - W 375 R.P.M. 1400/1725

VOLTAGE 220 - 240 / 380 - 415 50/60 Hz - V 220

TYPE

MOD. 1124 **SCHAFT END CONICAL**

MOD. 1125 **SCHAFT END CILINDRICAL Ø 14**

MOD. 1126 **SCHAFT END CILINDRICAL Ø 16**

MOD. 1128 **SCHAFT END CILINDRICAL Ø 19**

MOD. 1129 **SCHAFT END CONICAL 2/4 POLES - 4/8 POLES**



FIR Elettromeccanica S.p.A.

CASALMAGGIORE (CREMONA) Italy

Via Roma, 19 - Tel. (0375) 43831-32-33 - 41620

Telex 310014 - Fax 0375 - 41612 • Cable : Riunite