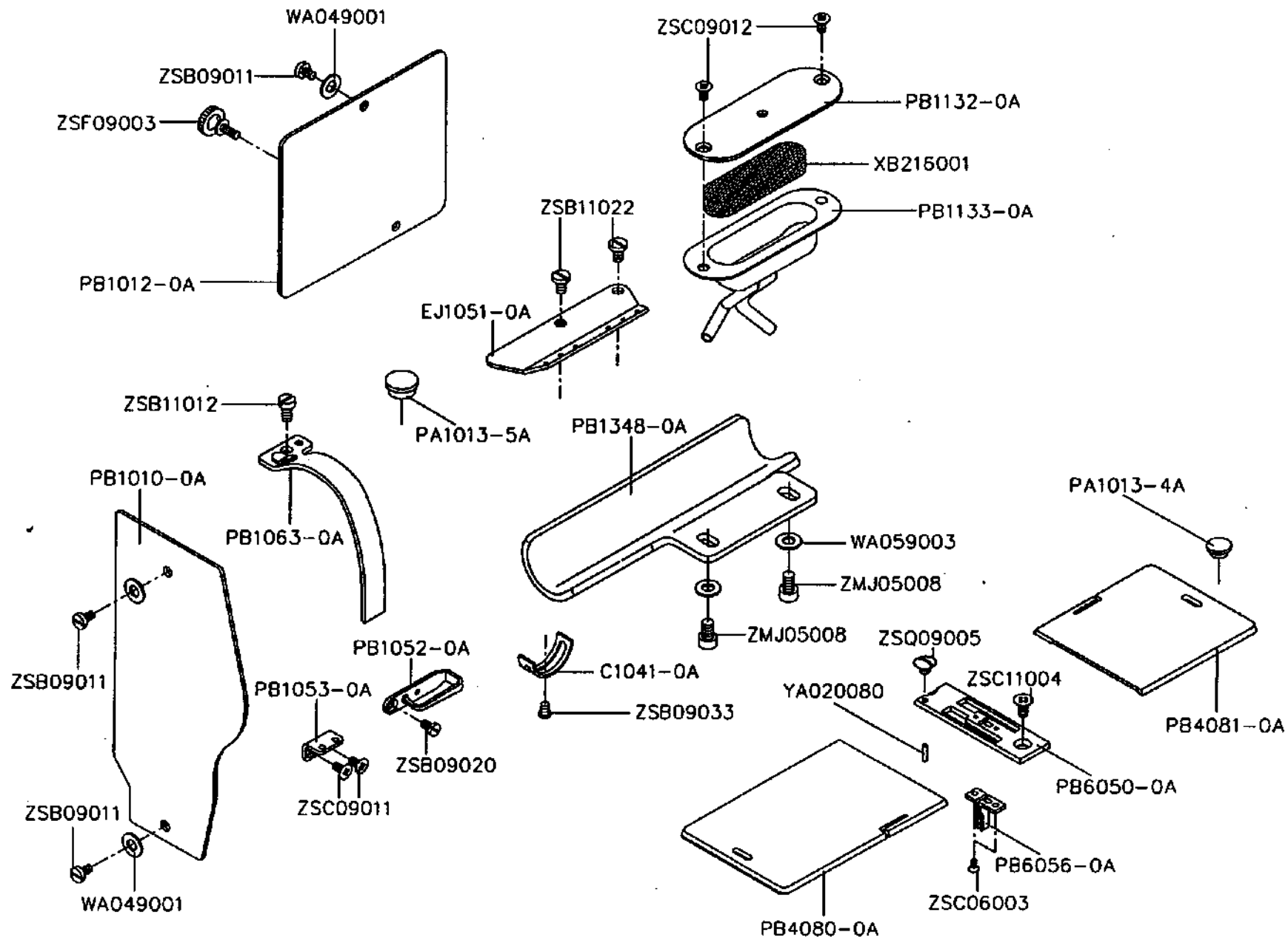


SW-VNK

SPARE PART BOOK

	INDEX	PAGE
A、	ARM BED AND IT'S ACCESSORIES -----	2-3
B、	UPPER THREAD TENSION REGULATOR MECHANISM -	4-5
C、	UPPER SHAFT MECHANISM -----	6-7
D、	NEEDLE BAR AND TAKE-UP LEVER MECHANISM ---	8-11
E、	NEEDLE ROCKING MECHANISM -----	12-15
F、	MAIN NEEDLE & CAM MECHANISM -----	16-19
G、	PRESSER FOOT MECHANISM -----	20-23
H、	FEED MECHANISM -----	24-27
I、	LOWER SHAFT AND ROTARY HOOK MECHANISM ----	28-31
J、	ACCESSORIES -----	32-33
K、	NUMERICAL PARTS-LIST -----	34-37

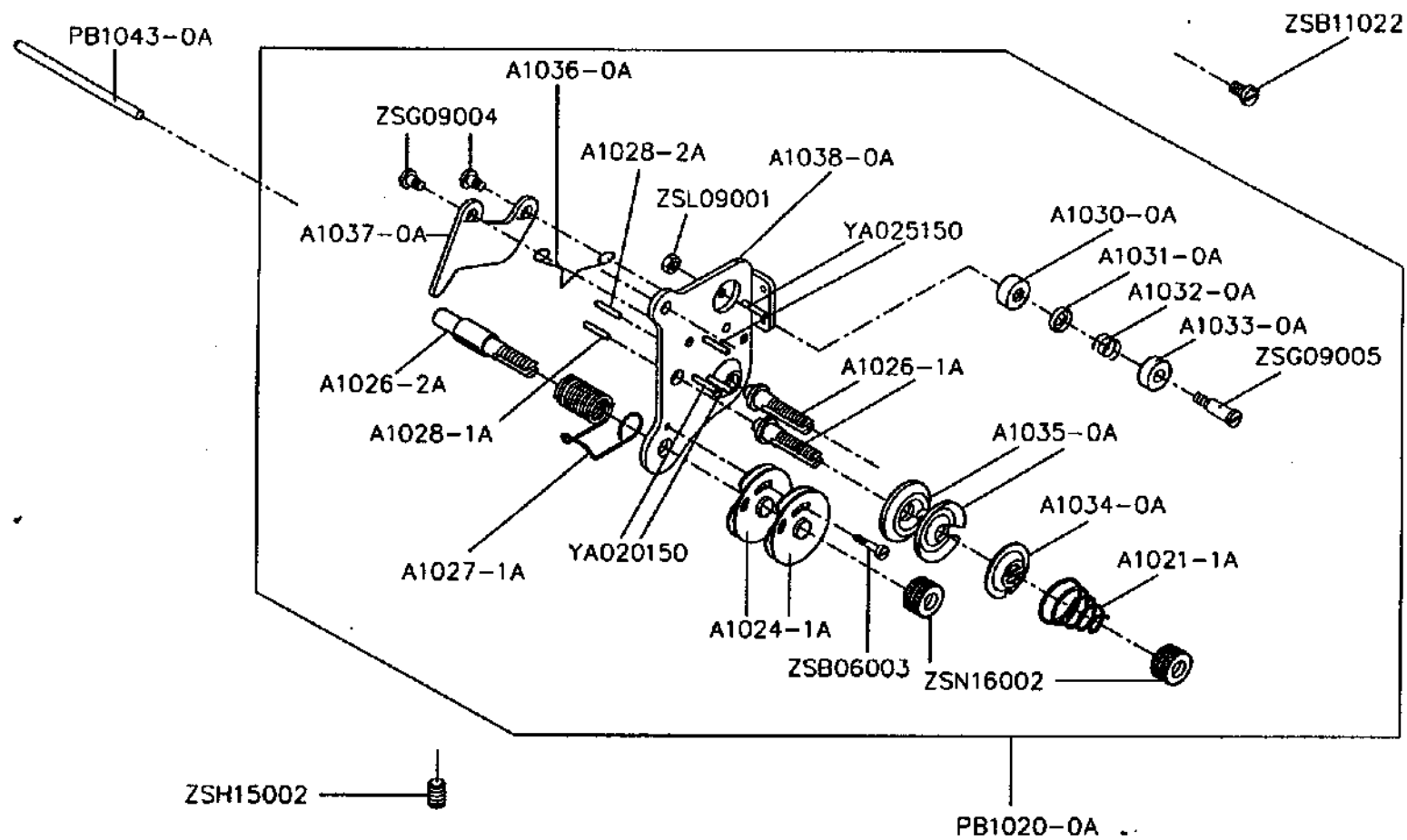
ARM BED AND IT'S ACCESSORIES



ARM BED AND IT'S ACCESSORIES

Part No	Name of Part	Q, TY	Remarks
C1041-0A	Stopper -----	1	
EJ1051-0A	Top cover thread guide -----	1	
PA1013-4A	Oil cap -----	1	
PA1013-5A	Oil cap -----	1	
PB1010-0A	Face plate -----	1	
PB1012-0A	Protecting cover -----	1	
PB1052-0A	Thread guide wire -----	1	
PB1053-0A	Thread guide wire -----	1	
PB1063-0A	Thread take-up cover -----	1	
PB1132-0A	Cover plate -----	1	
PB1133-0A	Oil tank -----	1	
PB1348-0A	Protecting cover -----	1	
PB4080-0A	Slide plate (left) -----	1	
PB4081-0A	Slide plate (right) -----	1	
PB6050-0A	Needle plate -----	1	
PB6056-0A	Protecting needle slide -----	1	
WA049001	Washer -----	3	
WA059003	Washer -----	2	
XB216001	Felt -----	1	
YA020080	Pin -----	1	
ZMJ05008	Screw (M5×0.8×10) -----	2	
ZSB09011	Screw (9/64-40×6.5) -----	3	
ZSB09020	Screw (9/64-40×6) -----	1	
ZSB09033	Screw (9/64-40×4) -----	1	
ZSB11012	Screw (11/64-40×8) -----	1	
ZSB11022	Screw (11/64-40×7) -----	2	
ZSC06003	Screw (3/32-56×3) -----	2	
ZSC09011	Screw (9/64-40×4.5) -----	2	
ZSC09012	Screw (9/64-40×7) -----	2	
ZSC11004	Screw (11/64-40×8) -----	1	
ZSF09003	Screw (9/64-40×8) -----	1	
ZSQ09005	Screw (9/64-40×4) -----	1	

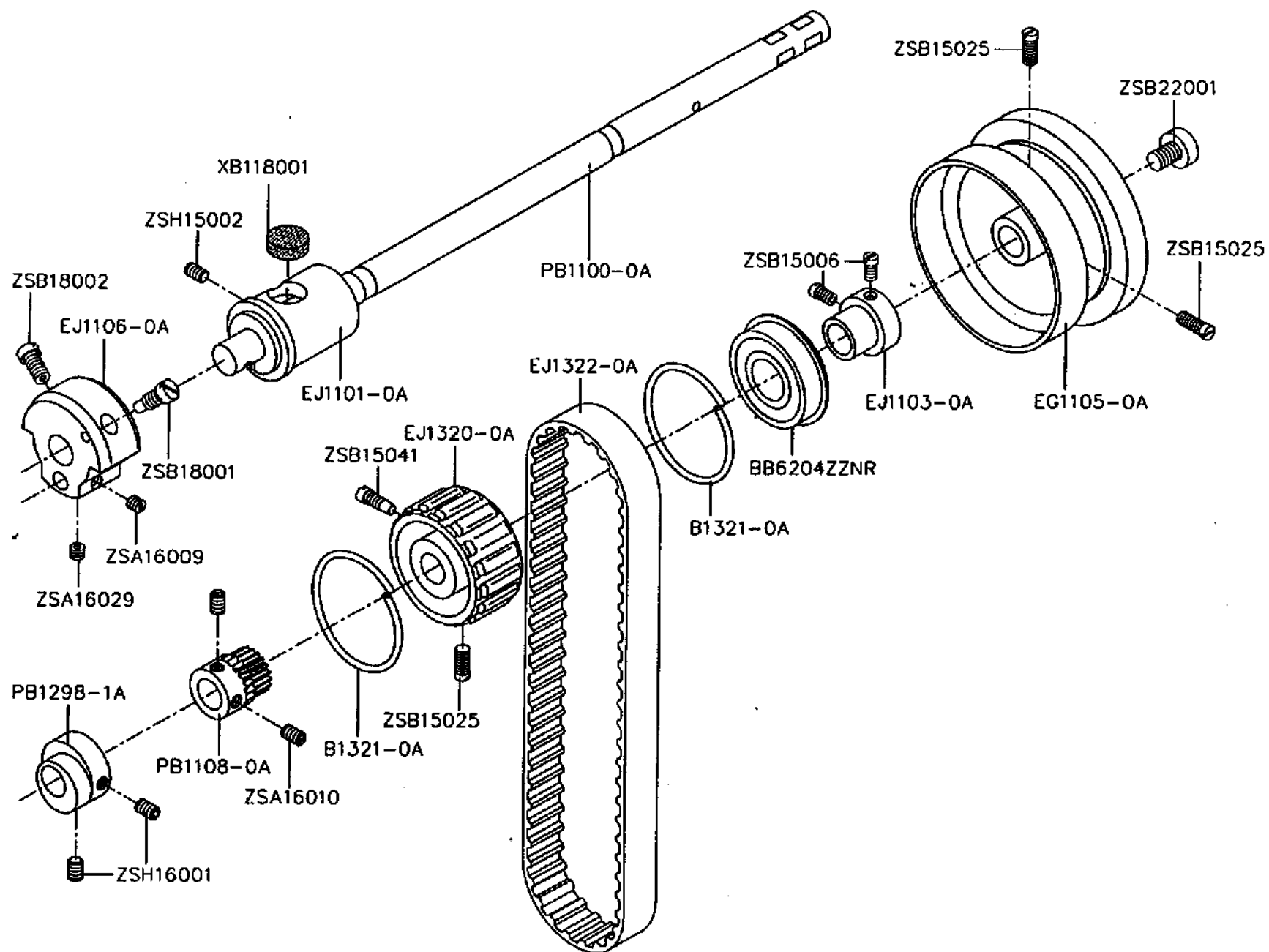
UPPER THREAD TENSION REGULATOR MECHANISM



UPPER THREAD TENSION REGULATOR MECHANISM

Part No	Name of Part	Q. TY	Remarks
A1021-1A	Thread tension spring	2	
A1024-1A	Tension regulator bracket	2	
A1026-1A	Thread tension stud	2	
A1026-2A	Thread tension stud	1	
A1027-1A	Thread take-up spring	1	
A1028-1A	Tension releasion pin	1	
A1028-2A	Tension releasion pin	1	
A1030-0A	Thread guide disk	1	
A1031-0A	Thread guide disk	1	
A1032-0A	Spring	1	
A1033-0A	Thread guide bracket	1	
A1034-0A	Tension regulator presser disc	2	
A1035-0A	Tension disc	4	
A1036-0A	Tension regulator spring	1	
A1037-0A	Tension releasion plate	1	
A1038-0A	Upper thread tension plate	1	
PB1020-0A	Thread tension reguliator assy.	1	
PB1043-0A	Tension releasion pin	1	
YA020150	Pin	2	
YA025150	Pin	2	
ZSB06003	Screw (3/32-56×12)	1	
ZSB11022	Screw (11/64-40×7)	1	
ZSG09004	Screw (9/64-40×2.5)	2	
ZSG09005	Screw (9/64-40×7)	1	
ZSH15002	Screw (15/64-28×8)	1	
ZSL09001	Nut (9/64-40×3)	1	
ZSN16002	Nut (1/4-40×12)	3	

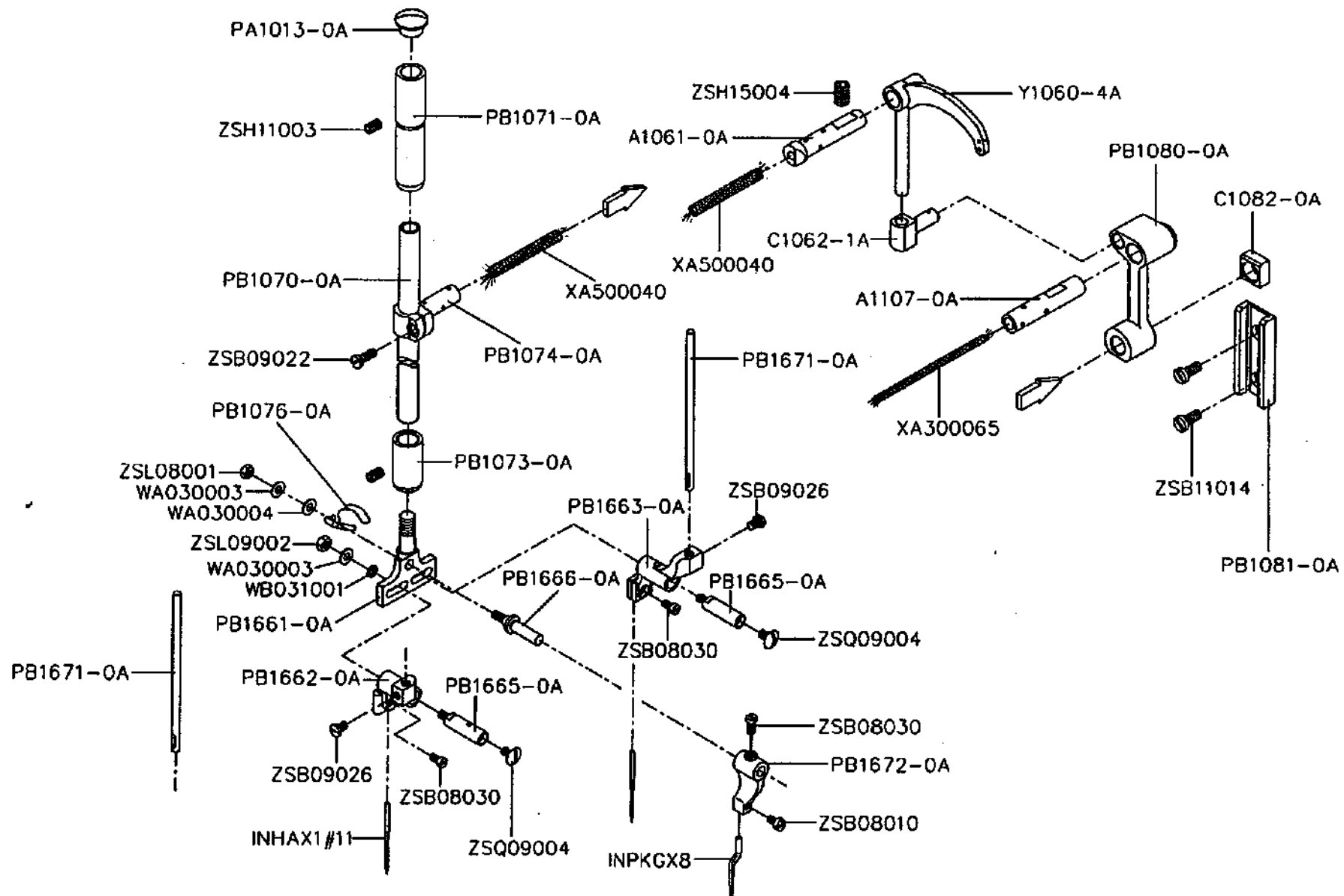
UPPER SHAFT MECHANISM



UPPER SHAFT MECHANISM

Part No	Name of Part	Q. TY	Remarks
B1321-0A	Spring flange	2	
BB6204ZZNR	Ball bearing	1	
EG1105-0A	Pulley	1	
EJ1101-0A	Upper shaft bushing	1	
EJ1103-0A	Upper shaft bushing	1	
EJ1106-0A	Crank cam	1	
EJ1320-0A	Belt sprocket	1	
EJ1322-0A	Timing belt	1	
PB1100-0A	Upper shaft	1	
PB1108-0A	Gear	1	
PB1298-1A	Eccentric	1	
XB118001	Felt	1	
ZSA16009	Screw (1/4-40 × 7)	1	
ZSA16010	Screw (1/4-40 × 4.5)	2	
ZSA16029	Screw (1/4-40 × 3.5)	1	
ZSB15006	Screw (15/64-28 × 8.5)	2	
ZSB15025	Screw (15/64-28 × 12)	3	
ZSB15041	Screw (15/64-28 × 9)	1	
ZSB18001	Screw (9/32-28 × 16)	1	
ZSB18002	Screw (9/32-28 × 13)	1	
ZSB22001	Screw (11/32-28 × 13)	1	
ZSH15002	Screw (15/64-28 × 8)	1	
ZSH16001	Screw (1/4-40 × 6)	2	

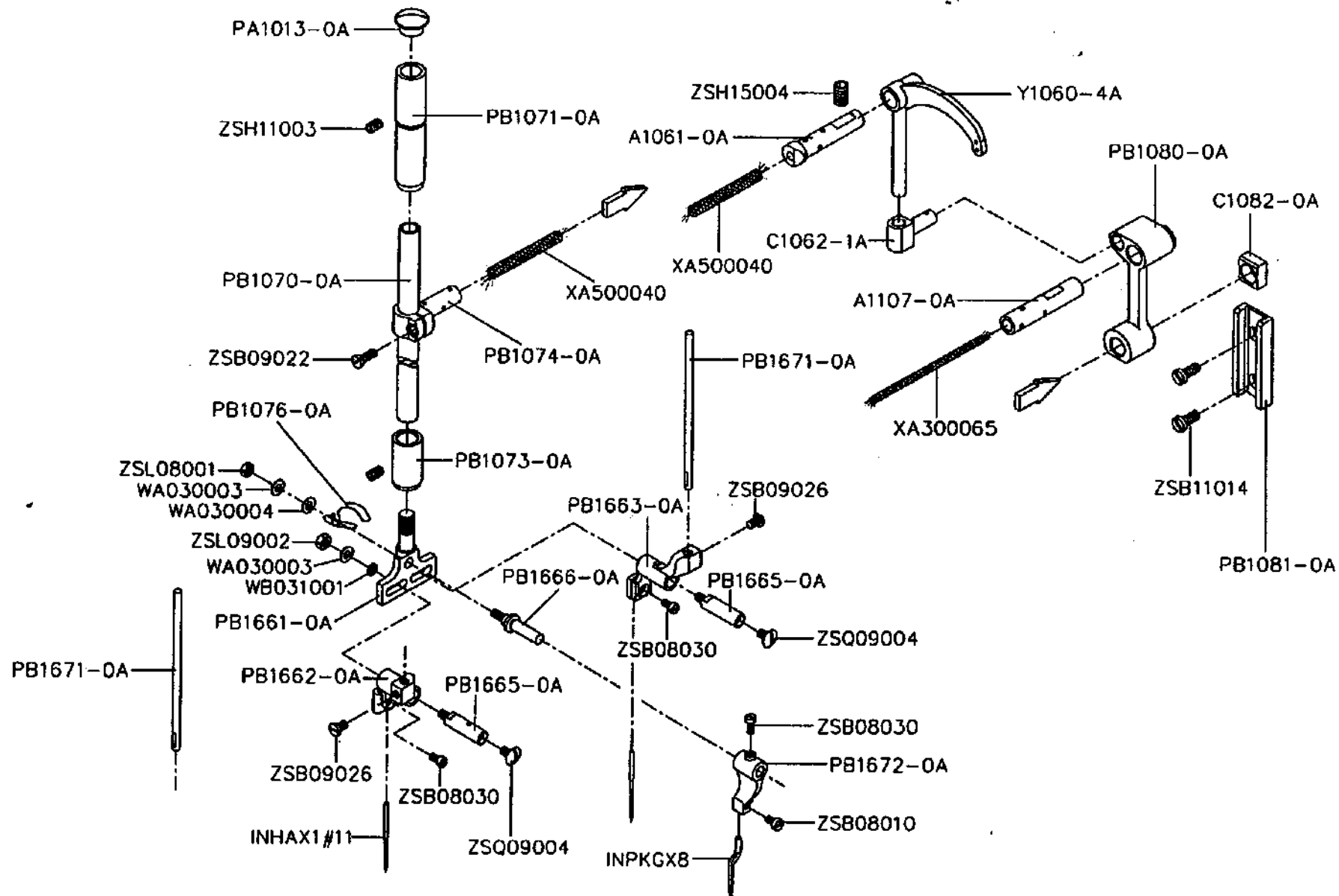
NEEDLE BAR AND TAKE-UP LEVER MECHANISM



NEEDLE BAR AND TAKE-UP LEVER MECHANISM

Part No	Name of Part	Q. TY	Remarks
A1061-0A	Take-up lever support stud	1	
A1107-0A	Needle bar crank pin	1	
C1062-1A	Needle bar connecting link	1	
C1082-0A	Needle bar guide slide block	1	
INHAX1#11	Needle	2	
INPKGX8	Guide needle (piercer)	1	
PA1013-0A	Needle bar upper bushing cap	1	
PB1070-0A	Needle bar	1	
PB1071-0A	Needle bar bushing (upper)	1	
PB1073-0A	Needle bar bushing (lower)	1	
PB1074-0A	Needle bar connecting stud	1	
PB1076-0A	Needle bar thread guide	1	
PB1080-0A	Needle bar connecting crank rod	1	
PB1081-0A	Needle bar connecting link plate	1	
PB1661-0A	Needle allocate block	1	
PB1662-0A	Needle clamp (left)	1	
PB1663-0A	Needle clamp (right)	1	
PB1665-0A	Needle clamp shaft	2	
PB1666-0A	Guide needle supporting shaft	1	
PB1671-0A	Vertical guide shaft	2	
PB1672-0A	Guide needle clamp	1	
Y1060-4A	Thread take-up	1	

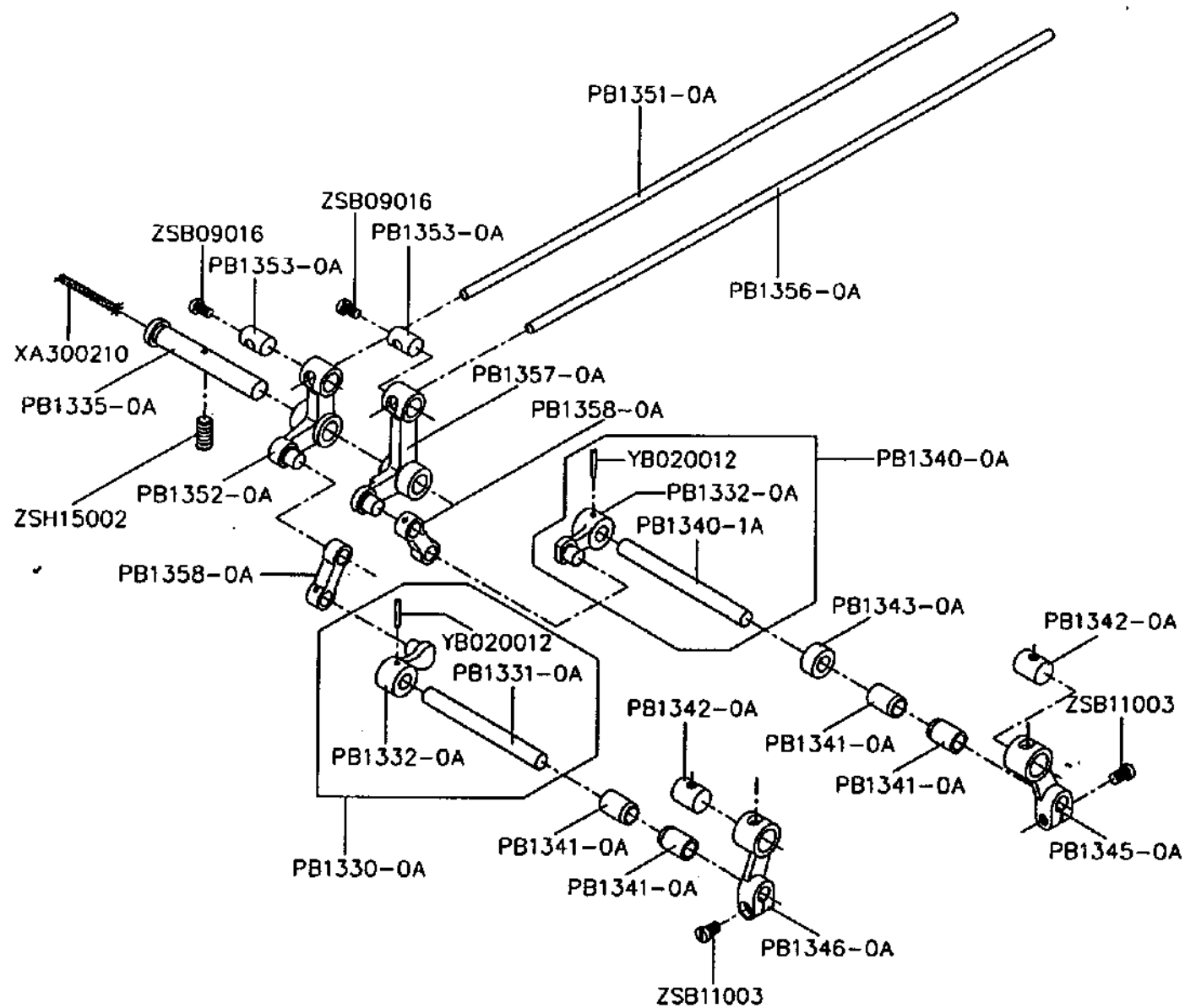
NEEDLE BAR AND TAKE-UP LEVER MECHANISM



NEEDLE BAR AND TAKE-UP LEVER MECHANISM

Part No	Name of Part	Q, TY	Remarks
WA030003	Washer	3	
WA030004	Washer	1	
WB031001	Spring washer	2	
XA300065	Oil wick	1	
XA500040	Oil wick	2	
ZSB08010	Screw (1/8-44 × 4.6)	1	
ZSB08030	Screw (1/8-44 × 5.5)	3	
ZSB09022	Screw (9/64-40 × 8)	1	
ZSB09026	Screw (9/64-40 × 5)	2	
ZSB11014	Screw (11/64-40 × 8.5)	2	
ZSH11003	Screw (11/64-40 × 8.5)	2	
ZSH15004	Screw (15/64-28 × 20)	1	
ZSL08001	Nut (1/8-44 × 2)	1	
ZSL09002	Nut (9/64-40 × 2.5)	2	
ZSQ09004	Screw (9/64-40 × 6)	2	

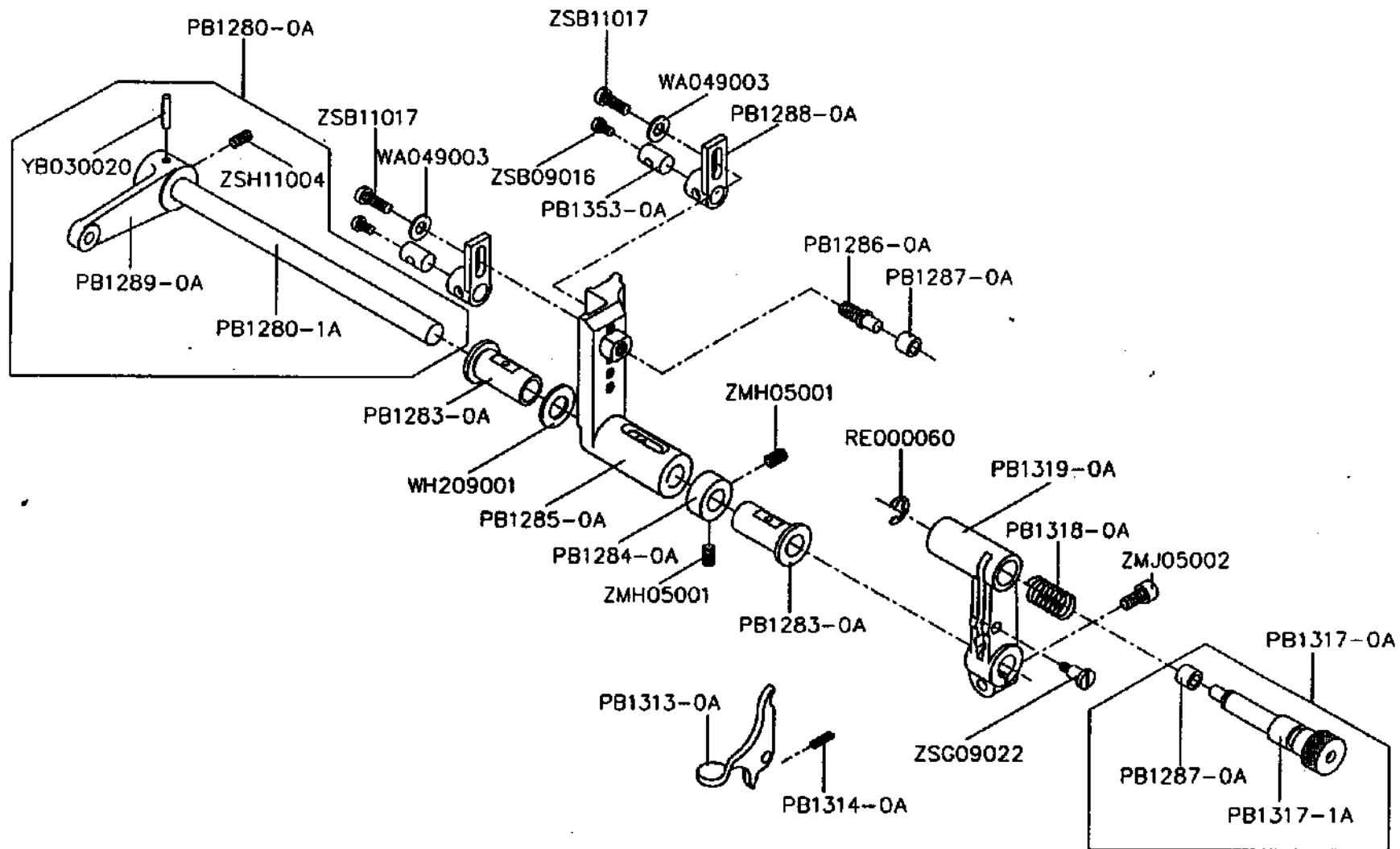
NEEDLE ROCKING MECHANISM (1/2)



NEEDLE ROCKING MECHANISM (1/2)

Part No	Name of Part	Q. TY	Remarks
PB1330-0A	----- Needle vibrating arm set (left) -----	1	
PB1331-0A	----- Needle vibrating shaft -----	1	
PB1332-0A	----- Needle vibrating arm -----	2	
PB1335-0A	----- Bell crank shaft -----	1	
PB1340-0A	----- Needle vibrating arm set (right) -----	1	
PB1340-1A	----- Needle vibrating shaft -----	1	
PB1341-0A	----- Needle vibrating shaft hushing -----	4	
PB1342-0A	----- Vibrating bushing -----	2	
PB1343-0A	----- Spacer -----	1	
PB1345-0A	----- Needle vimrating arm (front right) -----	1	
PB1346-0A	----- Needle vibrating arm (front left) -----	1	
PB1351-0A	----- Flank rod (short) -----	1	
PB1352-0A	----- Bell crank (small) -----	1	
PB1353-0A	----- Flank rod bushing -----	2	
PB1356-0A	----- Flank rod (long) -----	1	
PB1357-0A	----- Bell crank (large) -----	1	
PB1358-0A	----- Vibrating connecting link -----	2	
XA300210	----- Oil wick -----	1	
YB020012	----- Taper pin -----	2	
ZSB09016	----- Screw (9/64-40 × 6) -----	2	
ZSB11003	----- Screw (11/64-40 × 9) -----	2	
ZSH15002	----- Screw (15/64-28 × 8) -----	1	

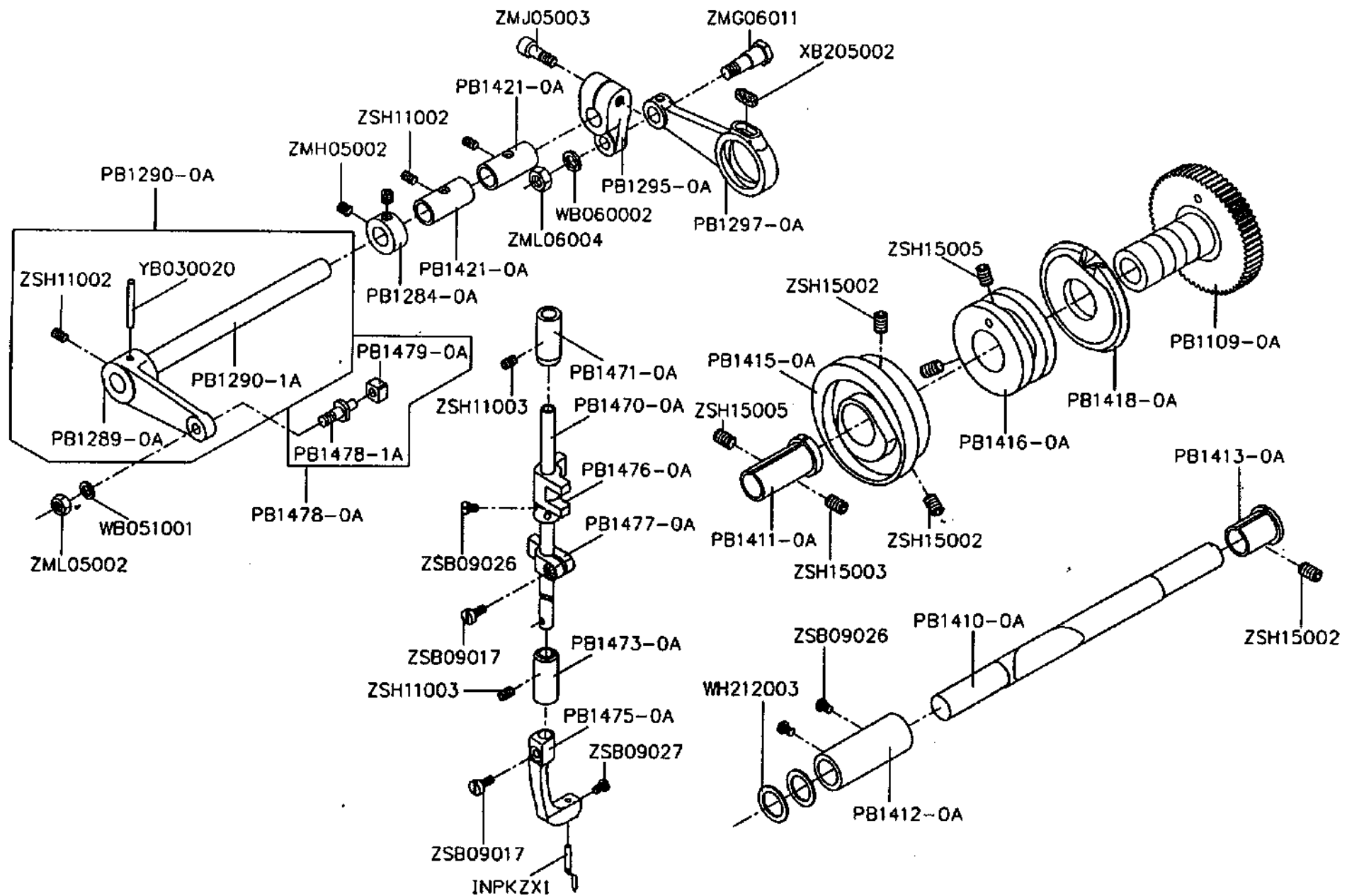
NEEDLE ROCKING MECHANISM (2/2)



NEEDLE ROCKING MECHANISM (2/2)

Part No	Name of Part	Q, TY	Remarks
PB1280-0A	- Presser moving arm set -----	1	
PB1280-1A	- Presser moving shaft -----	1	
PB1283-0A	- Needle vibrating lever shaft bushing -----	2	
PB1284-0A	- Collar -----	1	
PB1285-0A	- Needle vibrating lever -----	1	
PB1286-0A	- Needle vibrating lever roller shaft -----	1	
PB1287-0A	- Roller -----	2	
PB1288-0A	- Slider -----	2	
PB1289-0A	- Presser movig arm -----	1	
PB1313-0A	- Presser activating lever -----	1	
PB1314-0A	- Spring -----	1	
PB1317-0A	- Lever base roller shaft set -----	1	
PB1317-1A	- Lever base roller shaft -----	1	
PB1318-0A	- Spring -----	1	
PB1319-0A	- Presser activating lever base -----	1	
PB1353-0A	- Flank rod hushing -----	2	
RE000060	- E-ring -----	1	
WA049003	- Washer -----	2	
WH209001	- Washer -----	1	
YB030020	- Taper pin -----	1	
ZMH05001	- Screw (M5×0.8×5) -----	2	
ZMJ05002	- Screw (M5×0.8×12) -----	1	
ZSB09016	- Screw (9/64-40×6) -----	2	
ZSB11017	- Screw (11/64-40×12) -----	2	
ZSG09022	- Screw (9/64-40×5) -----	1	
ZSH11004	- Screw (11/64-40×5) -----	1	

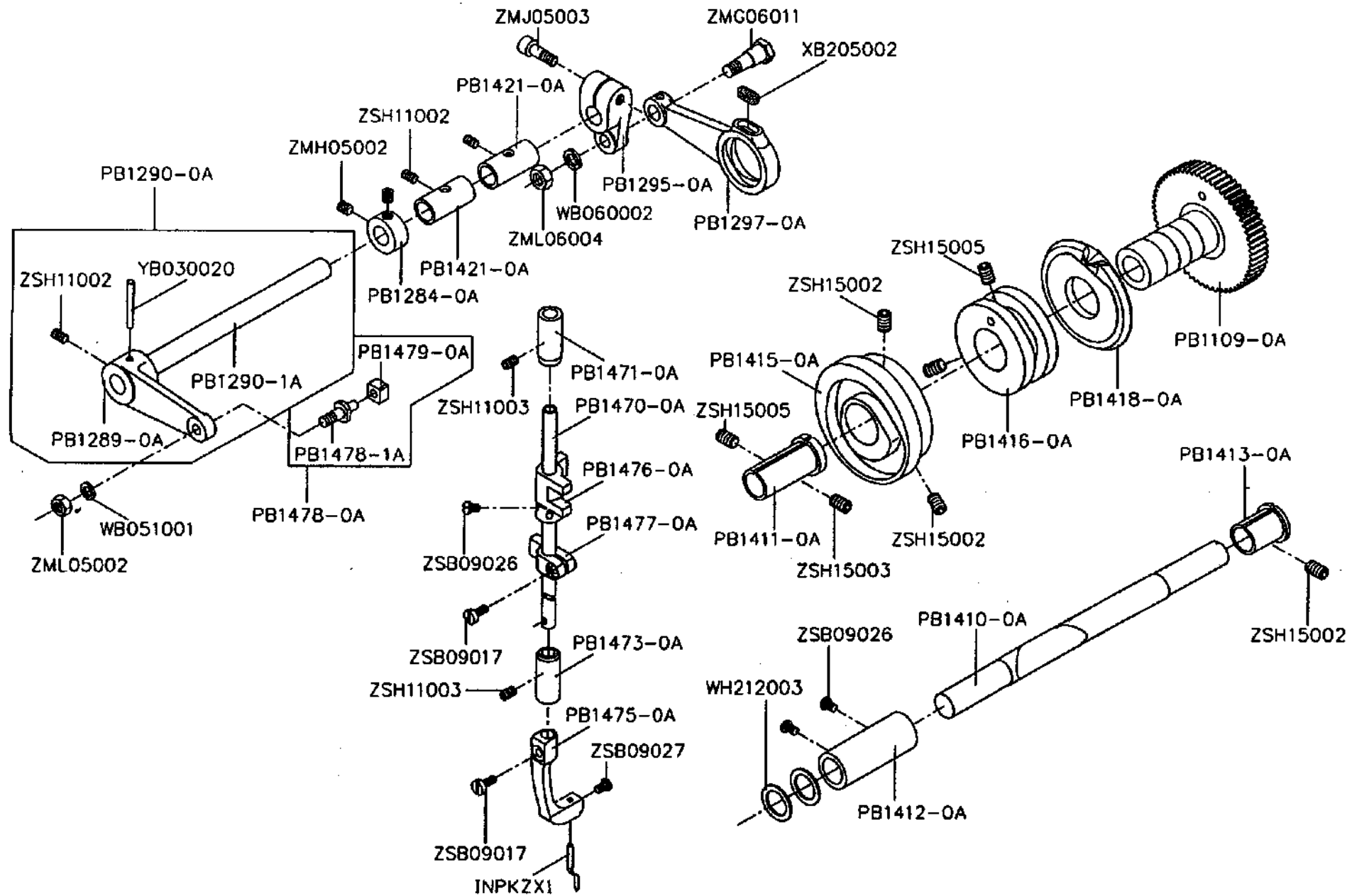
MAIN NEEDLE & CAM MECHANISM



MAIN NEEDLE & CAM MECHANISM

Part No	Name of Part	Q, TY	Remarks
INPKZX1	Main needle (auxiliary piercer) -----	1	
PB1109-0A	Feed lifting rock cam -----	1	
PB1284-0A	Collar -----	1	
PB1289-0A	Main needle activating arm -----	1	
PB1290-0A	Main needle activating arm set -----	1	
PB1290-1A	Feed rotating shaft -----	1	
PB1295-0A	Main needle vibrating crank -----	1	
PB1297-0A	Connection rod -----	1	
PB1410-0A	Cam shaft -----	1	
PB1411-0A	Bushing (left) -----	1	
PB1412-0A	Bushing (middle) -----	1	
PB1413-0A	Bushing (right) -----	1	
PB1415-0A	Feed rock cam -----	1	
PB1416-0A	Needle vibrating grooved cam -----	1	
PB1418-0A	Presser moving cam -----	1	
PB1421-0A	Bushing -----	2	
PB1470-0A	Main needle bar -----	1	
PB1471-0A	Main needle bar bushing (upper) -----	1	
PB1473-0A	Main needle bar bushing (lower) -----	1	
PB1475-0A	Main needle clamp -----	1	
PB1476-0A	Main needle bar connecting stud -----	1	
PB1477-0A	Main needle bar guide -----	1	
PB1478-0A	Square block set -----	1	
PB1478-1A	Square block shaft -----	1	
PB1479-0A	Square block -----	1	

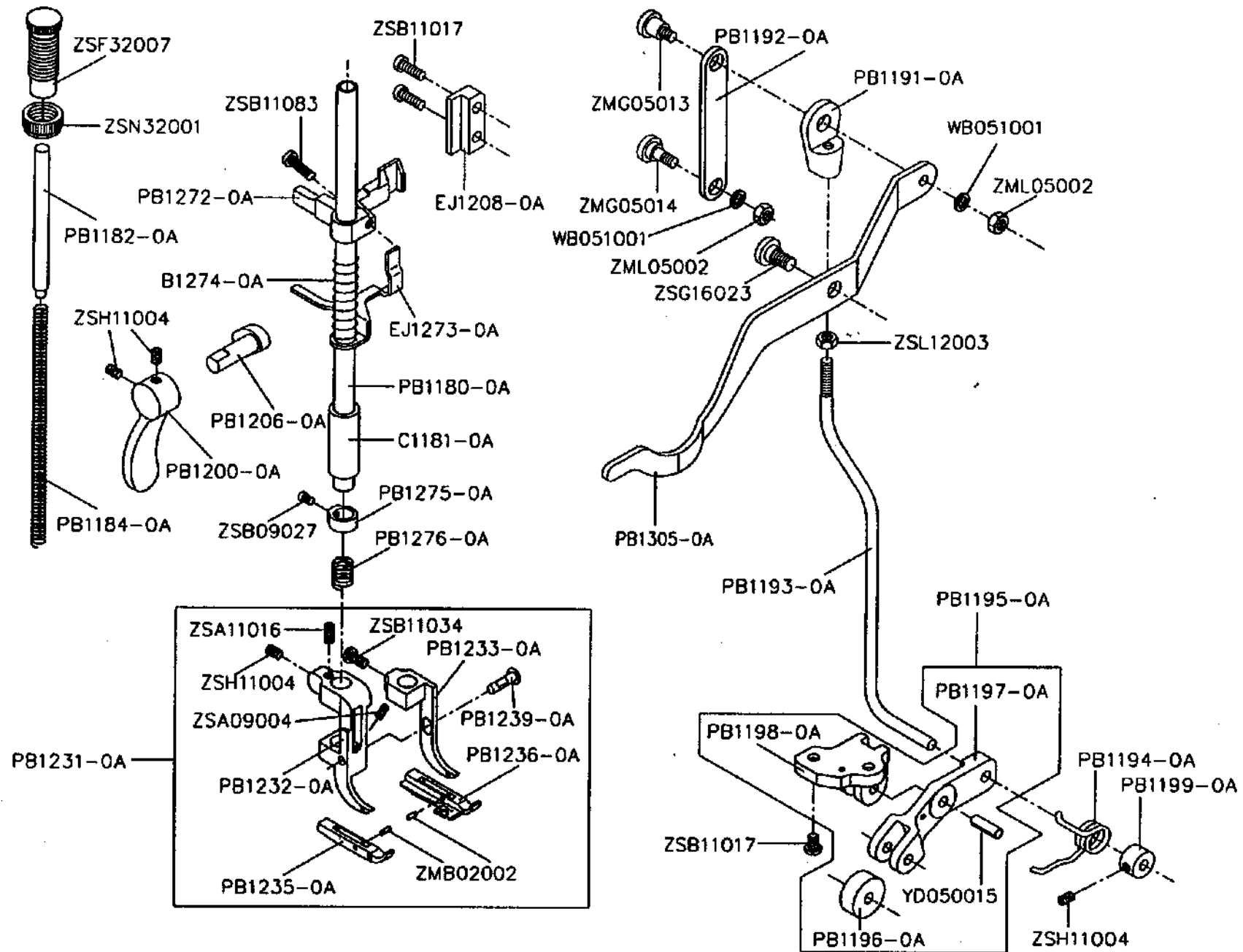
MAIN NEEDLE & CAM MECHANISM



MAIN NEEDLE & CAM MECHANISM

Part No	Name of Part	Q. TY	Remarks
WB051001	Spring washer -----	1	
WB060002	Spring washer -----	1	
WH212003	Washer -----	2	
XB205002	Oil felt -----	1	
YB030020	Taper pin -----	1	
ZMG06011	Screw (M6×1.0×6.5) -----	1	
ZMH05002	Screw (M5×0.8×6) -----	2	
ZMJ05003	Screw (M5×0.8×15) -----	1	
ZML05002	Nut (M5×0.8×4) -----	1	
ZML06004	Nut (M6×1.0×4.8) -----	1	
ZSB09017	Screw (9/64-40×8) -----	2	
ZSB09026	Screw (9/64-40×5) -----	3	
ZSB09027	Screw (9/64-40×4) -----	1	
ZSH11002	Screw (11/64-40×6) -----	3	
ZSH11003	Screw (11/64-40×8.5) -----	2	
ZSH15002	Screw (15/64-28×8) -----	3	
ZSH15003	Screw (15/64-28×5) -----	1	
ZSH15005	Screw (15/64-28×4) -----	3	

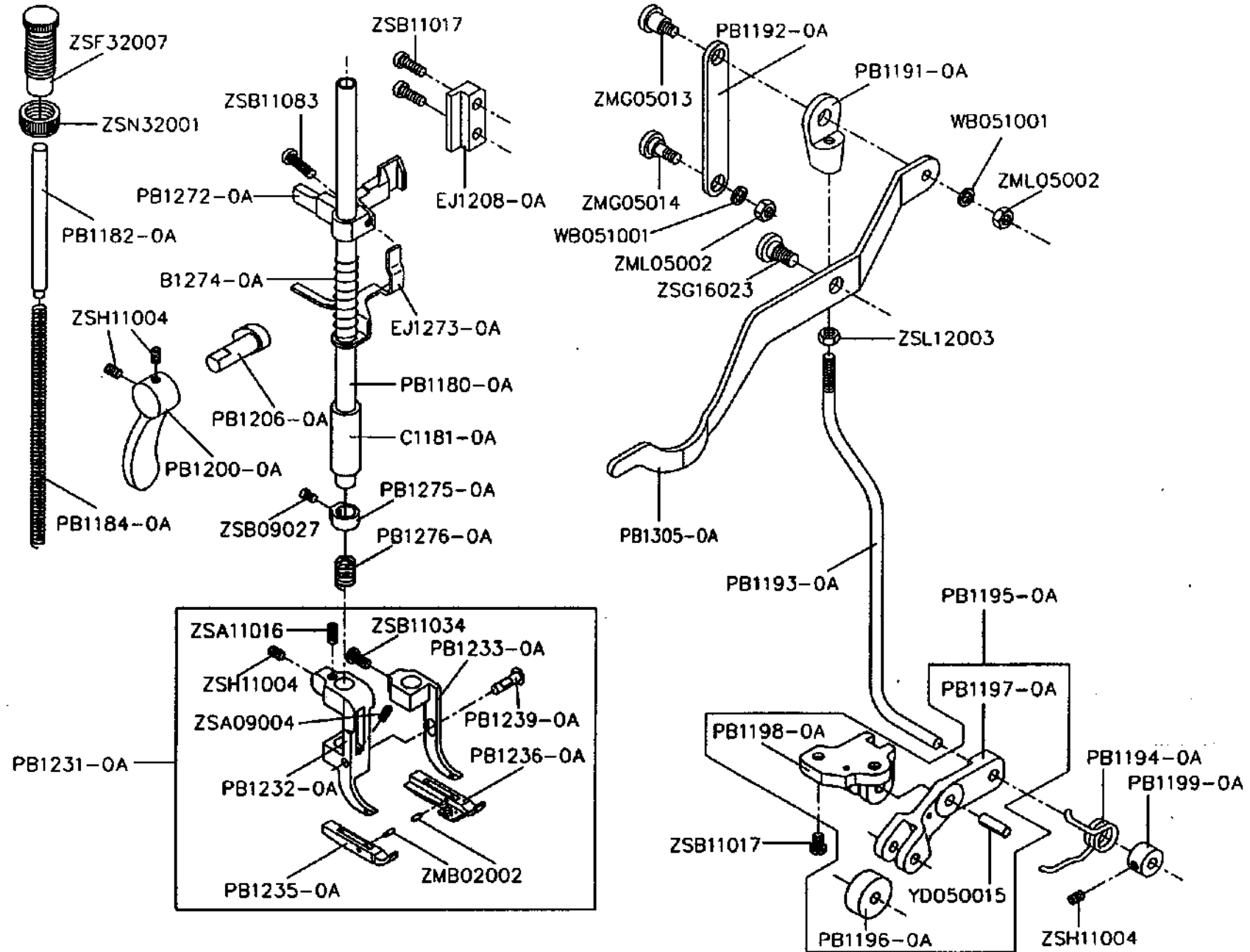
PRESSER FOOT BAT MECHANISM



PRESSER FOOT MECHANISM

Part No	Name of Part	Q. TY	Remarks
B1274-0A	Spring -----	1	
C1181-0A	Presser bar bushing -----	1	
EJ1208-0A	Position plate -----	1	
EJ1273-0A	Tension release slide -----	1	
PB1180-0A	Presser bar -----	1	
PB1182-0A	Spring guide bar complete -----	1	
PB1184-0A	Spring -----	1	
PB1191-0A	Knee lifter lever joint -----	1	
PB1192-0A	Knee lifter lever plate -----	1	
PB1193-0A	Knee lifter connecting rod -----	1	
PB1194-0A	Spring -----	1	
PB1195-0A	Knee lifter connecting rod finger -----	1	
PB1196-0A	Trundle -----	1	
PB1197-0A	Stitch tongue supporter -----	1	
PB1198-0A	Stitch tongue supporter -----	1	
PB1199-0A	Collar -----	1	
PB1200-0A	Presser bar lifter -----	1	
PB1206-0A	Presser bar lifter shaft -----	1	
PB1231-0A	Presser foot set -----	1	
PB1232-0A	Presser foot shank (left) -----	1	
PB1233-0A	Presser foot shank (right) -----	1	
PB1235-0A	Presser foot (left) -----	1	
PB1236-0A	Presser foot (right) -----	1	
PB1239-0A	Pin -----	1	
PB1272-0A	Presser bar lifter -----	1	
PB1275-0A	Presser bar bracket -----	1	
PB1276-0A	Spring -----	1	
PB1305-0A	Foot lifter lifting lever -----	1	

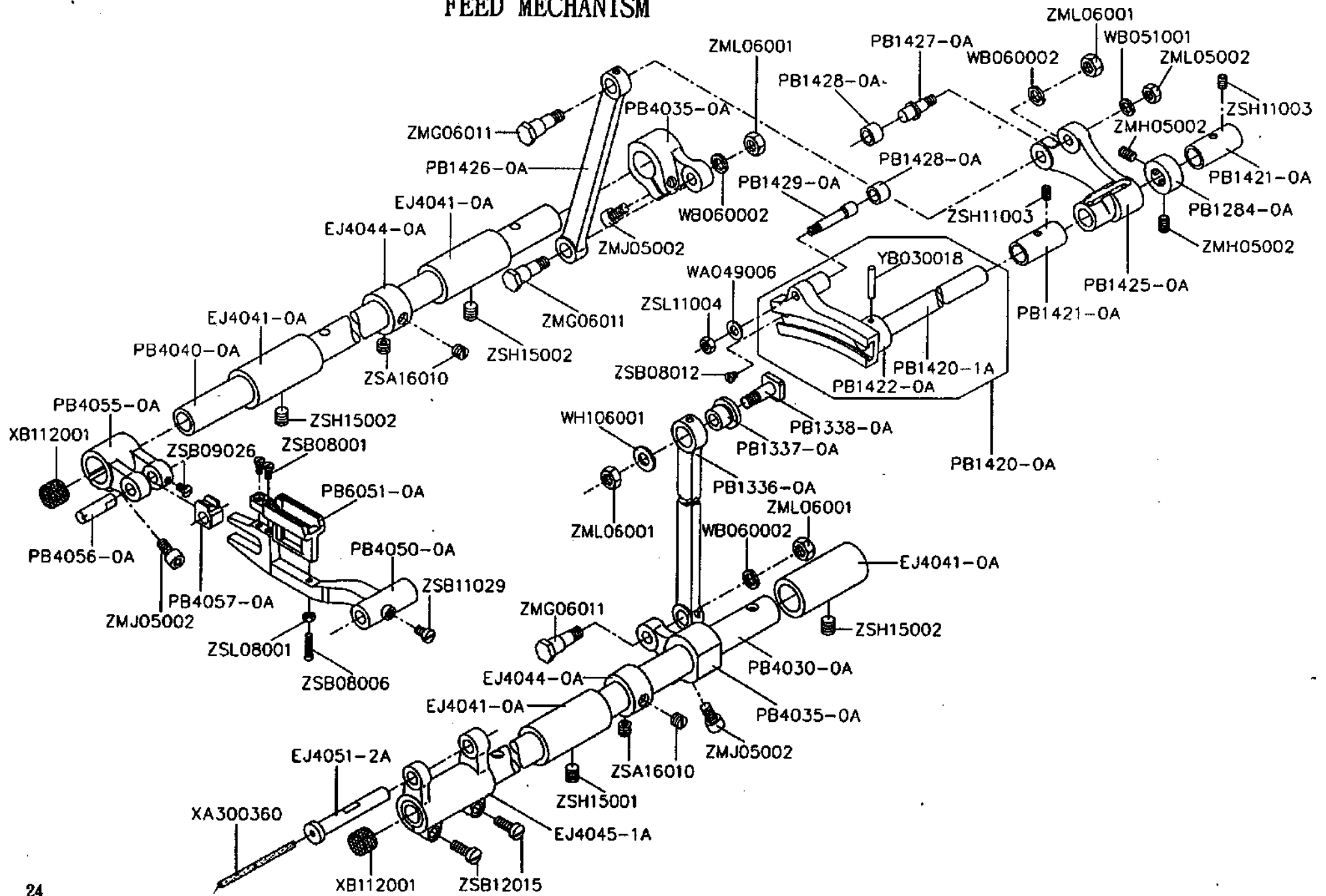
PRESSER FOOT BAT MECHANISM



PRESSER FOOT MECHANISM

Part No	Name of Part	Q. TY	Remarks
WB051001	Spring washer -----	2	
YD050015	Spring pin -----	1	
ZNB02002	Screw (M2×0.4×2) -----	2	
ZMG05013	Screw (M5×0.8×8) -----	1	
ZMG05014	Screw (M5×0.8×7) -----	1	
ZML05002	Nut (M5×0.8×4) -----	2	
ZSA09004	Screw (9/64-40×2.8) -----	1	
ZSA11016	Screw (11/64-40×10) -----	1	
ZSB09027	Screw (9/64-40×4) -----	1	
ZSB11017	Screw (11/64-40×12) -----	4	
ZSB11034	Screw (11/64-40×8) -----	1	
ZSB11083	Screw (11/64-40×18) -----	1	
ZSF32007	Screw (1/2-28×36) -----	1	
ZSG16023	Screw (1/4-24×8) -----	1	
ZSH11004	Screw (11/64-40×5) -----	4	
ZSL12003	Nut (3/16-32×3) -----	1	
ZSN32001	Nut (1/2-28×8) -----	1	

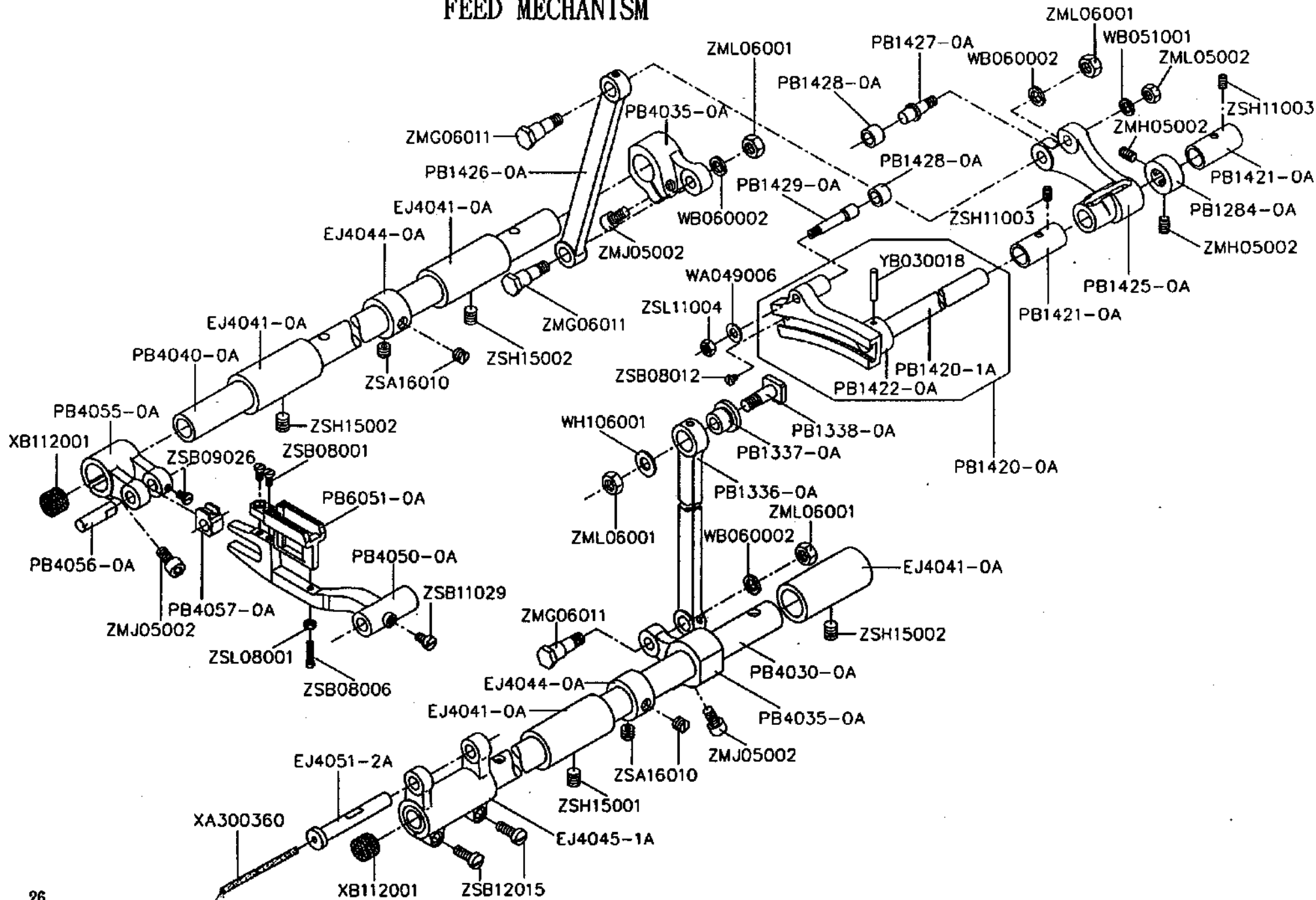
FEED MECHANISM



FEED MECHANISM

Part No	Name of Part	Q. TY	Remarks
EJ4041-0A	Feed rock shaft bushing -----	4	
EJ4044-0A	Collar -----	2	
EJ4045-1A	Feed rock shaft crank -----	1	
EJ4051-2A	Feed bar shaft -----	1	
PB1284-0A	Collar -----	1	
PB1336-0A	Feed rock crank rod -----	1	
PB1337-0A	Bushing -----	1	
PB1338-0A	Feed rock crank rod pin -----	1	
PB1420-0A	Feed rock drive grooved link set -----	1	
PB1420-1A	Feed rock shaft -----	1	
PB1421-0A	Feed rock shaft bushing -----	2	
PB1422-0A	Feed rock drive grooved -----	1	
PB1425-0A	Feed lifting rock vibrating arm -----	1	
PB1426-0A	Feed lifting rock crank rod -----	1	
PB1427-0A	Roller shaft -----	1	
PB1428-0A	Roller -----	2	
PB1429-0A	Roller shaft -----	1	
PB4030-0A	Feed rock shaft -----	1	
PB4035-0A	Crank -----	2	
PB4040-0A	Feed rock shaft -----	1	
PB4050-0A	Feed bar -----	1	
PB4055-0A	Feed lifting rock shaft crank -----	1	
PB4056-0A	Roller shaft -----	1	
PB4057-0A	Square block -----	1	
PB6051-0A	Feed cog -----	1	

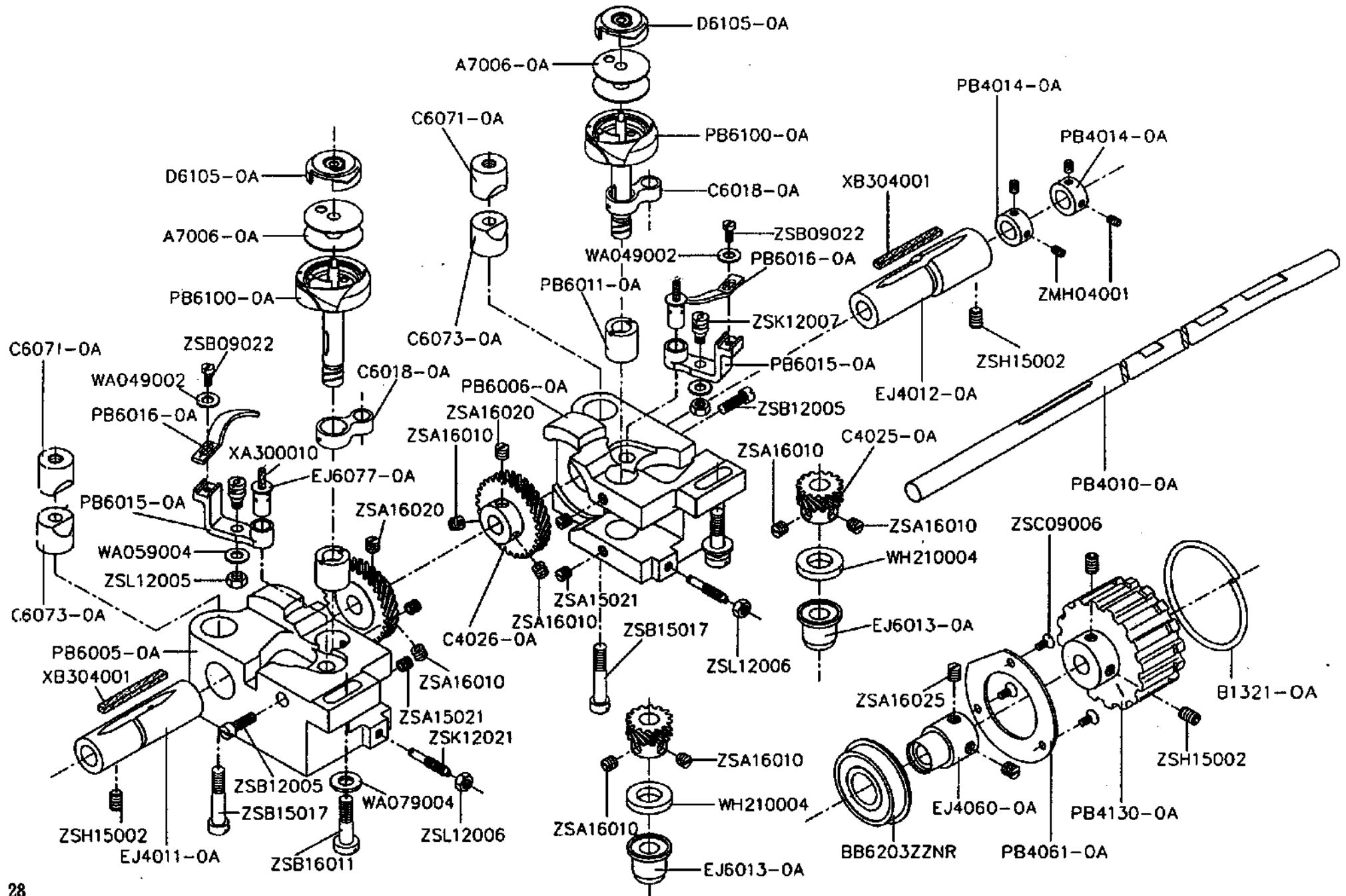
FEED MECHANISM



FEED MECHANISM

Part No	Name of Part	Q, TY	Remarks
WA049006	--- Washer ---	1	
WB051001	--- Spring washer ---	1	
WB060002	--- Spring washer ---	3	
WH106001	--- Washer ---	1	
XA300360	--- Oil wick ---	1	
XB112001	--- Oil felt ---	2	
YB030018	--- Taper pin ---	1	
ZMG06011	--- Screw (M6×1.0×6.5) ---	3	
ZMH05002	--- Screw (M5×0.8×6) ---	2	
ZMJ05002	--- Screw (M5×0.8×12) ---	3	
ZML05002	--- Nut (M5×0.8×4) ---	1	
ZML06001	--- Nut (M6×1.0×4.8) ---	4	
ZSA16010	--- Screw (1/4-40×4.5) ---	4	
ZSB08001	--- Screw (1/8-44×6) ---	2	
ZSB08006	--- Screw (1/8-44×12) ---	1	
ZSB08012	--- Screw (1/8-44×3.5) ---	1	
ZSB09026	--- Screw (9/64-40×5) ---	1	
ZSB11029	--- Screw (11/64-40×7) ---	1	
ZSB12015	--- Screw (3/16-28×12) ---	2	
ZSH11003	--- Screw (11/64-40×8.5) ---	2	
ZSH15001	--- Screw (15/64-28×6) ---	1	
ZSH15002	--- Screw (15/64-28×8) ---	3	
ZSL08001	--- Nut (1/8-44×2) ---	1	
ZSL11004	--- Nut (11/64-40×3) ---	1	

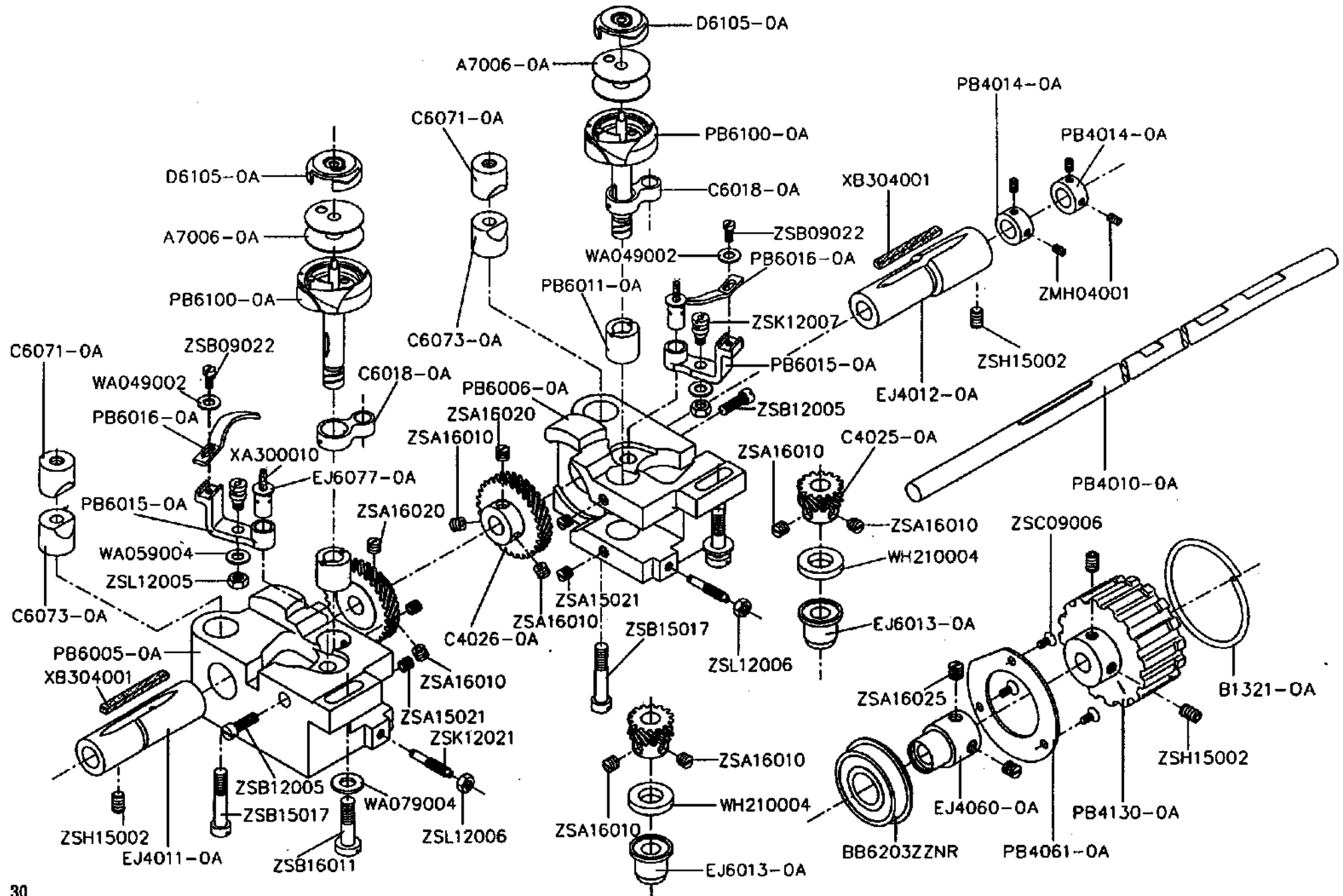
LOWER SHAFT AND ROTARY HOOK MECHANISM



LOWER SHAFT AND ROTARY HOOK MECHANISM

Part No	Name of Part	Q. TY	Remarks
A7006-0A	Bobbin -----	2	
B1321-0A	Side ring -----	1	
BB6203ZZNR	Ball bearing -----	1	
C4025-0A	Pinion -----	2	
C4026-0A	Spiral gear -----	2	
C6018-0A	Opener link -----	2	
C6071-0A	Pinch sleeve (upper) -----	2	
C6073-0A	Pinch sleeve (lower) -----	2	
D6105-0A	Bobbin case complete -----	2	
EJ4011-0A	Lower shaft bushing (left) -----	1	
EJ4012-0A	Lower shaft bushing (right) -----	1	
EJ4060-0A	Bearing holder -----	1	
EJ6013-0A	Rotary hook shaft bushing (lower) -----	2	
EJ6077-0A	Opener crank stud -----	2	
PB4010-0A	Lower shaft -----	1	
PB4014-0A	Collar -----	2	
PB4061-0A	Bearing presser -----	1	
PB4130-0A	Timing belt wheel -----	1	
PB6005-0A	Rotary hook base (left) -----	1	
PB6006-0A	Rotary hook base (right) -----	1	
PB6011-0A	Rotary hook shaft bushing (upper) -----	2	
PB6015-0A	Opener crank -----	2	
PB6016-0A	Bobbin case opener -----	2	
PB6100-0A	Rotary hook assembly -----	2	

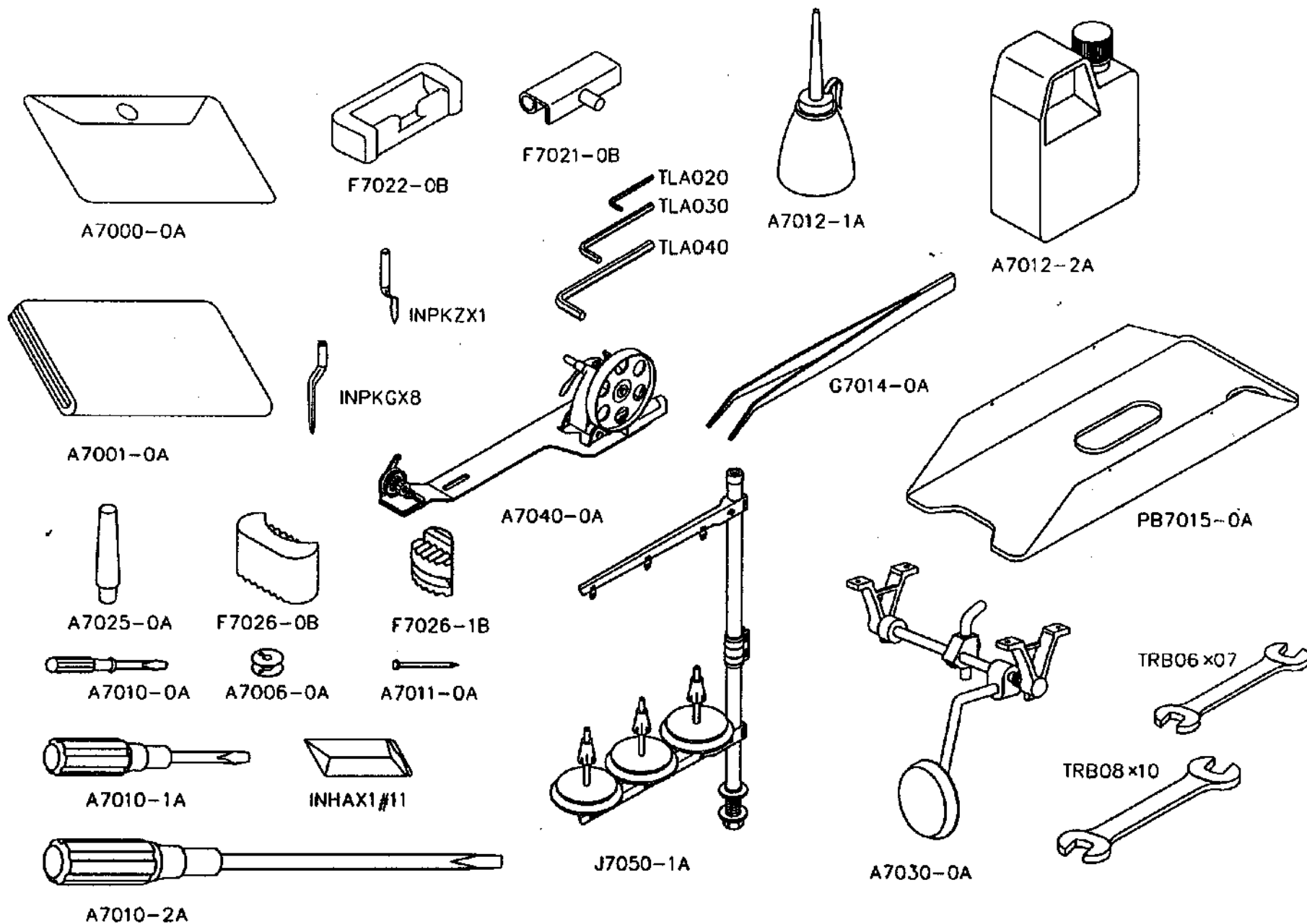
LOWER SHAFT AND ROTARY HOOK MECHANISM



LOWER SHAFT AND ROTARY HOOK MECHANISM

Part No	Name of Part	Q, TY	Remarks
WA049002	Washer -----	2	
WA059004	Washer -----	2	
WA079004	Washer -----	2	
WH210004	Washer -----	2	
XA300010	Oil wick -----	2	
XB304001	Oil felt -----	2	
ZMH04001	Screw (M4×0.7×4) -----	4	
ZSA15021	Screw (15/64-28×4.5) -----	4	
ZSA16010	Screw (1/4-40×4.5) -----	8	
ZSA16020	Screw (1/4-40×5.5) -----	2	
ZSA16025	Screw (1/4-40×6) -----	2	
ZSB09022	Screw (9/64-40×8) -----	2	
ZSB12005	Screw (3/16-28×15) -----	2	
ZSB15017	Screw (15/64-28×31.4) -----	2	
ZSB16011	Screw (1/4-24×25) -----	2	
ZSC09006	Screw (9/64-40×8) -----	3	
ZSH15002	Screw (15/64-28×8) -----	4	
ZSK12007	Screw -----	2	
ZSK12021	Screw -----	2	
ZSL12005	Nut (3/16-32×3.5) -----	2	
ZSL12006	Nut (3/16-32×3) -----	2	

ACCESSORIES



ACCESSORIES

Part No	Name of Part	Q, TY	Remarks
A7000-0A	Accessory bag -----	1	
A7001-0A	Vinyl cover -----	1	
A7006-0A	Bobbin -----	4	
A7010-0A	Screw driver (small) -----	1	
A7010-1A	Screw driver (middle) -----	1	
A7010-2A	Screw driver (large) -----	1	
A7011-0A	Nail -----	10	
A7012-1A	Oiler -----	1	
A7012-2A	Oiler -----	1	
A7025-0A	Head rest wood -----	1	
A7030-0A	Knee lifter assy. -----	1	
A7040-0A	Bobbin winder -----	1	
F7021-0B	Head hinge -----	2	
F7022-0B	Rubber hinge -----	2	
F7026-0B	Head cushion -----	2	
F7026-1B	Head cushion -----	2	
G7014-0A	Tweezers -----	1	
INHAX1#11	Needle -----	10	
INPKGX8	Guide needle (piercer) -----	1	
INPKZX1	Main needle (auxiliary piercer) -----	1	
J7050-1A	Thread stand -----	1	
PB7015-0A	Oil pan -----	1	
TLA020	Wrench 2mm -----	1	
TLA030	Wrench 3mm -----	1	
TLA040	Wrench 4mm -----	1	
TRB06×07	Spanner 6×7 -----	1	
TRB08×10	Spanner 8×10 -----	1	

NUMERICAL PARTS-LIST

PART NO	PAGE	PART NO	PAGE	PART NO	PAGE	PART NO	PAGE
A1021-1A	4	A7030-0A	32	EJ4044-0A	24	PB1074-0A	8
A1024-1A	4	A7040-0A	32	EJ4045-1A	24	PB1076-0A	8
A1026-1A	4	B1274-0A	20	EJ4051-2A	24	PB1080-0A	8
A1026-2A	4	B1321-0A	6, 28	EJ4060-0A	28	PB1081-0A	8
A1027-1A	4	BB6203ZZNR	28	EJ6013-0A	28	PB1100-0A	6
A1028-1A	4	BB6204ZZNR	6	EJ6077-0A	28	PB1108-0A	6
A1028-2A	4	C1041-0A	2	F7021-0B	32	PB1109-0A	16
A1030-0A	4	C1062-1A	8	F7022-0B	32	PB1132-0A	2
A1031-0A	4	C1082-0A	8	F7026-0B	32	PB1133-0A	2
A1032-0A	4	C1181-0A	20	F7026-1B	32	PB1180-0A	20
A1033-0A	4	C4025-0A	28	G7014-0A	32	PB1182-0A	20
A1034-0A	4	C4026-0A	28	INHAX1#11	8, 32	PB1184-0A	20
A1035-0A	4	C6018-0A	28	INPKGX8	8, 32	PB1191-0A	20
A1036-0A	4	C6071-0A	28	INPKZX1	16, 32	PB1192-0A	20
A1037-0A	4	C6073-0A	28	J7050-1A	32	PB1193-0A	20
A1038-0A	4	D6105-0A	28	PA1013-0A	8	PB1194-0A	20
A1061-0A	8	EG1105-0A	6	PA1013-4A	2	PB1195-0A	20
A1107-0A	8	EJ1051-0A	2	PA1013-5A	2	PB1196-0A	20
A7000-0A	32	EJ1101-0A	6	PB1010-0A	2	PB1197-0A	20
A7001-0A	32	EJ1103-0A	6	PB1012-0A	2	PB1198-0A	20
A7006-0A	28, 32	EJ1106-0A	6	PB1020-0A	4	PB1199-0A	20
A7010-0A	32	EJ1208-0A	20	PB1043-0A	4	PB1200-0A	20
A7010-1A	32	EJ1273-0A	20	PB1052-0A	2	PB1206-0A	20
A7010-2A	32	EJ1320-0A	6	PB1053-0A	2	PB1231-0A	20
A7011-0A	32	EJ1322-0A	6	PB1063-0A	2	PB1232-0A	20
A7012-1A	32	EJ4011-0A	28	PB1070-0A	8	PB1233-0A	20
A7012-2A	32	EJ4012-0A	28	PB1071-0A	8	PB1235-0A	20
A7025-0A	32	EJ4041-0A	24	PB1073-0A	8	PB1236-0A	20

NUMERICAL PARTS-LIST

PART NO	PAGE	PART NO	PAGE	PART NO	PAGE	PART NO	PAGE
PB1239-0A	20	PB1335-0A	12	PB1422-0A	24	PB4055-0A	24
PB1272-0A	20	PB1336-0A	24	PB1425-0A	24	PB4056-0A	24
PB1275-0A	20	PB1337-0A	24	PB1426-0A	24	PB4057-0A	24
PB1276-0A	20	PB1338-0A	24	PB1427-0A	24	PB4061-0A	28
PB1280-0A	14	PB1340-0A	12	PB1428-0A	24	PB4080-0A	2
PB1280-1A	14	PB1340-1A	12	PB1429-0A	24	PB4081-0A	2
PB1283-0A	14	PB1341-0A	12	PB1470-0A	16	PB4130-0A	28
PB1284-0A	14, 16, 24	PB1342-0A	12	PB1471-0A	16	PB6005-0A	28
PB1285-0A	14	PB1343-0A	12	PB1473-0A	16	PB6006-0A	28
PB1286-0A	14	PB1345-0A	12	PB1475-0A	16	PB6011-0A	28
PB1287-0A	14	PB1346-0A	12	PB1476-0A	16	PB6015-0A	28
PB1288-0A	14	PB1348-0A	2	PB1477-0A	16	PB6016-0A	28
PB1289-0A	14, 16	PB1351-0A	12	PB1478-0A	16	PB6050-0A	2
PB1290-0A	16	PB1352-0A	12	PB1478-1A	16	PB6051-0A	24
PB1290-1A	16	PB1353-0A	12, 14	PB1479-0A	16	PB6056-0A	2
PB1295-0A	16	PB1356-0A	12	PB1661-0A	8	PB6100-0A	28
PB1297-0A	16	PB1357-0A	12	PB1662-0A	8	PB7015-0A	32
PB1298-1A	6	PB1358-0A	12	PB1663-0A	8	RE000060	14
PB1305-0A	20	PB1410-0A	16	PB1665-0A	8	TLA020	32
PB1313-0A	14	PB1411-0A	16	PB1666-0A	8	TLA030	32
PB1314-0A	14	PB1412-0A	16	PB1671-0A	8	TLA040	32
PB1317-0A	14	PB1413-0A	16	PB1672-0A	8	TRB06×07	32
PB1317-1A	14	PB1415-0A	16	PB4010-0A	28	TRB08×10	32
PB1318-0A	14	PB1416-0A	16	PB4014-0A	28	WA030003	10
PB1319-0A	14	PB1418-0A	16	PB4030-0A	24	WA030004	10
PB1330-0A	12	PB1420-0A	24	PB4035-0A	24	WA049001	2
PB1331-0A	12	PB1420-1A	24	PB4040-0A	24	WA049002	30
PB1332-0A	12	PB1421-0A	16, 24	PB4050-0A	24	WA049003	14

NUMERICAL PARTS-LIST

PART NO	PAGE	PART NO	PAGE	PART NO	PAGE	PART NO	PAGE
WA049006	26	YD050015	22	ZSB09011	2	ZSC09011	2
WA059003	2	ZMB02002	22	ZSB09016	12, 14	ZSC09012	2
WA059004	30	ZMG05013	22	ZSB09017	18	ZSC11004	2
WA079004	30	ZMG05014	22	ZSB09020	2	ZSF09003	2
WB031001	10	ZMG06011	18, 26	ZSB09022	10, 30	ZSF32007	22
WB051001	18, 22, 26	ZMH04001	30	ZSB09026	10, 18, 26	ZSG09004	4
WB060002	18, 26	ZMH05001	14	ZSB09027	18, 22	ZSG09005	4
WH106001	26	ZMH05002	18, 26	ZSB09033	2	ZSG09022	14
WH209001	14	ZMJ05002	14, 26	ZSB11003	12	ZSG16023	22
WH210004	30	ZMJ05003	18	ZSB11012	2	ZSH11002	18
WH212003	18	ZMJ05008	2	ZSB11014	10	ZSH11003	10, 18, 26
XA300010	30	ZML05002	18, 22, 26	ZSB11017	14, 22	ZSH11004	14, 22
XA300065	10	ZML06001	26	ZSB11022	2, 4	ZSH15001	26
XA300210	12	ZML06004	18	ZSB11029	26	ZSH15002	4, 6, 12
XA300360	26	ZSA09004	22	ZSB11034	22	ZSH15002	18, 26, 30
XA500040	10	ZSA11016	22	ZSB11083	22	ZSH15003	18
XB112001	26	ZSA15021	30	ZSB12005	30	ZSH15004	10
XB118001	6	ZSA16009	6	ZSB12015	26	ZSH15005	18
XB205002	18	ZSA16010	6, 26, 30	ZSB15006	6	ZSH16001	6
XB216001	2	ZSA16020	30	ZSB15017	30	ZSK12007	30
XB304001	30	ZSA16025	30	ZSB15025	6	ZSK12021	30
Y1060-4A	8	ZSA16029	6	ZSB15041	6	ZSL08001	10, 26
YA020080	2	ZSB06003	4	ZSB16011	30	ZSL09001	4
YA020150	4	ZSB08001	26	ZSB18001	6	ZSL09002	10
YA025150	4	ZSB08006	26	ZSB18002	6	ZSL11004	26
YB020012	12	ZSB08010	10	ZSB22001	6	ZSL12003	22
YB030018	26	ZSB08012	26	ZSC06003	2	ZSL12005	30
YB030020	14, 18	ZSB08030	10	ZSC09006	30	ZSL12006	30

NUMERICAL PARTS-LIST

PART NO	PAGE	PART NO	PAGE	PART NO	PAGE	PART NO	PAGE
ZSN16002	4						
ZSN32001	22						
ZSQ09004	10						
ZSQ09005	2						