



# **STRIP CUTTER PARTS MANUAL**

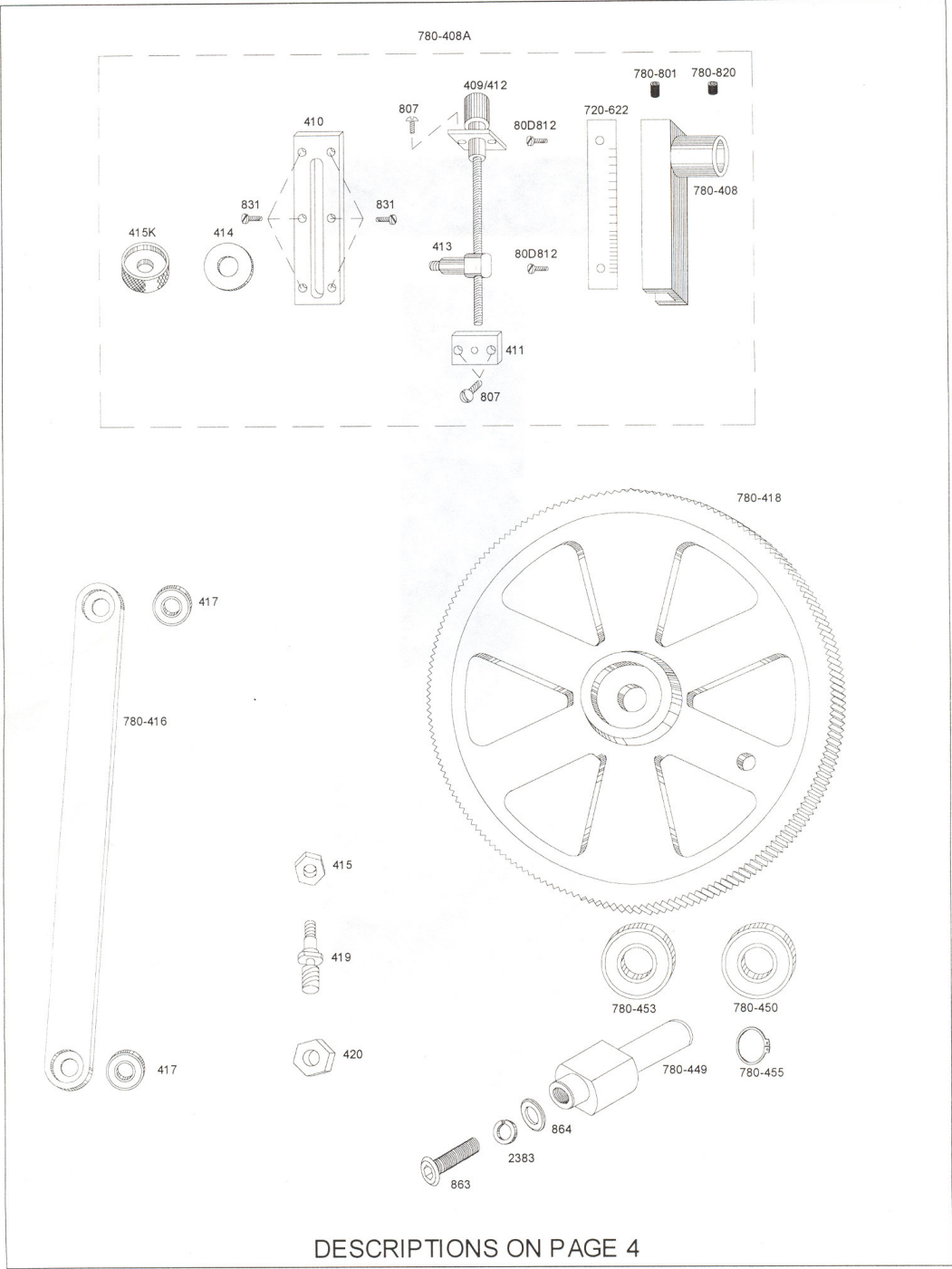
**FOR MODEL  
NC780**

**MONTROSE EQUIPMENT SALES, INC.  
202 NORTH 10TH ST.  
BROOKLYN, NEW YORK 11211-3089  
PHONE: (718) 388-7446  
FAX: (718) 218-8422**

## PARTS FOR ACE STRIP CUTTER MODEL NC780

ILLUSTRATIONS ON PAGE 1

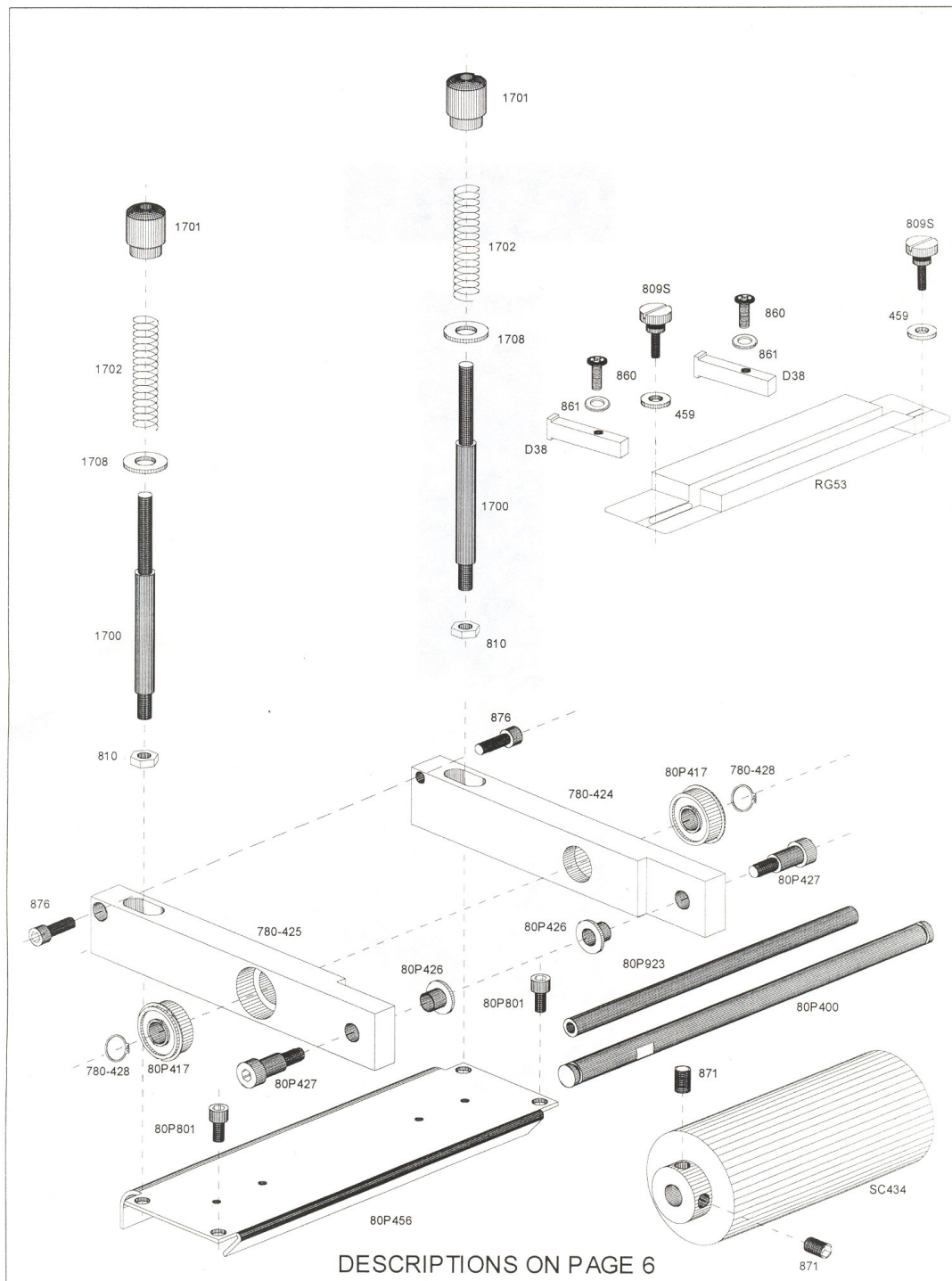
PART NUMBER	DESCRIPTION
1502	Lock washer
404K	Outside key
404KC	Inside key
422	Counter actuating spring
780-400	Motor sprocket
780-402	Chain
780-403	Crank shaft sprocket
780-404	Crank shaft
780-404M	Crank shaft bearing
780-405	Knife rod cam plate
780-406	Knife rod cam
780-421	Counter
780-423	Counter mounting bracket
780-479	Chain tensioner
780-480	Idler sprocket
780-481	Screw
780-482	Idler sprocket spacer
780-801	Set screw
780-820	Set screw
808	Screw
80D803	Set screw
860	Screw
862	Set screw
865	Nut
866	Cap screw
SC407	Knife rod



## PARTS FOR ACE STRIP CUTTER MODEL NC780

ILLUSTRATIONS ON PAGE 3

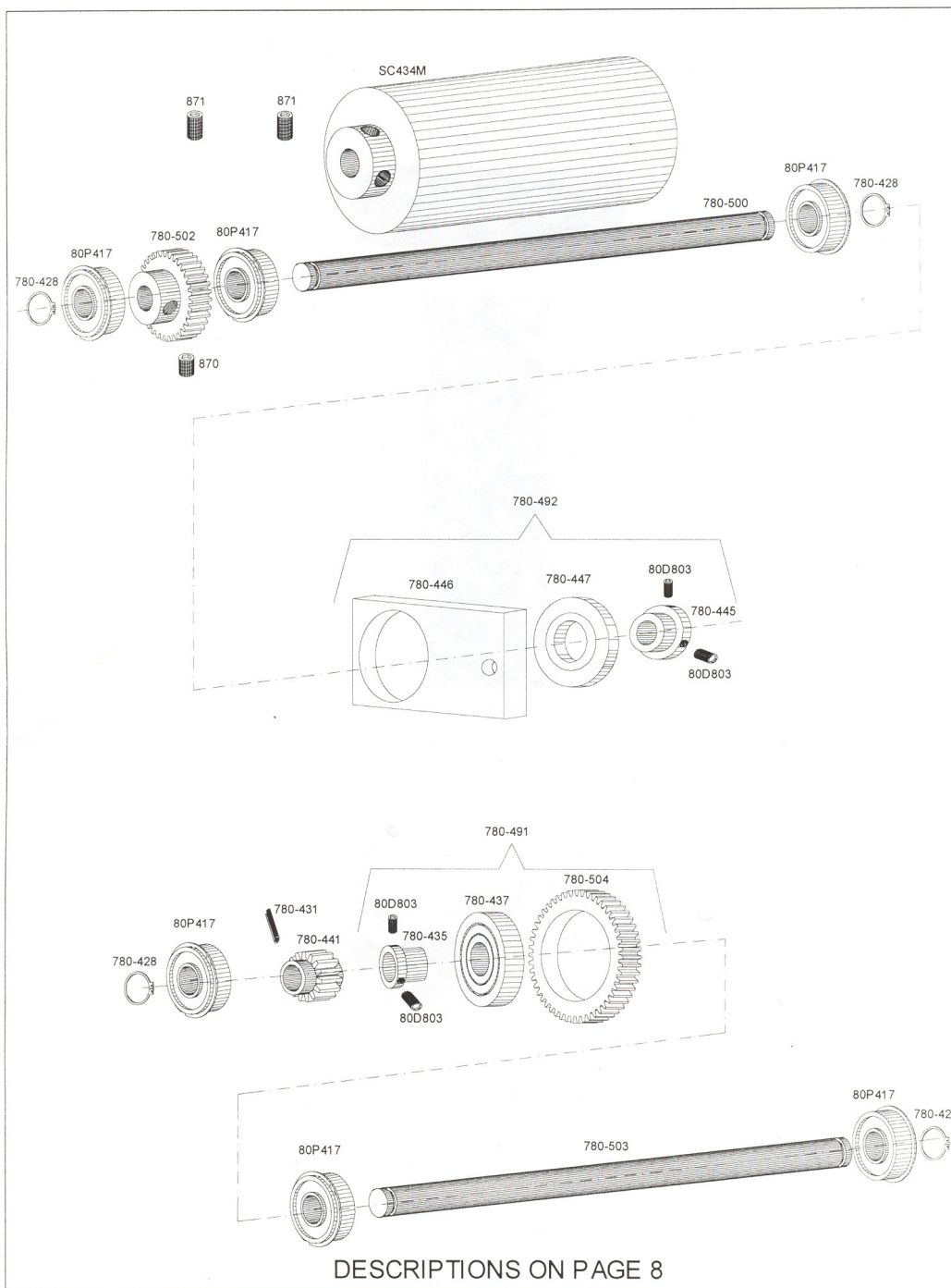
PART NUMBER	DESCRIPTION
780-820	Set screw
780-801	Set screw
409/412	Measuring screw assembly
80D812	Screw
720-622	Measuring plate, 80 inches
780-455	Retaining ring
780-453	Inside bearing for large gear
780-450	Outside bearing for large gear
780-449	Large gear axle
780-418	Large gear
780-416	Feed rod
780-408	Feed crank
780-408A	Feed crank complete, 80 inches
410	Position plate guide
411	End plate
413	Moving axle
414	Position plate
415K	Knurled knob
415	Nut
417	Bearing
419	Axel, stationary
420	Nut
807	Screw
831	Screw
863	Screw
864	Flat washer
2383	Lock washer



## PARTS FOR ACE STRIP CUTTER MODEL NC780

ILLUSTRATIONS ON PAGE 5

PART NUMBER	DESCRIPTION
1700	Column
1701	Upper roller tension nut
1702	Spring
1708	Washer
459	Washer
780-424	Arm, upper roller, left
780-425	Arm, upper roller, right
780-428	Retaining ring
809S	Thumb screw
80P400	Upper roller shaft
80P417	Bearing
80P426	Bearing
80P427	Screw
80P456	Material guide plate
80P801	Screw
80P923	Upper roller lever
810	Nut
860	Screw
861	Washer
871	Set screw
876	Screw
D38	Divider
RG53	Ribbon guide
SC434	Rubber roller



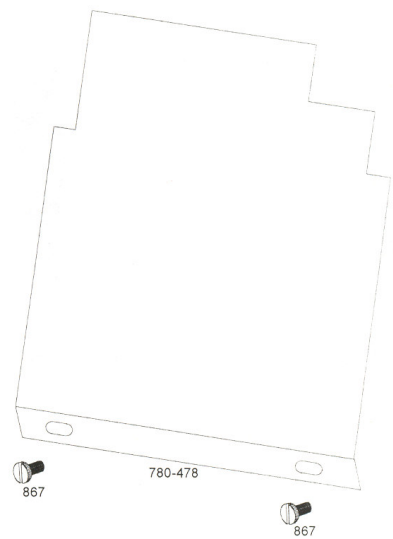
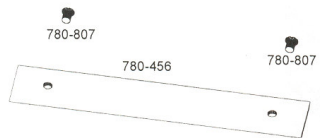
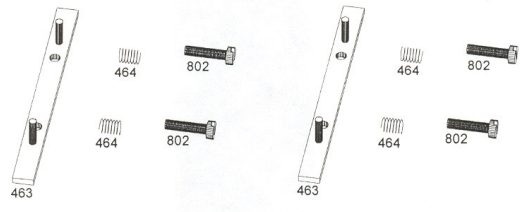
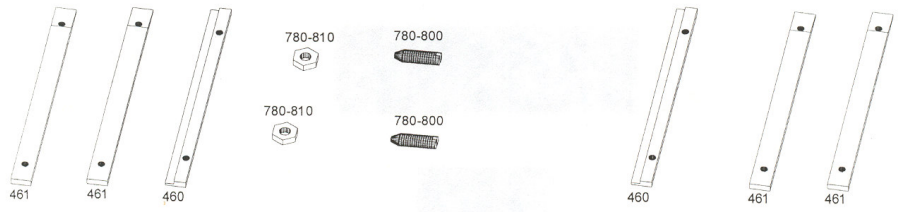


## **PARTS FOR ACE STRIP CUTTER MODEL NC780**

**ILLUSTRATIONS ON PAGE 7**

<b>PART NUMBER</b>	<b>DESCRIPTION</b>
780-428	Retaining ring
780-431	Pin
780-435	Hub
780-437	Clutch
780-441	Gear
780-445	Hub
780-446	Support plate
780-447	Clutch
780-491	Feed clutch complete
780-492	Retaining clutch complete
780-500	Lower roller shaft
780-502	Gear
780-503	Feed gear shaft
780-504	Gear
80D803	Set screw
80P417	Bearing
870	Set screw
871	Set screw
SC434M	Metal roller



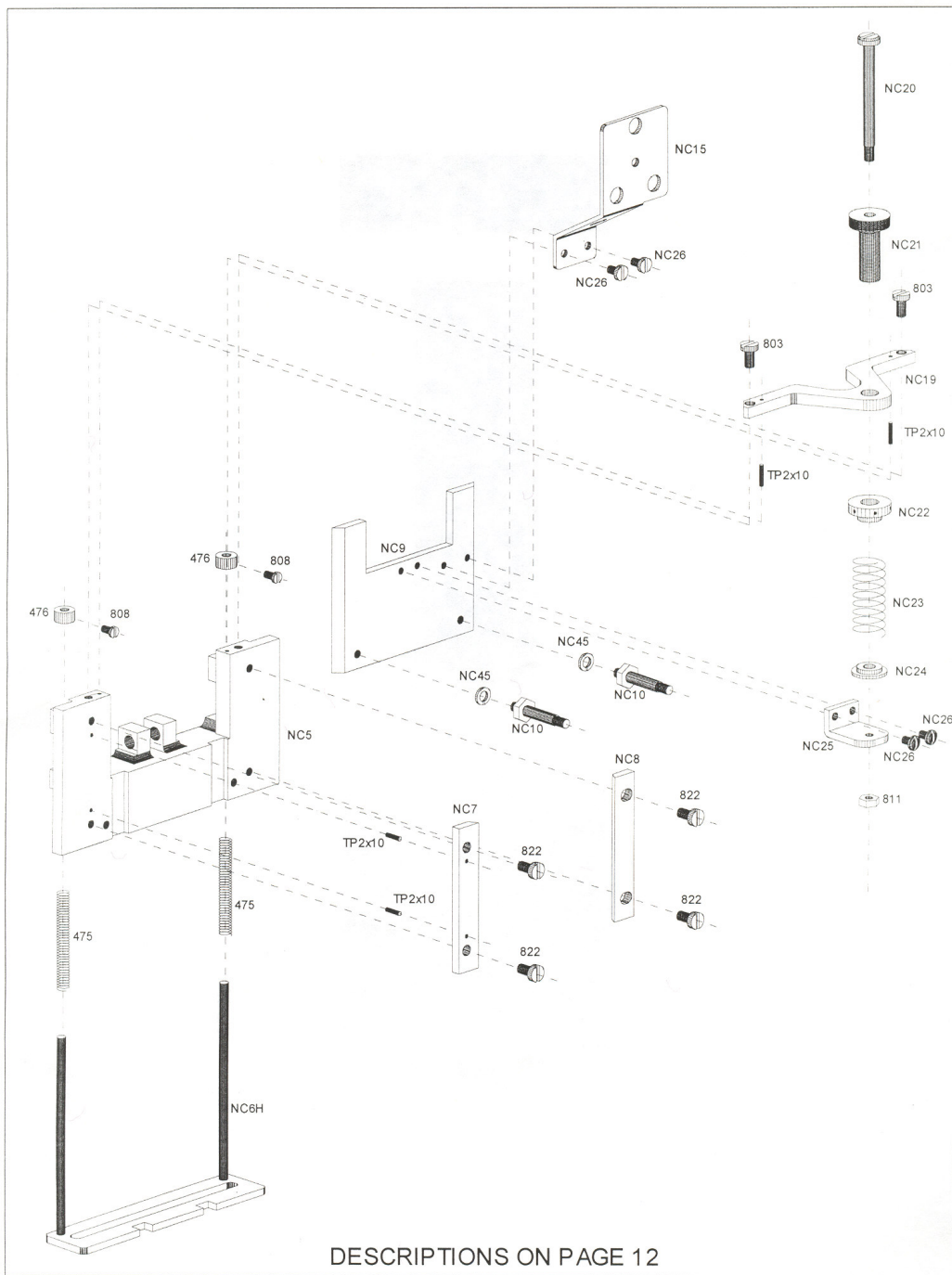


DESCRIPTIONS ON PAGE 10

## **PARTS FOR ACE STRIP CUTTER MODEL NC780**

**ILLUSTRATIONS ON PAGE 9**

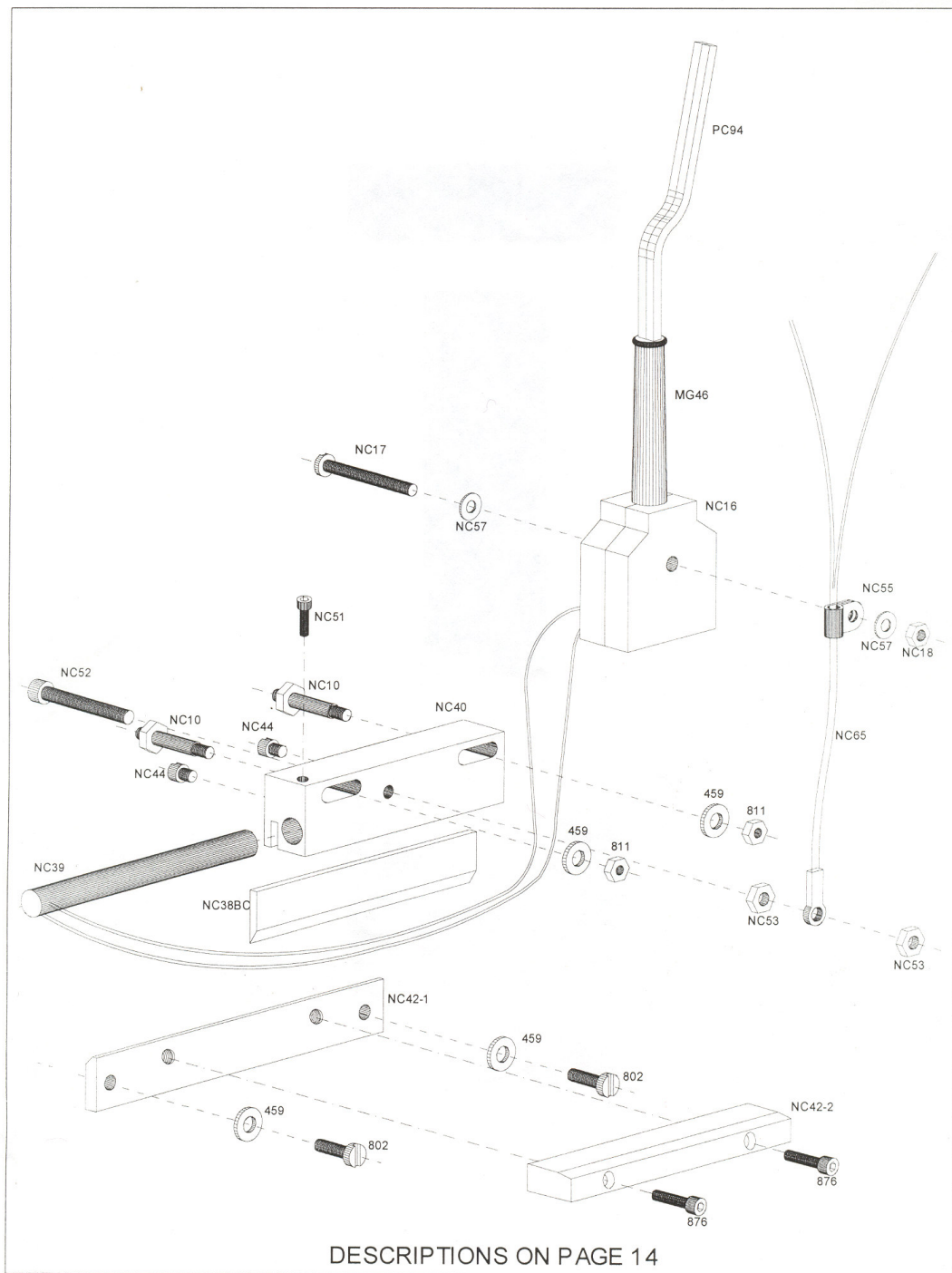
<b>PART NUMBER</b>	<b>DESCRIPTION</b>
780-810	Nut
780-807	Screw
780-800	Set screw
780-478	Chute plate
780-456	Guide plate
460	Slide plate
461	Slide plate
463	Upper knife pressure plate
464	Spring
802	Screw
867	Screw



## PARTS FOR ACE STRIP CUTTER MODEL NC780

ILLUSTRATIONS ON PAGE 11

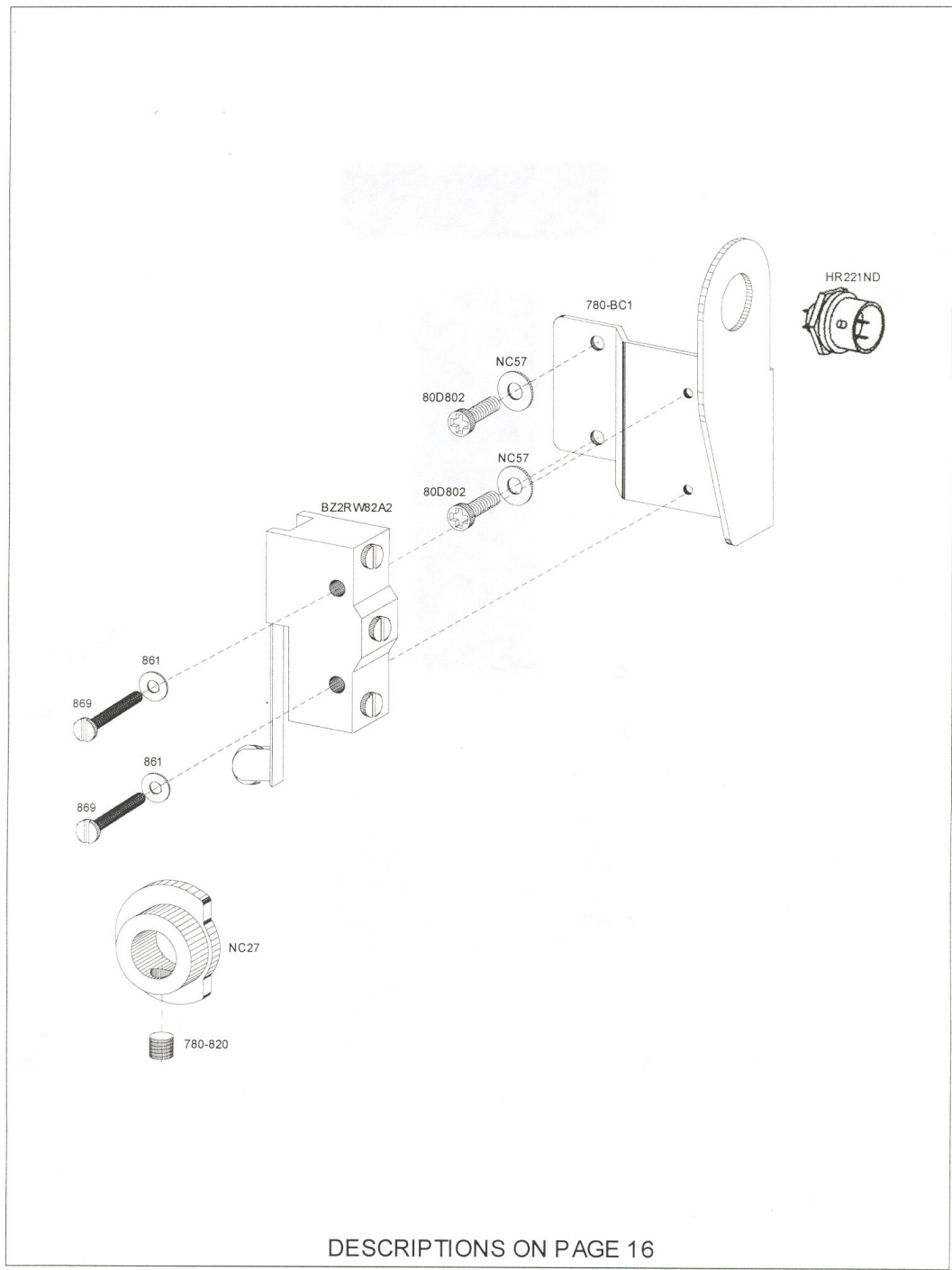
PART NUMBER	DESCRIPTION
NC10	Hot knife set screw
NC19	Upper spring support bracket
NC20	Screw
NC21	Knurled screw
NC22	Knurled nut
NC23	Spring
NC24	Spring seat
NC25	Bracket
NC26	Screw
NC45	Washer
NC5	Knife base
NC6H	Material presser
NC7	Guide
NC8	Guide
NC9	Hot knife base
TP2x10	Pin
NC15	Bracket
475	Spring
476	Collar
803	Screw
808	Screw
811	Nut
822	Screw



## PARTS FOR ACE STRIP CUTTER MODEL NC780

ILLUSTRATIONS ON PAGE 13

PART NUMBER	DESCRIPTION
459	Washer
802	Screw
811	Nut
876	Screw
MG46	Sheath
NC10	Hot knife set screw
NC16-17-18	Wire Connector Set
NC17	Screw
NC18	Nut
NC38BC	Knife, beryllium copper
NC39	Heating element
NC40	Hot knife housing
NC42-1	Cutting bar base
NC42-2	Cutting bar
NC44	Screw
NC51	Screw
NC52	Screw
NC53	Nut
NC55	Cable clamp
NC57	Washer
NC65	Thermocouple
PC94	Heater cable





## PARTS FOR ACE STRIP CUTTER MODEL NC780

ILLUSTRATIONS ON PAGE 15

PART NUMBER	DESCRIPTION
780-820	Set Screw
780-BC1	Microswitch bracket
80D802	Screw
861	Washer
869	Screw
BZ2RW82A2	Microswitch
HR221ND	2 pin receptacle
NC27	Cam
NC57	Washer